

Activity ID	Activity Name	Orig Dur	Early Start	Early Finish	Total Float	December				January				February				March				April				May		June			
						03	10	17	24	31	07	14	21	28	04	11	18	25	03	10	17	24	31	07	14	21	28	05	12	19	26
YL Effluent Polishing Plant - Main Works Stage 1 - Detailed Works Programme DPv33_240117r1																															
Contract Data Part 1																															
Access Dates																															
ADWA2	Work Area WA2 (sd) (new site possession) validity for 12 months and subject to renewal	757	05-Mar-21 A	22-Feb-25*	0																										
ADP3	Portion 3 (sd+1218d)	0	11-Mar-24*		0																										
Contract Key Dates																															
CKD10	KD10 - Completion of Civil & Structural works of roof floor of sludge thickening bldg (RevKD10=6Feb24)	0		22-Feb-24*	0																										
Environmental Constraints																															
NMM-2165	PS 1.105A Noise Mitigation Measures 2023-2024	152	01-Nov-23 A	31-Mar-24	0																										
EBS-2175	Egrets Breeding Season 2024	184	01-Mar-24*	31-Aug-24	0																										
Planned Completion																															
Compensation Events																															
CE321	Implementation of Compensation Event (CE) No.321 - Amber Rainstorm Warning and Inclement Weather in July 2023	0		28-Dec-23 A																											
Preliminary and Preparation Works																															
Subletting																															
SUB-270	Subletting for ELS works for IW, PST, SDB, STB, SD, MBB, TTB, underpass and open cut for admin. bldg	312	12-Oct-21 A	30-Jan-24	-228																										
SUB-380	Subletting for Sheet piling works for remaining areas	333	12-Oct-21 A	12-Mar-24	152																										
SUB-280	Subletting for RC works for IW, PST, SDB, STB, SD, Biogas holder, underpass and admin. bldg	256	29-Nov-21 A	12-Feb-24	-259																										
SUB-350	Subletting for Waterproofing membrane and protection board	300	29-Nov-21 A	04-Feb-24	-91																										
SUB-360	Subletting for Rebar fixing	86	29-Nov-21 A	01-Mar-24	-259																										
SUB-310	Subletting for Utilities Corridor ELS	60	08-Aug-22 A	09-Feb-24	-98																										
SUB-290	Subletting for ABWF works for IW, PST, SDB, STB, MBR, TTB and admin. bldg	60	01-Aug-23 A	29-Feb-24	-208																										
SUB-300	Subletting for RC works for MBR and TTB	60	07-Mar-24	05-May-24	-110																										
SUB-340	Subletting for Drainage, Sewage & waterworks	90	07-Mar-24	04-Jun-24	-110																										
Design Submission																															
Temporary Works Design																															
Mainstream Bio-Reactor System																															
TWD-250	ELS - Obtain Approval	7	23-Aug-23 A	27-Jan-24	96																										
Sludge Thickening Building																															
One-stage design																															
TWD-210	ELS - Obtain Approval	7	10-Dec-22 A	26-Jan-24	-51																										
Sludge Digester 1-3 & Utilities Corridor																															
TWD-370	ELS - Obtain Approval	7	21-Dec-22 A	29-Jan-24	-180																										
Sludge Dewatering and Underpass																															
TWD-260	ELS - Prepare & Submission for PMs review	45	30-Jan-24	14-Mar-24	94																										
TWD-270	ELS - Review by PMs & ICE review (28 d + 7d)	35	15-Mar-24	18-Apr-24	94																										
Modification of Existing Inspection Chamber & Inlet Effluent Pipes from NSWSPS																															
TWD-700	ELS - Prepare & Submission for PMs review	45	26-Oct-22 A	07-Jan-24	-187																										
TWD-710	ELS - Review by PMs & ICE review (28 d + 7d)	35	08-Jan-24	11-Feb-24	-187																										
TWD-720	ELS - Resubmission for PMs & ICE review (7d prep & resub. + 7d ICE)	14	12-Feb-24	25-Feb-24	-187																										
TWD-730	ELS - Obtain Approval	7	26-Feb-24	03-Mar-24	-187																										
Temporary pipework between PST Stage 1 and A-Tank Inlet [Temporary pumping system]																															
TWD-750	Hydraulic design - Prep(45d), Sub.&Review(30d), Comment&Resub (14d) & Approval (7d)	96	14-Sep-23 A	14-Jan-24	-144																										
Temporary pumping and pipeworks between existing Detritor and PST Stage 1 [Temp. pumping system]																															
TWD-780	Hydraulic design - Prep(45d), Sub.&Review(21d), Comment&Resub (14d) & Approval (7d)	96	01-Aug-23 A	14-Jan-24	-189																										
Temporary Working Platform at ELS																															
Temporary Working Platform at AGS ELS																															
TWD-920	Temp. Working Platform - AGS ELS - Obtain Approval	7	08-Dec-23 A	07-Jan-24	-224																										
Temporary Working Platform at TTS ELS																															
TWD-960	Temp. Working Platform - TTS ELS - Obtain Approval	7	12-Dec-23 A	07-Jan-24	-217																										
Temporary diversion scheme for Early commissioning of SD, BH1, H2S and STB																															
TWD-970	Temp. pipe. for BH1 Early Comm.-Prep(90d), Sub.&Review(30d), Comment&Resub(14d) & Approval(7d)	141	30-Jun-23 A	05-Mar-24	-74																										
TWD-1010	Temp. pipe. for SD1-2 Early Comm.-Prep(90d), Sub.&Review(30d), Comment&Resub(14d) & Approval(7d)	141	01-Jan-24	20-May-24	-60																										
Contractor's Permanent Works Design (include ATAL)																															
AIP																															
Package 3A - Plant Service Water																															
AP-520	E&MAP Report for Plant Service Water - Resubmission for further review	45	20-Dec-21 A	30-Jan-24	-10																										
AP-530	E&MAP Report for Plant Service Water - Obtain Approval	7	31-Jan-24	06-Feb-24	-10																										
Package 23A - Security, Public Address and Communication System																															
AP-970	SPC - Resubmission for further review	45	12-Oct-23 A	07-Feb-24	-102																										
AP-980	SPC - Obtain Approval	13	08-Feb-24	20-Feb-24	-102																										
DDA																															
Package 2 - Tertiary Treatment System																															
DDA-170	Civil Req. for TTS (Foundation design) - Prepare(27d), Sub. & Review(45d), Comment & Resub.(14d), GEO(28d) & Appr	121	13-Jun-21 A	23-Jan-24	-111																										
DDA-150	Foundation for TTS - Prepare (90d), Sub. & Review(45d), Comment & Resub.(14d) & Approval (7d), GEO (28d)	213	08-Oct-21 A	17-Feb-24	-133																										
DDA-180	Civil Req. for TTS (Superstruct design) - Prepare (147d), Sub. & Review(45d), Comment & Resub.(14d) & Approval (7d)	213	11-Oct-21 A	23-Jan-24	38																										
DDA-200	Mechanical for TTS - Prepare (60d), Sub. & Review(45d), Comment & Resub.(14d) & Approval (7d)	213	31-Dec-21 A	24-Jan-24	152																										
DDA-210	Electrical & Control for TTS - Prepare (60d), Sub. & Review(45d), Comment & Resub.(14d) & Approval (7d)	213	31-Dec-21 A	24-Jan-24	152																										
DDA-140	Architectural for TTS - Prepare (60d), Sub. & Review(45d), Comment & Resub.(14d) & Approval (7d)	126	17-Nov-22 A	24-Apr-24	-44																										
DDA-160	Civil & Structural for TTS - Prepare (120d), Sub. & Review(45d), Comment & Resub.(14d) & Approval (7d)	177	17-Nov-22 A	23-Apr-24	-202																										
DDA-220	Building Services (BS) for TTS - Prepare (60d), Sub. & Review(45d), Comment & Resub.(14d) & Approval (7d)	199	30-Oct-23 A	25-May-24	30																										
Package 3 - Mainstream Bio-Reactor System																															
DDA-260	Civil Req. for MBS-AGS (Foundation design) - Prepare (60d), Sub. & Review(45d), Comment & Resub.(14d) & Approval (7d)	126	09-Jun-21 A	23-Jan-24	-41																										
DDA-280	P&ID for MBS (60d), Sub. & Review(45d), Comment & Resub.(14d) & Approval (7d)	126	08-Oct-21 A	11-Feb-24	187																										
DDA-290	Mechanical for MBS - Prepare (60d), Sub. & Review(45d), Comment & Resub.(14d) & Approval (7d)	126	08-Oct-21 A	17-Feb-24	187																										
DDA-300	Electrical & Control for MBS - Prepare (60d), Sub. & Review(45d), Comment & Resub.(14d) & Approval (7d)	405	08-Oct-21 A	11-Feb-24	193																										
DDA-270	Civil Req. for MBS-AGS (Superstruct design) - Prepare (60d), Sub. & Review(45d), Comment & Resub.(14d) & Approval (7d)	126	01-Mar-22 A	23-Jan-24	-41																										
DDA-240	Foundation for MBS - Prepare (97d), Sub. & Review(45d), Comment & Resub.(14d), GEO (28d) & Approval (7d)	230	18-Mar-22 A	09-Apr-24	-110																										
DDA-250	Civil & Structural for MBS - Prepare (60d), Sub. & Review(45d), Comment & Resub.(14d) & Approval (7d)	170	20-Jan-23 A	28-Apr-24	-41																										
DDA-1530	VACAB for AGS&TTS - Prepare (30d), Sub. & Review(30d)	204	16-Jun-23 A	22-Apr-24	93																										
DDA-310	Building Services (BS) for MBS - Prepare (60d), Sub. & Review(45d), Comment & Resub.(14d) & Approval (7d)	142	01-Jan-24	21-May-24	93																										
Package 5A - Master Water Meter Room																															
DDA-390	P&ID for MVMC - MBS (60d), Sub. & Review(45d), Comment & Resub.(14d) & Approval (7d)	64	26-Jun-23 A	06-Jul-24	72																										
DDA-400	Mechanical for MVMC - Prepare (60d), Sub. & Review(45d), Comment & Resub.(14d) & Approval (7d)	220	30-Oct-23 A	06-Jul-24	847																										
DDA-410	Electrical & Control for MVMC - Prepare (60d), Sub. & Review(45d), Comment & Resub.(14d) & Approval (7d)	220	30-Oct-23 A	06-Jul-24	847																										
Package 5B - Plant Service Water (PSW)																															
DDA-1050	Civil Requirement Drawings - Prep(60d), Sub. & Review(45d), Comment & Resub.(14d) & Approval (7d)	126	12-Jun-21 A	17-Mar-24	11																										
DDA-1040	Piping & Instrumentation Diagram (P&ID) - Prep(30d), Sub. & Review(28d), Comment & Resub.(14d) & Approval (7d)	220	26-Jun-23 A	06-Jul-24	-13																										
DDA-1060	Electrical & Control for PSW - Prep(60d), Sub. & Review(45d), Comment & Resub.(14d) & Approval (7d)	188	01-Jan-24	06-Jul-24	-13																										
DDA-1070	Mechanical for PSW - Prep(60d), Sub. & Review(45d), Comment & Resub.(14d) & Approval (7d)	188	01-Jan-24	06-Jul-24	-13																										
Package 6 - Sludge Thickening Chemical and Dosing System																															



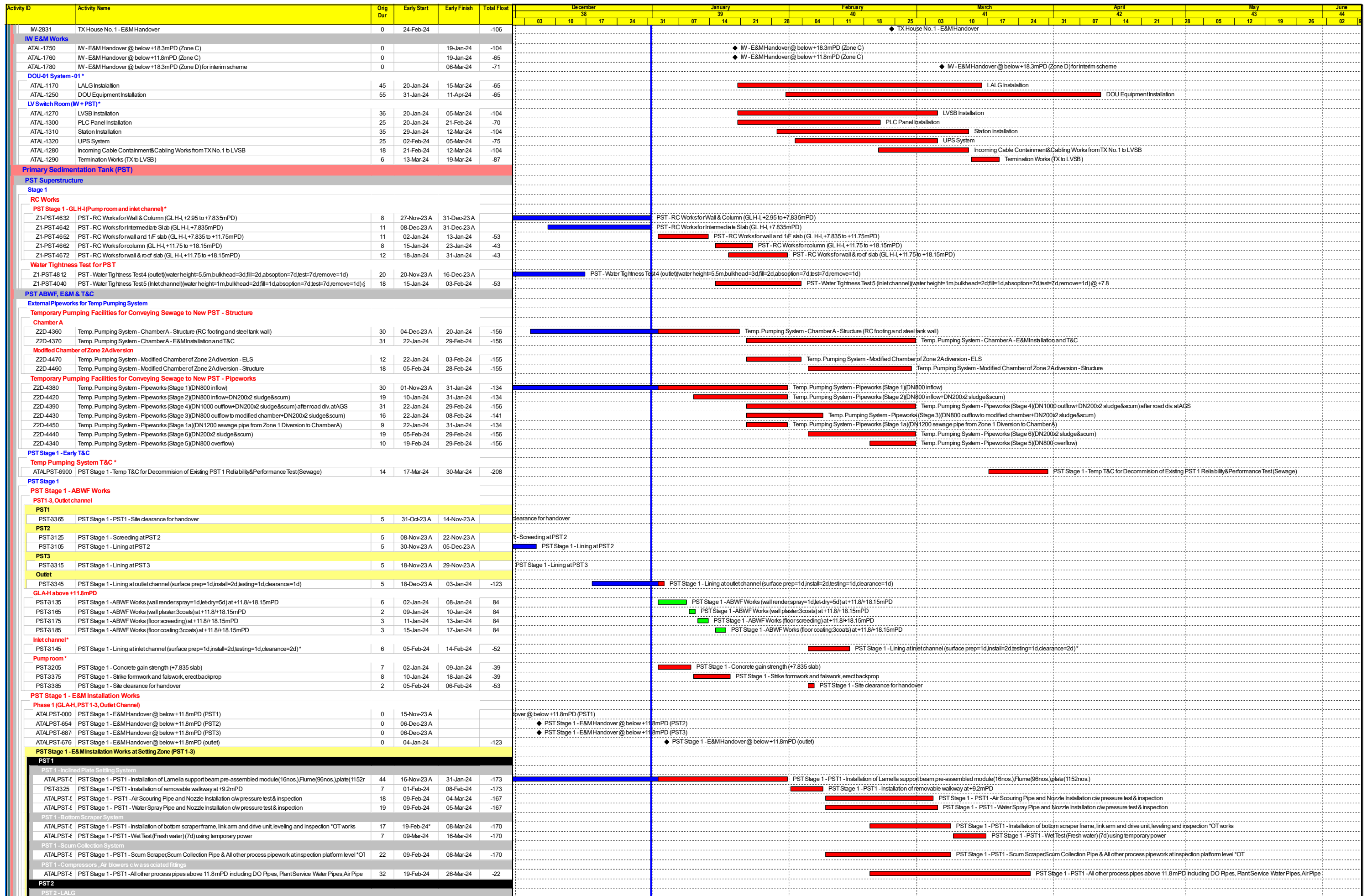
- Remaining Level of Eff.
- Actual Work
- Remaining Work
- Critical Remaining Work
- ◆ Milestone

Contract DC/2019/10 - YLEPP - Main Works for Stage 1

Monthly Progress Report No. 38- 3MRP (Dec 23)

Project ID : DWPr33_230117r1
 Layout : DC201910 MPR38-3MRP
 Page 1 of 9

Monthly Progress Report - 3MRP			
Date	Revision	Checked	Approved
31-Dec-23	Rev. 0		



- Remaining Level of Effort
- Actual Work
- Remaining Work
- Critical Remaining Work
- ◆ Milestone

Contract DC/2019/10 - YLEPP - Main Works for Stage 1

Monthly Progress Report No. 38- 3MRP (Dec 23)

Project ID : DWPr33_2301171
 Layout : DC201910 MPR38-3MRP
 Page 5 of 9

Monthly Progress Report - 3MRP			
Date	Revision	Checked	Approved
31-Dec-23	Rev. 0		

Activity ID	Activity Name	Orig Dur	Early Start	Early Finish	Total Float	December				January				February				March				April				May				June			
						03	10	17	24	31	07	14	21	28	04	11	18	25	03	10	17	24	31	07	14	21	28	05	12	19	26	02	09
ATALPST-4	PST Stage 1 - LALG-PST2	23	27-Nov-23 A	05-Jan-24	-58	PST Stage 1 - LALG-PST2																											
ATALPST-4	PST Stage 1 - PST2 - Installation of Lamella support beam pre-assembled module (16nos.) Flume (96nos.) plate (1152r)	45	06-Jan-24	01-Mar-24	-55	PST Stage 1 - PST2 - Installation of Lamella support beam pre-assembled module (16nos.) Flume (96nos.) plate (1152nos)																											
PST3355	PST Stage 1 - PST2 - Installation of removable walkway at +9.2mPD	7	02-Mar-24	09-Mar-24	-55	PST Stage 1 - PST2 - Installation of removable walkway at +9.2mPD																											
ATALPST-4	PST Stage 1 - PST2 - Air Scouring Pipe and Nozzle Installation c/w pressure test & inspection	18	11-Mar-24	03-Apr-24	-26	PST Stage 1 - PST2 - Air Scouring Pipe and Nozzle Installation c/w pressure test & inspection																											
ATALPST-4	PST Stage 1 - PST2 - Water Spray Pipe and Nozzle Installation c/w pressure test & inspection	18	11-Mar-24	03-Apr-24	-26	PST Stage 1 - PST2 - Water Spray Pipe and Nozzle Installation c/w pressure test & inspection																											
ATALPST-4	PST Stage 1 - PST2 - Installation of bottom scraper frame, link arm and drive unit, leveling and inspection	45	11-Mar-24	07-May-24	-53	PST Stage 1 - PST2 - Installation of bottom scraper frame, link arm and drive unit, leveling and inspection																											
ATALPST-4	PST Stage 1 - PST2 - Scum Scraper/Scum Collection Pipe & All other process pipework at inspection platform level	26	11-Mar-24	13-Apr-24	-34	PST Stage 1 - PST2 - Scum Scraper/Scum Collection Pipe & All other process pipework at inspection platform level																											
ATALPST-4	PST Stage 1 - PST2 - All other process pipes above 11.8mPD including DO Pipes, Plant Service Water Pipes, Air Pipe	26	02-Mar-24	05-Apr-24	-27	PST Stage 1 - PST2 - All other process pipes above 11.8mPD including DO Pipes, Plant Service Water Pipes, Air Pipe																											
ATALPST-4	PST Stage 1 - LALG-PST3	23	16-Nov-23 A	18-Dec-23 A		PST Stage 1 - LALG-PST3																											
ATALPST-4	PST Stage 1 - PST3 - Installation of Lamella support beam pre-assembled module (16nos.) Flume (96nos.) plate (1152r)	45	19-Dec-23 A	31-Jan-24	-39	PST Stage 1 - PST3 - Installation of Lamella support beam pre-assembled module (16nos.) Flume (96nos.) plate (1152nos)																											
PST3335	PST Stage 1 - PST3 - Installation of removable walkway at +9.2mPD	7	01-Feb-24	08-Feb-24	-39	PST Stage 1 - PST3 - Installation of removable walkway at +9.2mPD																											
ATALPST-4	PST Stage 1 - PST3 - Air Scouring Pipe and Nozzle Installation c/w pressure test & inspection	15	09-Feb-24	29-Feb-24	-8	PST Stage 1 - PST3 - Air Scouring Pipe and Nozzle Installation c/w pressure test & inspection																											
ATALPST-4	PST Stage 1 - PST3 - Water Spray Pipe and Nozzle Installation c/w pressure test & inspection	15	09-Feb-24	29-Feb-24	-8	PST Stage 1 - PST3 - Water Spray Pipe and Nozzle Installation c/w pressure test & inspection																											
ATALPST-4	PST Stage 1 - PST3 - Installation of bottom scraper frame, link arm and drive unit, leveling and inspection	45	09-Feb-24	09-Apr-24	-38	PST Stage 1 - PST3 - Installation of bottom scraper frame, link arm and drive unit, leveling and inspection																											
ATALPST-4	PST Stage 1 - PST3 - Scum Scraper/Scum Collection Pipe & All other process pipework at inspection platform level	27	09-Feb-24	14-Mar-24	-20	PST Stage 1 - PST3 - Scum Scraper/Scum Collection Pipe & All other process pipework at inspection platform level																											
ATALPST-4	PST Stage 1 - PST3 - All other process pipes above 11.8mPD including DO Pipes, Plant Service Water Pipes, Air Pipe	27	01-Feb-24	06-Mar-24	-5	PST Stage 1 - PST3 - All other process pipes above 11.8mPD including DO Pipes, Plant Service Water Pipes, Air Pipe																											
ATALPST-55	PST Stage 1 - Unloading of Stoplogs & Penstocks x23 Nos	9	04-Jan-24	13-Jan-24	-123	PST Stage 1 - Unloading of Stoplogs & Penstocks x23 Nos																											
ATALPST-68	PST Stage 1 - Installation of Stoplogs x2 Nos. & Penstocks x2 Nos. for Early PST1 T&C (5dno.gang, 2gang)	13	04-Jan-24	18-Jan-24	-123	PST Stage 1 - Installation of Stoplogs x2 Nos. & Penstocks x2 Nos. for Early PST1 T&C (5dno.gang, 2gang)																											
ATALPST-55	PST Stage 1 - Installation of Penstocks x1 Nos (5dno.)	5	19-Jan-24	24-Jan-24	19	PST Stage 1 - Installation of Penstocks x1 Nos (5dno.)																											
ATALPST-55	PST Stage 1 - Installation of Stoplogs x18 Nos (5dno.gang, 2gang)	45	19-Jan-24	14-Mar-24	-26	PST Stage 1 - Installation of Stoplogs x18 Nos (5dno.gang, 2gang)																											
ATALPST-55	PST Stage 1 - Inspection & Grouting of Penstocks x1 Nos	2	25-Jan-24	26-Jan-24	19	PST Stage 1 - Inspection & Grouting of Penstocks x1 Nos																											
ATALPST-56	PST Stage 1 - Leakage test - Combining Stoplogs/Penstocks	51	29-Jan-24	03-Apr-24	-26	PST Stage 1 - Leakage test - Combining Stoplogs/Penstocks																											
ATALPST-55	PST Stage 1 - Inspection & Grouting of Stoplogs x18 Nos	20	29-Feb-24	22-Mar-24	-26	PST Stage 1 - Inspection & Grouting of Stoplogs x18 Nos																											
ATALPST-667	PST Stage 1 - E&M Handover +11.75mPD & above (GLH-Inlet channel)	0	01-Feb-24		-9	PST Stage 1 - E&M Handover +11.75mPD & above (GLH-Inlet channel)																											
ATALPST-655	PST Stage 1 - E&M Handover below +7.835mPD (GLH-I pump room)	0	07-Feb-24		-53	PST Stage 1 - E&M Handover below +7.835mPD (GLH-I pump room)																											
ATALPST-656	PST Stage 1 - E&M Handover +7.835mPD (GLH-I, inlet channel)	0	15-Feb-24		-52	PST Stage 1 - E&M Handover +7.835mPD (GLH-I, inlet channel)																											
ATALPST-54	PST Stage 1 - Unloading of Stoplogs & Penstocks x14 Nos	6	15-Feb-24	21-Feb-24	-52	PST Stage 1 - Unloading of Stoplogs & Penstocks x14 Nos																											
ATALPST-54	PST Stage 1 - Installation of Penstocks x5 Nos (5dno.gang, 1gang)	25	15-Feb-24	14-Mar-24	-55	PST Stage 1 - Installation of Penstocks x5 Nos (5dno.gang, 1gang)																											
ATALPST-55	PST Stage 1 - Installation of Stoplogs x9 Nos (5dno.gang, 2gang)	26	15-Feb-24	15-Mar-24	-22	PST Stage 1 - Installation of Stoplogs x9 Nos (5dno.gang, 2gang)																											
ATALPST-55	PST Stage 1 - Channel Aeration System installation	34	15-Feb-24	25-Mar-24	-28	PST Stage 1 - Channel Aeration System installation																											
ATALPST-55	PST Stage 1 - Inspection & Grouting of Stoplogs x9 Nos	18	27-Feb-24	18-Mar-24	-22	PST Stage 1 - Inspection & Grouting of Stoplogs x9 Nos																											
ATALPST-55	PST Stage 1 - Inspection & Grouting of Penstocks x5 Nos	15	06-Mar-24	22-Mar-24	-26	PST Stage 1 - Inspection & Grouting of Penstocks x5 Nos																											
ATALPST-55	PST Stage 1 - Leakage test - Combining Stoplogs/Penstocks	12	18-Mar-24	03-Apr-24	-26	PST Stage 1 - Leakage test - Combining Stoplogs/Penstocks																											
ATALPST-56	PST Stage 1 - LALG Works	14	07-Feb-24	26-Feb-24	-50	PST Stage 1 - LALG Works																											
ATALPST-56	PST Stage 1 - PST Drainage Pipe	24	27-Feb-24	25-Mar-24	-53	PST Stage 1 - PST Drainage Pipe																											
ATALPST-56	PST Stage 1 - Sludge Pumps & Grinder x10 Sets	24	26-Mar-24	26-Apr-24	-52	PST Stage 1 - Sludge Pumps & Grinder x10 Sets																											
ATALPST-56	PST Stage 1 - Scum Pumps & Drainage Pumps x9 Sets	24	26-Mar-24	26-Apr-24	-52	PST Stage 1 - Scum Pumps & Drainage Pumps x9 Sets																											
ATALPST-67	PST Stage 1 - GLH-I - All other process pipes above 11.8 mPD including DO Pipes, Plant Service Water Pipes, Air Pipe	31	01-Feb-24	11-Mar-24	-9	PST Stage 1 - GLH-I - All other process pipes above 11.8 mPD including DO Pipes, Plant Service Water Pipes, Air Pipe																											
ATALPST-56	PST Stage 1 - Cable Containment Installation - LVSB@IW to Equipment	26	07-Mar-24	10-Apr-24	-70	PST Stage 1 - Cable Containment Installation - LVSB@IW to Equipment																											
ATALPST-56	PST Stage 1 - Local Control Panel Installation	26	14-Mar-24	17-Apr-24	-64	PST Stage 1 - Local Control Panel Installation																											
ATALPST-56	PST Stage 1 - Cabling Works	26	14-Mar-24	17-Apr-24	-70	PST Stage 1 - Cabling Works																											
ATALPST-56	PST Stage 1 - Termination Works	26	21-Mar-24	24-Apr-24	-70	PST Stage 1 - Termination Works																											
ATALPST-57	PST Stage 1 - Cable Containment Installation - LVSB@IW to Equipment	38	15-Feb-24	02-Apr-24	-52	PST Stage 1 - Cable Containment Installation - LVSB@IW to Equipment																											
ATALPST-57	PST Stage 1 - Cabling Works	38	15-Feb-24	02-Apr-24	-52	PST Stage 1 - Cabling Works																											
ATALPST-57	PST Stage 1 - Termination Works	40	05-Mar-24	24-Apr-24	-70	PST Stage 1 - Termination Works																											
ATALPST-57	PST Stage 1 - Instrument Installation & Inspection	38	26-Mar-24	14-May-24	-34	PST Stage 1 - Instrument Installation & Inspection																											
ATALPST-58	PST Stage 1 - SCADA - IO Point Test (not required for interim scheme T&C)	48	02-Mar-24	02-May-24	-70	PST Stage 1 - SCADA - IO Point Test (not required for interim scheme T&C)																											
ATALPST-58	PST Stage 1 - Electrical - Megger Test	29	18-Mar-24	24-Apr-24	-70	PST Stage 1 - Electrical - Megger Test																											
EW-1610	M/WPST Perimeter - Zone A&B - Haul road formation at +4mPD	16	08-Dec-23 A	23-Dec-23 A		M/WPST Perimeter - Zone A&B - Haul road formation at +4mPD																											
EW-1570	M/WPST Perimeter - Zone A&B - H/VL/ELV ducting	6	25-Dec-23 A	08-Jan-24	-35	M/WPST Perimeter - Zone A&B - H/VL/ELV ducting																											
EW-1710	M/WPST Perimeter - Cabling works from DSD11KV to Tx1	6	13-Jan-24	19-Jan-24	-39	M/WPST Perimeter - Cabling works from DSD11KV to Tx1																											
SDB-1880	SDB - Trial pit trench and UU Diversion for sheetpile and driven h-pile works	96	04-Dec-23 A	28-Mar-24	14	SDB - Trial pit trench and UU Diversion for sheetpile and driven h-pile works																											
SDB-2020	SDB - Pipe pile strengthening works for steel deck for road diversion at AGS Zone C	8	12-Jan-24*	20-Jan-24	-156	SDB - Pipe pile strengthening works for steel deck for road diversion at AGS Zone C																											
SDB-2000	SDB - Erection of steel deck for road diversion at AGS Zone C	12	22-Jan-24	03-Feb-24	-156	SDB - Erection of steel deck for road diversion at AGS Zone C																											
SDB-1320	SDB - Pipe plug at Existing PST 4	6	29-Jan-24*	03-Feb-24	147	SDB - Pipe plug at Existing PST 4																											
SDB-2010	SDB - Road diversion at AGS Zone C	2	09-Feb-24	14-Feb-24	141	SDB - Road diversion at AGS Zone C																											
SDB-1100	SDB - Demolition of Existing PST 4 overtime works	25	15-Feb-24	14-Mar-24	141	SDB - Demolition of Existing PST 4 overtime works																											
SDB-1800	SDB - Backfilling of Existing PST 4	6	15-Mar-24	21-Mar-24	141	SDB - Backfilling of Existing PST 4																											
SDB-1360	SDB-PD5 w/ obstruction (PST4) relocated	12	31-Oct-23 A	15-Nov-23 A		SDB-PD5 w/ obstruction (PST4) relocated																											
SDB-1290	SDB-PD7 relocated	12	16-Nov-23 A	02-Dec-23 A		SDB-PD7 relocated																											
SDB-1030	SDB-PD22 relocated	12	10-Jan-24	23-Jan-24	43	SDB-PD22 relocated																											
SDB-1090	SDB-PD24 w/ obstruction (PST1) relocated	12	16-Nov-23 A	08-Dec-23 A		SDB-PD24 w/ obstruction (PST1) relocated																											



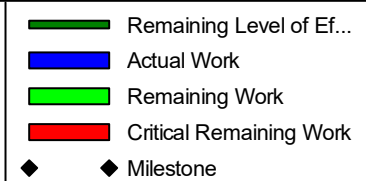
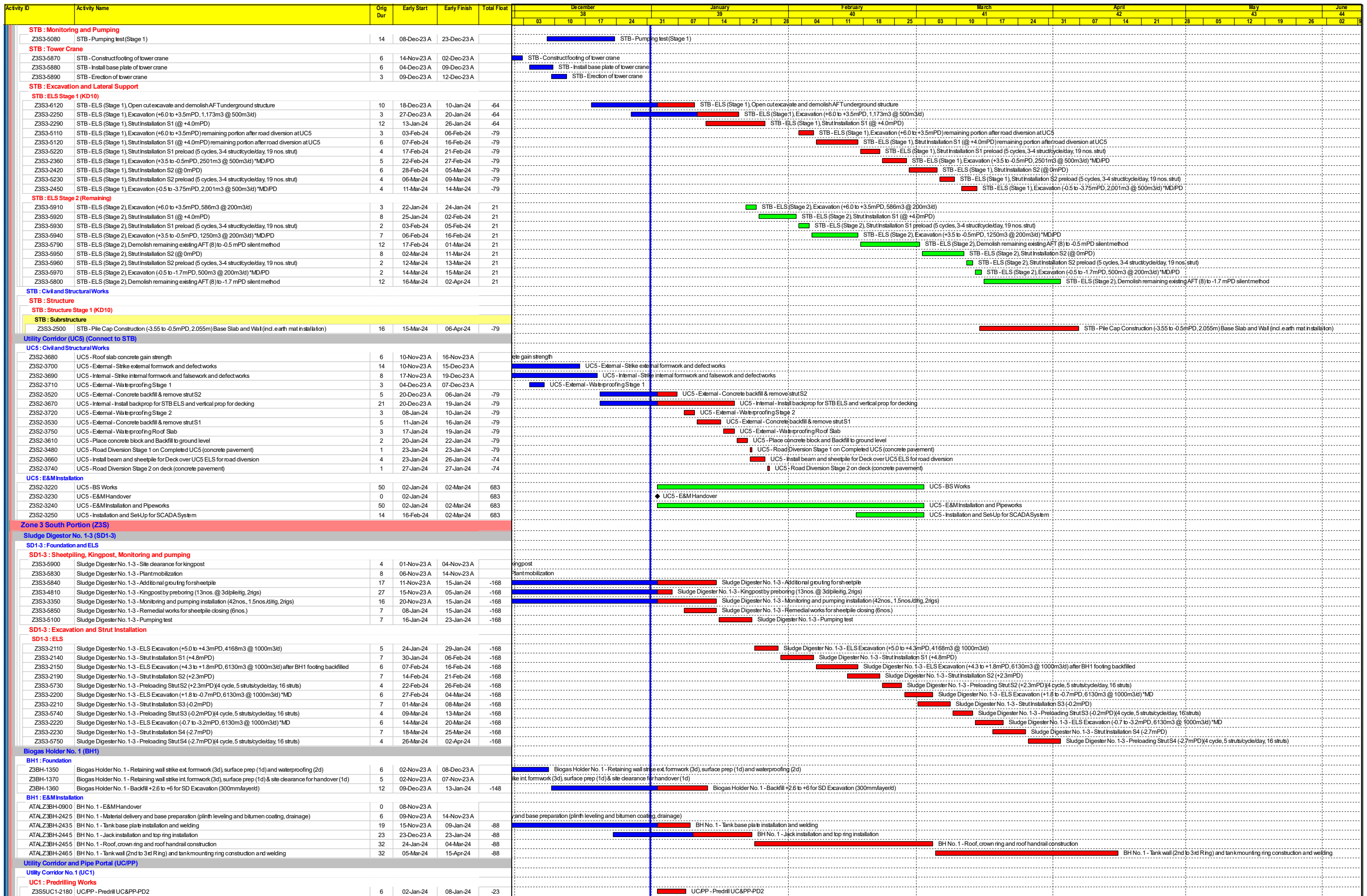
■ Remaining Level of Ef...
■ Actual Work
■ Remaining Work
■ Critical Remaining Work
◆ Milestone

Contract DC/2019/10 - YLEPP - Main Works for Stage 1

Monthly Progress Report No. 38- 3MRP (Dec 23)

Project ID : DWPr33_230117r1
 Layout : DC201910 MPR38-3MRP
 Page 6 of 9

Monthly Progress Report - 3MRP			
Date	Revision	Checked	Approved
31-Dec-23	Rev. 0		



Contract DC/2019/10 - YLEPP - Main Works for Stage 1

Monthly Progress Report No. 38- 3MRP (Dec 23)

Project ID : DWPr33_2301171
 Layout : DC201910 MPR38-3MRP
 Page 8 of 9

Monthly Progress Report - 3MRP			
Date	Revision	Checked	Approved
31-Dec-23	Rev. 0		



Activity ID	Activity Name	Orig Dur	Early Start	Early Finish	Total Float	December							January							February							March							April							May							June						
						03	10	17	24	31	07	14	21	28	04	11	18	25	03	10	17	24	31	07	14	21	28	05	12	19	26	02																						
Z3SSUC1-2200	UCPP - Predrill UC&PP-PD6	6	09-Jan-24	15-Jan-24	-23	UCPP - Predrill UC&PP-PD6																																																



- Remaining Level of Ef...
- Actual Work
- Remaining Work
- Critical Remaining Work
- Milestone

Contract DC/2019/10 - YLEPP - Main Works for Stage 1
Monthly Progress Report No. 38- 3MRP (Dec 23)

Project ID : DWPr33_230117r1
Layout : DC201910 MPR38-3MRP
Page 9 of 9

Monthly Progress Report - 3MRP			
Date	Revision	Checked	Approved
31-Dec-23	Rev. 0		