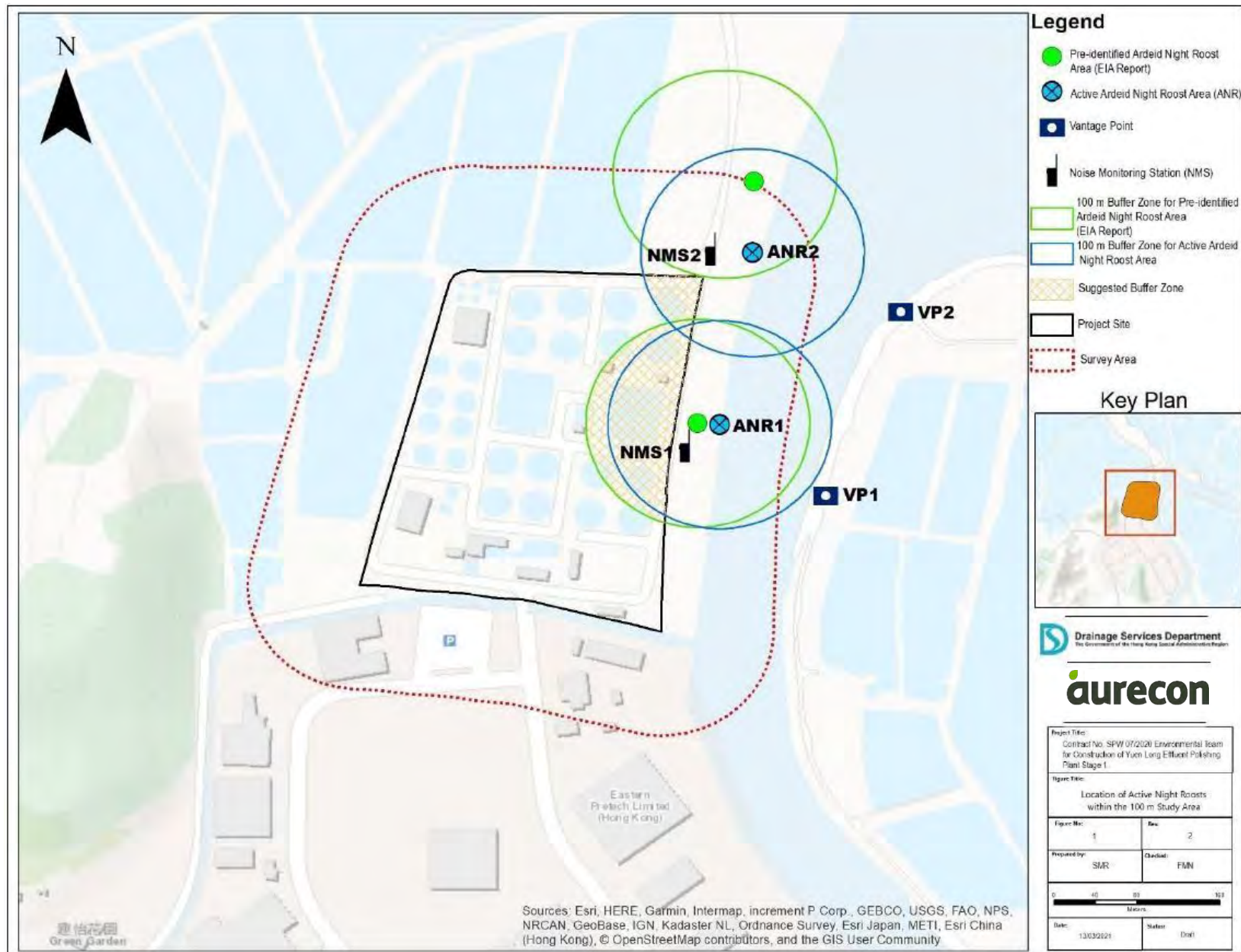


O.1 Map of the Monitoring Area, Vantage Points for Observation of Active Night Roosts and Noise Monitoring Stations



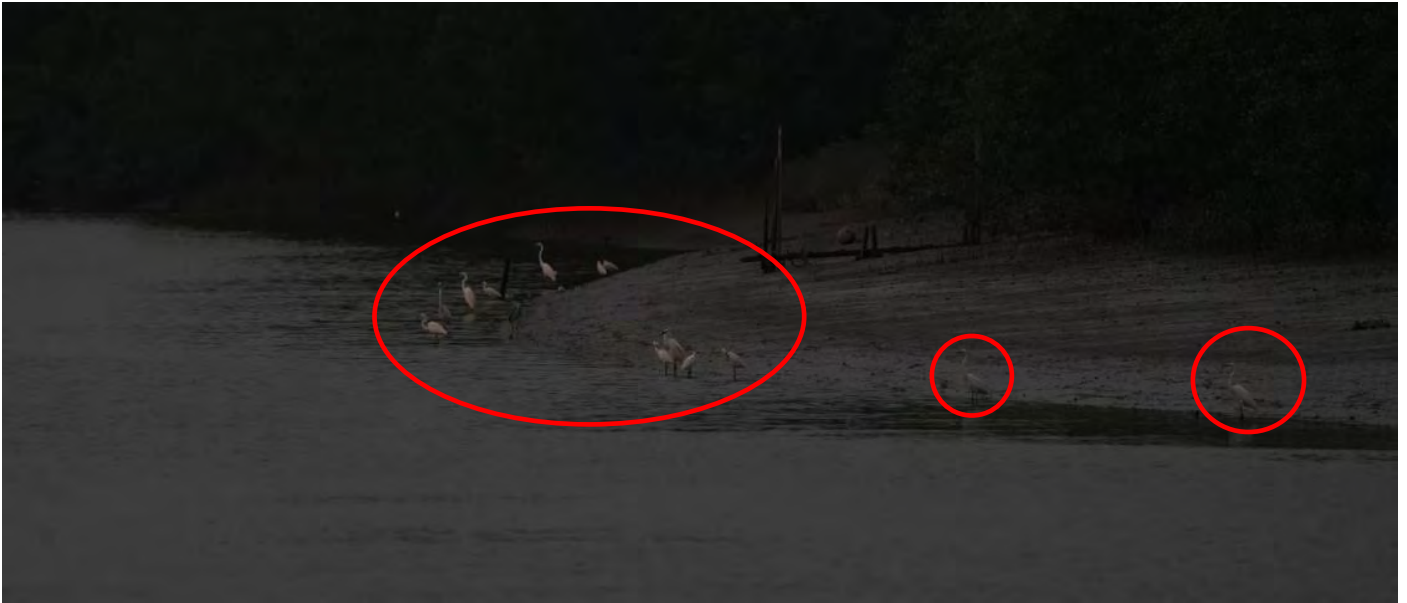
## O.2 Survey Photos

### O.2.1 Pre-roosting Aggregate



Appendix O.2.1a: Pre-roost aggregate of Chinese Pond Heron *Ardeola bacchus* in the mudflat east side of the Project boundary observed on 12 April 2024 around 18:24

## O.2.2 Active Night Roosting Site and Roosting Substrates



Appendix O.2.2a: Active night roost on *Sonneratia apetala* and *S. caseolaris* mangrove roosting substrate in the mudflat northeast side of the Project boundary observed on 12 April 2024 around 18:44.