

Activity ID	Activity Name	Orig Dur	Early Start	Early Finish	Total Float	January 39					February 40					March 41					April 42					May 43					June 44					July 45
						31	07	14	21	28	04	11	18	25	03	10	17	24	31	07	14	21	28	05	12	19	26	02	09	16	23	30	07			
YL Effluent Polishing Plant - Main Works Stage 1 - Detailed Works Programme DPv34_240208																																				
Contract Data Part 1																																				
Access Dates																																				
ADWA2	Work Area WA2 (sd) (new site possession) validity for 12 months and subject to renewal	757	5-Mar-21 A	22-Feb-25*	0																															
ADP3	Portion 3 (sd+1218d)	0	11-Mar-24*		0																															
Contract Key Dates																																				
CKD10	CKD10 - Completion of Civil & Structural works of roof floor of sludge thickening bldg (RevKD10=27Feb24)	0		27-Feb-24*	0																															
Environmental Constraints																																				
NMM2165	PS 1.105A Noise Mitigation Measures 2023-2024	152	1-Nov-23 A	31-Mar-24	0																															
EBS-2175	Egrets Breeding Season 2024	184	1-Mar-24*	31-Aug-24	0																															
Planned Completion																																				
Compensation Events																																				
CE321	Implementation of Compensation Event (CE) No.321 - Amber Rainstorm Warning and Inclement Weather in July 2023	0		28-Dec-23 A																																
CE347	Implementation of Compensation Event (CE) No.347 - Amber Rainstorm Warning and Inclement Weather in September 2023	0		30-Jan-24 A																																
Preliminary and Preparation Works																																				
Subletting																																				
SUB-270	Subletting for ELS works for IW, PST, SDB, STB, SD, MBB, TTB, underpass and open cut for admin. bldg	312	12-Oct-21 A	1-Mar-24	-229																															
SUB-380	Subletting for Sheet piling works for remaining areas	333	12-Oct-21 A	12-Apr-24	124																															
SUB-280	Subletting for RC works for IW, PST, SDB, STB, SD, Biogas holder, underpass and admin. bldg	256	29-Nov-21 A	14-Mar-24	-264																															
SUB-350	Subletting for Waterproofing membrane and protection board	300	29-Nov-21 A	6-Mar-24	-115																															
SUB-360	Subletting for Rebar fixing	86	29-Nov-21 A	1-Apr-24	-264																															
SUB-310	Subletting for Utilities Corridor ELS	60	8-Aug-22 A	11-Mar-24	-105																															
SUB-290	Subletting for ABWF works for IW, PST, SDB, STB, MBR, TTB and admin. bldg	60	1-Aug-23 A	31-Mar-24	-201																															
SUB-300	Subletting for RC works for MBR and TTB	60	7-Apr-24	5-Jun-24	-136																															
SUB-340	Subletting for Drainage, Sewage & waterworks	90	7-Apr-24	5-Jul-24	-136																															
Design Submission																																				
Temporary Works Design																																				
Mainstream Bio-Reactor System																																				
TWD-250	ELS - Obtain Approval	7	23-Aug-23 A	27-Feb-24	69																															
Sludge Thickening Building																																				
One-stage design																																				
TWD-210	ELS - Obtain Approval	7	10-Dec-22 A	26-Feb-24	-78																															
Sludge Digester 1-3 & Utilities Corridor																																				
TWD-370	ELS - Obtain Approval	7	21-Dec-22 A	29-Feb-24	-204																															
Sludge Dewatering and Underpass																																				
TWD-260	ELS - Prepare & Submission for PMs review	45	1-Mar-24	14-Apr-24	66																															
TWD-270	ELS - Review by PMs & ICE review (28 d + 7d)	35	15-Apr-24	19-May-24	66																															
Administration Building																																				
TWD-300	Open Cut Design - Prepare & Submission for PMs review	45	22-Apr-24	5-Jun-24	152																															
Walkway Across Tai Tseng Wai Nuluh																																				
TWD-600	Walkway - Prepare & Submission for PMs review	45	22-Apr-24	5-Jun-24	637																															
Modification of Existing Inspection Chamber & Inlet Effluent Pipes from NSWSPS																																				
TWD-700	ELS - Prepare & Submission for PMs review	45	26-Oct-22 A	7-Feb-24	-213																															
TWD-710	ELS - Review by PMs & ICE review (28 d + 7d)	35	8-Feb-24	13-Mar-24	-213																															
TWD-720	ELS - Resubmission for PMs & ICE review (7d prep & resub. + 7d ICE)	14	14-Mar-24	27-Mar-24	-213																															
TWD-730	ELS - Obtain Approval	7	28-Mar-24	3-Apr-24	-213																															
Temporary pipework between PST Stage 1 and A-Tank Inlet [Temporary pumping system]																																				
TWD-750	Hydraulic design - Prep(45d), Sub.&Review(30d), Comment&Resub (14d) & Approval (7d)	96	14-Sep-23 A	14-Feb-24	-167																															
Temporary pumping and pipeworks between existing Detritor and PST Stage 1 [Temp. pumping system]																																				
TWD-780	Hydraulic design - Prep(45d), Sub.&Review(21d), Comment&Resub (14d) & Approval (7d)	96	1-Aug-23 A	14-Feb-24	-192																															
Temporary Working Platform at ELS																																				
Temporary Working Platform at AGS ELS																																				
TWD-920	Temp. Working Platform - AGS ELS - Obtain Approval	7	8-Dec-23 A	7-Feb-24	-237																															
Temporary Working Platform at TTS ELS																																				
TWD-960	Temp. Working Platform - TTS ELS - Obtain Approval	7	12-Dec-23 A	29-Jan-24 A																																
Temporary diversion scheme for Early commissioning of SD, BH1, H2S and STB																																				
TWD-970	Temp. pipe. for BH1 Early Comm.-Prep(90d), Sub.&Review(30d) Comment&Resub(14d)&Approval(7d)	141	30-Jun-23 A	5-Apr-24	-101																															
TWD-1010	Temp. pipe. for SD1-2 Early Comm.-Prep(90d), Sub.&Review(30d) Comment&Resub(14d)&Approval(7d)	141	1-Feb-24	20-Jun-24	-90																															
Contractor's Permanent Works Design (Include ATAL)																																				
AIP																																				
Package 3A - Plant Service Water																																				
AP-520	E&MAP Report for Plant Service Water - Resubmission for further review	45	20-Dec-21 A	1-Mar-24	-7																															
AP-530	E&MAP Report for Plant Service Water - Obtain Approval	7	2-Mar-24	8-Mar-24	-7																															
Package 23A - Security, Public Address and Communication System																																				
AP-970	SPC - Resubmission for further review	45	12-Oct-23 A	9-Mar-24	-128																															
AP-980	SPC - Obtain Approval	13	10-Mar-24	22-Mar-24	-128																															
DDA																																				
Package 2 - Tertiary Treatment System																																				
DDA-170	Civil Req. for TTS (Foundation design) - Prepare(27d), Sub. & Review(45d), Comment & Resub.(14d), GEO(28d)&Approval (7d)	121	13-Jun-21 A	23-Feb-24	-140																															
DDA-150	Foundation for TTS - Prepare (90d), Sub. & Review(45d), Comment & Resub.(14d) & Approval (7d), GEO (28d)	213	8-Oct-21 A	19-Mar-24	-162																															
DDA-180	Civil Req. for TTS (Superstruct. design) - Prepare (147d), Sub. & Review(45d), Comment & Resub.(14d) & Approval (7d)	213	11-Oct-21 A	23-Feb-24	41																															



- Remaining Level of Eff.
- Actual Work
- Remaining Work
- Critical Remaining Work
- ◆ Milestone

Contract DC/2019/10 - YLEPP - Main Works for Stage 1

Monthly Progress Report No. 39- 3MRP (Jan 24)

Project ID : DWPr34_240209
 Layout : DC201910 MPR39-3MRP
 Page 1 of 11

Monthly Progress Report - 3MRP			
Date	Revision	Checked	Approved
31-Jan-24	Rev. 0		

Activity ID	Activity Name	Orig Dur	Early Start	Early Finish	Total Float	January 39							February 40							March 41							April 42							May 43							June 44							July 45
						31	07	14	21	28	04	11	18	25	03	10	17	24	31	07	14	21	28	05	12	19	26	02	09	16	23	30	07															
DDA-200	Mechanical for TTS - Prepare (60d), Sub. & Review(45d), Comment & Resub.(14d) & Approval (7d)	213	31-Dec-21 A	24-Feb-24	124	Mechanical for TTS - Prepare (60d), Sub. & Review(45d), Comment & Resub.(14d) & Approval (7d)																																										
DDA-210	Electrical & Control for TTS - Prepare (60d), Sub. & Review(45d), Comment & Resub.(14d) & Approval (7d)	213	31-Dec-21 A	24-Feb-24	124	Electrical & Control for TTS - Prepare (60d), Sub. & Review(45d), Comment & Resub.(14d) & Approval (7d)																																										
DDA-140	Architectural for TTS - Prepare (60d), Sub. & Review(45d), Comment & Resub.(14d) & Approval (7d)	126	17-Nov-22 A	25-May-24	-70	Architectural for TTS - Prepare (60d), Sub. & Review(45d), Comment & Resub.(14d) & Approval (7d)																																										
DDA-160	Civil & Structural for TTS - Prepare (120d), Sub. & Review(45d), Comment & Resub.(14d) & Approval (7d)	177	17-Nov-22 A	24-May-24	-231	Civil & Structural for TTS - Prepare (120d), Sub. & Review(45d), Comment & Resub.(14d) & Approval (7d)																																										
DDA-220	Building Services (BS) for TTS - Prepare (60d), Sub. & Review(45d), Comment & Resub.(14d) & Approval (7d)	199	30-Oct-23 A	25-May-24	33	Building Services (BS) for TTS - Prepare (60d), Sub. & Review(45d), Comment & Resub.(14d) & Approval (7d)																																										
Package 3 - Mainstream Bio-Reactor System																																																
DDA-260	Civil Req. for MBS-AGS (Foundation design) - Prepare (60d), Sub. & Review(45d), Comment & Resub.(14d) & Approval (7d)	126	9-Jun-21 A	23-Feb-24	-69	Civil Req. for MBS-AGS (Foundation design) - Prepare (60d), Sub. & Review(45d), Comment & Resub.(14d) & Approval (7d)																																										
DDA-280	P&ID for MBS (60d), Sub. & Review(45d), Comment & Resub.(14d) & Approval (7d)	126	8-Oct-21 A	13-Mar-24	160	P&ID for MBS (60d), Sub. & Review(45d), Comment & Resub.(14d) & Approval (7d)																																										
DDA-290	Mechanical for MBS - Prepare (60d), Sub. & Review(45d), Comment & Resub.(14d) & Approval (7d)	126	8-Oct-21 A	19-Mar-24	160	Mechanical for MBS - Prepare (60d), Sub. & Review(45d), Comment & Resub.(14d) & Approval (7d)																																										
DDA-300	Electrical & Control for MBS - Prepare (60d), Sub. & Review(45d), Comment & Resub.(14d) & Approval (7d)	405	8-Oct-21 A	13-Mar-24	166	Electrical & Control for MBS - Prepare (60d), Sub. & Review(45d), Comment & Resub.(14d) & Approval (7d)																																										
DDA-270	Civil Req. for MBS-AGS (Superstruct design) - Prepare (60d), Sub. & Review(45d), Comment & Resub.(14d) & Approval (7d)	126	1-Mar-22 A	23-Feb-24	-69	Civil Req. for MBS-AGS (Superstruct design) - Prepare (60d), Sub. & Review(45d), Comment & Resub.(14d) & Approval (7d)																																										
DDA-240	Foundation for MBS - Prepare (97d), Sub. & Review(45d), Comment & Resub.(14d) GEO(28d) & Approval (7d)	230	18-Mar-22 A	10-May-24	-136	Foundation for MBS - Prepare (97d), Sub. & Review(45d), Comment & Resub.(14d) GEO(28d) & Approval (7d)																																										
DDA-250	Civil & Structural for MBS - Prepare (60d), Sub. & Review(45d), Comment & Resub.(14d) & Approval (7d)	170	20-Jan-23 A	29-May-24	-69	Civil & Structural for MBS - Prepare (60d), Sub. & Review(45d), Comment & Resub.(14d) & Approval (7d)																																										
DDA-1530	VCAB for AGS & TTS - Prepare (30d), Sub. & Review(30d)	204	16-Jun-23 A	23-May-24	66	VCAB for AGS & TTS - Prepare (30d), Sub. & Review(30d)																																										
DDA-310	Building Services (BS) for MBS - Prepare (60d), Sub. & Review(45d), Comment & Resub.(14d) & Approval (7d)	142	1-Feb-24	21-Jun-24	66	Building Services (BS) for MBS - Prepare (60d), Sub. & Review(45d), Comment & Resub.(14d) & Approval (7d)																																										
Package 5A - Master Water Meter Room																																																
DDA-390	P&ID for MMWC - MBS (60d), Sub. & Review(45d), Comment & Resub.(14d) & Approval (7d)	64	26-Jun-23 A	7-Jun-24	104	P&ID for MMWC - MBS (60d), Sub. & Review(45d), Comment & Resub.(14d) & Approval (7d)																																										
DDA-400	Mechanical for MMWC - Prepare (60d), Sub. & Review(45d), Comment & Resub.(14d) & Approval (7d)	220	30-Oct-23 A	7-Jun-24	821	Mechanical for MMWC - Prepare (60d), Sub. & Review(45d), Comment & Resub.(14d) & Approval (7d)																																										
DDA-410	Electrical & Control for MMWC - Prepare (60d), Sub. & Review(45d), Comment & Resub.(14d) & Approval (7d)	220	30-Oct-23 A	7-Jun-24	821	Electrical & Control for MMWC - Prepare (60d), Sub. & Review(45d), Comment & Resub.(14d) & Approval (7d)																																										
Package 5B - Plant Service Water (PSW)																																																
DDA-1050	Civil Requirement Drawings - Prep(60d), Sub. & Review(45d), Comment & Resub.(14d) & Approval (7d)	126	12-Jun-21 A	17-Apr-24	14	Civil Requirement Drawings - Prep(60d), Sub. & Review(45d), Comment & Resub.(14d) & Approval (7d)																																										
DDA-1040	Piping & Instrumentation Diagram (P&ID) - Prep(30d), Sub. & Review(28d), Comment & Resub.(14d) & Approval (7d)	220	26-Jun-23 A	6-Jul-24	-10	Piping & Instrumentation Diagram (P&ID) - Prep(30d), Sub. & Review(28d), Comment & Resub.(14d) & Approval (7d)																																										
DDA-1060	Electrical & Control for PSW - Prep(60d), Sub. & Review(45d), Comment & Resub.(14d) & Approval (7d)	157	1-Feb-24	6-Jul-24	-10	Electrical & Control for PSW - Prep(60d), Sub. & Review(45d), Comment & Resub.(14d) & Approval (7d)																																										
DDA-1070	Mechanical for PSW - Prep(60d), Sub. & Review(45d), Comment & Resub.(14d) & Approval (7d)	157	1-Feb-24	6-Jul-24	-10	Mechanical for PSW - Prep(60d), Sub. & Review(45d), Comment & Resub.(14d) & Approval (7d)																																										
Package 6 - Sludge Thickening Chemical and Dosing System																																																
DDA-1120	P&ID for STCDS - Prepare (60d), Sub. & Review(45d), Comment & Resub.(14d) & Approval (7d)	335	14-Aug-21 A	28-Apr-24	249	P&ID for STCDS - Prepare (60d), Sub. & Review(45d), Comment & Resub.(14d) & Approval (7d)																																										
DDA-430	Found. for STCS, Waste Gas Burner & Guard Hse - Prepare (60d), Sub. & Review(45d), Comment & Resub.(14d), GEO(28d) & Approval (7d)	96	9-Nov-21 A	30-Apr-24	625	Found. for STCS, Waste Gas Burner & Guard Hse - Prepare (60d), Sub. & Review(45d), Comment & Resub.(14d), GEO(28d) & Approval (7d)																																										
DDA-440	Civil & Struct. for STCS, WGB & Guard Hse - Prepare (60d), Sub. & Review(45d), Comment & Resub.(14d) & Approval (7d)	250	9-Nov-21 A	30-Apr-24	447	Civil & Struct. for STCS, WGB & Guard Hse - Prepare (60d), Sub. & Review(45d), Comment & Resub.(14d) & Approval (7d)																																										
DDA-440B	Civil Req. for STCDS - Prepare (60d), Sub. & Review(45d), Comment & Resub.(14d) & Approval (7d)	300	15-Nov-21 A	29-Feb-24	308	Civil Req. for STCDS - Prepare (60d), Sub. & Review(45d), Comment & Resub.(14d) & Approval (7d)																																										
DDA-1130	Mechanical for STCDS - Prepare (60d), Sub. & Review(45d), Comment & Resub.(14d) & Approval (7d)	340	16-Nov-21 A	30-Apr-24	625	Mechanical for STCDS - Prepare (60d), Sub. & Review(45d), Comment & Resub.(14d) & Approval (7d)																																										
DDA-1140	Electrical & Control for STCDS - Prepare (60d), Sub. & Review(45d), Comment & Resub.(14d) & Approval (7d)	315	30-Nov-21 A	2-Mar-24	625	Electrical & Control for STCDS - Prepare (60d), Sub. & Review(45d), Comment & Resub.(14d) & Approval (7d)																																										
DDA-1520	Mechanical Ventilation and Air conditional System Design for Sludge Thickening Building (STB)	320	16-Jun-22 A	30-Apr-24	287	Mechanical Ventilation and Air conditional System Design for Sludge Thickening Building (STB)																																										
DDA-1510	Plumbing and Drainage System Design for Sludge Thickening Building (STB)	320	7-Jul-22 A	30-Apr-24	287	Plumbing and Drainage System Design for Sludge Thickening Building (STB)																																										
DDA-1500	Fire Services Design for Sludge Thickening Building (STB)	320	8-Jul-22 A	30-Apr-24	287	Fire Services Design for Sludge Thickening Building (STB)																																										
DDA-1150	Building Services for STCDS - Prepare (60d), Sub. & Review(45d), Comment & Resub.(14d) & Approval (7d)	126	24-Oct-22 A	30-Apr-24	625	Building Services for STCDS - Prepare (60d), Sub. & Review(45d), Comment & Resub.(14d) & Approval (7d)																																										
Package 7 - CLP Substation and 11kV Switchgear House																																																
DDA-480	UPS System for CLP Sub. & 11kV Switchgear Hse - Prepare (102d), Sub. & Review(45d), Comment & Resub.(14d) & Approval (7d)	168	3-Jun-21 A	16-Feb-24	-82	UPS System for CLP Sub. & 11kV Switchgear Hse - Prepare (102d), Sub. & Review(45d), Comment & Resub.(14d) & Approval (7d)																																										
Package 9 - Inlet Work (IW)																																																
DDA-1190	Mechanical for Inlet Work - Prepare (28d), Sub. & Review(28d), Comment & Resub.(14d) & Approval (7d)	120	9-Aug-21 A	1-Mar-24	-135	Mechanical for Inlet Work - Prepare (28d), Sub. & Review(28d), Comment & Resub.(14d) & Approval (7d)																																										
DDA-1200	Electrical & Control for Inlet Work - Prepare (28d), Sub. & Review(28d), Comment & Resub.(14d) & Approval (7d)	120	30-Oct-21 A	1-Mar-24	-155	Electrical & Control for Inlet Work - Prepare (28d), Sub. & Review(28d), Comment & Resub.(14d) & Approval (7d)																																										
DDA-1210	Building Services for Inlet Work - Prepare (28d), Sub. & Review(28d), Comment & Resub.(14d) & Approval (7d)	76	30-Mar-22 A	1-Mar-24	-155	Building Services for Inlet Work - Prepare (28d), Sub. & Review(28d), Comment & Resub.(14d) & Approval (7d)																																										
Package 10 - Primary Sedimentation Tank (PST)																																																
DDA-1250	Electrical & Control for PST - Prepare (28d), Sub. & Review(28d), Comment & Resub.(14d) & Approval (7d)	48	31-Aug-21 A	1-Mar-24	-203	Electrical & Control for PST - Prepare (28d), Sub. & Review(28d), Comment & Resub.(14d) & Approval (7d)																																										
DDA-1260	Building Services for PST - Prepare (28d), Sub. & Review(28d), Comment & Resub.(14d) & Approval (7d)	90	1-Oct-21 A	1-Mar-24	-203	Building Services for PST - Prepare (28d), Sub. & Review(28d), Comment & Resub.(14d) & Approval (7d)																																										
Package 11 - Control and Monitoring System																																																
DDA-580	Power Quality & Energy Management System (PQEMS) - Prep(28d), Sub. & Review(28d), Comment & Resub.(14d) & Approval (7d)	130	2-Oct-21 A	31-Mar-24	31	Power Quality & Energy Management System (PQEMS) - Prep(28d), Sub. & Review(28d), Comment & Resub.(14d) & Approval (7d)																																										
DDA-550	Supervisory Control & Data Application (SCADA) System - Prep(28d), Sub. & Review(28d), Comment & Resub.(14d) & Approval (7d)	238	24-Apr-23 A	31-Mar-24	31	Supervisory Control & Data Application (SCADA) System - Prep(28d), Sub. & Review(28d), Comment & Resub.(14d) & Approval (7d)																																										
DDA-1270	Gas Detection System - Prep(28d), Sub. & Review(28d), Comment & Resub.(14d) & Approval (7d)	91	8-May-23 A	31-Mar-24	31	Gas Detection System - Prep(28d), Sub. & Review(28d), Comment & Resub.(14d) & Approval (7d)																																										
DDA-560	Computerised Maintenance Management System (CMMS) - Prep(28d), Sub. & Review(28d), Comment & Resub.(14d) & Approval (7d)	335	1-Feb-24	31-Dec-24	31	Computerised Maintenance Management System (CMMS) - Prep(28d), Sub. & Review(28d), Comment & Resub.(14d) & Approval (7d)																																										
DDA-570	Information and Document Management System (IDMS) - Prep(28d), Sub. & Review(28d), Comment & Resub.(14d) & Approval (7d)	335	1-Feb-24	31-Dec-24	31	Information and Document Management System (IDMS) - Prep(28d), Sub. & Review(28d), Comment & Resub.(14d) & Approval (7d)																																										
DDA-1280	Data Collection, Management, Analysis & Model System - Prep(28d), Sub. & Review(28d), Comment & Resub.(14d) & Approval (7d)	335	1-Feb-24	31-Dec-24	31	Data Collection, Management, Analysis & Model System - Prep(28d), Sub. & Review(28d), Comment & Resub.(14d) & Approval (7d)																																										
Package 12 - Chemical System for STB																																																
DDA-650	Chemical System for Sludge Thickening Building (STB) - Prep(60d), Sub. & Review(45d), Comment & Resub.(14d) & Approval (7d)	150	1-Feb-24	29-Jun-24	187	Chemical System for Sludge Thickening Building (STB) - Prep(60d), Sub. & Review(45d), Comment & Resub.(14d) & Approval (7d)																																										
Package 13 - Pipework System																																																
DDA-660	Pipeworks System for Sludge Thickening Building (STB) - Prep(60d), Sub. & Review(45d), Comment & Resub.(14d) & Approval(7d)	126	1-Feb-24	5-Jun-24	245	Pipeworks System for Sludge Thickening Building (STB) - Prep(60d), Sub. & Review(45d), Comment & Resub.(14d) & Approval(7d)																																										
DDA-1030	Pipeworks System for Sludge Digesters - Prep(60d), Sub. & Review(45d), Comment & Resub.(14d) & Approval (7d)	126	1-Feb-24	5-Jun-24	-52	Pipeworks System for Sludge Digesters - Prep(60d), Sub. & Review(45d), Comment & Resub.(14d) & Approval (7d)																																										
Package 14 - Sludge Anaerobic Digestion System (SDT)																																																
DDA-1320	Electrical & Control for SDT & UC/PP - Prepare (65d), Sub. & Review(45d), Comment & Resub.(14d) & Approval (7d)	460	2-Jul-21 A	30-Apr-24	-16	Electrical & Control for SDT & UC/PP - Prepare (65d), Sub. & Review(45d), Comment & Resub.(14d) & Approval (7d)																																										
DDA-1340	Civil Req. Drawing for UC/PP - Prepare (47d), Sub. & Review(45d), Comment & Resub.(14d) & Approval (7d)	580	10-Jul-21 A	25-Mar-24	-16	Civil Req. Drawing for UC/PP - Prepare (47d), Sub. & Review(45d), Comment & Resub.(14d) & Approval (7d)																																										
DDA-1330	Building Services for SDT & UC/PP - Prepare (56d), Sub. & Review(45d), Comment & Resub.(14d) & Approval (7d)	181	2-May-23 A	30-Apr-24	-16	Building Services for SDT & UC/PP - Prepare (56d), Sub. & Review(45d), Comment & Resub.(14d) & Approval (7d)																																										
Package 15 - Biogas H2S Removal, Storage and Delivery System																																																
DDA-1390	Building Services for Biogas H2S Removal System - Prepare(28d), Sub. & Review(28d), Comment & Resub.(14d) & Approval (7d)	137	31-May-23 A	31-Mar-24	-119	Building Services for Biogas H2S Removal System - Prepare(28d), Sub. & Review(28d), Comment & Resub.(14d) & Approval (7d)																																										
DDA-1380	Electrical & Control for Biogas H2S Removal System - Prepare(28d), Sub. & Review(28d), Comment & Resub.(14d) & Approval (7d)	105	25-Sep-23 A	31-Mar-24	-119	Electrical & Control for Biogas H2S Removal System - Prepare(28d), Sub. & Review(28d), Comment & Resub.(14d) & Approval (7d)																																										
Package 16 - Deodorization Unit System																																																
DDA-1420	Mechanical for DOU No. 1 - Prepare(28d), Sub. & Review(28d), Comment & Resub.(14d) & Approval(7d)	78	4-Mar-22 A	24-Feb-24	-39	Mechanical for DOU No. 1 - Prepare(28d), Sub. & Review(28d), Comment & Resub.(14d) & Approval(7d)																																										
DDA-1440	Mechanical for DOU No. 3 - Prepare(28d), Sub. & Review(28d), Comment & Resub.(14d) & Approval(7d)	300	17-Jul-22 A	2-Mar-24	335	Mechanical for DOU No. 3 - Prepare(28d), Sub. & Review(28d), Comment & Resub.(14d) & Approval(7d)																																										



■ Remaining Level of Eff...
■ Actual Work
■ Remaining Work
■ Critical Remaining Work
◆ Milestone

Contract DC/2019/10 - YLEPP - Main Works for Stage 1

Monthly Progress Report No. 39- 3MRP (Jan 24)

Project ID : DWPr34_240209
 Layout : DC201910 MPR39-3MRP
 Page 2 of 11

Monthly Progress Report - 3MRP			
Date	Revision	Checked	Approved
31-Jan-24	Rev. 0		

Activity ID	Activity Name	Orig Dur	Early Start	Early Finish	Total Float	January 39					February 40					March 41					April 42					May 43					June 44					July 45
						31	07	14	21	28	04	11	18	25	03	10	17	24	31	07	14	21	28	05	12	19	26	02	09	16	23	30	07			
DDA-1430	Mechanical for DOU No. 2A and 2B - Prepare (28d) Sub & Review (28d) Comment & Resub (14d) & Approval (7d)	122	13-Oct-23 A	1-Apr-24	305	Mechanical for DOU No. 2A and 2B - Prepare (28d) Sub & Review (28d) Comment & Resub (14d) & Approval (7d)																														
Package 17 - Sludge Dewatering Building (SDB)																																				
DDA-910	Roof Rainwater Collection System for (SDB) - Prep (60d), Sub & Review (45d), Comment & Resub (21d) & Approval (7d)	265	2-Mar-24	21-Nov-24	110	Roof Rainwater Collection System for (SDB) - Prep (60d), Sub & Review (45d), Comment & Resub (21d) & Approval (7d)																														
DDA-920	Fire Services System for SDB - Prep (60d), Sub & Review (45d), Comment & Resub (14d) & Approval (7d)	272	2-Mar-24	28-Nov-24	110	Fire Services System for SDB - Prep (60d), Sub & Review (45d), Comment & Resub (14d) & Approval (7d)																														
DDA-930	Mechanical for Sludge Dewatering Building (SDB) - Prep (60d), Sub & Review (45d), Comment & Resub (14d) & Approval (7d)	272	2-Mar-24	28-Nov-24	549	Mechanical for Sludge Dewatering Building (SDB) - Prep (60d), Sub & Review (45d), Comment & Resub (14d) & Approval (7d)																														
DDA-940	Plumbing System for Sludge Dewatering Bldg (SDB) - Prep (60d), Sub & Review (45d), Comment & Resub (14d) & Approval (7d)	272	2-Mar-24	28-Nov-24	549	Plumbing System for Sludge Dewatering Bldg (SDB) - Prep (60d), Sub & Review (45d), Comment & Resub (14d) & Approval (7d)																														
DDA-950	BS for Sludge Dewatering Building (SDB) - Prep (118d), Sub & Review (45d), Comment & Resub (14d) & Approval (7d)	272	2-Mar-24	28-Nov-24	110	BS for Sludge Dewatering Building (SDB) - Prep (118d), Sub & Review (45d), Comment & Resub (14d) & Approval (7d)																														
Package 18 - Miscellaneous																																				
DDA-540	Civil & Structural for Misc. Manholes, Draw Pits, Fence Wall - Prep (60d), Sub & Review (45d), Comment & Resub (14d) & Approval (7d)	255	29-Feb-24	9-Nov-24	104	Civil & Structural for Misc. Manholes, Draw Pits, Fence Wall - Prep (60d), Sub & Review (45d), Comment & Resub (14d) & Approval (7d)																														
Package 19 - Elevated Walkways																																				
DDA-710	Civil & Structural for Elevated Walkways - Prep (60d), Sub & Review (45d), Comment & Resub (14d) & Approval (7d), GEO (28d)	101	29-Feb-24	8-Jun-24	728	Civil & Structural for Elevated Walkways - Prep (60d), Sub & Review (45d), Comment & Resub (14d) & Approval (7d), GEO (28d)																														
Package 20 - Trelis																																				
DDA-720	Civil & Structural for Trelis - Prep (60d), Sub & Review (45d), Comment & Resub (14d) & Approval (7d)	207	1-Feb-24	25-Aug-24	562	Civil & Structural for Trelis - Prep (60d), Sub & Review (45d), Comment & Resub (14d) & Approval (7d)																														
Package 21 - Steel Working Platform																																				
DDA-730	Civil & Structural for Steel Working Platform - Prep (60d), Sub & Review (45d), Comment & Resub (14d) & Approval (7d)	102	1-Feb-24	12-May-24	667	Civil & Structural for Steel Working Platform - Prep (60d), Sub & Review (45d), Comment & Resub (14d) & Approval (7d)																														
Package 22 - Sampling System of YLEPP																																				
DDA-740	Sampling System for IW&PST - Prep (60d), Sub & Review (45d), Comment & Resub (14d) & Approval (7d)	62	7-Jul-23 A	30-Mar-24	-144	Sampling System for IW&PST - Prep (60d), Sub & Review (45d), Comment & Resub (14d) & Approval (7d)																														
DDA-1630	Sampling System for STB - Prep (60d), Sub & Review (45d), Comment & Resub (14d) & Approval (7d)	128	1-Feb-24	7-Jun-24	-77	Sampling System for STB - Prep (60d), Sub & Review (45d), Comment & Resub (14d) & Approval (7d)																														
DDA-1610	Sampling System for AGS&TTB - Prep (60d), Sub & Review (45d), Comment & Resub (14d) & Approval (7d)	127	25-Feb-24	30-Jun-24	-77	Sampling System for AGS&TTB - Prep (60d), Sub & Review (45d), Comment & Resub (14d) & Approval (7d)																														
DDA-1620	Sampling System for SDT - Prep (60d), Sub & Review (45d), Comment & Resub (14d) & Approval (7d)	127	25-Feb-24	30-Jun-24	-77	Sampling System for SDT - Prep (60d), Sub & Review (45d), Comment & Resub (14d) & Approval (7d)																														
Package 23 - Security, Public Address and Communication System																																				
DDA-750	SPC site-wide ACS - Prep (60d), Sub & Review (45d), Comment & Resub (14d) & Approval (7d)	98	21-Jun-23 A	7-Apr-24	-152	SPC site-wide ACS - Prep (60d), Sub & Review (45d), Comment & Resub (14d) & Approval (7d)																														
Package 24 - Administration Building (ADB)																																				
DDA-0960	Architectural for Administration Building (ADB) - Prep (60d), Sub & Review (45d), Comment & Resub (14d) & Approval (7d)	126	1-Feb-24*	5-Jun-24	-48	Architectural for Administration Building (ADB) - Prep (60d), Sub & Review (45d), Comment & Resub (14d) & Approval (7d)																														
Design out of ATAL's Scope																																				
DDA-1540	Drainage systems at base slab / foundation levels - Prep (60d), Sub & Review (45d), Comment & Resub (14d) & Approval (7d)	126	24-Aug-22 A	6-Apr-24	321	Drainage systems at base slab / foundation levels - Prep (60d), Sub & Review (45d), Comment & Resub (14d) & Approval (7d)																														
DDA-1560	Street fire hydrant system - Prep (60d), Sub & Review (45d), Comment & Resub (14d) & Approval (7d)	126	1-Feb-24	5-Jun-24	224	Street fire hydrant system - Prep (60d), Sub & Review (45d), Comment & Resub (14d) & Approval (7d)																														
DDA-1550	Rainwater drainage systems - Prep (60d), Sub & Review (45d), Comment & Resub (14d) & Approval (7d)	126	7-Apr-24	10-Aug-24	599	Rainwater drainage systems - Prep (60d), Sub & Review (45d), Comment & Resub (14d) & Approval (7d)																														
Technical Submission																																				
Factory Acceptance Test Plans																																				
SUBM-1110	Submit/Review/Approval Factory Acceptance Test Plans - Disc filter system	120	1-Dec-23 A	16-May-24	-59	Submit/Review/Approval Factory Acceptance Test Plans - Disc filter system																														
SUBM-1130	Submit/Review/Approval Factory Acceptance Test Plans - SCADA system	120	1-Dec-23 A	16-May-24	3	Submit/Review/Approval Factory Acceptance Test Plans - SCADA system																														
Operation and Maintenance (O&M) Manuals and Installation Manuals (PS 34.20(11)(12)(13))																																				
Inlet Works and Primary Sedimentation Tank																																				
SUBM-1070	Submit/Review/Approval Operation and Maintenance (O&M) Manuals and Installation Manuals - 1st draft	60	5-Jan-23 A	2-Mar-24	-204	Submit/Review/Approval Operation and Maintenance (O&M) Manuals and Installation Manuals - 1st draft																														
SUBM-1200	Submit/Review/Approval Operation and Maintenance (O&M) Manuals and Installation Manuals - revised draft	60	3-Mar-24	1-May-24	-175	Submit/Review/Approval Operation and Maintenance (O&M) Manuals and Installation Manuals - revised draft																														
AGS and TTS system																																				
SUBM-1220	Submit/Review/Approval Operation and Maintenance (O&M) Manuals and Installation Manuals - 1st draft	60	3-Mar-24	1-May-24	72	Submit/Review/Approval Operation and Maintenance (O&M) Manuals and Installation Manuals - 1st draft																														
Sludge Thickening System																																				
SUBM-1250	Submit/Review/Approval Operation and Maintenance (O&M) Manuals and Installation Manuals - 1st draft	60	3-Mar-24	1-May-24	514	Submit/Review/Approval Operation and Maintenance (O&M) Manuals and Installation Manuals - 1st draft																														
Sludge Disgestion System																																				
SUBM-1310	Submit/Review/Approval Operation and Maintenance (O&M) Manuals and Installation Manuals - 1st draft	60	3-Mar-24	1-May-24	-204	Submit/Review/Approval Operation and Maintenance (O&M) Manuals and Installation Manuals - 1st draft																														
Biogas H2S Removal System																																				
SUBM-1280	Submit/Review/Approval Operation and Maintenance (O&M) Manuals and Installation Manuals - 1st draft	60	3-Mar-24	1-May-24	-204	Submit/Review/Approval Operation and Maintenance (O&M) Manuals and Installation Manuals - 1st draft																														
Commissioning Plan and Procedures (PS34.20(10))																																				
SUBM-1080	Employment of HOKLAS laboratory for commissioning test	60	23-May-22 A	21-Mar-24	-163	Employment of HOKLAS laboratory for commissioning test																														
SUBM-1000	Submit/Review/Approval Commissioning Plan and Procedures - Early commissioning of IW&PST (KD3)	120	22-Mar-24	19-Jul-24	-163	Submit/Review/Approval Commissioning Plan and Procedures - Early commissioning of IW&PST (KD3)																														
SUBM-1020	Submit/Review/Approval Commissioning Plan and Procedures - AGS	120	22-Mar-24	19-Jul-24	38	Submit/Review/Approval Commissioning Plan and Procedures - AGS																														
SUBM-1030	Submit/Review/Approval Commissioning Plan and Procedures - TTS	120	22-Mar-24	19-Jul-24	450	Submit/Review/Approval Commissioning Plan and Procedures - TTS																														
SUBM-1040	Submit/Review/Approval Commissioning Plan and Procedures - STB	120	22-Mar-24	19-Jul-24	495	Submit/Review/Approval Commissioning Plan and Procedures - STB																														
SUBM-1050	Submit/Review/Approval Commissioning Plan and Procedures - SDT	120	22-Mar-24	19-Jul-24	103	Submit/Review/Approval Commissioning Plan and Procedures - SDT																														
SUBM-1060	Submit/Review/Approval Commissioning Plan and Procedures - Biogas system	120	22-Mar-24	19-Jul-24	759	Submit/Review/Approval Commissioning Plan and Procedures - Biogas system																														
Material Submission, Procurement, Manufacturing and Delivery																																				
Inlet Works																																				
PRE-290	Submit/Procure/Manufacture/Deliver New Inlet Works Equip. - Grit Trap and classifier	270	18-Feb-22 A	27-Jul-24	-233	Submit/Procure/Manufacture/Deliver New Inlet Works Equip. - Grit Trap and classifier																														
PRE-280	Submit/Procure/Manufacture/Deliver New Inlet Works Equip. - Conveyor and compactor	270	12-Apr-22 A	30-Apr-24	-134	Submit/Procure/Manufacture/Deliver New Inlet Works Equip. - Conveyor and compactor																														
PRE-330	Submit/Procure/Manufacture/Deliver New Inlet Works Equip. - DOU-01	330	26-May-22 A	4-Feb-24	-64	Submit/Procure/Manufacture/Deliver New Inlet Works Equip. - DOU-01																														
PRE-300	Submit/Procure/Manufacture/Deliver New Inlet Works Equip. - LALG	270	28-Jul-22 A	30-Apr-24	-187	Submit/Procure/Manufacture/Deliver New Inlet Works Equip. - LALG																														
PRE-310	Submit/Procure/Manufacture/Deliver New Inlet Works Equip. - Penstocks and stoplogs	270	13-Sep-22 A	29-Feb-24	-134	Submit/Procure/Manufacture/Deliver New Inlet Works Equip. - Penstocks and stoplogs																														
PRE-320	Submit/Procure/Manufacture/Deliver New Inlet Works Equip. - MVAC-Ventilation Fan	211	10-Jan-23 A	13-Jun-24	-226	Submit/Procure/Manufacture/Deliver New Inlet Works Equip. - MVAC-Ventilation Fan																														
Primary Sedimentation Tanks																																				
PRE-340	Submit/Procure/Manufacture/Deliver New Primary Sedimentation Tank Equip. - Bottom scrapper	255	8-Sep-22 A	1-Feb-24	-192	Submit/Procure/Manufacture/Deliver New Primary Sedimentation Tank Equip. - Bottom scrapper																														
PRE-350	Submit/Procure/Manufacture/Deliver New Primary Sedimentation Tank Equip. - IPS air scouring blower	255	27-Sep-22 A	1-Feb-24	-193	Submit/Procure/Manufacture/Deliver New Primary Sedimentation Tank Equip. - IPS air scouring blower																														
PRE-360	Submit/Procure/Manufacture/Deliver New Primary Sedimentation Tank Equip. - Scum pump and skimmer	255	29-Sep-22 A	19-Feb-24	-21	Submit/Procure/Manufacture/Deliver New Primary Sedimentation Tank Equip. - Scum pump and skimmer																														
PRE-370	Submit/Procure/Manufacture/Deliver New Primary Sedimentation Tank Equip. - Primary sludge pump and grinder	255	29-Sep-22 A	19-Feb-24	-21	Submit/Procure/Manufacture/Deliver New Primary Sedimentation Tank Equip. - Primary sludge pump and grinder																														
PRE-400	Submit/Procure/Manufacture/Deliver New Primary Sedimentation Tank Equip. - Pipeworks and valves	194	15-Oct-22 A	4-Mar-24	-201	Submit/Procure/Manufacture/Deliver New Primary Sedimentation Tank Equip. - Pipeworks and valves																														
Biogas Holder																																				
PRE-410	Submit/Procure/Manufacture/Deliver Waster Gas Burner	300	19-Aug-21 A	3-Nov-26	-119	Submit/Procure/Manufacture/Deliver Waster Gas Burner																														
PRE-420	Submit/Procure/Manufacture/Deliver H2S Removal System	510	25-Feb-22 A	30-Sep-25	-34	Submit/Procure/Manufacture/Deliver H2S Removal System																														
PRE-430	Submit/Procure/Manufacture/Deliver Biogas booster and transfer pumps	522	27-Apr-24*	30-Sep-25	63	Submit/Procure/Manufacture/Deliver Biogas booster and transfer pumps																														



- █ Remaining Level of Effort
- █ Actual Work
- █ Remaining Work
- █ Critical Remaining Work
- ◆ Milestone

Contract DC/2019/10 - YLEPP - Main Works for Stage 1

Monthly Progress Report No. 39- 3MRP (Jan 24)

Project ID : DWPr34_240209
 Layout : DC201910 MPR39-3MRP
 Page 3 of 11

Monthly Progress Report - 3MRP

Date	Revision	Checked	Approved
31-Jan-24	Rev. 0		

Activity ID	Activity Name	Orig Dur	Early Start	Early Finish	Total Float	January 39					February 40					March 41					April 42					May 43					June 44					July 45	
						31	07	14	21	28	04	11	18	25	03	10	17	24	31	07	14	21	28	05	12	19	26	02	09	16	23	30	07				
Sludge Digester Tank																																					
PRE-750	Submit/Procure/Manufacture/Deliver Sludge Digester Tank - Flame Arresters	100	31-Oct-22 A	4-Oct-24	-173																																
PRE-780	Submit/Procure/Manufacture/Deliver Sludge Digester Tank - Mixing System and Heat Exchanger for Sludge Anaerobic Digester	420	22-Dec-22 A	1-Apr-24	13	Submit/Procure/Manufacture/Deliver Sludge Digester Tank - Mixing System and Heat Exchanger for Sludge Anaerobic Digester																															
PRE-720	Submit/Procure/Manufacture/Deliver Sludge Digester Tank - Inspection Windows for Sludge Anaerobic System	365	18-Jan-23 A	31-Mar-24	14	Submit/Procure/Manufacture/Deliver Sludge Digester Tank - Inspection Windows for Sludge Anaerobic System																															
PRE-730	Submit/Procure/Manufacture/Deliver Sludge Digester Tank - Gas Take Off Dome for Sludge Anaerobic Digestion System	365	18-Jan-23 A	4-Oct-24	-173																																
PRE-710	Submit/Procure/Manufacture/Deliver Sludge Digester Tank - Pressure and Vacuum Relief Valves	300	1-Mar-23 A	3-Feb-24	-192	Submit/Procure/Manufacture/Deliver Sludge Digester Tank - Pressure and Vacuum Relief Valves																															
PRE-740	Submit/Procure/Manufacture/Deliver Sludge Digester Tank - Telescopic Valve for Sludge Anaerobic Digestion System	179	10-Jul-23 A	1-Aug-24	-192																																
PRE-760	Submit/Procure/Manufacture/Deliver Sludge Digester Tank - Ferric Chloride Dosing Pump	148	29-Aug-23 A	25-Jan-25	-192																																
PRE-770	Submit/Procure/Manufacture/Deliver Sludge Digester Tank - Ferric Chloride Transfer Pump	148	29-Aug-23 A	23-Oct-24	-192																																
Sludge Thickening Building																																					
PRE-250	Submit/Procure/Manufacture/Deliver Sludge Thickening System - Thickening Centrifuges	360	12-Nov-21 A	30-Apr-24	281	Submit/Procure/Manufacture/Deliver Sludge Thickening System - Thickening Centrifuges																															
PRE-500	Submit/Procure/Manufacture/Deliver Sludge Thickening System - Pump and Jet Mixer	300	7-Jan-22 A	26-Jul-24	31																																
PRE-510	Submit/Procure/Manufacture/Deliver Sludge Thickening System - LALG	256	28-Mar-23 A	29-Jun-24	151																																
PRE-480	Submit/Procure/Manufacture/Deliver Sludge Thickening System - Polymer preparation system	388	12-Apr-23 A	29-Jun-24	187																																
PRE-490	Submit/Procure/Manufacture/Deliver Sludge Thickening System - DOU-03	264	7-Jul-23 A	7-Sep-24	151																																
PRE-520	Submit/Procure/Manufacture/Deliver Sludge Thickening System - MVAC	240	1-Feb-24	27-Sep-24	131																																
Mainstream Bio-Reactor																																					
PRE-230	Submit/Procure/Manufacture/Deliver Main Stream Bio-Reactor E&M Equip. - AGSS system	480	9-Sep-22 A	20-Mar-25	-207																																
PRE-530	Submit/Procure/Manufacture/Deliver Main Stream Bio-Reactor E&M Equip. - Penstocks and stoplogs	345	31-Oct-22 A	24-Jun-25	-176																																
PRE-550	Submit/Procure/Manufacture/Deliver Main Stream Bio-Reactor E&M Equip. - Sludge pre-thickening system	510	31-Oct-22 A	8-Jan-25	-69																																
PRE-540	Submit/Procure/Manufacture/Deliver Main Stream Bio-Reactor E&M Equip. - Chemical storage and dosing system	270	18-Nov-22 A	8-Jan-25	-136																																
PRE-570	Submit/Procure/Manufacture/Deliver Main Stream Bio-Reactor E&M Equip. - Instrumentation	505	1-Feb-24	19-Jun-25	-191																																
PRE-580	Submit/Procure/Manufacture/Deliver Main Stream Bio-Reactor E&M Equip. - MVAC	241	1-Feb-24	28-Sep-24	-34																																
PRE-560	Submit/Procure/Manufacture/Deliver Main Stream Bio-Reactor E&M Equip. - LALG	412	3-Feb-24*	20-Mar-25	-207																																
Tertiary Treatment System																																					
PRE-610	Submit/Procure/Manufacture/Deliver TTS Equip. - Pumping system	495	19-Jul-22 A	8-Jan-25	-59																																
PRE-600	Submit/Procure/Manufacture/Deliver TTS Equip. - UV disinfection system	510	8-Sep-22 A	8-Jan-25	-59																																
PRE-240	Submit/Procure/Manufacture/Deliver TTS Equip. - Disc Filter	600	27-Sep-22 A	8-Jan-25	-59																																
PRE-590	Submit/Procure/Manufacture/Deliver TTS Equip. - Chemical cleaning system	480	18-Nov-22 A	8-Jan-25	-59																																
PRE-630	Submit/Procure/Manufacture/Deliver TTS Equip. - Penstocks and stoplogs	435	30-Nov-22 A	8-Jan-25	-59																																
PRE-620	Submit/Procure/Manufacture/Deliver TTS Equip. - LALG	151	27-Mar-23 A	8-Jan-25	-59																																
PRE-690	Submit/Procure/Manufacture/Deliver TTS Equip. - DOU-02	506	7-Sep-23 A	26-Mar-25	-136																																
Electrical and Control System																																					
PRE-680	Submit/Procure/Manufacture/Deliver Electrical and Control System - SCADA and instrumentation	420	30-Apr-22 A	19-Mar-24	3	Submit/Procure/Manufacture/Deliver Electrical and Control System - SCADA and instrumentation																															
PRE-640	Submit/Procure/Manufacture/Deliver Electrical and Control System - HVSB and Tx	283	21-Dec-22 A	3-Feb-24	-59	Submit/Procure/Manufacture/Deliver Electrical and Control System - HVSB and Tx																															
PRE-650	Submit/Procure/Manufacture/Deliver Electrical and Control System - LVSB	300	21-Dec-22 A	1-Feb-24	-136	Submit/Procure/Manufacture/Deliver Electrical and Control System - LVSB																															
PRE-660	Submit/Procure/Manufacture/Deliver Electrical and Control System - UPS	300	21-Dec-22 A	7-Feb-24	-92	Submit/Procure/Manufacture/Deliver Electrical and Control System - UPS																															
PRE-670	Submit/Procure/Manufacture/Deliver Electrical and Control System - Armoured Cable	203	21-Dec-22 A	5-Mar-24	-28	Submit/Procure/Manufacture/Deliver Electrical and Control System - Armoured Cable																															
Statutory Submission & Approval																																					
FSI, FSD and OP Requirements																																					
FSI Submission & Approval																																					
FSD-1210	Submission/Review/Approval by PM and FSD - Full GBP+GBP for TOP1 with DG- RIC & 4th submission	120	29-Dec-23 A	30-May-24	-212	Submission/Review/Approval by PM and FSD - Full GBP+GBP for TOP1																															
WSD Submission & Approval																																					
WSD-1010	WSD - Form WWO542 PM&WSD review and approval	90	10-Mar-22 A	29-Mar-24	-217	WSD - Form WWO542 PM&WSD review and approval																															
WSD-1020	WSD - Submit Form WWO46 Part 1 and 2	0		29-Mar-24	-217	WSD - Submit Form WWO46 Part 1 and 2																															
WSD-1030	WSD - Form WWO46 Part 1 and 2 PM&WSD review and approval	90	30-Mar-24	27-Jun-24	-217	WSD - Form WWO46 Part 1 and 2																															
EMSD Submission & Approval																																					
Biogas System (ATAL)																																					
Phase 1																																					
ATAL-FS-020	Form 105 for Biogas Holder Tank 1 (Submission and Approval Period)	184	8-Nov-22 A	5-Apr-24	13	Form 105 for Biogas Holder Tank 1 (Submission and Approval Period)																															
EPD Submission & Approval for VEP																																					
EPD-1000	EPD - VEP Review, prepare and submit to PM	60	24-May-23 A	10-Feb-24	115	EPD - VEP Review, prepare and submit to PM																															
EPD-1010	EPD - VEP RIC to PM and approval	7	11-Feb-24	17-Feb-24	115	EPD - VEP RIC to PM and approval																															
EPD-1050	EPD - VEP consultation with HKBW	28	11-Feb-24	9-Mar-24	129	EPD - VEP consultation with HKBW																															
EPD-1020	EPD - VEP Submission to DSD and EPD	28	18-Feb-24	16-Mar-24	115	EPD - VEP Submission to DSD and EPD																															
EPD-1030	EPD - VEP RIC to DSD and EPD	7	17-Mar-24	23-Mar-24	115	EPD - VEP RIC to DSD and EPD																															
EPD-1060	EPD - VEP Gazette	28	24-Mar-24	20-Apr-24	115	EPD - VEP Gazette																															
EPD-1070	EPD - VEP approval	7	21-Apr-24	27-Apr-24	115	EPD - VEP approval																															
Zone 1 Construction																																					
CLP Substations No. 1 & 2																																					
CLP Substation No. 1 & 2 Handover Inspection and Installation																																					
CLP-1070	CLP Substation No.1 - CLP Installation (additional works due to CLP comment)	60	1-Nov-23 A	29-Feb-24	-67	CLP Substation No.1 - CLP Installation (additional works due to CLP comment)																															
CLP-1080	CLP Substation No.2 - CLP Installation (additional works due to CLP comment)	60	1-Nov-23 A	29-Feb-24	-67	CLP Substation No.2 - CLP Installation (additional works due to CLP comment)																															
CLP-1090	CLP Substation No.1 - Energization	0		29-Feb-24	-67	CLP Substation No.1 - Energization																															
CLP-1100	CLP Substation No.2 - Energization	0		29-Feb-24	-67	CLP Substation No.2 - Energization																															
DSD 11kV Switchgear																																					
CLP-1060	DSD 11kV Switchgear - internal ABWF Works	36	25-Feb-23 A	29-Feb-24	-67	DSD 11kV Switchgear - internal ABWF Works																															
CLP-1110	DSD 11kV Switchgear - E&M and BS Installation	51	18-Jul-23 A	20-Feb-24	-67	DSD 11kV Switchgear - E&M and BS Installation																															
CLP-1220	DSD 11kV Switchgear - Energization	8	21-Feb-24	29-Feb-24	-67	DSD 11kV Switchgear - Energization																															
CLP Substation No. 1 & 2 & DSD 11kV Switchgear - GRC Cladding																																					
CLP-1620	CLP Substation No.1 & 2 & DSD 11kV Switchgear - GRC cladding - mock-up inspection and approval	1	14-Sep-23 A	1-Feb-24	554	CLP Substation No.1 & 2 & DSD 11kV Switchgear - GRC cladding - mock-up inspection and approval																															



- Remaining Level of Effort
- Actual Work
- Remaining Work
- Critical Remaining Work
- ◆ Milestone

Contract DC/2019/10 - YLEPP - Main Works for Stage 1

Monthly Progress Report No. 39- 3MRP (Jan 24)

Project ID : DWPr34_240209
 Layout : DC201910 MPR39-3MRP
 Page 4 of 11

Monthly Progress Report - 3MRP			
Date	Revision	Checked	Approved
31-Jan-24	Rev. 0		

Activity ID	Activity Name	Orig Dur	Early Start	Early Finish	Total Float	January 39					February 40					March 41					April 42					May 43					June 44					July 45
						31	07	14	21	28	04	11	18	25	03	10	17	24	31	07	14	21	28	05	12	19	26	02	09	16	23	30	07			
CLP-1590	CLP Substation No.1 & 2 & DSD11KV Switchgear - GRC cladding - fabrication	60	2-Feb-24	19-Apr-24	554	CLP Substation No.1 & 2 & DSD11KV Switchgear - GRC cladding - fabrication																														
CLP-1600	CLP Substation No.1 & 2 & DSD11KV Switchgear - GRC cladding - installation	75	17-Feb-24	21-May-24	554	CLP Substation No.1 & 2 & DSD11KV Switchgear - GRC cladding - installation																														
Modification of Existing Emergency Bypass Chamber																																				
Emergency Bypass Chamber - Foundation and ELS																																				
IW-3200	IW - Modification of Existing Emergency Bypass Chamber - Site clearance and mobilization of sheetpile	3	19-Feb-24*	21-Feb-24	-195	IW - Modification of Existing Emergency Bypass Chamber - Site clearance and mobilization of sheetpile																														
IW-1260	IW - Modification of Existing Emergency Bypass Chamber - Sheet Piles Installation (1.283m2,60m2/day,rig)	21	22-Feb-24	16-Mar-24	-195	IW - Modification of Existing Emergency Bypass Chamber - Sheet Piles Installation (1.283m2,60m2/day,rig)																														
IW-3190	IW - Modification of Existing Emergency Bypass Chamber - Pumping test	5	17-Mar-24	21-Mar-24	-238	IW - Modification of Existing Emergency Bypass Chamber - Pumping test																														
IW-1270	IW - Modification of Existing Emergency Bypass Chamber - Excavation: 1st layer +4.5 to +3.5mPD (253m3)	6	22-Mar-24	28-Mar-24	-195	IW - Modification of Existing Emergency Bypass Chamber - Excavation: 1st layer +4.5 to +3.5mPD (253m3)																														
IW-3070	IW - Modification of Existing Emergency Bypass Chamber - Strut installation @ +4.0mPD	6	2-Apr-24	9-Apr-24	-195	IW - Modification of Existing Emergency Bypass Chamber - Strut installation @ +4.0mPD																														
IW-3080	IW - Modification of Existing Emergency Bypass Chamber - Excavation: 2nd layer +3.5 to +1.0mPD (633m3)	8	10-Apr-24	18-Apr-24	-195	IW - Modification of Existing Emergency Bypass Chamber - Excavation: 2nd layer +3.5 to +1.0mPD (633m3)																														
IW-3090	IW - Modification of Existing Emergency Bypass Chamber - Strut installation @ +1.5mPD	8	19-Apr-24	27-Apr-24	-195	IW - Modification of Existing Emergency Bypass Chamber - Strut installation @ +1.5mPD																														
IW-3340	IW - Modification of Existing Emergency Bypass Chamber - Excavation: 3rd layer +1.0 to -2.0mPD (759m3)	6	29-Apr-24	6-May-24	-195	IW - Modification of Existing Emergency Bypass Chamber - Excavation: 3rd layer +1.0 to -2.0mPD (759m3)																														
Emergency Bypass Chamber - Pipe laying																																				
IW-3100	IW - Modification of Existing Emergency Bypass Chamber - Excavation: FEL +1.0 to -0.9mPD (481 m3)	8	29-Apr-24	8-May-24	-123	IW - Modification of Existing Emergency Bypass Chamber - Excavation: FEL +1.0 to -0.9mPD (481 m3)																														
Modification of Existing Inspection Chamber & Inlet Effluent Pipes from NSWSPS																																				
IW-1310	Modification of Existing Inspection Chamber - Sheet Piles Installation (1,020m2,40m2/day,rig, 1 rig)	21	27-Apr-24	23-May-24	-190	Modification of Existing Inspection Chamber - Sheet Piles Installation (1,020m2,40m2/day,rig, 1 rig)																														
Inlet Works (IW)																																				
IW Foundation & ELS Works																																				
IW Basement																																				
IW Excavation Works & ELS																																				
IW Base Slab																																				
Z1-IW-6090	IW - Zone A - Pile Cap @ -4.95mPD (1st pour)	12	14-Dec-23 A	9-Jan-24 A		IW - Zone A - Pile Cap @ -4.95mPD (1st pour)																														
Z1-IW-6100	IW - Zone A - Pile Cap @ -5.90/-4.95/-3.95/-0.55mPD (2nd pour)	12	10-Jan-24 A	27-Jan-24 A		IW - Zone A - Pile Cap @ -5.90/-4.95/-3.95/-0.55mPD (2nd pour)																														
Z1-IW-6710	IW - Zone D - Strutting: Remove knee strut of S3 strut (MS2-3)	3	22-Jan-24 A	27-Jan-24 A		IW - Zone D - Strutting: Remove knee strut of S3 strut (MS2-3)																														
Z1-IW-6830	IW - Zone D - Break mass concrete and blinding for Pile Cap @ -1.65 (GL4-5 upper portion)	6	27-Jan-24 A	1-Feb-24	-135	IW - Zone D - Break mass concrete and blinding for Pile Cap @ -1.65 (GL4-5 upper portion)																														
Z1-IW-6660	IW - Zone A - Remove strut S4 and remaining S3	6	31-Jan-24 A	3-Feb-24	-217	IW - Zone A - Remove strut S4 and remaining S3																														
Z1-IW-6620	IW - Zone D - Pile Cap @ -1.65 (GL4-5 upper portion) *OT	6	2-Feb-24	8-Feb-24	-135	IW - Zone D - Pile Cap @ -1.65 (GL4-5 upper portion) *OT																														
Z1-IW-6350	IW - Zone A - Pile Cap @ -4.90/-1.60/-0.55mPD (3rd pour)	8	5-Feb-24	16-Feb-24	-217	IW - Zone A - Pile Cap @ -4.90/-1.60/-0.55mPD (3rd pour)																														
Z1-IW-6360	IW - Zone A - Pile Cap @ -1.60/-0.05mPD (4th pour)	10	17-Feb-24	28-Feb-24	-217	IW - Zone A - Pile Cap @ -1.60/-0.05mPD (4th pour)																														
Z1-IW-6820	IW - Zone A - Pile Cap @ -0.55mPD (5th pour)	10	29-Feb-24	11-Mar-24	-217	IW - Zone A - Pile Cap @ -0.55mPD (5th pour)																														
IW Basement RC Works																																				
IW Zone C																																				
Z1-IW-6720	IW(C) - Zone C3 - Strutting: Remove S1 & S2 strut (MS3-1 & MS3-2) at GL4	3	7-Feb-24	9-Feb-24	-122	IW(C) - Zone C3 - Strutting: Remove S1 & S2 strut (MS3-1 & MS3-2) at GL4																														
Z1-IW-6730	IW(C) - Zone C3 - Wall & Column, GF Slab of Falseworks, Formworks and RC Works (+6.00 mPD)	9	14-Feb-24	23-Feb-24	-122	IW(C) - Zone C3 - Wall & Column, GF Slab of Falseworks, Formworks and RC Works (+6.00 mPD)																														
IW Zone D early for PST early commissioning*																																				
Z1-IW-6450	IW(D) - Wall Erection of Formworks and RC Works (-1.6 to +4.95mPD) *OT	4	9-Feb-24	16-Feb-24	-135	IW(D) - Wall Erection of Formworks and RC Works (-1.6 to +4.95mPD) *OT																														
IW Zone AD																																				
Z1-IW-6240	IW(AD) - Remove S1 (after road lowering to +4mPD)	4	1-Feb-24	5-Feb-24	-182	IW(AD) - Remove S1 (after road lowering to +4mPD)																														
Z1-IW-6230	IW(AD) - Wall Erection of Formworks and RC Works (-0.55 to +3.5 mPD) with S2 cast-in	8	12-Mar-24	20-Mar-24	-217	IW(AD) - Wall Erection of Formworks and RC Works (-0.55 to +3.5 mPD) with S2 cast-in																														
Z1-IW-6250	IW(AD) - GF Slab of Falseworks, Formworks and RC Works (+3.95/+4.95 mPD)	12	21-Mar-24	8-Apr-24	-217	IW(AD) - GF Slab of Falseworks, Formworks and RC Works (+3.95/+4.95 mPD)																														
Z1-IW-6460	IW(D) - GF Slab of Falseworks, Formworks and RC Works (+3.95/+4.95 mPD) after S1 remove	12	21-Mar-24	8-Apr-24	-217	IW(D) - GF Slab of Falseworks, Formworks and RC Works (+3.95/+4.95 mPD) after S1 remove																														
Z1-IW-6770	IW(AD) - Remove formwork, concrete defectworks	8	9-Apr-24	17-Apr-24	-190	IW(AD) - Remove formwork, concrete defectworks																														
Z1-IW-6780	IW(AD) - Wall proof, remove S2 and concrete backfill	8	18-Apr-24	26-Apr-24	-190	IW(AD) - Wall proof, remove S2 and concrete backfill																														
Water Tightness Test for IW Basement																																				
Z1-IW-6550	IWB - Concrete develop strength (IW Zone A +4.95 slab)	7	9-Apr-24	16-Apr-24	-215	IWB - Concrete develop strength (IW Zone A +4.95 slab)																														
Z1-IW-6560	IWB - Strike formwork and make good for water tightness test	7	17-Apr-24	24-Apr-24	-215	IWB - Strike formwork and make good for water tightness test																														
Z1-IW-6260	IWB - Remove falsework and backprops	4	20-Apr-24	24-Apr-24	-213	IWB - Remove falsework and backprops																														
Z1-IW-4100	IWB - Water Tightness Test Phase 1	18	25-Apr-24	17-May-24	-215	IWB - Water Tightness Test Phase 1																														
IW Civil and Structural Works																																				
IW Superstructure																																				
RC Works																																				
Zone C																																				
Zone C1																																				
Z1-IW-4220	IWS(C) - Zone C1 - Column Erection of Formworks and RC Works (+18.2mPD)	8	30-Nov-23 A	30-Dec-23 A		IWS(C) - Zone C1 - Column Erection of Formworks and RC Works (+18.2mPD)																														
Z1-IW-4230	IWS(C) - Zone C1 - Wall (+11.8 to +18.2) & Roof Slab of Falseworks, Formworks and RC Works (+18.2mPD)	10	30-Nov-23 A	30-Dec-23 A		IWS(C) - Zone C1 - Wall (+11.8 to +18.2) & Roof Slab of Falseworks, Formworks and RC Works (+18.2mPD)																														
Zone C2																																				
Z1-IW-6690	IWS(C) - Zone C2 - Remove external falsework (+6 to +18.2mPD) at Zone C2	3	25-Dec-23 A	3-Jan-24 A		IWS(C) - Zone C2 - Remove external falsework (+6 to +18.2mPD) at Zone C2																														
Zone C3																																				
Z1-IW-6740	IWS(C) - Zone C3 - Wall & Column (+6 to +11.8) & 1/F Slab of Falseworks, Formworks and RC Works (+11.8mPD)	8	24-Feb-24	4-Mar-24	-122	IWS(C) - Zone C3 - Wall & Column (+6 to +11.8) & 1/F Slab of Falseworks, Formworks and RC Works (+11.8mPD)																														
Z1-IW-6750	IWS(C) - Zone C3 - Wall & Column (+11.8 to +18.2) & Roof Slab of Falseworks, Formworks and RC Works (+18.2mPD)	8	5-Mar-24	13-Mar-24	-122	IWS(C) - Zone C3 - Wall & Column (+11.8 to +18.2) & Roof Slab of Falseworks, Formworks and RC Works (+18.2mPD)																														
Zone D																																				
Z1-IW-6520	IWS(D) - Wall Erection of Formworks and RC Works (+7.84/+8.2mPD) *OT	4	17-Feb-24	21-Feb-24	-135	IWS(D) - Wall Erection of Formworks and RC Works (+7.84/+8.2mPD) *OT																														
Z1-IW-6490	IWS(D) - Intermediate Slab of Falseworks, Formworks and RC Works (+7.84/+8.2mPD)	8	22-Feb-24	1-Mar-24	-135	IWS(D) - Intermediate Slab of Falseworks, Formworks and RC Works (+7.84/+8.2mPD)																														
Z1-IW-6500	IWS(D) - Wall Erection of Formworks and RC Works (+11.8mPD) *OT	4	2-Mar-24	6-Mar-24	-135	IWS(D) - Wall Erection of Formworks and RC Works (+11.8mPD) *OT																														
Z1-IW-6510	IWS(D) - Wall Erection of Formworks and RC Works (+18.2mPD) *OT	4	7-Mar-24	11-Mar-24	-135	IWS(D) - Wall Erection of Formworks and RC Works (+18.2mPD) *OT																														
Z1-IW-6540	IWS(D) - Roof Slab of Falseworks, Formworks and RC Works (+18.2mPD)	8	12-Mar-24	20-Mar-24	-135	IWS(D) - Roof Slab of Falseworks, Formworks and RC Works (+18.2mPD)																														
Zone A																																				
Z1-IW-4145	IWS(A) - Wall Erection of Formworks and RC Works (+7.84/+8.2mPD)	8	9-Apr-24	17-Apr-24	-217	IWS(A) - Wall Erection of Formworks and RC Works (+7.84/+8.2mPD)																														
Z1-IW-4090	IWS(A) - Intermediate Slab of Falseworks, Formworks and RC Works (+7.84/+8.2mPD)	14	18-Apr-24	4-May-24	-217	IWS(A) - Intermediate Slab of Falseworks, Formworks and RC Works (+7.84/+8.2mPD)																														
IW ABWF Works																																				
IW ABWF Works 1st fix for E&M handover																																				
IW ABWF Works - Zone A/D																																				



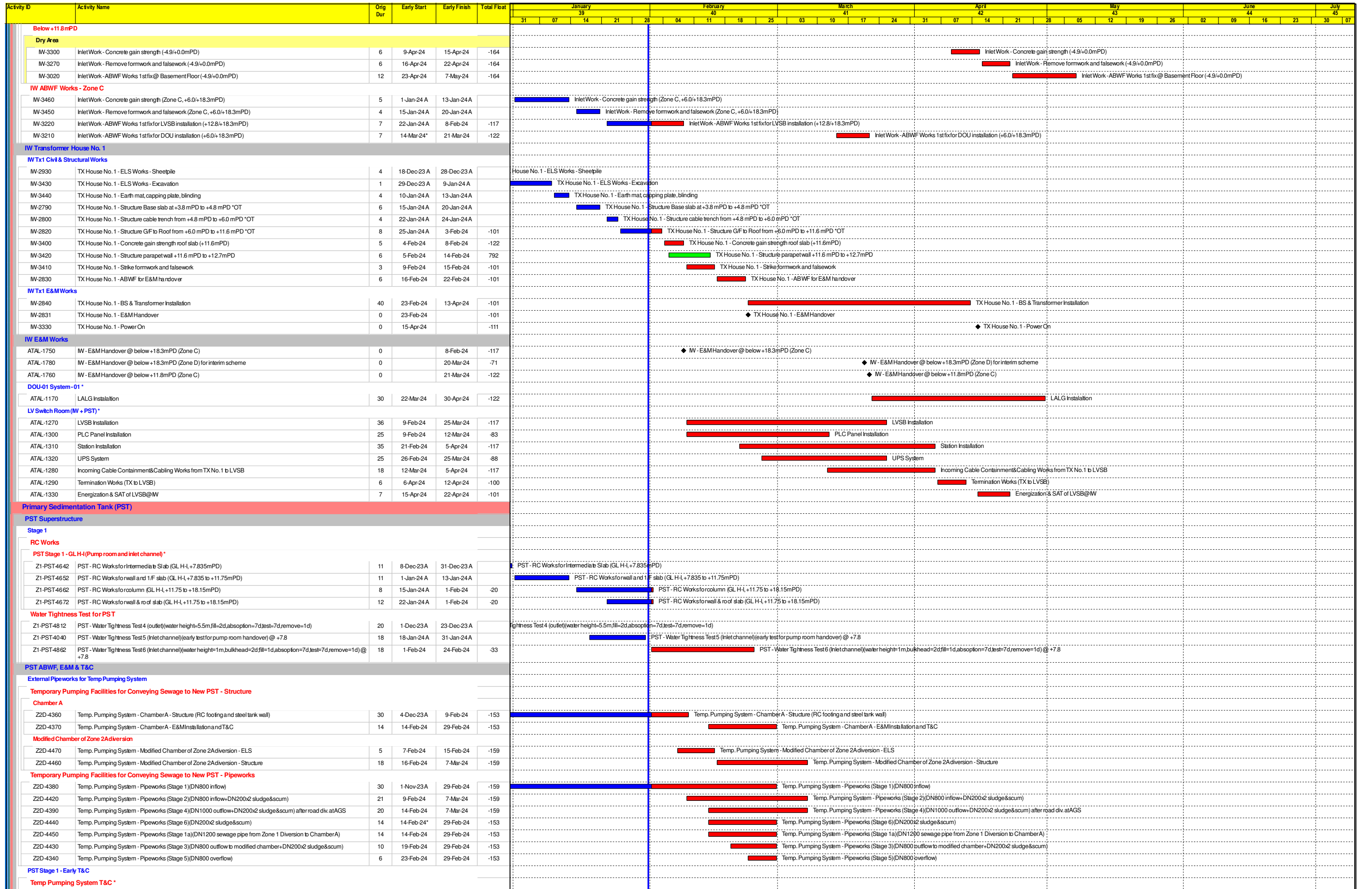
- Remaining Level of Effort
- Actual Work
- Remaining Work
- Critical Remaining Work
- ◆ Milestone

Contract DC/2019/10 - YLEPP - Main Works for Stage 1

Monthly Progress Report No. 39- 3MRP (Jan 24)

Project ID : DWPr34_240209
 Layout : DC201910 MPR39-3MRP
 Page 5 of 11

Monthly Progress Report - 3MRP			
Date	Revision	Checked	Approved
31-Jan-24	Rev. 0		



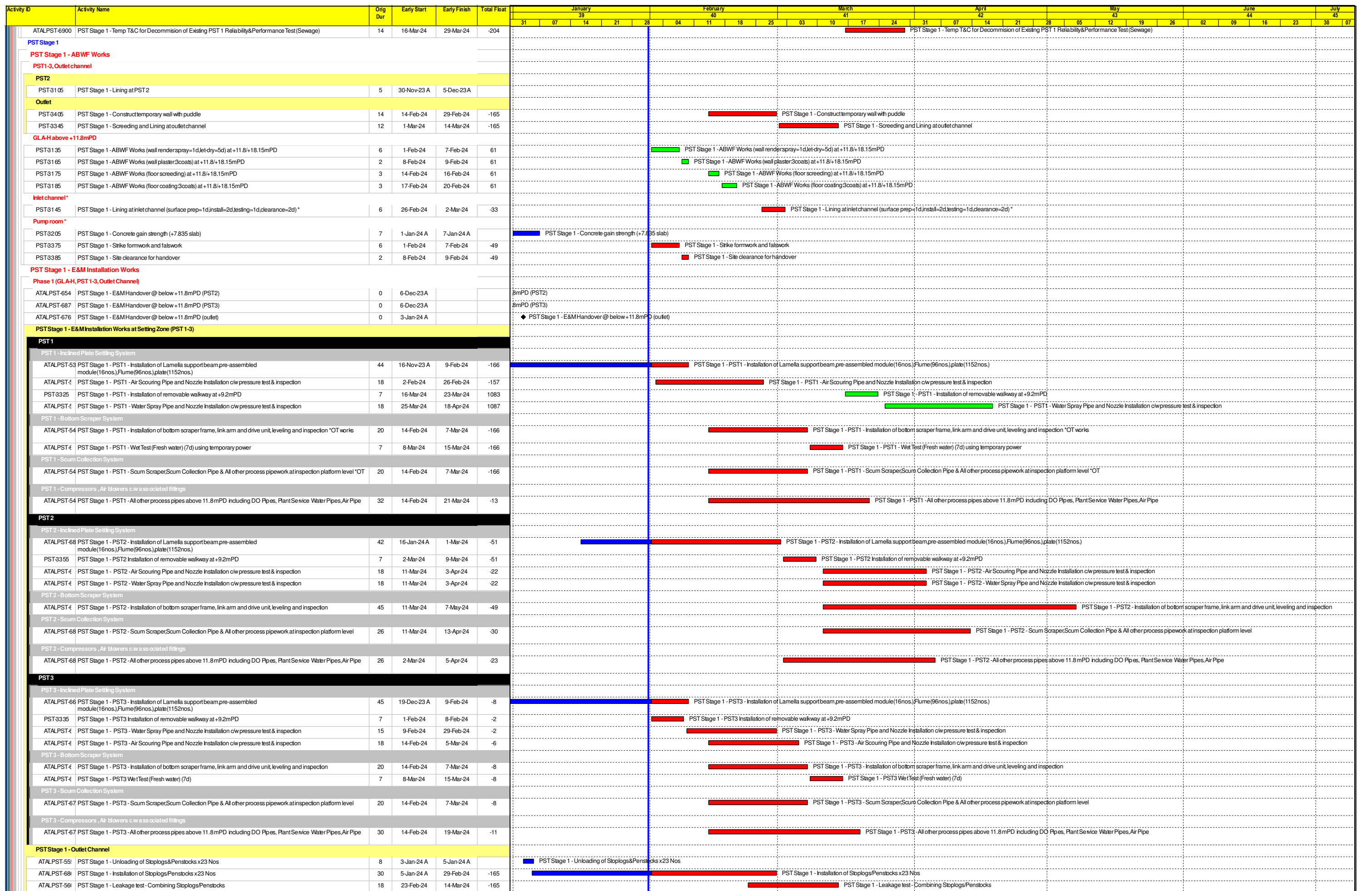
- Remaining Level of Effort
- Actual Work
- Remaining Work
- Critical Remaining Work
- ◆ Milestone

Contract DC/2019/10 - YLEPP - Main Works for Stage 1
Monthly Progress Report No. 39- 3MRP (Jan 24)

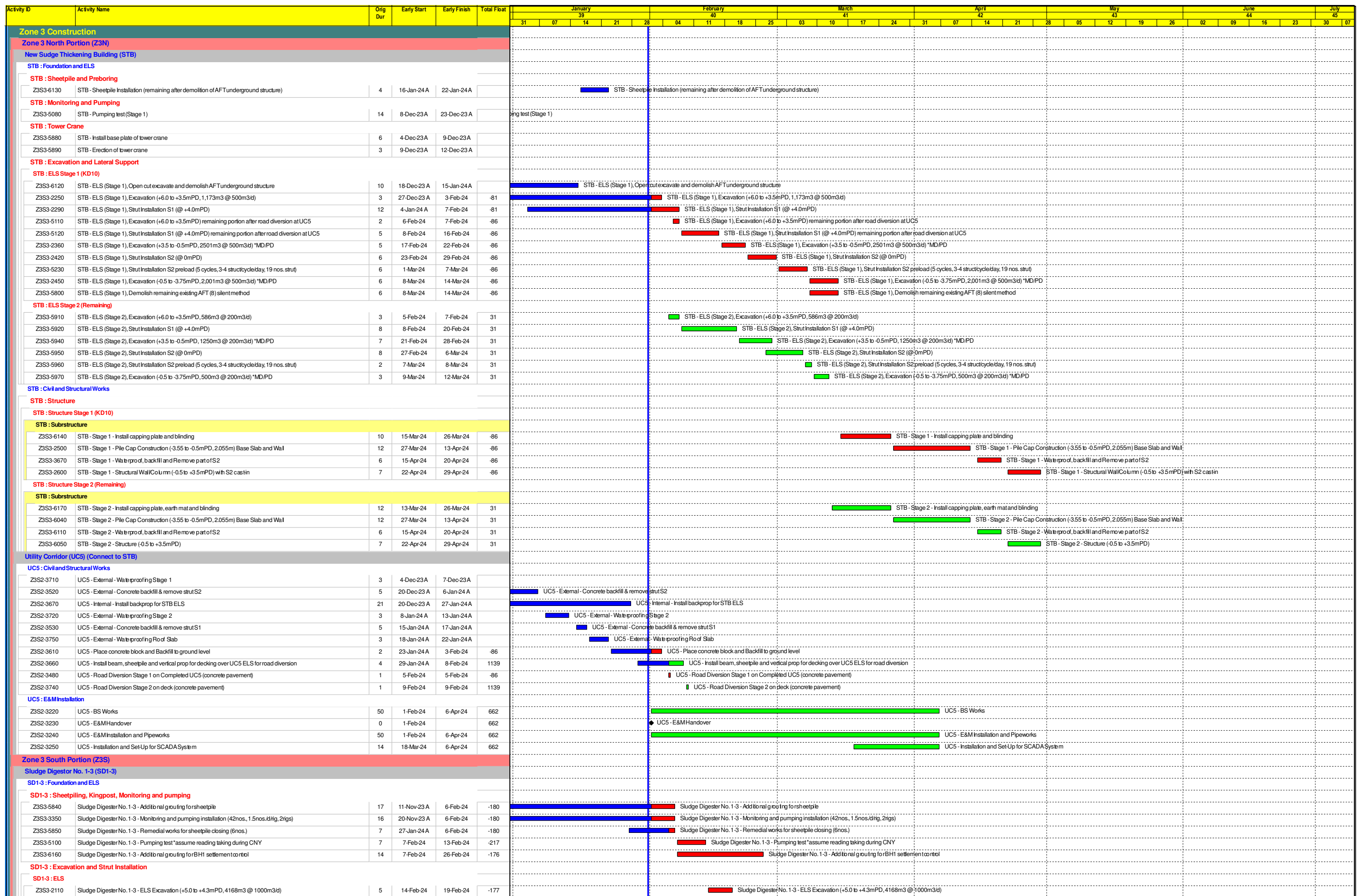
Project ID : DWPr34_240209
 Layout : DC201910 MPR39-3MRP
 Page 6 of 11


Monthly Progress Report - 3MRP

Date	Revision	Checked	Approved
31-Jan-24	Rev. 0		



Date	Revision	Checked	Approved
31-Jan-24	Rev. 0		



Paul Y 
保華-中國中鐵聯營體
PAUL Y.-CREC JOINT VENTURE

Legend:

- Remaining Level of Effort
- Actual Work
- Remaining Work
- Critical Remaining Work
- Milestone

Contract DC/2019/10 - YLEPP - Main Works for Stage 1

Monthly Progress Report No. 39- 3MRP (Jan 24)

Project ID : DWPr34_240209
Layout : DC201910 MPR39-3MRP
Page 10 of 11

Monthly Progress Report - 3MRP			
Date	Revision	Checked	Approved
31-Jan-24	Rev. 0		

Activity ID	Activity Name	Orig Dur	Early Start	Early Finish	Total Float	January							February							March							April							May							June							July						
						31	07	14	21	28	04	11	18	25	03	10	17	24	31	07	14	21	28	05	12	19	26	02	09	16	23	30	07																					
Z3S3-2140	Sludge Digester No. 1-3 - Strut Installation S1 (+4.8mPD)	7	20-Feb-24	27-Feb-24	-177	Sludge Digester No. 1-3 - Strut Installation S1 (+4.8mPD)																																																
Z3S3-2150	Sludge Digester No. 1-3 - ELS Excavation (+4.3 to +1.8mPD, 6130m3 @ 1000m3/d)	6	28-Feb-24	5-Mar-24	-177	Sludge Digester No. 1-3 - ELS Excavation (+4.3 to +1.8mPD, 6130m3 @ 1000m3/d)																																																
Z3S3-2190	Sludge Digester No. 1-3 - Strut Installation S2 (+2.3mPD)	7	2-Mar-24	9-Mar-24	-177	Sludge Digester No. 1-3 - Strut Installation S2 (+2.3mPD)																																																
Z3S3-5730	Sludge Digester No. 1-3 - Preloading Strut S2 (+2.3mPD)(4 cycle, 5 struts/cycle/day, 16 struts)	4	11-Mar-24	14-Mar-24	-177	Sludge Digester No. 1-3 - Preloading Strut S2 (+2.3mPD)(4 cycle, 5 struts/cycle/day, 16 struts)																																																
Z3S3-2200	Sludge Digester No. 1-3 - ELS Excavation (+1.8 to -0.7mPD, 6130m3 @ 1000m3/d) *MD	6	15-Mar-24	21-Mar-24	-177	Sludge Digester No. 1-3 - ELS Excavation (+1.8 to -0.7mPD, 6130m3 @ 1000m3/d) *MD																																																
Z3S3-2210	Sludge Digester No. 1-3 - Strut Installation S3 (-0.2mPD)	7	19-Mar-24	26-Mar-24	-177	Sludge Digester No. 1-3 - Strut Installation S3 (-0.2mPD)																																																
Z3S3-5740	Sludge Digester No. 1-3 - Preloading Strut S3 (-0.2mPD)(4 cycle, 5 struts/cycle/day, 16 struts)	4	27-Mar-24	3-Apr-24	-177	Sludge Digester No. 1-3 - Preloading Strut S3 (-0.2mPD)(4 cycle, 5 struts/cycle/day, 16 struts)																																																
Z3S3-2220	Sludge Digester No. 1-3 - ELS Excavation (-0.7 to -3.2mPD, 6130m3 @ 1000m3/d) *MD	6	5-Apr-24	11-Apr-24	-177	Sludge Digester No. 1-3 - ELS Excavation (-0.7 to -3.2mPD, 6130m3 @ 1000m3/d) *MD																																																
Z3S3-2230	Sludge Digester No. 1-3 - Strut Installation S4 (-2.7mPD)	7	9-Apr-24	16-Apr-24	-177	Sludge Digester No. 1-3 - Strut Installation S4 (-2.7mPD)																																																
Z3S3-5750	Sludge Digester No. 1-3 - Preloading Strut S4 (-2.7mPD)(4 cycle, 5 struts/cycle/day, 16 struts)	4	17-Apr-24	20-Apr-24	-177	Sludge Digester No. 1-3 - Preloading Strut S4 (-2.7mPD)(4 cycle, 5 struts/cycle/day, 16 struts)																																																
Z3S3-2240	Sludge Digester No. 1-3 - ELS Excavation (-3.2 to -5.5mPD, 5640m3 @ 1000m3/d)	6	22-Apr-24	27-Apr-24	-177	Sludge Digester No. 1-3 - ELS Excavation (-3.2 to -5.5mPD, 5640m3 @ 1000m3/d)																																																
Z3S3-3600	Sludge Digester No. 1-3 - Strut Installation S5 (-5.0mPD)	7	25-Apr-24	3-May-24	-177	Sludge Digester No. 1-3 - Strut Installation S5 (-5.0mPD)																																																
Biogas Holder No. 1 (BH1)																																																						
BH1 : Foundation																																																						
Z3BH-1360	Biogas Holder No. 1 - Backfill +2.6 to +6 for SD Excavation (300mm/layer/d)	12	9-Dec-23A	3-Feb-24	-160	Biogas Holder No. 1 - Backfill +2.6 to +6 for SD Excavation (300mm/layer/d)																																																
BH1 : E&M Installation																																																						
ATALZ3BH-2445	BH No. 1 - Top ring installation and Roof, crown ring and roof handrail construction	32	23-Dec-23 A	29-Feb-24	-98	BH No. 1 - Top ring installation and Roof, crown ring and roof handrail construction																																																
ATALZ3BH-2455	BH No. 1 - Jack installation	14	1-Mar-24	16-Mar-24	-98	BH No. 1 - Jack installation																																																
ATALZ3BH-2465	BH No. 1 - Tank wall (2nd to 3rd Ring) and tank mounting ring construction and welding	32	18-Mar-24	27-Apr-24	-98	BH No. 1 - Tank wall (2nd to 3rd Ring) and tank mounting ring construction and welding																																																
ATALZ3BH-2475	BH No. 1 - Tank wall (4th to 5th Ring) construction and welding	32	29-Apr-24	6-Jun-24	-98	BH No. 1 - Tank wall (4th to 5th Ring) construction and welding																																																
BH1 : Diversion Works																																																						
Z3S7-2060	BH No. 1 - Temporary system and associated pipeworks for switchover to new BH1 for decommission of GH2	90	22-Apr-24	8-Aug-24	-92	BH No. 1 - Temporary system and associated pipeworks for switchover to new BH1 for decommission of GH2																																																
Utility Corridor and Pipe Portal (UC/PP)																																																						
UC1 : Predrilling Works																																																						
Z3SSUC1-2180	UC/PP - Predrill UC&PP-PD2	6	1-Feb-24	7-Feb-24	-40	UC/PP - Predrill UC&PP-PD2																																																
Z3SSUC1-2200	UC/PP - Predrill UC&PP-PD6	6	8-Feb-24	17-Feb-24	-40	UC/PP - Predrill UC&PP-PD6																																																



保華-中國中鐵聯營體
PAUL Y.-CREC JOINT VENTURE

- Remaining Level of Ef...
- Actual Work
- Remaining Work
- Critical Remaining Work
- Milestone

Contract DC/2019/10 - YLEPP - Main Works for Stage 1

Monthly Progress Report No. 39- 3MRP (Jan 24)

Project ID : DWPr34_240209
Layout : DC201910 MPR39-3MRP
Page 11 of 11

Monthly Progress Report - 3MRP

Date	Revision	Checked	Approved
31-Jan-24	Rev. 0		