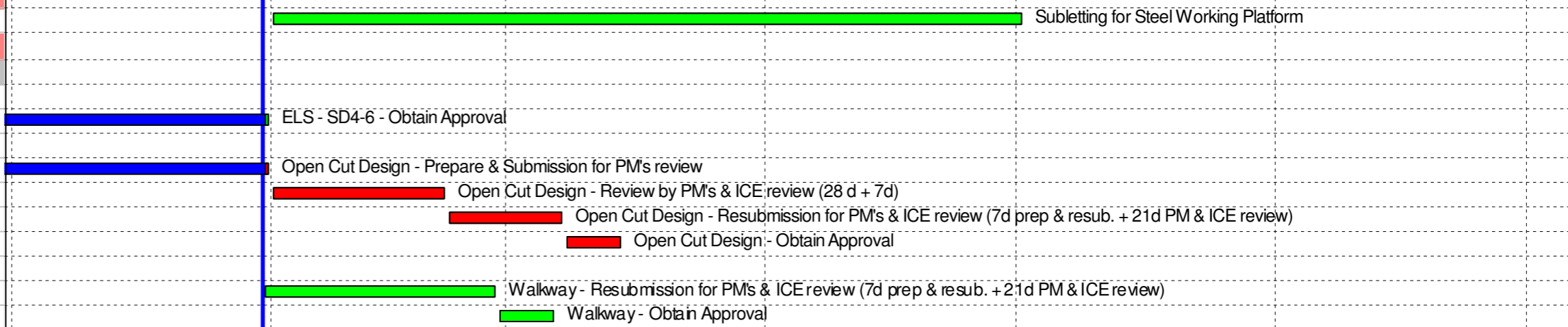


Activity ID	Activity Name	Orig Dur	Early Start	Early Finish	Total Float	January					February				March				April				May				June				July	
						63					64				65				66				67				68				69	
						8	04	11	18	25	01	08	15	22	01	08	15	22	29	05	12	19	26	03	10	17	24	31	07	14	21	28
YLEPP Stage 1 - Detailed Works Programme DPv58_20260212																																
Contract Data Part 1																																
Access Dates																																
ADP4	Portion 4 (sd+1599d)	0	31-Jan-26*		-310																											
Contract Key Dates																																
CKD3	KD3 - Early Commissioning of Inlet Works100,000m3/d at ADWF,PST>54,000m3/d at ADWF,Civil,struct,E&M & BS (R.KD3=25May24)	0	31-Jan-26*		-247																											
Environmental Constraints																																
NMM-2185	PS 1.105A Noise Mitigation Measures 2025-2026	151	01-Nov-25 A	31-Mar-26	406																											
Planned Completion																																
Compensation Events																																
CE625	Implementation of Compensation Event (CE) No.625 - Amber Rainstorm Warning and Incident Weather in July 2025	0		07-Jan-26 A																												
CE636	Implementation of Compensation Event (CE) No.636 - Amber Rainstorm Warning and Incident Weather in August 2025	0		07-Jan-26 A																												
CE641	Implementation of Compensation Event (CE) No.613 - Amber Rainstorm Warning and Incident Weather in September 2025	0		07-Jan-26 A																												
Preliminary and Preparation Works																																
Subletting																																
SUB-320	Subletting for Steel Working Platform	90	01-Feb-26	01-May-26	501																											
Design Submission																																
Temporary Works Design																																
Sludge Digester 4-6																																
TWD-490	ELS - SD4-6 - Obtain Approval	7	21-Jun-25 A	31-Jan-26	1048																											
Administration Building																																
TWD-300	Open Cut Design - Prepare & Submission for PM's review	30	15-Sep-25 A	31-Jan-26	-71																											
TWD-310	Open Cut Design - Review by PM's & ICE review (28 d + 7d)	21	01-Feb-26	21-Feb-26	-71																											
TWD-320	Open Cut Design - Resubmission for PM's & ICE review (7d prep & resub. + 21d PM & ICE review)	14	22-Feb-26	07-Mar-26	-71																											
TWD-330	Open Cut Design - Obtain Approval	7	08-Mar-26	14-Mar-26	-71																											
Walkway Across Tai Tseng Wai Nullah																																
TWD-620	Walkway - Resubmission for PM's & ICE review (7d prep & resub. + 21d PM & ICE review)	28	31-Jan-26	27-Feb-26	451																											
TWD-640	Walkway - Obtain Approval	7	28-Feb-26	06-Mar-26	451																											
Temporary diversion scheme for Early commissioning of SD, BH1, H2S and STB																																
TWD-1010	Temp. pipe. for SD1-2 Early Comm.-Prep(90d),Sub.&Review(30d) Comment&Resub(14d)&Approval(7d)	120	29-Dec-23 A	31-Jan-26	-3																											
TWD-990	Temp. pipe. SD1&2 and BH1 to H2S for T&C-Prep(90d),Sub.&Review(30d) Comment&Resub(14d)&Approval(7d)	120	30-Jun-25 A	31-Jan-26	191																											
TWD-1000	Temp. pipe. SD1&2 for T&C of STB -Prep(90d),Sub.&Review(30d) Comment&Resub(14d)&Approval(7d)	120	30-Jun-25 A	31-Jan-26	-4																											
TWD-980	Temp. pipe. for T&C of SD3-4-Prep(90d),Sub.&Review(30d) Comment&Resub(14d)&Approval(7d)	120	01-Feb-26	31-May-26	246																											
Contractor's Permanent Works Design (include ATAL)																																
DDA																																
Package 2 - Tertiary Treatment System																																
DDA-210	Electrical& Control for TTS - 2E	213	31-Dec-21 A	28-Feb-26	-340																											
DDA-140	SCADS System Deodourisation Unit No.2 and Plant Services Water System for TTS - 2G	126	12-Sep-23 A	28-Feb-26	1020																											
DDA-220	Building Services (BS) for TTS - 2F	199	30-Oct-23 A	28-Feb-26	-340																											
Package 3 - Mainstream Bio-Reactor System																																
DDA-300	Electrical& Control for MBS - 3E	405	08-Oct-21 A	28-Feb-26	-226																											
DDA-255	SCADA System - 3G	204	16-Jun-23 A	28-Feb-26	-176																											
DDA-310	Building Services (BS) for MBS - 3F	151	23-Oct-24 A	28-Feb-26	-216																											
Package 5 - Master Water Meter Room & PSW																																
DDA-390	P&ID for Plant Service Water System - 5D1	64	26-Jun-23 A	31-Jan-26	1048																											
DDA-385	Mechanical Design for Plant Service Water System - 5D2	64	17-May-25 A	31-Jan-26	1048																											
Package 6 - Sludge Thickening Chemical and Dosing System																																
DDA-1140	Electrical & Control for STCDS - 6E2	315	30-Nov-21 A	31-Jan-26	1048																											
DDA-1150	Building Services for STCDS - 6F4	126	24-Oct-22 A	31-Jan-26	1048																											
DDA-440	SCADA System - 6G	250	15-Oct-24 A	31-Jan-26	518																											
Package 11 - Control and Monitoring System																																
DDA-580	Power Quality & Energy Management System (POEMS) - 11G4	130	02-Oct-21 A	28-Feb-26	1020																											
DDA-550	Supervisory Control & Data Application (SCADA) System - 11G1	238	24-Apr-23 A	31-Mar-26	989																											
DDA-1270	Gas Detection System - 11G5	91	08-May-23 A	31-Mar-26	-247																											
DDA-560	Computerised Maintenance Management System (CMMS) - 11G2	275	30-Jun-25 A	31-May-26	212																											
DDA-570	Information and Document management System (IDMS) - 11G3	275	30-Jun-25 A	31-May-26	928																											
Package 14 - Sludge Anaerobic Digestion System (SDT)																																
DDA-1330	Building Services for SDT & UC/PP - 14F4	180	02-May-23 A	28-Feb-26	95																											
DDA-1640	Fire Services Design - 14F1	180	28-Jan-25 A	28-Feb-26	-32																											
DDA-1650	Mechanical Ventilation and Air Conditional System Design - 14F2	180	13-Feb-25 A	28-Feb-26	-32																											
Package 15 - Biogas H2S Removal, Storage and Delivery System																																
DDA-1390	Fire Services for Biogas H2S Removal System - 15F1	137	31-May-23 A	28-Feb-26	-83																											
DDA-1380	Electrical & Control for Biogas H2S Removal System - 15F4	105	25-Sep-23 A	28-Feb-26	-83																											
Package 16 - Deodorization Unit System																																
DDA-1430	Mechanical for DOU No. 2A and 2B - 16D3	122	13-Oct-23 A	28-Feb-26	-148																											
Package 17 - Sludge Dewatering Building (SDB)																																
DDA-950	Civil Req. Drawing for SDB (Transformer Room Only) - 17C2	120	27-Apr-23 A	28-Feb-26	-90																											
DDA-910	Civil Req. Drawing for SDB (Utilities Corridor Zone) - 17C1	120	27-Mar-24 A	28-Feb-26	-90																											
Package 22 - Sampling System of YLEPP																																
DDA-740	Sampling System for IW&PST, AGS&TTB, SDT, STB	120	07-Jul-23 A	28-Feb-26	1020																											
Package 23 - Security, Public Address and Communication System																																
DDA-750	Security, Public Address and Communication System	120	28-Jun-23 A	31-Mar-26	-299																											
Design out of ATAL's Scope																																
DDA-730	Civil & Structural for Steel Working Platform	100	02-Sep-22 A	31-Jan-26	501																											
DDA-1560	Street Fire Hydrant System	120	22-Dec-23 A	31-Jan-26	228																											
DDA-660	Pipeworks System for Sludge Thickening Building (STB)	120	15-Oct-24 A	31-Jan-26	1048																											

- ◆ Implementation of Compensation Event (CE) No.625 - Amber Rainstorm Warning and Incident Weather in July 2025
- ◆ Implementation of Compensation Event (CE) No.636 - Amber Rainstorm Warning and Incident Weather in August 2025
- ◆ Implementation of Compensation Event (CE) No.613 - Amber Rainstorm Warning and Incident Weather in September 2025



- Remaining Level of Effort
- Actual Work
- Remaining Work
- Critical Remaining Work
- Milestone

Contract DC/2019/10 - YLEPP - Main Works for Stage 1
Monthly Progress Report No. 63- 3MRP (Jan 26)

Project ID : DWPv58_260212
 Layout : DC201910 MPR63-3MRP
 Page 1 of 8

Monthly Progress Report - 3MRP			
Date	Revision	Checked	Approved
31-Jan-26			

Activity ID	Activity Name	Orig Dur	Early Start	Early Finish	Total Float	January					February					March					April					May					June					July				
						63					64					65					66					67					68					69				
						8	04	11	18	25	01	08	15	22	01	08	15	22	29	05	12	19	26	03	10	17	24	31	07	14	21	28	05							
DDA-685	Pipeworks System for Sludge Digesters (SD)	120	02-Dec-24 A	31-Jan-26	-4																																			
DDA-1550	Rainwater Drainage Systems	120	31-Jan-26	30-May-26	377																																			
DDA-690	Pipeworks System for Sludge Dewatering Building (SDB)	120	01-Feb-26	31-May-26	38																																			
DDA-700	Pipeworks System for Utility Corridor&Pipe Portal (UC/PP)	120	01-Feb-26	31-May-26	407																																			
DDA-1570	BS at Education Corridor	120	01-Feb-26	31-May-26	331																																			
DDA-1580	Lift Installation at TTS & ADB	120	01-Feb-26	31-May-26	331																																			
Technical Submission																																								
Operation and Maintenance (O&M) Manuals and Installation Manuals (PS 34.20(11)(12)(13))																																								
Inlet Works and Primary Sedimentation Tank																																								
SUBM-1070	Submit/review/approval Operation and Maintenance (O&M) Manuals and Installation Manuals - 1st	60	15-Dec-23 A	31-Jan-26	92																																			
SUBM-1200	Submit/review/approval Operation and Maintenance (O&M) Manuals and Installation Manuals - rev	30	01-Feb-26	02-Mar-26	92																																			
SUBM-1210	Submit/review/approval Operation and Maintenance (O&M) Manuals and Installation Manuals - final	30	03-Mar-26	01-Apr-26	92																																			
AGS and TTS system																																								
SUBM-1220	Submit/review/approval Operation and Maintenance (O&M) Manuals and Installation Manuals - 1st	60	02-Apr-26	31-May-26	92																																			
Sludge Thickening System																																								
SUBM-1250	Submit/review/approval Operation and Maintenance (O&M) Manuals and Installation Manuals - 1st	60	30-Dec-25 A	28-Feb-26	153																																			
SUBM-1260	Submit/review/approval Operation and Maintenance (O&M) Manuals and Installation Manuals - rev	30	01-Mar-26	30-Mar-26	153																																			
Sludge Disgestion System																																								
SUBM-1310	Submit/review/approval Operation and Maintenance (O&M) Manuals and Installation Manuals - 1st	60	01-Mar-26	29-Apr-26	100																																			
Biogas H2S Removal System																																								
SUBM-1280	Submit/review/approval Operation and Maintenance (O&M) Manuals and Installation Manuals - 1st	60	01-Mar-26	29-Apr-26	405																																			
Deodorization System																																								
SUBM-1360	Submit/review/approval Operation and Maintenance (O&M) Manuals and Installation Manuals - final	30	02-Mar-26	31-Mar-26	584																																			
Commissioning Plan and Procedures (PS34.20(10))																																								
SUBM-1020	Submit/review/approval Commissioning Plan and Procedures - AGS	120	31-Jan-26	30-May-26	-130																																			
SUBM-1030	Submit/review/approval Commissioning Plan and Procedures - TTS	120	31-Jan-26	30-May-26	-130																																			
SUBM-1040	Submit/review/approval Commissioning Plan and Procedures - STB	120	31-Jan-26	30-May-26	152																																			
SUBM-1050	Submit/review/approval Commissioning Plan and Procedures - SDT	120	31-Jan-26	30-May-26	159																																			
SUBM-1060	Submit/review/approval Commissioning Plan and Procedures - BH	120	31-Jan-26	30-May-26	159																																			
Material Submission, Procurement, Manufacturing and Delivery																																								
Biogas Holder																																								
PRE-410	Submit/Procure/Manufacture/Deliver Waste Gas Burner	300	19-Aug-21 A	30-Sep-26	271																																			
PRE-430	Submit/Procure/Manufacture/Deliver Biogas Booster and Transfer Pumps	457	28-Jun-24 A	30-Sep-26	210																																			
Mainstream Bio-Reactor																																								
PRE-230	Submit/Procure/Manufacture/Deliver Main Stream Bio-Reactor E&M Equip. - AGS system	480	09-Sep-22 A	28-Feb-26	-216																																			
PRE-530	Submit/Procure/Manufacture/Deliver Main Stream Bio-Reactor E&M Equip. - Penstocks and stoplogs	345	31-Oct-22 A	28-Feb-26	-136																																			
PRE-550	Submit/Procure/Manufacture/Deliver Main Stream Bio-Reactor E&M Equip. - Sludge pre-thickening	510	31-Oct-22 A	28-Feb-26	-160																																			
PRE-540	Submit/Procure/Manufacture/Deliver Main Stream Bio-Reactor E&M Equip. - Chemical storage and dosing system	270	18-Nov-22 A	28-Feb-26	-216																																			
PRE-570	Submit/Procure/Manufacture/Deliver Main Stream Bio-Reactor E&M Equip. - Instrumentation	481	03-Apr-24 A	30-Jun-26	-257																																			
PRE-560	Submit/Procure/Manufacture/Deliver Main Stream Bio-Reactor E&M Equip. - LALG	349	16-Jul-24 A	30-May-26	-307																																			
PRE-580	Submit/Procure/Manufacture/Deliver Main Stream Bio-Reactor E&M Equip. - MVAC	138	16-Dec-24 A	30-May-26	-307																																			
Tertiary Treatment System																																								
PRE-620	Submit/Procure/Manufacture/Deliver TTS Equip. - LALG	150	27-Mar-23 A	28-Feb-26	-157																																			
PRE-690	Submit/Procure/Manufacture/Deliver TTS Equip. - DOU-02	500	07-Sep-23 A	28-Feb-26	-157																																			
Statutory Submission & Approval																																								
FSI, FSD and OP Requirements																																								
FSD OP Submission & Approval																																								
Phase 1 (IW/PST)																																								
FSD-1060	FSD Fire Services Installation Plan for Building (Form 314) and Form 501 Preparation & Submission	14	13-Mar-26	26-Mar-26	-337																																			
FSD-1070	FSD Inspection[14D]+Re-Inspection&Defects[14D]	28	27-Mar-26	23-Apr-26	-337																																			
FSD-1080	FSD - Issuance of FSD Certificate FS172 (7 Days following to Inspection)	7	24-Apr-26	30-Apr-26	-337																																			
WSD Submission & Approval																																								
WSD-1030	WSD - Form WWO46 Part 1 and 2 PM&WSD review and approval	60	30-Sep-25 A	31-Jan-26	507																																			
WSD-1040	WSD - Submit Form WWO46 Part 4 (Fresh/Flush/FS)	0		28-Feb-26	503																																			
WSD-1050	WSD - WSD inspection	14	01-Mar-26	14-Mar-26	503																																			
WSD-1060	WSD - Water supply connection	7	15-Mar-26	21-Mar-26	503																																			
WSD-1070	WSD - Submit as-built dwg, material info,water sampling test result,CCTV survey/swabbing record, valve detail to P	7	22-Mar-26	28-Mar-26	503																																			
WSD-1080	WSD - WSD Obtain of WWO46 Part 5	0		28-Mar-26	503																																			
EMSD Submission & Approval																																								
Biogas System (ATAL)																																								
Phase 1																																								
ATAL-FS-0020	Form 105 for Biogas Holder Tank 1(Submission and Approval Period)	184	03-Jun-24 A	03-Mar-26	93																																			
Zone 1 Construction																																								
CLP Substations No. 1 & 2																																								
CLP Substation No. 1 & 2 & DSD 11kV Switchgear - GRC Cladding																																								
CLP-1600	CLP Substation No.1 & 2 & DSD11KV Switchgear - GRC cladding - installation	75	18-Sep-24 A	28-Feb-26	499																																			
Modification of Existing Emergency Bypass Chamber																																								
Emergency Bypass Chamber - Structural Works																																								
IW-3150	IW - Modification of Existing Emergency Bypass Chamber - Plug off existing 1800mm dia. pipe	1	31-Jan-26	31-Jan-26	-205																																			
Modification of Existing Inspection Chamber & Inlet Effluent Pipes from NSWSPS																																								
IW-1320	Modification of Existing Inspection Chamber - ELS works + Pipe Laying	18	28-Nov-25 A	26-Feb-26	-273																																			
IW-1350	Modification of Existing Inspection Chamber - Trimming works and Changeover Pipe (Eastern)	18	19-Jan-26 A	28-Feb-26	-114																																			
IW-2980	Modification of Existing Inspection Chamber - Trimming works and Changeover Pipe (Western)	14	02-Mar-26	17-Mar-26	-114																																			
IW-1340	Modification of Existing Inspection Chamber - Backfilling Works	12	17-Mar-26	30-Mar-26	-114																																			
Inlet Works (IW)																																								
IW Civil and Structural Works																																								
IW Civil and Structure Works (Remaining Area)																																								



■ Remaining Level of Effort
■ Actual Work
■ Remaining Work
■ Critical Remaining Work
◆ Milestone

Contract DC/2019/10 - YLEPP - Main Works for Stage 1 Monthly Progress Report No. 63- 3MRP (Jan 26)

Project ID : DWP:58_260212
 Layout : DC201910 MPR63-3MRP
 Page 2 of 8

Monthly Progress Report - 3MRP

Date	Revision	Checked	Approved
31-Jan-26			

Activity ID	Activity Name	Orig Dur	Early Start	Early Finish	Total Float	January 63					February 64				March 65				April 66				May 67				June 68				July 69		
						8	04	11	18	25	01	08	15	22	01	08	15	22	29	05	12	19	26	03	10	17	24	31	07	14	21	28	05
ATALPST-5730	PST Stage 1 - SCADA - Cabling Works	38	22-Sep-25 A	31-Jan-26	848	PST Stage 1 - SCADA - Cabling Works																											
ATALPST-5740	PST Stage 1 - SCADA - Termination Works	38	22-Sep-25 A	31-Jan-26	848	PST Stage 1 - SCADA - Termination Works																											
PST Stage 1 - BS Works (PST 1-3, Inlet/Outlet Channel & Pump Room)																																	
ATALPST-5750	PST Stage 1 - MVAC Works	43	01-Nov-25 A	14-Feb-26	838	PST Stage 1 - MVAC Works																											
ATALPST-5760	PST Stage 1 - ELV Works	43	01-Nov-25 A	14-Feb-26	838	PST Stage 1 - ELV Works																											
ATALPST-5770	PST Stage 1 - P&D Works	43	01-Nov-25 A	14-Feb-26	415	PST Stage 1 - P&D Works																											
ATALPST-5780	PST Stage 1 - EL Works	43	01-Nov-25 A	14-Feb-26	838	PST Stage 1 - EL Works																											
ATALPST-5790	PST Stage 1 - FS Works	43	01-Dec-25 A	14-Feb-26	415	PST Stage 1 - FS Works																											
PST Stage 1 - T&C Works																																	
PST Stage 1 - T&C Works (PST 1-3, Inlet / Outlet Channel & Pump Room)																																	
PST-PKD3	PST - PKD3 (11-Mar-24)	0		14-Apr-26	-321	◆ PST - PKD3 (11-Mar-24)																											
Phase 1 - PST 1-3 Sub-System Physical Dry Check																																	
ATALPST-5820	PST Stage 1 - SCADA- I/O Point Test (not required for interim scheme T&C)	49	01-Nov-25 A	14-Feb-26	838	PST Stage 1 - SCADA- I/O Point Test (not required for interim scheme T&C)																											
ATALPST-5810	PST Stage 1 - Electrical - Megger Test	13	31-Jan-26	14-Feb-26	838	PST Stage 1 - Electrical - Megger Test																											
Phase 4 - PST 1-3 System Reliability & Performance Test c/w IW (Sewage)																																	
ATALPST-6000	PST Stage 1 - System Reliability & Performance Test c/w IW (Sewage)	60	14-Jan-26 A	28-Feb-26	-306	PST Stage 1 - System Reliability & Performance Test c/w IW (Sewage)																											
Phase 5 - System Commissioning Test c/w IW (Sewage)																																	
ATALPST-6010	PST Stage 1 - System Commissioning Test c/w IW (Sewage)	30	02-Mar-26	31-Mar-26	-307	PST Stage 1 - System Commissioning Test c/w IW (Sewage)																											
External Works - IWB & PST																																	
IWPST External Works - Roadworks																																	
EW-1550	IW/PST Perimeter - Temporary Road Pavement for OP EVA after the modification existing inspection chamber (pipe laying)	12	27-Feb-26	12-Mar-26	-273	IW/PST Perimeter - Temporary Road Pavement for OP EVA after the modification existing inspection chamber (pipe laying)																											
Sludge Dewatering Building (SDB)																																	
SDB Foundation & ELS																																	
SDB Foundation - PST 1-4 Footprint																																	
SDB Foundation - ELS																																	
SDB Foundation - ELS																																	
SDB Foundation - ELS Zone A & B (S1 to S3)																																	
SDB-6020	SDB - ELS Stage 1 - Preloading Strut S3	5	22-Dec-25 A	31-Dec-25		SDB - ELS Stage 1 - Preloading Strut S3																											
SDB-6120	SDB - ELS Stage 1 - Excavation (+0.8 to -1.625mPD) (9,500m3, 600m3/d) *MD	12	27-Dec-25 A	19-Jan-26 A		SDB - ELS Stage 1 - Excavation (+0.8 to -1.625mPD) (9,500m3, 600m3/d) *MD																											
SDB Foundation - ELS Zone A & B (Base Slab and S4)																																	
SDB Foundation - ELS (Base Slab and S4) - Zone A																																	
SDB-6300	SDB - ELS Stage 1 - Capping plate, blinding and waterproofing @ Bay 2	5	07-Jan-26 A	29-Jan-26 A		SDB - ELS Stage 1 - Capping plate, blinding and waterproofing @ Bay 2																											
SDB-6305	SDB - ELS Stage 1 - Capping plate, blinding and waterproofing @ Bay 1	5	21-Jan-26 A	04-Feb-26	-94	SDB - ELS Stage 1 - Capping plate, blinding and waterproofing @ Bay 1																											
SDB-6315	SDB - ELS Stage 1 - Capping plate, blinding and waterproofing @ Bay 5	5	21-Jan-26 A	06-Feb-26	-72	SDB - ELS Stage 1 - Capping plate, blinding and waterproofing @ Bay 5																											
SDB-6310	SDB - ELS Stage 1 - Capping plate, blinding and waterproofing @ Bay 4	5	24-Jan-26 A	07-Feb-26	-75	SDB - ELS Stage 1 - Capping plate, blinding and waterproofing @ Bay 4																											
SDB-6320	SDB - ELS Stage 1 - Capping plate, blinding and waterproofing @ Bay 9	6	26-Jan-26 A	10-Feb-26	-69	SDB - ELS Stage 1 - Capping plate, blinding and waterproofing @ Bay 9																											
SDB-6050	SDB - ELS Stage 1 - Structure (-1.625 to -0.05mPD) partial base slab @ Bay 2 (Step1)	8	31-Jan-26	09-Feb-26	-90	SDB - ELS Stage 1 - Structure (-1.625 to -0.05mPD) partial base slab @ Bay 2 (Step1)																											
SDB-6052	SDB - ELS Stage 1 - Structure (-1.625 to -0.05mPD) partial base slab @ Bay 1 (Step1)	8	05-Feb-26	13-Feb-26	-94	SDB - ELS Stage 1 - Structure (-1.625 to -0.05mPD) partial base slab @ Bay 1 (Step1)																											
SDB-6100	SDB - ELS Stage 1 - Structure (-1.625 to -0.05mPD) partial base slab @ Bay 4 (Step3)	8	11-Feb-26	23-Feb-26	-77	SDB - ELS Stage 1 - Structure (-1.625 to -0.05mPD) partial base slab @ Bay 4 (Step3)																											
SDB-6055	SDB - ELS Stage 1 - Backfill the Gap (-1.625 to -0.05mPD) @ Bay 1 & 2	5	14-Feb-26	23-Feb-26	-40	SDB - ELS Stage 1 - Backfill the Gap (-1.625 to -0.05mPD) @ Bay 1 & 2																											
SDB-6102	SDB - ELS Stage 1 - Structure (-1.625 to -0.05mPD) partial base slab @ Bay 5 (Step3)	8	16-Feb-26	27-Feb-26	-79	SDB - ELS Stage 1 - Structure (-1.625 to -0.05mPD) partial base slab @ Bay 5 (Step3)																											
SDB-6240	SDB - ELS Stage 1 - Structure (-1.625 to -0.05mPD) partial base slab @ Bay 9	10	26-Feb-26	09-Mar-26	-79	SDB - ELS Stage 1 - Structure (-1.625 to -0.05mPD) partial base slab @ Bay 9																											
SDB-6105	SDB - ELS Stage 1 - Backfill the Gap (-1.625 to -0.05mPD) @ Bay 4	5	28-Feb-26	05-Mar-26	-49	SDB - ELS Stage 1 - Backfill the Gap (-1.625 to -0.05mPD) @ Bay 4																											
SDB-6245	SDB - ELS Stage 1 - Backfill the Gap (-1.625 to -0.05mPD) @ Bay 9	5	10-Mar-26	14-Mar-26	-53	SDB - ELS Stage 1 - Backfill the Gap (-1.625 to -0.05mPD) @ Bay 9																											
SDB Foundation - ELS (Base Slab and S4) - Zone B																																	
SDB-1400	SDB - ELS Stage 1 - Excavation (Bay 3, -1.625 to -2.625mPD) *MD	3	19-Jan-26 A	22-Jan-26 A		SDB - ELS Stage 1 - Excavation (Bay 3, -1.625 to -2.625mPD) *MD																											
SDB-6340	SDB - ELS Stage 1 - Capping plate, blinding and waterproofing @ Bay 3	5	19-Jan-26 A	03-Feb-26	-95	SDB - ELS Stage 1 - Capping plate, blinding and waterproofing @ Bay 3																											
SDB-6060	SDB - ELS Stage 1 - Structure (-2.625 to -1.05mPD) partial base slab @ Bay 3 (Step1)	10	04-Feb-26	14-Feb-26	-95	SDB - ELS Stage 1 - Structure (-2.625 to -1.05mPD) partial base slab @ Bay 3 (Step1)																											
SDB-6030	SDB - ELS Stage 1 - Strut Installation S4 (-0.8mPD) @ Zone Bay 8 (Step2)	9	16-Feb-26	28-Feb-26	-95	SDB - ELS Stage 1 - Strut Installation S4 (-0.8mPD) @ Zone Bay 8 (Step2)																											
SDB-6250	SDB - ELS Stage 1 - Strut Installation S4 (-0.8mPD) @ Zone Bay 7 + Bay 10 (Step2)	9	16-Feb-26	28-Feb-26	-85	SDB - ELS Stage 1 - Strut Installation S4 (-0.8mPD) @ Zone Bay 7 + Bay 10 (Step2)																											
SDB-6070	SDB - ELS Stage 1 - Excavation (Bay 6 + Bay 8, -1.625 to -3.825mPD) *MD (Step4)	3	02-Mar-26	04-Mar-26	-95	SDB - ELS Stage 1 - Excavation (Bay 6 + Bay 8, -1.625 to -3.825mPD) *MD (Step4)																											
SDB-6140	SDB - ELS Stage 1 - Excavation (Bay 7, -1.625 to -2.625mPD) *MD (Step4)	3	02-Mar-26	04-Mar-26	-85	SDB - ELS Stage 1 - Excavation (Bay 7, -1.625 to -2.625mPD) *MD (Step4)																											
SDB-6330	SDB - ELS Stage 1 - Capping plate, blinding and waterproofing @ Bay 6 + Bay 8	7	05-Mar-26	12-Mar-26	-95	SDB - ELS Stage 1 - Capping plate, blinding and waterproofing @ Bay 6 + Bay 8																											
SDB-6350	SDB - ELS Stage 1 - Capping plate, blinding and waterproofing @ Bay 7	7	05-Mar-26	12-Mar-26	-85	SDB - ELS Stage 1 - Capping plate, blinding and waterproofing @ Bay 7																											
SDB-6080	SDB - ELS Stage 1 - Structure (-3.825 to -0.05mPD) Base slab and Transition Wall @ Bay 6 + Bay 8 (Step5+7)	10	13-Mar-26	24-Mar-26	-95	SDB - ELS Stage 1 - Structure (-3.825 to -0.05mPD) Base slab and Transition Wall @ Bay 6 + Bay 8 (Step5+7)																											
SDB-6130	SDB - ELS Stage 1 - Structure (-3.825 to -1.05mPD) Base slab and Transition Wall @ Bay 7 (Step6)	10	25-Mar-26	09-Apr-26	-95	SDB - ELS Stage 1 - Structure (-3.825 to -1.05mPD) Base slab and Transition Wall @ Bay 7 (Step6)																											
SDB-6085	SDB - ELS Stage 1 - Backfill the Gap @ Bay 8 North Side	4	25-Mar-26	28-Mar-26	-85	SDB - ELS Stage 1 - Backfill the Gap @ Bay 8 North Side																											
SDB-6135	SDB - ELS Stage 1 - Backfill the Gap @ Bay 7 West Side	4	10-Apr-26	14-Apr-26	-95	SDB - ELS Stage 1 - Backfill the Gap @ Bay 7 West Side																											
SDB-6630	SDB - ELS Stage 1 - Excavation (Bay 10, -1.625 to -2.625mPD) *MD	3	15-Apr-26	17-Apr-26	-95	SDB - ELS Stage 1 - Excavation (Bay 10, -1.625 to -2.625mPD) *MD																											
SDB-6640	SDB - ELS Stage 1 - Capping plate, blinding and waterproofing @ Bay 10	7	18-Apr-26	25-Apr-26	-95	SDB - ELS Stage 1 - Capping plate, blinding and waterproofing @ Bay 10																											
SDB-6460	SDB - ELS Stage 1 - Structure (-2.625/-1.625 to -0.05mPD) Base slab and Transition Wall @ Bay	10	27-Apr-26	08-May-26	-95	SDB - ELS Stage 1 - Structure (-2.625/-1.625 to -0.05mPD) Base slab and Transition Wall @ Bay																											
SDB Structure																																	
SDB Structure Zone A and B																																	
SDB Structure Zone 3B and 4B																																	
SDB-6150	SDB - Structure Zone B - Structure to Ground Floor (-1.05 to +5.95mPD) @ Bay 4	12	30-Mar-26	16-Apr-26	-69	SDB - Structure Zone B - Structure to Ground Floor (-1.05 to +5.95mPD) @ Bay 4																											
SDB-6200	SDB - Structure Zone B - G/F to First Floor (+5.95 to 13.45mPD) @ Bay 4	15	17-Apr-26	05-May-26	-47	SDB - Structure Zone B - G/F to First Floor (+5.95 to 13.45mPD) @ Bay 4																											
SDB-6175	SDB - Structure Zone B - Waterproofing + Backfill the Gap (-1.05 to +5.95mPD) @ Bay 4	12	17-Apr-26	30-Apr-26	-25	SDB - Structure Zone B - Waterproofing + Backfill the Gap (-1.05 to +5.95mPD) @ Bay 4																											
SDB Structure Zone 2A and 2B																																	
SDB-6490	SDB - Structure to Ground Floor (-0.05 to +5.95mPD) @ Bay 2 + Bay 3	8	16-Mar-26	24-Mar-26	-53	SDB - Structure to Ground Floor (-0.05 to +5.95mPD) @ Bay 2 + Bay 3																											
SDB-6580	SDB - Structure Zone A - G/F to First Floor (+5.95 to 13.45mPD) @ Bay 2 + Bay 3	15	25-Mar-26	15-Apr-26	-31	SDB - Structure Zone A - G/F to First Floor (+5.95 to 13.45mPD) @ Bay 2 + Bay 3																											
SDB-6610	SDB - Structure Zone A - First Floor to Roof (+13.45 to 18.15mPD) @ Bay 2 + Bay 3	24	16-Apr-26	14-May-26	-31	SDB - Structure Zone A - First Floor to Roof (+13.45 to 18.15mPD) @ Bay 2 + Bay 3																											
SDB-6720	SDB - Backfill the Gap (-0.05 to +5.95mPD) @ Bay 2	12	16-Apr-26	29-Apr-26	-14	SDB - Backfill the Gap (-0.05 to +5.95mPD) @ Bay 2																											
SDB Structure Zone C1 (Ramp)																																	
SDB-2340	SDB - Zone C1 Ramp - Install capping plate, blinding and waterproofing	8	11-Feb-26	23-Feb-26	-67	SDB - Zone C1 Ramp - Install capping plate, blinding and waterproofing																											
SDB-2210	SDB - Zone C1 Ramp - Structure to G/F (-1.55 to +0.5mPD) base slab @ Bay 11 (Step11)	10	10-Mar-26	20-Mar-26	-79	SDB - Zone C1 Ramp - Structure to G/F (-1.55 to +0.5mPD) base slab @ Bay 11 (Step11)																											
SDB-6430	SDB - Zone C1 Ramp - Remove formwork, waterproofing, backfill (-1.55 to +0.5mPD)	8	21-Mar-26	30-Mar-26	-79	SDB - Zone C1 Ramp - Remove formwork, waterproofing, backfill (-1.55 to +0.5mPD)																											
SDB-6760	SDB - Zone C1 Ramp - Remove S3I & S3H Struts (+1.3mPD)	4	31-Mar-26	08-Apr-26	-79	SDB - Zone C1 Ramp - Remove S3I & S3H Struts (+1.3mPD)																											
SDB-2240	SDB - Zone C1 Ramp - Structure to Ground Floor (+0.5 to +3.0mPD)	14	09-Apr-26	24-Apr-26	-79	SDB - Zone C1 Ramp - Structure to Ground Floor (+0.5 to +3.0mPD)																											



	Remaining Level of Effort
	Actual Work
	Remaining Work
	Critical Remaining Work
	Milestone

Contract DC/2019/10 - YLEPP - Main Works for Stage 1
Monthly Progress Report No. 63- 3MRP (Jan 26)

Project ID : DWP:58_260212
Layout : DC201910 MPR63-3MRP
Page 4 of 8

Monthly Progress Report - 3MRP			
Date	Revision	Checked	Approved
31-Jan-26			

Activity ID	Activity Name	Orig Dur	Early Start	Early Finish	Total Float	January					February				March				April				May				June				July
						63					64				65				66				67				68				69
						8	04	11	18	25	01	08	15	22	01	08	15	22	29	05	12	19	26	03	10	17	24	31	07	14	21
MBR Structure Zone B (Tank 1 and Tank 3)																															
Tank 1 (Zone 1)																															
MBRAF-2660	MBR - Remove S4 + Steel Platform B Bottom Bracing	4	16-Jan-26 A	22-Jan-26 A																											
MBRAF-2690	MBR - Construct Beam / Wal (-5.6 to -1.4mPD)	24	22-Jan-26 A	14-Feb-26	-329																										
MBRAF-2710	MBR - Construct Beam / Wal (-1.4 to +5.15mPD)	20	16-Feb-26	13-Mar-26	-329																										
MBRAF-4900	MBR - Wall and Intermediate slab (+5.15 to +8.65mPD)	24	11-Apr-26	09-May-26	-329																										
Tank 3 (Zone 3)																															
MBRAF-4800	MBR - Remove S4, + Steel Platform B Bottom Bracing	4	16-Jan-26 A	22-Jan-26 A																											
MBRAF-4830	MBR - Construct Beam / Wal (-5.6 to -1.4mPD)	24	22-Jan-26 A	14-Feb-26	-329																										
MBRAF-4850	MBR - Construct Beam / Wal (-1.4 to +5.15mPD)	20	14-Mar-26	10-Apr-26	-329																										
Tertiary Treatment System (TTS)																															
TTS Structure																															
TTS Substructure																															
Substructure																															
TTS-2320-3	TTS - Removal of East Steel Deck/ Platform (Zone SE)	15	09-Feb-26	28-Feb-26	-345																										
Zone SD																															
TTS-2330-2	TTS - Zone SD Wal (+4.75mPD to +5.95mPD) and Slab to +5.95mPD (LG3 - G3)	16	30-Nov-25 A	13-Jan-26 A																											
TTS-2340	TTS - Zone SD Waterproofing and Backfill	5	31-Jan-26	05-Feb-26	-275																										
Zone SA																															
TTS-1490-1	TTS - Zone SA Wall to S1 (+1.1mPD to +3.8mPD) (LG/F - LG4)	8	08-Dec-25 A	16-Jan-26 A																											
TTS-2350-1	TTS - Zone SA Wall (+3.8mPD to +5.95mPD) and Slab to +5.95mPD (G/F - G4)	13	10-Jan-26 A	29-Jan-26 A																											
TTS-2360	TTS - Zone SA Waterproofing and Backfill	5	31-Jan-26	05-Feb-26	-270																										
Zone SB																															
TTS-1510-1	TTS - Zone SB Remove Corner Strut at +3.65mPD (LG7)	9	19-Dec-25 A	22-Dec-25																											
TTS-2370-1	TTS - Zone SB Wal (+2.183mPD to +4.05mPD) and Slab (LG7)	8	23-Dec-25 A	21-Jan-26 A																											
TTS-2370-2	TTS - Zone SB Wal (+2.183mPD to +5.5mPD) and Slab to +5.95mPD (G/F - G7)	10	29-Jan-26 A	25-Feb-26	-319																										
TTS-2380	TTS - Zone SB Waterproofing and Backfill	6	26-Feb-26	04-Mar-26	-319																										
Zone SC																															
TTS-2390-1	TTS - Zone SC Wal (+4.2mPD to +5.95mPD) and Slab to +5.95mPD (G/F - G1)	10	12-Jan-26 A	10-Feb-26	-322																										
TTS-2400	TTS - Zone SC Waterproofing and Backfill	5	11-Feb-26	16-Feb-26	-279																										
Zone SE and SG																															
TTS-2410-2.4	TTS - Zone SG Raft, Beam, Column & Slab (-0.05mPD)	12	25-Feb-26	10-Mar-26	-345																										
TTS-2410-2.3	TTS - Zone SE Raft, Beam, Column & Slab (-0.05mPD)	12	02-Mar-26	14-Mar-26	-341																										
TTS-2410-1	TTS - Zone SG Slab, Wall & Column (+2.183mPD) (LG/F - LG5a)	12	11-Mar-26	24-Mar-26	-345																										
TTS-2410-13	TTS - Zone SG Slab, Wall & Column (+2.183mPD) (LG/F - LG5b)	12	18-Mar-26	31-Mar-26	-345																										
TTS-2410-2	TTS - Zone SE Slab, Wal & Column (+2.183mPD) (LG/F - LG6)	12	20-Mar-26	02-Apr-26	-345																										
TTS-2410-3	TTS - Zone SG Raft, Slab, Beam & Column (+2.183mPD) (LG/F - LG8)	12	25-Mar-26	11-Apr-26	-344																										
TTS-2430-2	TTS - Zone SE Slab, Beam & Column (+5.95mPD) (G/F - G5)	12	01-Apr-26	18-Apr-26	-341																										
TTS-2430-1	TTS - Zone SE Slab, Beam & Column (+5.95mPD) (G/F - G6)	12	08-Apr-26	21-Apr-26	-345																										
TTS-2430-3	TTS - Zone SE Slab, Beam & Column (+5.95mPD) (G/F - G8)	12	13-Apr-26	25-Apr-26	-344																										
TTS-2440	TTS - Zone SE Waterproofing and Backfill	5	27-Apr-26	02-May-26	-336																										
Zone SF																															
TTS-2480	TTS - Zone SF Waterproofing and Backfill	5	31-Jan-26 A	07-Feb-26	-345																										
TTS Superstructure																															
TTS-1410-1	TTS - Zone SA Structure (+5.95mPD to +11.75mPD) Slab, Beam & Column (1/F - 1-3)	12	19-Jan-26 A	13-Feb-26	-298																										
TTS-2570-1	TTS - Zone SC Structure (+5.95mPD to +9.40mPD) Slab, Beam & Column (1/F - 1-1)	10	11-Feb-26	25-Feb-26	-315																										
TTS-1370-1	TTS - Zone SD Structure (+5.95mPD to +9.35mPD) Slab, Beam & Column (1/F - 1-2)	10	11-Feb-26	25-Feb-26	-322																										
TTS-2490-1	TTS - Zone SD Structure (+11.75mPD to +15.4mPD) Column, Roof Slab (R3)	21	14-Feb-26	13-Mar-26	-298																										
TTS-2550-1	TTS - Zone SB Structure (+5.95mPD to +15.4mPD) Column, Roof Slab (R7)	21	26-Feb-26	21-Mar-26	-319																										
TTS-2570-2	TTS - Zone SC Structure (+5.95mPD to +9.40mPD) Slab, Beam & Column (1/F - 1-1(2))	10	26-Feb-26	09-Mar-26	-315																										
TTS-1370-2	TTS - Zone SD Structure (+5.95mPD to +12.85mPD) Slab, Beam & Column (1/F - 1-2(2))	10	26-Feb-26	09-Mar-26	-322																										
TTS-2580-1	TTS - Zone SC Structure (+9.4mPD to +15.4mPD) Column, Roof Slab (R1)	21	10-Mar-26	02-Apr-26	-315																										
TTS-2500-2	TTS - Zone SA Structure (+12.85mPD to +15.4mPD) Column, Roof Slab (R4)	12	10-Mar-26	23-Mar-26	-322																										
TTS-2510-1	TTS - Zone SE Structure (+5.95mPD to +15.4mPD) Column, Roof Slab (R5)	12	23-Apr-26	07-May-26	-344																										
TTS-2520-1	TTS - Zone SE Structure (+5.95mPD to +15.4mPD) Column, Roof Slab (R6)	12	25-Apr-26	09-May-26	-342																										
TTS-2540-1	TTS - Zone SF Structure (+5.95mPD to +15.4mPD) Column, Roof Slab (R2)	12	28-Apr-26	12-May-26	-344																										
TTS Water Tightness Test																															
TTS-1910	TTS - Removal Fwk + Water Tight. Test (Phase 1)(water height=1.85m,bulkhead=2d,fill=1d,absopl)	21	22-Apr-26	12-May-26	-427																										
Zone 3 Construction																															
Zone 3 North Portion (Z3N)																															
New Sludge Thickening Building (STB)																															
STB : ABWF																															
STB : ABWF (+6.0 to +18.3mPD)																															
Z3S3-4550	STB - ABWF Works (2nd fix with BS works)	90	15-Sep-25 A	28-Feb-26	83																										
STB : E&M Installation																															
STB E&M : Pump Room Floor @ -2.5mPD																															
Jet Mixing System of Sludge Blank Tank and Thickening Sludge Holding Tank No.2																															
Z3S3-3980	STB - Jet Mixer c/w pipes and valves and Fittings x 4 Nos.	21	17-Jan-26 A	26-Feb-26	-11																										
Z3S3-3990	STB - Nozzle x 3 Nos. (Working inside tanks)	21	17-Jan-26 A	26-Feb-26	-11																										
Z3S3-4000	STB - Leakage test - Combining Stoplogs / Penstocks	32	27-Feb-26	30-Mar-26	-17																										
Jet Mixing System of Thickening Sludge Holding Tank No.1																															
Z3S3-4060	STB - Jet Mixer c/w pipes and valves and Fittings x 2 Nos.	21	17-Jan-26 A	26-Feb-26	-11																										
Z3S3-4070	STB - Nozzle x 2 Nos. (Working inside tanks)	21	17-Jan-26 A	26-Feb-26	-11																										
Z3S3-4080	STB - Leakage test - Combining Stoplogs / Penstocks	32	27-Feb-26	30-Mar-26	-17																										
Thickening Centrifuge & Digester Feed Pump c/w pipes and valves and fittings																															
Z3S3-4120	STB - Digester Feed Pump c/w pipes and valves and fittings	90	02-Sep-25 A	14-Feb-26	-3																										
Z3S3-4150	STB - Thickening Centrifuge Feed Pump c/w pipes and valves and fittings	90	02-Sep-25 A	14-Feb-26	-3																										
Pipeworks Installation @ -2.5mPD																															



■ Remaining Level of Effort
■ Actual Work
■ Remaining Work
■ Critical Remaining Work
◆ Milestone

Contract DC/2019/10 - YLEPP - Main Works for Stage 1 Monthly Progress Report No. 63- 3MRP (Jan 26)

Project ID : DWPPr58_260212
 Layout : DC201910 MPR63-3MRP
 Page 6 of 8

Monthly Progress Report - 3MRP			
Date	Revision	Checked	Approved
31-Jan-26			

Activity ID	Activity Name	Orig Dur	Early Start	Early Finish	Total Float	January 63					February 64					March 65					April 66					May 67					June 68					July 69				
						8	04	11	18	25	01	08	15	22	01	08	15	22	29	05	12	19	26	03	10	17	24	31	07	14	21	28	05							
Z3S3-2990	STB - Plant Service Water System (PSW) Installation	43	06-Nov-25 A	14-Feb-26	234	STB - Plant Service Water System (PSW) Installation																																		
Z3S3-4100	STB - DO Duct and dampers installation	43	06-Nov-25 A	14-Feb-26	20	STB - DO Duct and dampers installation																																		
Z3S3-4110	STB - Sludge infeed and outflow pipe installation	43	06-Nov-25 A	14-Feb-26	-3	STB - Sludge infeed and outflow pipe installation																																		
Z3S3-4130	STB - Centrate pipe installation	15	15-Dec-25 A	26-Feb-26	13	STB - Centrate pipe installation																																		
Z3S3-4140	STB - Ferric chloride dosing pipe installation	15	15-Dec-25 A	26-Feb-26	-1	STB - Ferric chloride dosing pipe installation																																		
BS Installation (ELV, Ventilation, FS, PD)																																								
Z3S3-2860	STB - BS Installation (ELV, Ventilation, FS, PD) @ -1.5mPD	98	01-Sep-25 A	26-Feb-26	249	STB - BS Installation (ELV, Ventilation, FS, PD) @ -1.5mPD																																		
STB E&M : Thickening Centrifuge Hall and Polymer Area @ +6.0mPD																																								
Polymer Preparation and Dosing System																																								
Z3S3-4180	STB - Polymer Transfer Pump and Dosing Pump c/w pipe, valves and fittings	22	29-Dec-25 A	28-Feb-26	11	STB - Polymer Transfer Pump and Dosing Pump c/w pipe, valves and fittings																																		
Sludge Thickening and Discharge System																																								
Z3S3-4230	STB - Thickening Centrifuge c/w pipe, valve and fittings x 3 nos	21	03-Nov-25 A	28-Feb-26	-3	STB - Thickening Centrifuge c/w pipe, valve and fittings x 3 nos																																		
Z3S3-4220	STB - Thickening Sludge Transfer Pump x 6 nos	19	28-Nov-25 A	28-Feb-26	829	STB - Thickening Sludge Transfer Pump x 6 nos																																		
Pipeworks Installation @ +6.0mPD																																								
Z3S3-4240	STB - Plant Service Water System (PSW) Installation	14	21-Jan-26 A	28-Feb-26	-3	STB - Plant Service Water System (PSW) Installation																																		
Z3S3-4250	STB - DO Duct and dampers installation	14	21-Jan-26 A	28-Feb-26	11	STB - DO Duct and dampers installation																																		
Z3S3-4260	STB - Ferric chloride dosing pipe installation	14	02-Mar-26	17-Mar-26	-3	STB - Ferric chloride dosing pipe installation																																		
BS Installation (ELV, Ventilation, FS, PD)																																								
Z3S3-4270	STB - BS Installation (ELV, Ventilation, FS, PD) @ +6mPD	98	26-Jun-25 A	26-Feb-26	831	STB - BS Installation (ELV, Ventilation, FS, PD) @ +6mPD																																		
STB E&M : Transformer Room @ +6.0mPD																																								
Z3S3-6390	STB - Termination Works (CLP sub-station to TX)	6	31-Jan-26	06-Feb-26	-10	STB - Termination Works (CLP sub-station to TX)																																		
Z3S3-6430	STB - Energization & SAT of Transformer	35	07-Feb-26	23-Mar-26	-10	STB - Energization & SAT of Transformer																																		
STB E&M : LV Switch Room and VFD Room @ +13.5mPD																																								
Z3S3-4340	STB - UPS System	21	31-Jan-26	27-Feb-26	0	STB - UPS System																																		
Z3S3-3720	STB - Energization & SAT of LVSB	12	12-Mar-26	23-Mar-26	-12	STB - Energization & SAT of LVSB																																		
Z3S3-4350	STB - Termination Works (TX to LVSB)	6	17-Mar-26	23-Mar-26	-10	STB - Termination Works (TX to LVSB)																																		
STB E&M : DOU3 @+13.5mPD																																								
Z3S3-2800	STB - DOU Equipment Installation	39	02-Dec-25 A	27-Jan-26 A		STB - DOU Equipment Installation																																		
Z3S3-4280	STB - GRP Main Duct Installation	26	08-Dec-25 A	26-Feb-26	-14	STB - GRP Main Duct Installation																																		
Z3S3-4290	STB - Leakage Test	58	16-Feb-26	14-Apr-26	-17	STB - Leakage Test																																		
Z3S3-4295	STB - Seeding for Bio-Tricking Filter of DOU3	58	02-Mar-26	28-Apr-26	-17	STB - Seeding for Bio-Tricking Filter of DOU3																																		
STB E&M : Installation and Set-Up for SCADA System																																								
Z3S3-2815	STB - Installation of SCADA System (calibration,cabling,termination)	45	31-Jan-26	27-Mar-26	-14	STB - Installation of SCADA System (calibration,cabling,termination)																																		
Z3S3-4370	STB - Set-Up for SCADA System (sys.mapping,network config.,GUI,PQEMS,IDEMS,CMOS)	45	28-Mar-26	26-May-26	129	STB - Set-Up for SCADA System (sys.mapping)																																		
STB E&M : Electrical works (Cable wiring, termination)																																								
Z3S3-2850	STB - Electrical works (Cable containment, cabling, LCP, termination)	25	20-Jan-26 A	28-Feb-26	-1	STB - Electrical works (Cable containment, cabling, LCP, termination)																																		
STB External Pipeworks																																								
Z3S7-2100	STB - Temporary system and associated pipeworks for Location E to STB	60	02-Feb-26	20-Apr-26	-4	STB - Temporary system and associated pipeworks for Location E to STB																																		
Z3S7-2120	STB - Temporary routing of power source for STB LVSB energization *for KD4	24	02-Feb-26	04-Mar-26	-4	STB - Temporary routing of power source for STB LVSB energization *for KD4																																		
STB : Testing & Commissioning																																								
Phase 1- STB Sub-System Physical Dry Check																																								
Z3S3-4420	STB - T&C - Electrical - Megger Test	23	24-Mar-26	23-Apr-26	-10	STB - T&C - Electrical - Megger Test																																		
Z3S3-4430	STB - T&C - SCADA- I/O Point Test	23	28-Mar-26	28-Apr-26	-14	STB - T&C - SCADA- I/O Point Test																																		
Z3S3-2910	STB - T&C - Mechanical / Electrical - General Installation Checking, Setting Out Checking, Physical	21	31-Mar-26	28-Apr-26	-14	STB - T&C - Mechanical / Electrical - General Installation Checking, Setting Out																																		
Phase 2 - STB Sub-System Dry Function Test (Function, Protection, Interlock)																																								
Z3S3-2920	STB - T&C - Jet Mixing System of Sludge Blank Tank and Thickening Sludge Holding Tank No.2	30	29-Apr-26	28-May-26	-16	STB - T&C - Jet Mixing System of Sludge Blank Tank and Thickening Sludge Holding Tank No.2																																		
Z3S3-4440	STB - T&C - Thickening Centrifuge Feed Pump c/w pipes and valves and fittings	30	29-Apr-26	28-May-26	-16	STB - T&C - Thickening Centrifuge Feed Pump c/w pipes and valves and fittings																																		
Z3S3-4450	STB - T&C - Digester Feed Pump c/w pipes and valves and fittings	30	29-Apr-26	28-May-26	-16	STB - T&C - Digester Feed Pump c/w pipes and valves and fittings																																		
Z3S3-4460	STB - T&C - Polymer Preparation and Dosing System	30	29-Apr-26	28-May-26	-16	STB - T&C - Polymer Preparation and Dosing System																																		
Z3S3-4470	STB - T&C - Sludge Thickening and Discharge System	30	29-Apr-26	28-May-26	-16	STB - T&C - Sludge Thickening and Discharge System																																		
Z3S3-4480	STB - T&C - DOU - 03 System	30	29-Apr-26	28-May-26	-16	STB - T&C - DOU - 03 System																																		
Zone 3 Middle Portion (Z3M)																																								
Demolition																																								
Existing SDT 1-4																																								
Z3S7-2160	Tanker-away scheme - Road Diversion on H2S/SD6 for Sheepiling of SD4-6	12	03-Dec-25 A	18-Dec-25		scheme - Road Diversion on H2S/SD6 for Sheepiling of SD4-6																																		
Sludge Digester No. 4-6 (SD4-6)																																								
SD4-6 : Foundation and ELS																																								
SD4-6 : Sheetpiling																																								
Z3S8SD-2035	Sludge Digester No. 4-6 - Near UC5/STB Road Diversion + Plant Mobilization and Trial for Sheet Pile Installation	12	03-Dec-25 A	18-Dec-25		Sludge Digester No. 4-6 - Near UC5/STB Road Diversion + Plant Mobilization and Trial for Sheet Pile Installation																																		
Z3S8SD-2485	Sludge Digester No. 4-6 - Sheet Piles Install (Zone B, 1690m2@ -24.5mPD)	56	16-Dec-25 A	19-May-26	-322	Sludge Digester No. 4-6 - Sheet Piles Install (Zone B, 1690m2@ -24.5mPD)																																		
Z3S8SD-2040	Sludge Digester No. 4-6 - Sheet Piles Install (Zone A, 1292 m2,@40m2/d/rig, 2 rig) UC East Side	22	19-Dec-25 A	07-Mar-26	-25	Sludge Digester No. 4-6 - Sheet Piles Install (Zone A, 1292 m2,@40m2/d/rig, 2 rig) UC East Side																																		
Z3S8SD-2330	Sludge Digester No. 4-6 - Sheet Piles Install (Zone C, preboring 22 *0.46 = 47no@1-1.3no/d, 1rigs)	47	09-Jan-26 A	31-Mar-26	-322	Sludge Digester No. 4-6 - Sheet Piles Install (Zone C, preboring 22 *0.46 = 47no@1-1.3no/d, 1rigs) common w																																		
Z3S8SD-2335	Sludge Digester No. 4-6 - Sheet Piles Install (Zone C, 1638m2 @-20.5mPD)	56	03-Feb-26	16-Apr-26	-322	Sludge Digester No. 4-6 - Sheet Piles Install (Zone C, 1638m2 @-20.5mPD)																																		
Z3S8SD-2480	Sludge Digester No. 4-6 - Sheet Piles Install (Zone B, preboring 22 *0.46 = 47nos@1-1.3no/d, 1rig)	47	09-Mar-26	07-May-26	-322	Sludge Digester No. 4-6 - Sheet Piles Install (Zone B, preboring 22 *0.46 = 47nos@1-1.3no/d, 1rig)																																		
Biogas Holder No. 2-4 (BH2-4)																																								
Biogas Holder No. 2-3 (BH2-3)																																								
BH2 - E&M Installation																																								
ATALZ3BH-2259	BH No. 2 - E&M Handover	0	20-Jan-26 A			◆ BH No. 2 - E&M Handover																																		
ATALZ3BH-2525	BH No. 2 - Material delivery and base preparation (plinth leveling and bitumen coating, drainage)	6	21-Jan-26 A	24-Feb-26	-26	BH No. 2 - Material delivery and base preparation (plinth leveling and bitumen coating, drainage)																																		
ATALZ3BH-2535	BH No. 2 - Tank base plate installation and welding	22	25-Feb-26	21-Mar-26	-26	BH No. 2 - Tank base plate installation and welding																																		
ATALZ3BH-2545	BH No. 2 - Jack installation and top ring installation	19	23-Mar-26	17-Apr-26	-25	BH No. 2 - Jack installation and top ring installation																																		
ATALZ3BH-2555	BH No. 2 - Roof, crown ring and roof handrail construction	41	18-Apr-26	06-Jun-26	-28	BH No. 2 - Roof, crown ring and roof handrail construction																																		
BH3 - E&M Installation																																								
ATALZ3BH-2725	BH No. 3 - E&M Handover	0	27-Jan-26 A			◆ BH No. 3 - E&M Handover																																		
Utility Corridor and Pipe Portal (UC/PP)																																								
Utility Corridor No. 2 (UC2)																																								
UC2 : Foundation and ELS																																								
Z3S2-4060	UC2 - Monitoring Installation	7	02-Apr-26	14-Apr-26	120	UC2 - Monitoring Installation																																		



■ Remaining Level of Effort
■ Actual Work
■ Remaining Work
■ Critical Remaining Work
◆ Milestone

Contract DC/2019/10 - YLEPP - Main Works for Stage 1 Monthly Progress Report No. 63- 3MRP (Jan 26)

Project ID : DWP/58_260212
 Layout : DC201910 MPR63-3MRP
 Page 7 of 8

Monthly Progress Report - 3MRP

Date	Revision	Checked	Approved
31-Jan-26			

Activity ID	Activity Name	Remaining Duration	BL Start (DE/2020/01 RPR33)	BL Finish (DE/2020/01 RPR33)	Start	Finish	Total Fbat	Activity % Complete	2026				
									Feb 46	Mar 47	Apr 48	May 49	
YLEPP - E&M Works for SDB, ADB & Renewable Energy Facilities for Stage1_3MRP													
Contract Data													
Starting Date & Completion Date													
CD-1020	Whole Contract Period (1650 days after starting date)	294	14-Jun-22	19-Dec-26	14-Jun-22 A	19-Dec-26	0	82.18%					
Access Date													
CD-AD1010	Early Access Date for Portion 1	0	01-Aug-25		01-Mar-26		723	0%					
CD-AD1020	Late Access to Portion 1 - Sludge Thickening Building (1578 calendar days from starting date)	221	13-Jun-22	07-Oct-26	13-Jun-22 A	07-Oct-26	502	85.99%					
CD-AD1090	Early Access Date for Portion 3	0	17-Aug-25		01-Mar-26		723	0%					
CD-AD1100	Late Access to Portion 3 - Sludge Dewatering Building (Within 1231 calendar days from starting date)	1	13-Jun-22	25-Oct-25	13-Jun-22 A	01-Mar-26	722	99.92%					
CD-AD1110	Late Access Date for Portion 3	0	25-Oct-25		01-Mar-26		723	0%					
CD-AD1130	Early Access Date for Portion 4	0	16-Dec-25		01-Mar-26		723	0%					
CD-AD1140	Late Access to Portion 4 - Administration Building (Within 1370 calendar days from starting date)	13	13-Jun-22	13-Mar-26	13-Jun-22 A	13-Mar-26	710	99.05%					
CD-AD1150	Late Access Date for Portion 4	0	13-Mar-26		13-Mar-26		711	0%					
CD-AD1160	Early Access to Portion 5 - Mainstream Bio-Reactor Building (Within 1346 calendar days from starting date)	17	13-Jun-22	17-Feb-26	13-Jun-22 A	17-Mar-26	706	98.74%					
CD-AD1170	Early Access Date for Portion 5	0	17-Feb-26		01-Mar-26		723	0%					
CD-AD1180	Late Access to Portion 5 - Mainstream Bio-Reactor Building (Within 1451 calendar days from starting date)	94	13-Jun-22	02-Jun-26	13-Jun-22 A	02-Jun-26	629	93.52%					
CD-AD1200	Early Access to Portion 6 - Primary Sedimentation Tanks (Within 1374 calendar days from starting date)	17	13-Jun-22	17-Mar-26	13-Jun-22 A	17-Mar-26	706	98.76%					
CD-AD1210	Early Access Date for Portion 6	0	17-Mar-26		17-Mar-26		707	0%					
CD-AD1220	Late Access to Portion 6 - Primary Sedimentation Tanks (Within 1520 calendar days from starting date)	163	13-Jun-22	10-Aug-26	13-Jun-22 A	10-Aug-26	560	89.28%					
Planned Date													
Planned Access Date													
PD-AD1000	Planned Early Access Date for Portion 1 - Sludge Thickening Building	0	31-Aug-25		01-Mar-26		223	0%					
PD-AD1040	Planned Early Access Date for Portion 3 - Sludge Dewatering Building	0	17-Aug-25		01-Mar-26		-232	0%					
PD-AD1050	Planned Late Access Date for Portion 3 - Sludge Dewatering Building	0	25-Oct-25		01-Mar-26		-232	0%					
PD-AD1060	Planned Early Access Date for Portion 4 - Administration Building	0	13-Jun-26		01-Mar-26		15	0%					
PD-AD1070	Planned Late Access Date for Portion 4 - Administration Building	0	13-Mar-26		13-Mar-26		3	0%					
PD-AD1080	Planned Early Access Date for Portion 5 - Mainstream Bio-Reactor Building	0	17-Feb-26		01-Mar-26		93	0%					
PD-AD1100	Planned Early Access Date for Portion 6 - Primary Sedimentation Tanks	0	17-Mar-26		17-Mar-26		165	0%					
PD-AD1120	Planned Early Access Date for CLPSS / 11kV Switchroom	0	31-Aug-25		01-Mar-26		172	0%					
PD-AD1130	Planned Late Access Date for CLPSS / 11kV Switchroom	0	01-Aug-25		01-Mar-26		172	0%					
Preliminaries													
BEAM Plus													
P-1190	Application to BEAM Society & provide Provisional Assessment (PA) report	146	01-May-25	29-Jul-25	15-Apr-25 A	24-Jul-26	-367	68.67%					
Section 1 - Comprises design, supply, delivery, installation, T&C of PV System of YLEPP													
Technical Submission & Approval													
DDA Submission													
PV System (DDA001A)													
S1-DDA-1030	Review & Approval of DDA Design of PV system	30	31-Aug-25	25-Sep-25	09-Jan-26 A	30-Mar-26	-79	62.96%					
PV System for canopy area (DDA001B)													
S1-DDA-1050	Review & Comment on DDA Design of PV system for Canopy Area	0			07-Jan-26 A	06-Feb-26 A		100%					
S1-DDA-1060	Re-submission of DDA Design of PV system for Canopy Area	20			07-Feb-26 A	20-Mar-26	122	52.38%					
S1-DDA-1070	Review & Approval of DDA Design of PV system for Canopy Area	21			21-Mar-26	10-Apr-26	122	0%					
Ramp and Shelter for PV System (DDA001C)													
S1-DDA-1080	Prepare & Submission of DDA Design of Ramp and Shelter for PV System	6			17-Sep-25 A	06-Mar-26	109	96.49%					
S1-DDA-1110	Review & Approval of DDA Design of Ramp and Shelter for PV System	55			07-Mar-26	30-Apr-26	109	0%					
Lighting Layout for Roof Floor in IW, PST, AGS, TTB, STB (DDA001D)													



File Name: DE/2020/01 3M 260228
 Layout: DE2001 (Progress -3M)_Feb 2026
 TASK filter: 3 Months Rolling (2001 YL).
 Page 1 of 13

- Remaining Work
- Critical Activity
- Actual Progress
- RP Rev.33
- ◆ RP Rev.33 MS
- ◆ Actual Milestone
- ◆ Milestone

Contract No. DE/2020/01
Yuen Long Effluent Polishing Plant - E&M Works for Sludge Dewatering Building, Administration Building and Renewable Energy
3 Months Rolling Programme (Based on RP Rev.33) as at 28 Feb 2026

Based on DE/2020/01 Revised Programme Rev.33			
Date	Revision	Checked	Approved
30-Nov-25	Rev.40	IM	JM
31-Dec-25	Rev.41	IM	JM
31-Jan-26	Rev.42	IM	JM
28-Feb-26	Rev.43	IM	JM

Activity ID	Activity Name	Remaining Duration	BL Start (DE2020/01 RPR33)	BL Finish (DE2020/01 RPR33)	Start	Finish	Total Float	Activity % Complete	2026			
									Feb 46	Mar 47	Apr 48	May 49
S1-DDA-1120	Prepare & Submission of DDA Design of Lighting Layout for Roof Floor in IW, PST, AGS, TTB, STB	46			01-Nov-25 A	15-Apr-26	33	72.29%				
S1-DDA-1130	Review & Comment on DDA Design of Lighting Layout for Roof Floor in IW, PST, AGS, TTB, STB	21			16-Apr-26	06-May-26	33	0%				
S1-DDA-1140	Re-submission of DDA Design of Lighting Layout for Roof Floor in IW, PST, AGS, TTB, STB	49			07-May-26	24-Jun-26	33	0%				
Plant & Material Submission												
<i>Smart Sun Tracking and Automatic Collapse and Expand Solar PV System (EL002)</i>												
S1-PMS-1150	Review & Approval of Smart Sun Tracking & Automatic Collapse & Expand Solar PV System	183			23-Oct-25 A	30-Aug-26	-181	41.35%				
<i>Support Frame/ System of PV panel (EL003)</i>												
S1-PMS-1100	Re-submission of Support Frame/ System of PV panel	0	10-Oct-25	08-Dec-25	10-Sep-25 A	29-Jan-26 A		100%				
S1-PMS-1110	Review & Approval of Support Frame/ System of PV panel	28	09-Dec-25	26-Feb-26	30-Jan-26 A	28-Mar-26	-48	51.72%				
SAT / T&C Procedure												
S1-SAT-1000	Prepare & Submission of SAT / T&C Procedure (with Test Form) of PV System	60	23-Feb-26	23-Apr-26	01-Mar-26	29-Apr-26	69	0%				
S1-SAT-1010	Review & Comment on SAT / T&C Procedure (with Test Form) of PV System	30	24-Apr-26	23-May-26	30-Apr-26	29-May-26	69	0%				
Manufacture, FAT & Delivery of Major Equipment (Inc. PV Panel, Power Optimizer, Switchgear, etc...)												
Portion 1 - Sludge Thickening Building												
S1-STB-MD-1000	Manufacture with FAT (1 months) & Delivery(1 month) of PV Panel - STB	61	20-Sep-25	20-Mar-26	20-Apr-26*	19-Jun-26	126	0%				
S1-STB-MD-1020	Manufacture with FAT (1 months) & Delivery(1 month) of Support Framework - STB	61	21-Dec-25	20-Mar-26	20-Apr-26*	19-Jun-26	112	0%				
Portion 2 - Inlet Works												
S1-IW-MD-1000	Manufacture with FAT (1 months) & Delivery(1 month) of PV Panel - IW	61	20-Sep-25	20-Mar-26	20-Apr-26*	19-Jun-26	39	0%				
S1-IW-MD-1020	Manufacture with FAT (months) & Delivery(1 month) of Support Framework - IW	61	21-Dec-25	20-Mar-26	20-Apr-26*	19-Jun-26	-70	0%				
CLP Substation												
S1-CLP-MD-1000	Manufacture with FAT (1 months) & Delivery(1 month) of PV Panel of PV Panel - CLP	61	20-Sep-25	20-Mar-26	20-Apr-26*	19-Jun-26	61	0%				
S1-CLP-MD-1020	Manufacture with FAT (1 months) & Delivery(1 month) of Support Framework - CLP	61	21-Dec-25	20-Mar-26	20-Apr-26*	19-Jun-26	61	0%				
Interfacing Works												
S1-IFW-1010	Design Submission with interface works for LV switchboard interfacing arrangement for Renewable Energy	90	26-Sep-25	24-Dec-25	31-Mar-26	28-Jun-26	-79	0%				
S1-IFW-1040	Cleansing point for PV panel cleansing at roof floor (STB, IW, PST, MBR, SDB & CLP)	90	26-Sep-25	24-Dec-25	31-Mar-26	28-Jun-26	-79	0%				
Section 2 - Comprises design, supply, delivery, installation, T&C of BS works of Admin. Building												
Technical Submission & Approval												
Subletting												
<i>Fire Services System</i>												
S2-ADB-SUB-1000	Tendering of FS System subcontractor	20	01-Dec-23	08-Oct-25	23-Nov-23 A	20-Mar-26	-197	97.64%				
S2-ADB-SUB-1010	Engagement of FS System subcontractor	31	02-Sep-25	01-Oct-25	21-Mar-26	20-Apr-26	-197	0%				
<i>MVAC System</i>												
S2-ADB-SUB-1020	Tendering of MV System subcontracting	20	01-Jun-24	09-Dec-25	24-May-24 A	20-Mar-26	-224	97%				
S2-ADB-SUB-1030	Engagement of MV System subcontracting	31	02-Dec-25	31-Dec-25	21-Mar-26	20-Apr-26	-224	0%				
S2-ADB-SUB-1200	Tendering of AC System subcontracting	20			13-Aug-25 A	20-Mar-26	-264	90.91%				
S2-ADB-SUB-1210	Engagement of AC System subcontracting	31			21-Mar-26	20-Apr-26	-264	0%				
<i>Electrical System</i>												
S2-ADB-SUB-1080	Tendering of Electrical System (BS)	41	04-Jul-24	30-Oct-25	04-Jun-24 A	10-Apr-26	-217	93.84%				
S2-ADB-SUB-1090	Engagement of Electrical System (BS)	30	02-Dec-25	31-Dec-25	11-Apr-26	10-May-26	-217	0%				
<i>P&D System</i>												
S2-ADB-SUB-1120	Tendering of P&D System	41	01-Oct-24	30-Dec-25	01-Sep-24 A	10-Apr-26	-95	93.02%				
S2-ADB-SUB-1130	Engagement of P&D System	30	01-Dec-25	30-Dec-25	11-Apr-26	10-May-26	-95	0%				
<i>CCTV, ACS and Security System</i>												
S2-ADB-SUB-1140	Tendering of CCTV, ACS & Security system	163	01-Oct-24	09-Apr-26	01-Sep-24 A	10-Aug-26	-207	69.13%				
<i>Radio Communication, Telephone & PA System</i>												
S2-ADB-SUB-1160	Tendering of Radio Communication, Telephone & PA System	163	01-Oct-24	09-Apr-26	01-Sep-24 A	10-Aug-26	-199	77.01%				
<i>PLC and SCADA System & Network integration</i>												



File Name: DE/2020/01 3M 260228
 Layout: DE2001 (Progress -3M)_Feb 2026
 TASK filter: 3 Months Rolling (2001 YL).
 Page 2 of 13

■ Remaining Work ◆ RP Rev.33 MS
■ Critical Activity ◆ Actual Milestone
◆ Milestone
■ Actual Progress
■ RP Rev.33

Contract No. DE/2020/01
Yuen Long Effluent Polishing Plant - E&M Works for Sludge Dewatering Building, Administration Building and Renewable Energy
3 Months Rolling Programme (Based on RP Rev.33) as at 28 Feb 2026

Based on DE/2020/01 Revised Programme Rev.33			
Date	Revision	Checked	Approved
30-Nov-25	Rev.40	IM	JM
31-Dec-25	Rev.41	IM	JM
31-Jan-26	Rev.42	IM	JM
28-Feb-26	Rev.43	IM	JM

Activity ID	Activity Name	Remaining Duration	BL Start (DE/2020/01 RPR33)	BL Finish (DE/2020/01 RPR33)	Start	Finish	Total Float	Activity % Complete	2026			
									Feb 46	Mar 47	Apr 48	May 49
S2-ADB-SUB-1180	Tendering of PLC, SCADA System, & Network Integration	20	21-Sep-24	29-Oct-25	21-Sep-24 A	20-Mar-26	-197	96.34%				
S2-ADB-SUB-1190	Engagement of PLC, SCADA System, & Network Integration	31	29-Sep-25	28-Oct-25	21-Mar-26	20-Apr-26	-197	0%				
DDA Submission												
Civil Requirement (DDA037)												
S2-ADB-CR-1080	Prepare & Submission of civil requirement & general arrangement drawing of Administration Building	19	01-May-25	15-Dec-25	01-Apr-25 A	19-Mar-26	-321	94.62%				
S2-ADB-CR-1090	Review & comment on civil requirement & general arrangement drawing of Administration Building	21	16-Nov-25	06-Dec-25	20-Mar-26	09-Apr-26	-321	0%				
S2-ADB-CR-1100	Re-submission of civil requirement & general arrangement drawing of Administration Building	275	07-Dec-25	05-Jan-26	10-Apr-26	09-Jan-27	-321	0%				
Fire Services System (DDA018)												
S2-ADB-DDA-1030	Approval of DDA Design of FS System	66	20-Nov-25	19-Dec-25	01-Nov-25 A	05-May-26	-132	64.52%				
MVAC System (with effluent cooling system) (DDA019)												
MV System (in SDB and ADB) (DDA019a)												
S2-ADB-DDA-1070	Approval of DDA Design of MV System	66	13-Dec-25	02-Jan-26	29-Nov-25 A	05-May-26	-127	58.23%				
AC system (AC system in SDB and with Effluent Cooling System in ADB) (DDA019b)												
S2-ADB-DDA-1560	Prepare & Submission of DDA Design of AC System (with effluent cooling system)	0	15-Oct-25	12-Jan-26	22-Oct-25 A	30-Jan-26 A		100%				
S2-ADB-DDA-1570	Review & comment on DDA Design of AC System (with effluent cooling system)	21	13-Jan-26	02-Feb-26	31-Jan-26 A	21-Mar-26	-127	58%				
S2-ADB-DDA-1580	Re-submission of DDA Design of AC System (with effluent cooling system)	24	03-Feb-26	03-Apr-26	22-Mar-26	14-Apr-26	-127	0%				
S2-ADB-DDA-1590	Approval of DDA Design of AC System (with effluent cooling system)	21	04-Apr-26	24-Apr-26	15-Apr-26	05-May-26	-127	0%				
Electrical System												
Electrical System - Single Line Diagram of Electrical System (DDA021A)												
S2-ADB-DDA-1150	Approval of DDA Design of Single Line Diagram	61	21-Aug-25	25-Sep-25	24-Dec-25 A	30-Apr-26	-205	52.34%				
Electrical System - LV Power Distribution System (DDA021B)												
S2-ADB-DDA-1320	Prepare & Submission of DDA Design of LV Power Distribution System	0	01-Apr-25	10-Jan-26	10-Dec-24 A	09-Feb-26 A		100%				
S2-ADB-DDA-1330	Review & comment on DDA Design of LV Power Distribution System	21	21-Sep-25	11-Oct-25	10-Feb-26 A	21-Mar-26	-235	47.5%				
S2-ADB-DDA-1340	Re-submission of DDA Design of LV Power Distribution System	49	12-Oct-25	30-Nov-25	22-Mar-26	09-May-26	-235	0%				
S2-ADB-DDA-1350	Approval of DDA Design of LV Power Distribution System	21	01-Dec-25	21-Dec-25	10-May-26	30-May-26	-235	0%				
Electrical System - Control Wiring Diagram for LV Switchboard (DDA021C)												
S2-ADB-DDA-1360	Prepare & Submission of DDA Design of Control Wiring Diagram for LV Switchboard	30	01-Jan-25	12-Oct-25	10-Dec-24 A	30-Mar-26	-235	93.27%				
S2-ADB-DDA-1370	Review & comment on DDA Design of Control Wiring Diagram for LV Switchboard	21	21-Sep-25	11-Oct-25	31-Mar-26	20-Apr-26	-235	0%				
S2-ADB-DDA-1380	Re-submission of DDA Design of Control Wiring Diagram for LV Switchboard	19	12-Oct-25	30-Nov-25	21-Apr-26	09-May-26	-235	0%				
S2-ADB-DDA-1390	Approval of DDA Design of Control Wiring Diagram for LV Switchboard	21	01-Dec-25	21-Dec-25	10-May-26	30-May-26	-235	0%				
Building Services Electrical System												
Building Services Electrical System - Lighting System of SDB & ADB (DDA024A)												
S2-ADB-DDA-1180	Re-submission of DDA Design of Lighting system	0	01-Jul-25	27-Dec-25	24-May-25 A	25-Feb-26 A		100%				
S2-ADB-DDA-1190	Approval of DDA Design of Lighting system	152	21-Dec-25	10-Jan-26	26-Feb-26 A	30-Jul-26	-108	1.94%				
Building Services Electrical System - Small Power System of SDB & ADB (DDA024B)												
S2-ADB-DDA-1470	Approval of DDA Design of Small Power System	152	05-Nov-25	25-Nov-25	28-Nov-25 A	30-Jul-26	-108	37.96%				
Building Services Electrical System - Cable Containment (DDA024C)												
S2-ADB-DDA-1500	Re-submission of DDA Design of Cable Containment	0	01-Sep-25	04-Nov-25	09-Aug-25 A	06-Feb-26 A		100%				
S2-ADB-DDA-1510	Approval of DDA Design of Cable Containment	152	05-Nov-25	25-Nov-25	07-Feb-26 A	30-Jul-26	-108	12.64%				
Building Services Electrical System - Lighting Control System (DDA024D)												
S2-ADB-DDA-1540	Re-submission of DDA Design of Lighting Control System	0	23-Aug-25	04-Nov-25	05-Jul-25 A	25-Feb-26 A		100%				
S2-ADB-DDA-1550	Approval of DDA Design of Lighting Control System	152	17-Sep-25	25-Nov-25	26-Feb-26 A	30-Jul-26	-108	0%				
Building Services Electrical System - Master Electrical Installation Details (DDA024E)												
S2-ADB-DDA-1610	Review & comment on DDA Design of Master Electrical Installation Details	0			24-Jan-26 A	13-Feb-26 A		100%				
S2-ADB-DDA-1620	Re-submission of DDA Design of Master Electrical Installation Details	23			14-Feb-26 A	23-Mar-26	-137	39.47%				
S2-ADB-DDA-1630	Approval of DDA Design of Master Electrical Installation Details	129			24-Mar-26	30-Jul-26	-137	0%				
P&D System (DDA025)												
S2-ADB-DDA-1220	Re-submission of DDA Design of P&D System	15	05-Jan-26	05-Mar-26	09-Jan-26 A	15-Mar-26	-97	83.52%				
S2-ADB-DDA-1230	Approval of DDA Design of P&D System	51	06-Mar-26	27-Mar-26	16-Mar-26	05-May-26	-97	0%				
CCTV, ACS & Security system (DDA026)												
S2-ADB-DDA-1260	Re-submission of DDA Design of CCTV, ACS & Security system	51	03-Apr-26	22-May-26	22-Oct-25 A	20-Apr-26	-197	71.82%				



File Name: DE/2020/01 3M 260228
Layout: DE2001 (Progress -3M)_Feb 2026
TASK filter: 3 Months Rolling (2001 YL).

■ Remaining Work ◆ RP Rev.33 MS
■ Critical Activity ◆ Actual Milestone
◆ Milestone
■ Actual Progress
■ RP Rev.33

Contract No. DE/2020/01
Yuen Long Effluent Polishing Plant - E&M Works for Sludge Dewatering Building,
Administration Building and Renewable Energy
3 Months Rolling Programme (Based on RP Rev.33) as at 28 Feb 2026

Based on DE/2020/01 Revised Programme Rev.33			
Date	Revision	Checked	Approved
30-Nov-25	Rev.40	IM	JM
31-Dec-25	Rev.41	IM	JM
31-Jan-26	Rev.42	IM	JM
28-Feb-26	Rev.43	IM	JM

Activity ID	Activity Name	Remaining Duration	BL Start (DE/2020/01 RPR33)	BL Finish (DE/2020/01 RPR33)	Start	Finish	Total Fbat	Activity % Complete	2026			
									Feb 46	Mar 47	Apr 48	May 49
S2-ADB-DDA-1270	Approval of DDA Design of CCTV, ACS & Security system	121	23-May-26	12-Jun-26	01-May-26	30-Aug-26	-207	0%				
Radio Communication System, Telephone System & PA System (DDA027)												
S2-ADB-DDA-1280	Prepare & Submission of DDA Design of Radio Communication, Telephone & PA System	51	01-May-25	19-Mar-26	27-Mar-25 A	20-Apr-26	-199	86.92%				
S2-ADB-DDA-1290	Review & comment on DDA Design of Radio Communication, Telephone & PA System	21	13-Feb-26	05-Mar-26	21-Apr-26	11-May-26	-199	0%				
S2-ADB-DDA-1300	Re-submission of DDA Design of Radio Communication, Telephone & PA System	89	06-Mar-26	29-Apr-26	12-May-26	08-Aug-26	-199	0%				
Plant & Material Submission												
MVAC System												
Dehumidifier (BS001) (Combined in ME020)												
S2-ADB-PMS-1000	Prepare & Submission of Dehumidifier	22	01-Feb-25	01-Jan-26	01-Oct-25 A	22-Mar-26	-263	87.28%				
S2-ADB-PMS-1010	Review & Approval of Dehumidifier	92	23-Oct-25	12-Nov-25	23-Mar-26	22-Jun-26	-73	0%				
Prefilter and After filter (BS002) (Combined in ME020)												
S2-ADB-PMS-1320	Prepare & Submission of Prefilter and After Filter	22			01-Oct-25 A	22-Mar-26	-73	85.14%				
S2-ADB-PMS-1330	Review & Approval of Prefilter and After Filter	92			23-Mar-26	22-Jun-26	-73	0%				
Axial/Propeller/Centrifugal/ Jet Fan (BS003)												
S2-ADB-PMS-1380	Re-submission of Axial/Propeller/Centrifugal/ Jet Fan	10			16-Dec-25 A	10-Mar-26	-224	88.24%				
S2-ADB-PMS-1390	Review & Approval of Axial/Propeller/Centrifugal/ Jet Fan	41			11-Mar-26	20-Apr-26	-224	0%				
Volume Control/Fire Damper, Louver, Griller and Air Ductwork (BS004)												
S2-ADB-PMS-1420	Re-submission of Volume Control/Fire Damper, Louver, Griller and Air Ductwork	9			10-Jan-26 A	09-Mar-26	-224	84.75%				
S2-ADB-PMS-1430	Review & Approval of Volume Control/Fire Damper, Louver, Griller and Air Ductwork	42			10-Mar-26	20-Apr-26	-224	0%				
Acoustic Silencer (BS005)												
S2-ADB-PMS-1460	Re-submission of Acoustic Silencer	10			07-Jan-26 A	10-Mar-26	-263	84.13%				
S2-ADB-PMS-1470	Review & Approval of Acoustic Silencer	41			11-Mar-26	20-Apr-26	-263	0%				
Absorption Chiller (BS006)												
S2-ADB-PMS-1510	Review & Approval of Absorption Chiller	51			24-Dec-25 A	20-Apr-26	-263	56.78%				
Outdoor and Indoor Unit (BS007)												
S2-ADB-PMS-1520	Prepare & Submission of Outdoor and indoor Unit	20			25-Oct-25 A	20-Mar-26	-293	80.58%				
S2-ADB-PMS-1530	Review & comment on Outdoor and indoor Unit	21			21-Mar-26	10-Apr-26	-293	0%				
S2-ADB-PMS-1540	Re-submission of Outdoor and indoor Unit	19			11-Apr-26	29-Apr-26	-293	0%				
S2-ADB-PMS-1550	Review & Approval of Outdoor and indoor Unit	21			30-Apr-26	20-May-26	-293	0%				
Air Ductwork and Accessories for MVAC System (BS027)												
S2-ADB-PMS-3320	Re-submission of Air Ductwork and Accessories for MVAC System	10			07-Jan-26 A	10-Mar-26	672	84.13%				
S2-ADB-PMS-3330	Review & Approval of Air Ductwork and Accessories for MVAC System	41			11-Mar-26	20-Apr-26	672	0%				
P&D System												
FRP Water Tank (BS008)												
S2-ADB-PMS-2860	Prepare & Submission of FRP Water Tank	41			18-Dec-25 A	10-Apr-26	-133	64.04%				
S2-ADB-PMS-2870	Review & comment on FRP Water Tank	21			11-Apr-26	01-May-26	-133	0%				
S2-ADB-PMS-2880	Re-submission of FRP Water Tank	19			02-May-26	20-May-26	-133	0%				
S2-ADB-PMS-2890	Review & Approval of FRP Water Tank	21			21-May-26	10-Jun-26	-133	0%				
Plumbing system Pump Set (BS009A)												
S2-ADB-PMS-2920	Re-submission of Plumbing system Pump Set	41			29-Nov-25 A	10-Apr-26	-133	55.43%				
S2-ADB-PMS-2930	Review & Approval of Plumbing system Pump Set	61			11-Apr-26	10-Jun-26	-133	0%				
Plumbing system Pump Set (EL-Panel) (BS009B)												
S2-ADB-PMS-3180	Prepare & Submission of Plumbing system Pump Set (EL-panel)	41			18-Dec-25 A	10-Apr-26	-133	64.04%				
S2-ADB-PMS-3190	Review & comment on Plumbing system Pump Set (EL-panel)	21			11-Apr-26	01-May-26	-133	0%				
S2-ADB-PMS-3200	Re-submission of Plumbing system Pump Set (EL-panel)	19			02-May-26	20-May-26	-133	0%				
S2-ADB-PMS-3210	Review & Approval of Plumbing system Pump Set (EL-panel)	21			21-May-26	10-Jun-26	-133	0%				
Plumbing System (Pressure Vessel) (BS011)												
S2-ADB-PMS-3000	Re-submission of Pneumatic Tank/ Pressure Vessel	41			06-Jan-26 A	10-Apr-26	-133	56.84%				
S2-ADB-PMS-3010	Review & Approval of Pneumatic Tank/ Pressure Vessel	61			11-Apr-26	10-Jun-26	-133	0%				
Pipes and Fittings for Plumbing System (BS013A)												
S2-ADB-PMS-3060	Prepare & Submission of Pipes and Fittings for Plumbing System	41			18-Dec-25 A	10-Apr-26	-133	64.04%				
S2-ADB-PMS-3070	Review & comment on Pipes and Fittings for Plumbing System	21			11-Apr-26	01-May-26	-133	0%				
S2-ADB-PMS-3080	Re-submission of Pipes and Fittings for Plumbing System	19			02-May-26	20-May-26	-133	0%				
S2-ADB-PMS-3090	Review & Approval of Pipes and Fittings for Plumbing System	21			21-May-26	10-Jun-26	-133	0%				
Pipes and Fittings for Drainage System (BS013B)												



File Name: DE/2020/01 3M 260228
 Layout: DE2001 (Progress -3M)_Feb 2026
 TASK filter: 3 Months Rolling (2001 YL).
 Page 4 of 13

■ Remaining Work ◆ RP Rev.33 MS
■ Critical Activity ◆ Actual Milestone
◆ Milestone
■ Actual Progress
■ RP Rev.33

Contract No. DE/2020/01
Yuen Long Effluent Polishing Plant - E&M Works for Sludge Dewatering Building,
Administration Building and Renewable Energy
3 Months Rolling Programme (Based on RP Rev.33) as at 28 Feb 2026

Based on DE/2020/01 Revised Programme Rev.33			
Date	Revision	Checked	Approved
30-Nov-25	Rev.40	IM	JM
31-Dec-25	Rev.41	IM	JM
31-Jan-26	Rev.42	IM	JM
28-Feb-26	Rev.43	IM	JM

Activity ID	Activity Name	Remaining Duration	BL Start (DE/2020/01 RP R33)	BL Finish (DE/2020/01 RP R33)	Start	Finish	Total Fbat	Activity % Complete	2026			
									Feb	Mar	Apr	May
S2-ADB-PMS-3350	Review & comment on Pipes and Fittings for Drainage System	0			14-Jan-26 A	30-Jan-26 A		100%	46	47	48	49
S2-ADB-PMS-3360	Re-submission of Pipes and Fittings for Drainage System	41			31-Jan-26 A	10-Apr-26	-133	45.33%				
S2-ADB-PMS-3370	Review & Approval of Pipes and Fittings for Drainage System	61			11-Apr-26	10-Jun-26	-133	0%				
Valves for Plumbing System (BS013C)												
S2-ADB-PMS-3380	Prepare & Submission of Valves for Plumbing System	41			18-Dec-25 A	10-Apr-26	-133	64.04%				
S2-ADB-PMS-3390	Review & comment on Valves for Plumbing System	21			11-Apr-26	01-May-26	-133	0%				
S2-ADB-PMS-3400	Re-submission of Valves for Plumbing System	19			02-May-26	20-May-26	-133	0%				
S2-ADB-PMS-3410	Review & Approval of Valves for Plumbing System	21			21-May-26	10-Jun-26	-133	0%				
Valves for Drainage System (BS013D)												
S2-ADB-PMS-3420	Prepare & Submission of Valves for Drainage System	41			18-Dec-25 A	10-Apr-26	-133	64.04%				
S2-ADB-PMS-3430	Review & comment on Valves for Drainage System	21			11-Apr-26	01-May-26	-133	0%				
S2-ADB-PMS-3440	Re-submission of Valves for Drainage System	19			02-May-26	20-May-26	-133	0%				
S2-ADB-PMS-3450	Review & Approval of Valves for Drainage System	21			21-May-26	10-Jun-26	-133	0%				
Drainage system Pump Set (Submersible Sewage pump) (BS015)												
S2-ADB-PMS-3160	Re-submission of Drainage system Pump Set (Submersible Sewage pump)	41			13-Dec-25 A	10-Apr-26	-218	65.55%				
S2-ADB-PMS-3170	Review & Approval of Drainage system Pump Set (Submersible Sewage pump)	61			11-Apr-26	10-Jun-26	-218	0%				
FS System												
Fire Service Pump Set (Fixed Sprinkler, Fire and Jockey Pumps) (BS016A)												
S2-ADB-PMS-1100	Re-submission of FS System - Fire Service Pump Set	0	07-Oct-25	14-Dec-25	20-Nov-25 A	27-Feb-26 A		100%				
S2-ADB-PMS-1110	Review & Approval of FS System - Fire Service Pump Set	102	15-Dec-25	04-Jan-26	28-Feb-26 A	10-Jun-26	-245	0.97%				
Fire Service Pump Set (EL-Panel) (BS016B)												
S2-ADB-PMS-3220	Prepare & Submission of FS System - Fire Service Pump Set (EL Panel)	41			01-Nov-25 A	10-Apr-26	-223	57.29%				
S2-ADB-PMS-3230	Review & comment on FS System - Fire Service Pump Set (EL Panel)	21			11-Apr-26	01-May-26	-223	0%				
S2-ADB-PMS-3240	Re-submission of FS System - Fire Service Pump Set (EL Panel)	19			02-May-26	20-May-26	-223	0%				
S2-ADB-PMS-3250	Review & Approval of FS System - Fire Service Pump Set (EL Panel)	21			21-May-26	10-Jun-26	-223	0%				
Pipes, Fittings, Valves for Fire Service Installation (BS017)												
S2-ADB-PMS-3260	Prepare & Submission of Pipe, fittings, valves for FS Installation	41			01-Nov-25 A	10-Apr-26	-245	74.53%				
S2-ADB-PMS-3270	Review & comment on Pipe, fittings, valves for FS Installation	21			11-Apr-26	01-May-26	-245	0%				
S2-ADB-PMS-3280	Re-submission of Pipe, fittings, valves for FS Installation	19			02-May-26	20-May-26	-245	0%				
S2-ADB-PMS-3290	Review & Approval of Pipe, fittings, valves for FS Installation	21			21-May-26	10-Jun-26	-245	0%				
Radio Communication, Telephone System and Public Address System (BS024)												
S2-ADB-PMS-1200	Prepare & Submission of Radio Communication, Telephone System and Public Address System	132	01-May-25	28-Nov-25	27-Mar-25 A	10-Jul-26	-113	62.18%				
CCTV, ACS & Security System (BS025)												
S2-ADB-PMS-1310	Review & Approval of CCTV, ACS & Security System	224	06-Oct-25	26-Oct-25	22-Oct-25 A	10-Oct-26	-178	36.72%				
Method Statement												
Fire Services System												
S2-ADB-MS-1000	Prepare & Submission of method statement of installation of FS system	25	20-Dec-25	13-Jan-26	06-May-26	30-May-26	-132	0%				
MVAC System (with effluent cooling system)												
S2-ADB-MS-1040	Prepare & Submission of method statement of installation of MVAC System (with effluent cooling system)	30	25-Apr-26	24-May-26	06-May-26	04-Jun-26	-127	0%				
Manufacture, FAT & Delivery of Major Equipment												
S2-ADB-MD-1050	Manufacture with FAT(4 months) & Delivery(1 month) of MV System	215	01-Mar-26	01-Oct-26	20-Apr-26	20-Nov-26	-224	0%				
S2-ADB-MD-1060	Manufacture with FAT(1 months) & Delivery(1 month) of AC System	123			20-May-26	19-Sep-26	-293	0%				
Interfacing Works												
S2-ADB-IFW-1000	Interface Works with Other Contract (including: Slab / Wall openings, Concrete Plinths, Cast-in Item, etc)	336	15-Dec-22	04-Jul-24	01-Apr-25 A	30-Jan-27	-321	49.85%				
S2-ADB-IFW-1020	Design Submission with Interface Works on Provision in LV Switchroom in ADB	90	01-Aug-25	29-Oct-25	01-Mar-26	29-May-26	-234	0%				
S2-ADB-IFW-1030	Design Submission with Interface Works on Effluent Supply for Effluent Cooling System	37	01-May-25	04-Oct-25	19-Apr-25 A	06-Apr-26	4	89.52%				
S2-ADB-IFW-1040	Design Submission with Interface Works on Street Fire Hydrant Water Main & Pumping System	90	17-Aug-25	14-Nov-25	01-Mar-26	29-May-26	-68	0%				
S2-ADB-IFW-1050	Design Submission with Interface Works on Plumbing & Drainage	86	01-Dec-25	10-Jan-27	15-Feb-25 A	25-May-26	-117	81.51%				
S2-ADB-IFW-1060	Design Submission with Interface Works on BEAM Plus	90	14-Aug-25	11-Nov-25	26-Apr-26	24-Jul-26	-367	0%				
Section 3 - Design, supply, delivery, installation, T&C of Sludge Dewatering and Drying System												



File Name: DE/2020/01 3M 260228
 Layout: DE2001 (Progress -3M)_Feb 2026
 TASK filter: 3 Months Rolling (2001 YL).
 Page 5 of 13

■ Remaining Work ◆ RP Rev.33 MS
■ Critical Activity ◆ Actual Milestone
◆ Milestone
■ Actual Progress
■ RP Rev.33

Contract No. DE/2020/01
Yuen Long Effluent Polishing Plant - E&M Works for Sludge Dewatering Building,
Administration Building and Renewable Energy
3 Months Rolling Programme (Based on RP Rev.33) as at 28 Feb 2026

Based on DE/2020/01 Revised Programme Rev.33			
Date	Revision	Checked	Approved
30-Nov-25	Rev.40	IM	JM
31-Dec-25	Rev.41	IM	JM
31-Jan-26	Rev.42	IM	JM
28-Feb-26	Rev.43	IM	JM

Activity ID	Activity Name	Remaining Duration	BL Start (DE/2020/01 RPR33)	BL Finish (DE/2020/01 RPR33)	Start	Finish	Total Fbat	Activity % Complete	2026					
									Feb 46	Mar 47	Apr 48	May 49		
Technical Submission & Approval														
Subletting														
Sludge Dewatering System														
S3-SDB-SUB-1120	Tendering of Instrument Air System	15	22-Aug-25	20-Oct-25	30-Sep-25 A	15-Mar-26	26	91.02%						
S3-SDB-SUB-1130	Engagement of Instrument Air System	30	21-Oct-25	19-Nov-25	16-Mar-26	14-Apr-26	26	0%						
S3-SDB-SUB-1170	Engagement of Wet Sludge Hopper and Dried Sludge Silo	53	01-Oct-25	30-Oct-25	27-Jan-26 A	22-Apr-26	-229	38.37%						
Sludge Conveyors and Discharge System														
S3-SDB-SUB-1190	Engagement of Sludge Conveyors	15	27-Sep-25	26-Oct-25	01-Dec-25 A	15-Mar-26	-86	85.71%						
Polyelectrolyte Preparation, Mixing, Transfer, Storage and Dosing System														
S3-SDB-SUB-1210	Engagement of PPU, Tank, Mixer	41	28-Sep-25	27-Oct-25	15-Jan-26 A	10-Apr-26	-147	52.33%						
S3-SDB-SUB-1230	Engagement of Polymer Transfer Pumps, Dosing Pumps, DSHT Drain Pump	132	31-Oct-25	29-Nov-25	15-Jan-26 A	10-Jul-26	-238	25.42%						
Sludge Heating System														
S3-SDB-SUB-1310	Engagement of Heat Exchanger and Recirculation System	20	14-Sep-25	13-Oct-25	25-Oct-25 A	20-Mar-26	-12	86.39%						
Exhaust Gas Treatment System														
S3-SDB-SUB-1330	Engagement of SCR, Chemical Dosing System, Flue Gas Stacks	41	27-Sep-25	26-Oct-25	01-Dec-25 A	10-Apr-26	-107	68.7%						
Air Purifying System with Disinfection														
S3-SDB-SUB-1340	Tendering of Air Purification System	53	04-Nov-25	02-Jan-26	10-Jan-26 A	22-Apr-26	-200	48.54%						
S3-SDB-SUB-1350	Engagement of Air Purification System	30	03-Jan-26	01-Feb-26	23-Apr-26	22-May-26	-200	0%						
Biogas Pre-treatment System														
S3-SDB-SUB-1390	Engagement of Biogas Pre-treatment System	0	14-Sep-25	13-Oct-25	11-Dec-25 A	29-Jan-26 A		100%						
Gas Detection System														
S3-SDB-SUB-1400	Tendering of Gas Detection System	41	04-Dec-25	01-Feb-26	18-Aug-25 A	10-Apr-26	12	82.63%						
S3-SDB-SUB-1410	Engagement of Gas Detection System	30	02-Feb-26	01-Mar-26	11-Apr-26	10-May-26	12	0%						
Vehicle Access Control System														
S3-SDB-SUB-1420	Tendering of Vehicle Access Control System	163	10-Jan-26	10-Mar-26	13-Dec-25 A	10-Aug-26	-190	0%						
CMMS and IDMS														
S3-SDB-SUB-1440	Tendering of CMMS and IDMS	41	25-Sep-25	23-Nov-25	25-Sep-25 A	10-Apr-26	-217	66.12%						
S3-SDB-SUB-1450	Engagement of CMMS and IDMS	30	24-Nov-25	23-Dec-25	11-Apr-26	10-May-26	-217	0%						
Power Quality and Energy Management System (PQEMS)														
S3-SDB-SUB-1460	Tendering of PQEMS	41	01-Aug-25	29-Sep-25	31-Jul-25 A	10-Apr-26	-217	83.86%						
S3-SDB-SUB-1470	Engagement of PQEMS	30	29-Sep-25	28-Oct-25	11-Apr-26	10-May-26	-217	0%						
Control, Monitoring and Operation System (CMO)														
S3-SDB-SUB-1500	Tendering of CMO	60	04-Feb-26	04-Apr-26	24-Mar-26*	22-May-26	-12	0%						
S3-SDB-SUB-1510	Engagement of CMO	31	05-Apr-26	04-May-26	23-May-26	22-Jun-26	-12	0%						
DDA Submission														
Civil Requirement														
Sludge Dewatering Building (DDA036)														
Loading & unloading Level (DDA036a) (Expanded to separate submission DDA-036a1 and DDA-036a2)														
Loading & unloading Level - Walls and Ceiling (DDA036a2)														
S3-SDB-CR-2280	Prepare & Submission of Plant Layout & Civil Requirements Drawings for SDB (Loading & Unloading level - Walls & Ceiling)	0			12-Dec-25 A	05-Feb-26 A		100%						
S3-SDB-CR-2310	Approval of Plant Layout & Civil Requirements Drawings for SDB (Loading & Unloading level - Walls & Ceiling)	30			06-Feb-26 A	30-Mar-26	-262	43.4%						
Ground and First Level (DDA036b)														
S3-SDB-CR-2100	Re-submission of civil requirement & general arrangement drawing of SDB (Ground & First level)	0	02-Nov-25	01-Dec-25	13-Dec-25 A	16-Feb-26 A		100%						
S3-SDB-CR-2110	Approval of civil requirement & general arrangement drawing of SDB (Ground & First level)	41	02-Dec-25	22-Dec-25	01-Mar-26	10-Apr-26	682	0%						
Roof Level (DDA036c)														
S3-SDB-CR-2140	Re-submission of civil requirement & general arrangement drawing of SDB (Roof Level)	9	22-Nov-25	21-Dec-25	20-Dec-25 A	09-Mar-26	-273	88.75%						
S3-SDB-CR-2150	Approval of civil requirement & general arrangement drawing of SDB (Roof Level)	32	22-Dec-25	11-Jan-26	10-Mar-26	10-Apr-26	-273	0%						
Site Wide Cable Duct System (DDA038)														
S3-SDB-CR-2070	Approval of civil requirement & general arrangement drawing of Site Wide Cable Duct System	20	10-Oct-25	30-Oct-25	24-Dec-25 A	20-Mar-26	-254	77.01%						
Sludge Mixing System (DDA003)														
S3-SDB-DDA-1030	Approval of DDA Design of Sludge Mixing System	61	26-Jun-25	03-Mar-26	27-Sep-25 A	30-Apr-26	-190	71.76%						



File Name: DE/2020/01 3M 260228
 Layout: DE2001 (Progress -3M)_Feb 2026
 TASK filter: 3 Months Rolling (2001 YL).
 Page 6 of 13

■ Remaining Work ◆ RP Rev.33 MS
■ Critical Activity ◆ Actual Milestone
◆ Milestone
■ Actual Progress
■ RP Rev.33

Contract No. DE/2020/01
Yuen Long Effluent Polishing Plant - E&M Works for Sludge Dewatering Building, Administration Building and Renewable Energy
3 Months Rolling Programme (Based on RP Rev.33) as at 28 Feb 2026

Based on DE/2020/01 Revised Programme Rev.33			
Date	Revision	Checked	Approved
30-Nov-25	Rev.40	IM	JM
31-Dec-25	Rev.41	IM	JM
31-Jan-26	Rev.42	IM	JM
28-Feb-26	Rev.43	IM	JM

Activity ID	Activity Name	Remaining Duration	BL Start (DE/2020/01 RPR33)	BL Finish (DE/2020/01 RPR33)	Start	Finish	Total Fbat	Activity % Complete	2026				
									Feb 46	Mar 47	Apr 48	May 49	
Sludge Dewatering and Drying System													
Sludge Dewatering System (Centrifuge, Centrifuge Feed Pump) (DDA004A)													
S3-SDB-DDA-1110	Approval of DDA Design of Centrifuge and Centrifuge Feed Pump	61	27-Jul-25	06-Jul-26	28-Jun-25 A	30-Apr-26	-188	80.13%					
Sludge Drying System (Dryer's Conveyor and Condensation System) (DDA004B)													
S3-SDB-DDA-2470	Approval of DDA Design of Sludge Drying System	102	01-Apr-25	06-Nov-25	29-Aug-25 A	10-Jun-26	-229	64.34%					
Sludge Handling and Dynamic Mixing System (Hopper, Diverters, Silo, Dynamic Sludge Mixer) (DDA004C)													
S3-SDB-DDA-2510	Approval of DDA Design of Hopper, Diverters, Silo and Dynamic Sludge Mixer	102	31-Aug-25	29-Oct-25	09-Aug-25 A	10-Jun-26	-229	66.67%					
Sludge Conveying and Discharge System (DDA005)													
S3-SDB-DDA-1150	Approval of DDA Design of Sludge Conveying & Discharge System	102	30-Nov-25	20-Dec-25	29-Nov-25 A	10-Jun-26	-211	47.42%					
Polyelectrolyte Preparation, Mixing, Transferring, Storage and Dosing System (DDA006)													
S3-SDB-DDA-1190	Approval of DDA Design of Polyelectrolyte Preparation, Mixing, Transferring, Storage & Dosing System	102	07-Jun-25	19-May-26	31-May-25 A	10-Jun-26	-231	72.87%					
Centrate/Filtrate Collection System (DDA007)													
S3-SDB-DDA-1220	Re-submission of DDA Design of Centrate/Filtrate Collection System	51	04-Feb-26	25-Mar-26	13-Dec-25 A	20-Apr-26	-170	34.62%					
S3-SDB-DDA-1230	Approval of DDA Design of Centrate/Filtrate Collection System	51	26-Mar-26	15-Apr-26	21-Apr-26	10-Jun-26	-170	0%					
Steam Boiler System (DDA008)													
S3-SDB-DDA-1270	Approval of DDA Design of Steam Boiler System	102	31-Oct-25	20-Nov-25	23-Dec-25 A	10-Jun-26	-170	40%					
Sludge Heating System (DDA009)													
S3-SDB-DDA-1280	Prepare & Submission of DDA Design of Sludge Heating System	0	02-May-25	07-Oct-25	15-Apr-25 A	30-Jan-26 A		100%					
S3-SDB-DDA-1290	Review & comment on DDA Design of Sludge Heating System	21	21-Sep-25	11-Oct-25	31-Jan-26 A	21-Mar-26	-224	58%					
S3-SDB-DDA-1300	Re-submission of DDA Design of Sludge Heating System	60	12-Oct-25	30-Nov-25	22-Mar-26	20-May-26	-224	0%					
S3-SDB-DDA-1310	Approval of DDA Design of Sludge Heating System	21	01-Dec-25	21-Dec-25	21-May-26	10-Jun-26	-224	0%					
CHP System (DDA012)													
S3-SDB-DDA-1400	Prepare & Submission of DDA Design of CHP Generating System	0	21-Jun-25	22-Nov-25	09-May-25 A	30-Jan-26 A		100%					
S3-SDB-DDA-1410	Review & comment on DDA Design of CHP Generating System	21	10-Nov-25	30-Nov-25	31-Jan-26 A	21-Mar-26	-170	58%					
S3-SDB-DDA-1420	Re-submission of DDA Design of CHP Generating System	60	01-Dec-25	19-Jan-26	22-Mar-26	20-May-26	-170	0%					
S3-SDB-DDA-1430	Approval of DDA Design of CHP Generating System	21	20-Jan-26	09-Feb-26	21-May-26	10-Jun-26	-170	0%					
Exhaust Gas Treatment System (DDA013)													
S3-SDB-DDA-1440	Prepare & Submission of DDA Design of Exhaust Gas Treatment System	0	01-Jun-25	02-Nov-25	09-May-25 A	28-Jan-26 A		100%					
S3-SDB-DDA-1450	Review & comment on DDA Design of Exhaust Gas Treatment System	21	11-Oct-25	31-Oct-25	29-Jan-26 A	21-Mar-26	-150	59.62%					
S3-SDB-DDA-1460	Re-submission of DDA Design of Exhaust Gas Treatment System	60	01-Nov-25	20-Dec-25	22-Mar-26	20-May-26	-150	0%					
S3-SDB-DDA-1470	Approval of DDA Design of Exhaust Gas Treatment System	21	21-Dec-25	10-Jan-26	21-May-26	10-Jun-26	-150	0%					
Deodorisation Unit/System (DDA015)													
S3-SDB-DDA-1550	Approval of DDA Design of Deodorisation Unit/System	61	28-Sep-25	15-Apr-26	30-Apr-25 A	30-Apr-26	-195	83.33%					
Air Purifier System with Disinfection (DDA016)													
S3-SDB-DDA-1580	Re-submission of DDA Design of Air Purifier System with Disinfection	15	09-Mar-26	07-May-26	20-Dec-25 A	15-Mar-26	-106	82.56%					
S3-SDB-DDA-1590	Approval of DDA Design of Air Purifier System with Disinfection	87	08-May-26	28-May-26	16-Mar-26	10-Jun-26	-106	0%					
Lifting Appliance (DDA017)													
S3-SDB-DDA-1620	Re-submission of DDA Design of Lifting Appliance	15	02-Dec-25	20-Jan-26	17-Jan-26 A	15-Mar-26	-320	74.14%					
S3-SDB-DDA-1630	Approval of DDA Design of Lifting Appliance	87	21-Jan-26	10-Feb-26	16-Mar-26	10-Jun-26	-320	0%					
Emergency Generator Set (DDA023)													
S3-SDB-DDA-1670	Approval of DDA Design of Emergency Generator System	152	12-Mar-26	01-Apr-26	24-Jan-26 A	30-Jul-26	-368	19.15%					
PLC and SCADA System, and Network Integration (DDA035)													
System Architecture Drawing and I/O Schedule (DDA035a)													
S3-SDB-DDA-1740	Re-submission of System Architecture Drawing and I/O Schedule	18	06-Nov-25	09-Jan-26	11-Nov-25 A	18-Mar-26	-207	85.94%					
S3-SDB-DDA-1750	Approval of System Architecture Drawing and I/O Schedule	134	10-Jan-26	30-Jan-26	19-Mar-26	30-Jul-26	-207	0%					
SCADA Panels GA, Schematic Drawings and Equipment Layout Plan (DDA035b)													
S3-SDB-DDA-2880	Prepare & Submission of SCADA Panels GA, Schematic Drawings and Equipment Layout Plan	28			01-Oct-25 A	28-Mar-26	-386	84.36%					
S3-SDB-DDA-2890	Review & comment on SCADA Panels GA, Schematic Drawings and Equipment Layout Plan	21			29-Mar-26	18-Apr-26	-386	0%					
S3-SDB-DDA-2900	Re-submission of SCADA Panels GA, Schematic Drawings and Equipment Layout Plan	82			19-Apr-26	09-Jul-26	-386	0%					
HMI Graphics Design (DDA035c)													
S3-SDB-DDA-2920	Prepare & Submission of HMI Graphics Design	20			01-Oct-25 A	20-Mar-26	-330	88.3%					
S3-SDB-DDA-2930	Review & comment on HMI Graphics Design	21			21-Mar-26	10-Apr-26	-330	0%					
S3-SDB-DDA-2940	Re-submission of HMI Graphics Design	213			11-Apr-26	09-Nov-26	-330	0%					



File Name: DE/2020/01 3M 260228
 Layout: DE2001 (Progress -3M)_Feb 2026
 TASK filter: 3 Months Rolling (2001 YL).
 Page 7 of 13

Remaining Work	RP Rev.33 MS
Critical Activity	Actual Milestone
Milestone	
Actual Progress	
RP Rev.33	

Contract No. DE/2020/01
Yuen Long Effluent Polishing Plant - E&M Works for Sludge Dewatering Building, Administration Building and Renewable Energy
3 Months Rolling Programme (Based on RP Rev.33) as at 28 Feb 2026

Based on DE/2020/01 Revised Programme Rev.33			
Date	Revision	Checked	Approved
30-Nov-25	Rev.40	IM	JM
31-Dec-25	Rev.41	IM	JM
31-Jan-26	Rev.42	IM	JM
28-Feb-26	Rev.43	IM	JM

Activity ID	Activity Name	Remaining Duration	BL Start (DE/2020/01 RPR33)	BL Finish (DE/2020/01 RPR33)	Start	Finish	Total Fbat	Activity % Complete	2026				
									Feb 46	Mar 47	Apr 48	May 49	
Gas Detection System (DDA028)													
S3-SDB-DDA-1780	Re-submission of Gas Detection System	51	03-Apr-26	22-May-26	18-Oct-25 A	20-Apr-26	-230	72.43%					
S3-SDB-DDA-1790	Approval of Gas Detection System	132	23-May-26	12-Jun-26	21-Apr-26	30-Aug-26	-230	0%					
Control, Monitoring and Operation (CMO) System (DDA034)													
S3-SDB-DDA-1800	Prepare & Submission of CMO System	15	01-Jun-25	23-Nov-25	23-Apr-25 A	15-Mar-26	-101	95.41%					
S3-SDB-DDA-1810	Review & comment on CMO System	21	05-Jun-26	25-Jun-26	16-Mar-26	05-Apr-26	-101	0%					
S3-SDB-DDA-1820	Re-submission of CMO System	146	26-Jun-26	29-Aug-26	06-Apr-26	29-Aug-26	-101	0%					
Process Instrumentation System (DDA033)													
S3-SDB-DDA-1870	Approval of PIS System	0	23-Aug-25	20-Nov-25	19-Dec-25 A	11-Feb-26 A		100%					
Vehicle Access Control System (DDA029)													
S3-SDB-DDA-1900	Re-submission of Vehicle Access Control System	51	06-Mar-26	09-May-26	18-Oct-25 A	20-Apr-26	-179	72.43%					
S3-SDB-DDA-1910	Approval of Vehicle Access Control System	132	10-May-26	30-May-26	02-May-26	10-Sep-26	-190	0%					
Computerised Maint. & Management Sys(CMMS) (DDA030)													
S3-SDB-DDA-1920	Prepare & Submission of CMMS	9	01-May-25	27-Feb-26	27-Mar-25 A	09-Mar-26	-134	97.41%					
S3-SDB-DDA-1930	Review & comment on CMMS	21	24-Jan-26	13-Feb-26	10-Mar-26	30-Mar-26	-134	0%					
S3-SDB-DDA-1940	Re-submission of CMMS	57	14-Feb-26	04-Apr-26	31-Mar-26	26-May-26	-134	0%					
S3-SDB-DDA-1950	Approval of CMMS	35	05-Apr-26	25-Apr-26	27-May-26	30-Jun-26	-134	0%					
Power Quality and Energy Management System (PQEMS) (DDA032)													
System Architecture Drawing (DDA032a)													
S3-SDB-DDA-2030	Approval of PQEMS - System Architecture Drawing	152	10-Jan-26	30-Jan-26	21-Jan-26 A	30-Jul-26	-174	20.42%					
PQEMS Panels GA, Schematic Drawings and Equipment Layout Plan (DDA032b)													
S3-SDB-DDA-2960	Prepare & Submission of PQEMS Panels GA, Schematic Drawings and Equipment Layout Plan	0			23-Oct-25 A	13-Feb-26 A		100%					
S3-SDB-DDA-2970	Review & comment on PQEMS Panels GA, Schematic Drawings and Equipment Layout Plan	6			14-Feb-26 A	06-Mar-26	-174	71.43%					
S3-SDB-DDA-2980	Re-submission of PQEMS Panels GA, Schematic Drawings and Equipment Layout Plan	125			07-Mar-26	09-Jul-26	-174	0%					
Fire Services System (DDA018)													
S3-SDB-DDA-2070	Approval of DDA Design of FS System	66	11-Nov-25	01-Dec-25	01-Nov-25 A	05-May-26	-248	64.52%					
MVAC System (with effluent cooling system) (DDA019)													
MV System (in SDB and ADB) (DDA019a)													
S3-SDB-DDA-2110	Approval of DDA Design of MV System	66	13-Dec-25	02-Jan-26	29-Nov-25 A	05-May-26	-192	58.23%					
AC system (AC system in SDB and with Effluent Cooling System in ADB) (DDA019b)													
S3-SDB-DDA-2820	Prepare & Submission of DDA Design of AC System (with effluent cooling system)	0	15-Oct-25	12-Jan-26	22-Oct-25 A	30-Jan-26 A		100%					
S3-SDB-DDA-2830	Review & comment on DDA Design of AC System (with effluent cooling system)	21	13-Jan-26	02-Feb-26	31-Jan-26 A	21-Mar-26	-237	58%					
S3-SDB-DDA-2840	Re-submission of DDA Design of AC System (with effluent cooling system)	24	03-Feb-26	03-Apr-26	22-Mar-26	14-Apr-26	-237	0%					
S3-SDB-DDA-2850	Approval of DDA Design of AC System (with effluent cooling system)	21	04-Apr-26	24-Apr-26	15-Apr-26	05-May-26	-237	0%					
Absorption Chiller System (Absorption Chiller in Sludge Dewatering Building) (DDA019c)													
S3-SDB-DDA-3050	Review & comment on DDA Design of Absorption Chiller System (Absorption Chiller in Sludge Dewatering Building)	0			24-Dec-25 A	04-Feb-26 A		100%					
S3-SDB-DDA-3060	Re-submission of DDA Design of Absorption Chiller System (Absorption Chiller in Sludge Dewatering Building)	30			05-Feb-26 A	30-Mar-26	-258	44.44%					
S3-SDB-DDA-3070	Approval of DDA Design of Absorption Chiller System (Absorption Chiller in Sludge Dewatering Building)	36			31-Mar-26	05-May-26	-258	0%					
P&D System (DDA025)													
S3-SDB-DDA-2140	Re-submission of DDA Design of P&D System	15	06-Mar-26	04-May-26	09-Jan-26 A	15-Mar-26	-192	77.27%					
S3-SDB-DDA-2150	Approval of DDA Design of P&D System	51	05-May-26	25-May-26	16-Mar-26	05-May-26	-192	0%					
Electrical System													
Electrical System - Single Line Diagram of Electrical System (DDA021A)													
S3-SDB-DDA-2190	Approval of DDA Design of Single Line Diagram	61	21-Aug-25	18-Nov-25	22-Oct-25 A	30-Apr-26	-295	68.06%					
Electrical System - LV Power Distribution System (DDA021B)													
S3-SDB-DDA-2520	Prepare & Submission of DDA Design of LV Power Distribution System	0	01-Feb-25	12-Nov-25	10-Dec-24 A	09-Feb-26 A		100%					
S3-SDB-DDA-2530	Review & comment on DDA Design of LV Power Distribution System	21	21-Sep-25	11-Oct-25	10-Feb-26 A	21-Mar-26	-233	47.5%					
S3-SDB-DDA-2540	Re-submission of DDA Design of LV Power Distribution System	49	12-Oct-25	29-Nov-25	22-Mar-26	09-May-26	-233	0%					
S3-SDB-DDA-2550	Approval of DDA Design of LV Power Distribution System	21	30-Nov-25	20-Dec-25	10-May-26	30-May-26	-233	0%					
Electrical System - Control Wiring Diagram for LV Switchboard (DDA021C)													
S3-SDB-DDA-2560	Prepare & Submission of DDA Design of Control Wiring Diagram	30	01-Feb-25	12-Nov-25	10-Dec-24 A	30-Mar-26	-233	92.74%					



File Name: DE/2020/01 3M 260228
 Layout: DE2001 (Progress -3M)_Feb 2026
 TASK filter: 3 Months Rolling (2001 YL).
 Page 8 of 13

■ Remaining Work ◆ RP Rev.33 MS
■ Critical Activity ◆ Actual Milestone
◆ Milestone
■ Actual Progress
■ RP Rev.33

Contract No. DE/2020/01
Yuen Long Effluent Polishing Plant - E&M Works for Sludge Dewatering Building,
Administration Building and Renewable Energy
3 Months Rolling Programme (Based on RP Rev.33) as at 28 Feb 2026

Based on DE/2020/01 Revised Programme Rev.33			
Date	Revision	Checked	Approved
30-Nov-25	Rev.40	IM	JM
31-Dec-25	Rev.41	IM	JM
31-Jan-26	Rev.42	IM	JM
28-Feb-26	Rev.43	IM	JM

Activity ID	Activity Name	Remaining Duration	BL Start (DE2020/01 RPR33)	BL Finish (DE2020/01 RPR33)	Start	Finish	Total Fbat	Activity % Complete	2026			
									Feb 46	Mar 47	Apr 48	May 49
S3-SDB-DDA-2570	Review & comment on DDA Design of Control Wiring Diagram	21	21-Sep-25	11-Oct-25	31-Mar-26	20-Apr-26	-233	0%				
S3-SDB-DDA-2580	Re-submission of DDA Design of Control Wiring Diagram	19	12-Oct-25	29-Nov-25	21-Apr-26	09-May-26	-233	0%				
S3-SDB-DDA-2590	Approval of DDA Design of Control Wiring Diagram	21	30-Nov-25	20-Dec-25	10-May-26	30-May-26	-233	0%				
Biogas Pre-treatment System (DDA042)												
S3-SDB-DDA-2220	Re-submission of DDA Design of Biogas Pre-treatment System	15	21-Nov-25	08-Jan-26	21-Oct-25 A	15-Mar-26	-150	89.73%				
S3-SDB-DDA-2230	Approval of DDA Design of Biogas Pre-treatment System	87	09-Jan-26	29-Jan-26	16-Mar-26	10-Jun-26	-150	0%				
All Temporary Works and Diversion Works for Testing and Commissioning (DDA043)												
S3-SDB-DDA-2640	Prepare & Submission of DDA Design of All Temp. Works & Diversion for T&C	46	02-Nov-25	30-Jan-26	02-Nov-25 A	15-Apr-26	-205	72.12%				
S3-SDB-DDA-2650	Approval of DDA Design of All Temp. Works & Diversion for T&C	56	31-Jan-26	01-Mar-26	16-Apr-26	10-Jun-26	-205	0%				
Pipe support and O&M Platform Design Calculation (DDA044)												
S3-SDB-DDA-3020	Re-submission of DDA Design of Pipe Support and O&M Platform Design Calculation	15			15-Jan-26 A	15-Mar-26	-24	75%				
S3-SDB-DDA-3030	Approval of DDA Design of Pipe Support and O&M Platform Design Calculation	87			16-Mar-26	10-Jun-26	-24	0%				
Other Submission												
HAZOP Study Report												
S3-SDB-DDA-2790	Re-submission of HAZOP Study Report	20			15-Aug-25 A	20-Mar-26	-135	90.83%				
S3-SDB-DDA-2800	Approval of HAZOP Study Report	30			21-Mar-26	19-Apr-26	-135	0%				
Risk Assessment for Sludge Drying System												
S3-SDB-DDA-2860	Re-submission of Risk Assessment for Sludge Drying System	9			09-Aug-25 A	09-Mar-26	-115	95.77%				
S3-SDB-DDA-2870	Approval of Risk Assessment for Sludge Drying System	21			10-Mar-26	30-Mar-26	-115	0%				
Plant & Material Submission												
Sludge Dewatering and Drying System												
Sludge Dryer System												
Control Panel (ME003D)												
S3-SDB-PMS-2180	Re-submission of Sludge Dryer System (Control Panel)	0	05-Feb-26	08-Jan-27	17-Aug-24 A	30-Jan-26 A		100%				
S3-SDB-PMS-2190	Review & Approval of Sludge Dryer System (Control Panel)	71	21-Aug-25	04-Sep-25	31-Jan-26 A	10-May-26	-303	29%				
Auxiliary Equipment in Sludge Drying System (ME003E)												
S3-SDB-PMS-1760	Prepare & Submission of Auxiliary Equipment in Sludge Drying System	61	01-Aug-25	29-Oct-25	28-Jul-25 A	30-Apr-26	-36	73.59%				
S3-SDB-PMS-1790	Review & Approval of Auxiliary Equipment in Sludge Drying System	46	30-Dec-25	19-Jan-26	01-May-26	15-Jun-26	-36	0%				
Sludge Feed Pump (ME006)												
S3-SDB-PMS-1660	Re-submission of Sludge Feed Pump	0	06-Sep-25	08-Oct-25	21-Oct-25 A	09-Feb-26 A		100%				
S3-SDB-PMS-1670	Review & Approval of Sludge Feed Pump	83	09-Oct-25	29-Oct-25	10-Feb-26 A	22-May-26	-116	18.63%				
Wet Sludge Hopper and Dried Sludge Silo (ME007)												
S3-SDB-PMS-1680	Prepare & Submission of Wet Sludge Hopper and Dried Sludge Silo	22	01-Feb-25	07-Sep-25	06-Jan-25 A	22-Mar-26	-289	92.99%				
S3-SDB-PMS-1690	Review & comment on Wet Sludge Hopper and Dried Sludge Silo	21	21-Sep-25	11-Oct-25	23-Mar-26	12-Apr-26	-289	0%				
S3-SDB-PMS-1700	Re-submission of Wet Sludge Hopper and Dried Sludge Silo	50	12-Oct-25	08-Dec-25	13-Apr-26	01-Jun-26	-289	0%				
Dynamic Sludge Mixer (ME008)												
S3-SDB-PMS-1750	Review & Approval of Dynamic Sludge Mixer	44	11-Nov-25	01-Dec-25	21-Jan-26 A	13-Apr-26	-188	20%				
Sludge Skips (ME009)												
S3-SDB-PMS-2200	Prepare & Submission of Sludge Skips	89			01-Oct-25 A	28-May-26	-233	58.02%				
Digested Sludge Holding Tank Drain Pump and Polymer Pumps (ME022)												
S3-SDB-PMS-2220	Prepare & Submission of Digested Sludge Holding Tank Drain Pump and Polymer Pumps	56			12-Oct-25 A	25-Apr-26	-334	59.12%				
S3-SDB-PMS-2230	Review & Approval of Digested Sludge Holding Tank Drain Pump and Polymer Pumps	46			26-Apr-26	10-Jun-26	-334	0%				
Biogas Pre-treatment System (ME010)												
S3-SDB-PMS-1040	Prepare & Submission of Biogas Pre-treatment System	15	06-Feb-25	05-Oct-25	13-Jan-25 A	15-Mar-26	-214	96.49%				
S3-SDB-PMS-1070	Review & Approval of Biogas Pre-treatment System	61	22-Nov-25	12-Dec-25	16-Mar-26	15-May-26	-214	0%				
CHP Generator Set (ME011)												
S3-SDB-PMS-1080	Prepare & Submission of CHP Generator Set	0	01-Jun-25	28-Oct-25	09-May-25 A	29-Jan-26 A		100%				
S3-SDB-PMS-1110	Review & Approval of CHP Generator Set	30	19-Nov-25	09-Dec-25	30-Jan-26 A	30-Mar-26	-330	50%				
CHP Heat Recovery System (ME011D)												
S3-SDB-PMS-3580	Prepare & Submission of CHP Heat Recovery System	0			02-Jan-26 A	01-Mar-26	-278	100%				
S3-SDB-PMS-3610	Review & Approval of CHP Heat Recovery System	46			01-Mar-26	15-Apr-26	-278	0%				
Dual Fuel Steam Boiler System (ME013)												
S3-SDB-PMS-1120	Prepare & Submission of Dual Fuel Steam Boiler System	0	01-Feb-25	05-Aug-25	04-Jan-25 A	30-Jan-26 A		100%				
S3-SDB-PMS-1130	Review & comment on Dual Fuel Steam Boiler System	12	25-Aug-25	14-Sep-25	01-Feb-26 A	12-Mar-26	-252	70%				



File Name: DE/2020/01 3M 260228
Layout: DE2001 (Progress -3M)_Feb 2026
TASK filter: 3 Months Rolling (2001 YL).
Page 9 of 13

Remaining Work	RP Rev.33 MS
Critical Activity	Actual Milestone
Milestone	
Actual Progress	
RP Rev.33	

Contract No. DE/2020/01
Yuen Long Effluent Polishing Plant - E&M Works for Sludge Dewatering Building, Administration Building and Renewable Energy
3 Months Rolling Programme (Based on RP Rev.33) as at 28 Feb 2026

Based on DE/2020/01 Revised Programme Rev.33			
Date	Revision	Checked	Approved
30-Nov-25	Rev.40	IM	JM
31-Dec-25	Rev.41	IM	JM
31-Jan-26	Rev.42	IM	JM
28-Feb-26	Rev.43	IM	JM

Activity ID	Activity Name	Remaining Duration	BL Start (DE/2020/01 RPR33)	BL Finish (DE/2020/01 RPR33)	Start	Finish	Total Float	Activity % Complete	2026			
									Feb 46	Mar 47	Apr 48	May 49
S3-SDB-PMS-1140	Re-submission of Dual Fuel Steam Boiler System	23	25-Sep-25	13-Nov-25	13-Mar-26	04-Apr-26	-252	0%				
S3-SDB-PMS-1150	Review & Approval of Dual Fuel Steam Boiler System	21	14-Nov-25	04-Dec-25	05-Apr-26	25-Apr-26	-252	0%				
Polyelectrolyte Preparation, Mixing, Transfer, Storage and Dosing System (ME016)												
S3-SDB-PMS-1160	Prepare & Submission of Polyelectrolyte Preparation, Mixing, Transfer, Storage & Dosing System	41	01-Feb-25	23-Oct-25	06-Jan-25 A	10-Apr-26	-176	91.09%				
S3-SDB-PMS-1190	Review & Approval of Polyelectrolyte Preparation, Mixing, Transfer, Storage & Dosing System	30	06-Dec-25	26-Dec-25	11-Apr-26	10-May-26	-176	0%				
Deodourisation System												
Deodourisation System (EL-Panel) (ME015B)												
S3-SDB-PMS-3300	Prepare & Submission of Deodourisation System (EL-Panel)	40			01-Oct-25 A	09-Apr-26	-74	72.79%				
S3-SDB-PMS-3330	Review & Approval of Deodourisation System (EL-Panel)	30			10-Apr-26	09-May-26	-74	0%				
DO system (Associate Pipework & Valve & Instrument & Discharge Stack) (ME019)												
S3-SDB-PMS-3340	Prepare & Submission of DO system (Associate Pipework & Valve & Instrument & Discharge Stack)	0			01-Oct-25 A	29-Jan-26 A		100%				
S3-SDB-PMS-3350	Review & comment on DO system (Associate Pipework & Valve & Instrument & Discharge Stack)	0			30-Jan-26 A	09-Feb-26 A		100%				
S3-SDB-PMS-3360	Re-submission of DO system (Associate Pipework & Valve & Instrument & Discharge Stack)	40			10-Feb-26 A	09-Apr-26	-74	32.2%				
S3-SDB-PMS-3370	Review & Approval of DO system (Associate Pipework & Valve & Instrument & Discharge Stack)	30			10-Apr-26	09-May-26	-74	0%				
Air Purifying System with Disinfection (SDB and ADB) (ME020)												
S3-SDB-PMS-1960	Prepare & Submission of Air Purifying System with Disinfection (SDB and ADB)	22	01-Feb-25	05-Jan-26	26-Jan-25 A	22-Mar-26	-210	94.77%				
S3-SDB-PMS-1970	Review & comment on Air Purifying System with Disinfection (SDB and ADB)	21	31-Dec-25	20-Jan-26	23-Mar-26	12-Apr-26	-210	0%				
S3-SDB-PMS-1980	Re-submission of Air Purifying System with Disinfection (SDB and ADB)	50	21-Jan-26	11-Mar-26	13-Apr-26	01-Jun-26	-210	0%				
Lifting Appliance (ME017)												
S3-SDB-PMS-1300	Re-submission of Lifting Appliance	10	30-Aug-25	18-Oct-25	07-Jan-26 A	10-Mar-26	-413	84.13%				
S3-SDB-PMS-1310	Review & Approval of Lifting Appliance	31	19-Oct-25	08-Nov-25	11-Mar-26	10-Apr-26	-413	0%				
Valves and Actuators (DI) (ME021)												
S3-SDB-PMS-1340	Re-submission of Valves and Actuators (DI)	10	28-Oct-25	11-Dec-25	22-Jan-26 A	10-Mar-26	-187	79.17%				
S3-SDB-PMS-1350	Review & Approval of Valves and Actuators (DI)	31	12-Dec-25	01-Jan-26	11-Mar-26	10-Apr-26	-187	0%				
Chemical (uPVC) Pipes, Fittings and Accessories (ME023)												
S3-SDB-PMS-1420	Re-submission of uPVC Pipes, Fittings & Accessories	0	21-Jan-26	18-Feb-26	15-Oct-25 A	29-Jan-26 A		100%				
S3-SDB-PMS-1430	Review & Approval of uPVC Pipes, Fittings & Accessories	91	19-Feb-26	11-Mar-26	30-Jan-26 A	30-May-26	-53	24.79%				
SCADA and PLC system												
PLC Panel System (ICA001)												
S3-SDB-PMS-1460	Re-submission of PLC Panel system	20	02-Nov-25	06-Dec-25	11-Nov-25 A	20-Mar-26	-226	84.62%				
S3-SDB-PMS-1470	Review & Approval of PLC Panel system	61	07-Dec-25	27-Dec-25	21-Mar-26	20-May-26	-226	0%				
SCADA System (ICA002)												
S3-SDB-PMS-3400	Re-submission of SCADA system	20			11-Nov-25 A	20-Mar-26	-226	84.62%				
S3-SDB-PMS-3410	Review & Approval of SCADA system	61			21-Mar-26	20-May-26	-226	0%				
IDMS Workstation (ICA003)												
S3-SDB-PMS-3420	Prepare & Submission of IDMS Workstation, Master Switch and I/O module	20			10-Jan-26 A	20-Mar-26	-226	71.43%				
S3-SDB-PMS-3430	Review & comment on IDMS Workstation, Master Switch and I/O module	21			21-Mar-26	10-Apr-26	-226	0%				
S3-SDB-PMS-3440	Re-submission of IDMS Workstation, Master Switch and I/O module	19			11-Apr-26	29-Apr-26	-226	0%				
S3-SDB-PMS-3450	Review & Approval of IDMS Workstation, Master Switch and I/O module	21			30-Apr-26	20-May-26	-226	0%				
PQEMS (ICA004)												
S3-SDB-PMS-3480	Re-submission of PQEMS	0			11-Nov-25 A	31-Jan-26 A		100%				
S3-SDB-PMS-3490	Review & Approval of PQEMS	102			01-Feb-26 A	10-Jun-26	-247	21.54%				
Gas Detection System (ME026)												
S3-SDB-PMS-1500	Re-submission of Gas Detection System	28	23-Feb-26	09-Apr-26	18-Oct-25 A	28-Mar-26	-169	79.1%				
S3-SDB-PMS-1510	Review & Approval of Gas Detection System	41	10-Apr-26	30-Apr-26	29-Mar-26	08-May-26	-169	0%				
Instrumentation												
Pressure Switch and Pressure Transmitter (ICA005)												
S3-SDB-PMS-2270	Review & Approval of Pressure Switch and Pressure Transmitter	0			31-Dec-25 A	12-Feb-26 A		100%				
Level Alarm Instruments (ICA007)												
S3-SDB-PMS-2350	Review & Approval of Level Alarm Instruments	0			23-Dec-25 A	13-Feb-26 A		100%				



File Name: DE/2020/01 3M 260228
 Layout: DE2001 (Progress -3M)_Feb 2026
 TASK filter: 3 Months Rolling (2001 YL).
 Page 10 of 13

■ Remaining Work ◆ RP Rev.33 MS
■ Critical Activity ◆ Actual Milestone
◆ Milestone
■ Actual Progress
■ RP Rev.33

Contract No. DE/2020/01
Yuen Long Effluent Polishing Plant - E&M Works for Sludge Dewatering Building, Administration Building and Renewable Energy
3 Months Rolling Programme (Based on RP Rev.33) as at 28 Feb 2026

Based on DE/2020/01 Revised Programme Rev.33			
Date	Revision	Checked	Approved
30-Nov-25	Rev.40	IM	JM
31-Dec-25	Rev.41	IM	JM
31-Jan-26	Rev.42	IM	JM
28-Feb-26	Rev.43	IM	JM

Activity ID	Activity Name	Remaining Duration	BL Start (DE/2020/01 RP R33)	BL Finish (DE/2020/01 RP R33)	Start	Finish	Total Fbat	Activity % Complete	2026				
									Feb 46	Mar 47	Apr 48	May 49	
Electromagnetic and Flow Transmitter (ICA008)													
S3-SDB-PMS-2370	Review & comment on Electromagnetic and Flow Transmitter	0			17-Jan-26 A	05-Feb-26 A		100%					
S3-SDB-PMS-2380	Re-submission of Electromagnetic and Flow Transmitter	41			06-Feb-26 A	10-Apr-26	-395	35.94%					
S3-SDB-PMS-2390	Review & Approval of Electromagnetic and Flow Transmitter	122			11-Apr-26	10-Aug-26	-395	0%					
Sight Glass (ICA009)													
S3-SDB-PMS-2410	Review & comment on Sight Glass	0			24-Jan-26 A	16-Feb-26 A		100%					
S3-SDB-PMS-2420	Re-submission of Sight Glass	41			17-Feb-26 A	10-Apr-26	-395	22.64%					
S3-SDB-PMS-2430	Review & Approval of Sight Glass	122			11-Apr-26	10-Aug-26	-395	0%					
Flow Switch (ICA011)													
S3-SDB-PMS-2510	Review & Approval of Flow Switch	0			23-Dec-25 A	06-Feb-26 A		100%					
Total Suspended Solid Instrument (ICA012)													
S3-SDB-PMS-2540	Re-submission of Total Suspended Solid Instrument	0			21-Oct-25 A	20-Feb-26 A		100%					
S3-SDB-PMS-2550	Review & Approval of Total Suspended Solid Instrument	163			21-Feb-26 A	10-Aug-26	-395	4.68%					
Temperature Monitoring Instruments (ICA013)													
S3-SDB-PMS-2590	Review & Approval of Temperature Monitoring Instruments	0			23-Dec-25 A	12-Feb-26 A		100%					
Gas Detector Instruments (ICA015)													
S3-SDB-PMS-2670	Review & Approval of Gas Detector Instruments	163			25-Dec-25 A	10-Aug-26	-395	28.82%					
Ultrasonic Level Sensor (ICA016)													
S3-SDB-PMS-2710	Review & Approval of Ultrasonic Level Sensor	0			23-Dec-25 A	28-Jan-26 A		100%					
Air Ejector System (ME004)													
S3-SDB-PMS-1830	Review & Approval of Air Ejector System	0	29-Nov-25	19-Dec-25	08-Nov-25 A	03-Feb-26 A		100%					
Sludge Conveyors (ME005)													
S3-SDB-PMS-1840	Prepare & Submission of Sludge Conveyors	15	01-Feb-25	05-Aug-25	21-Jan-25 A	15-Mar-26	-116	96.23%					
S3-SDB-PMS-1870	Review & Approval of Sludge Conveyor	31	05-Dec-25	25-Dec-25	16-Mar-26	15-Apr-26	-116	0%					
Sludge Heating System (Biogas Hot-Water Heater) (ME012)													
S3-SDB-PMS-1880	Prepare & Submission of Sludge Heating System (Biogas Hot-Water Heater)	0	01-May-25	27-Sep-25	15-Apr-25 A	13-Feb-26 A		100%					
S3-SDB-PMS-1890	Review & comment on Sludge Heating System (Biogas Hot-Water Heater)	6	12-Sep-25	02-Oct-25	14-Feb-26 A	06-Mar-26	-251	71.43%					
S3-SDB-PMS-1900	Re-submission of Sludge Heating System (Biogas Hot-Water Heater)	18	03-Oct-25	21-Nov-25	07-Mar-26	24-Mar-26	-251	0%					
S3-SDB-PMS-1910	Review & Approval of Sludge Heating System (Biogas Hot-Water Heater)	21	22-Nov-25	12-Dec-25	25-Mar-26	14-Apr-26	-251	0%					
Exhaust Gas Treatment System (ME014)													
S3-SDB-PMS-1920	Prepare & Submission of Exhaust Gas Treatment System	10	01-Jun-25	17-Oct-25	09-May-25 A	10-Mar-26	-76	96.73%					
S3-SDB-PMS-1950	Review & Approval of Exhaust Gas Treatment System	30	05-Dec-25	25-Dec-25	11-Apr-26	10-May-26	-107	0%					
Emergency Diesel Generator System (EL024)													
S3-SDB-PMS-2070	Review & Approval of Emergency Diesel Generator System	150	01-Jun-25	31-Jan-26	11-Oct-25 A	28-Jul-26	-338	25%					
LVSB (EL008)													
S3-SDB-PMS-2740	Re-submission of LVSB	0			04-Dec-25 A	30-Jan-26 A		100%					
S3-SDB-PMS-2750	Review & Approval of LVSB	59			31-Jan-26 A	28-Apr-26	-218	32.95%					
UPS(EL025)													
S3-SDB-PMS-2850	Review & Approval of UPS	150			24-Sep-25 A	28-Jul-26	-218	51.3%					
Scissor Platform spare plant for operation (ME029)													
S3-SDB-PMS-3240	Re-submission of Scissor Platform spare plant for operation	91			09-Dec-25 A	30-May-26	-401	18.75%					
Chemical Anchors, Bolts, Nuts and Washer (ME024)													
S3-SDB-PMS-3200	Re-submission of Chemical Anchors, Bolts, Nuts & Washer	0			04-Oct-25 A	02-Feb-26 A		100%					
S3-SDB-PMS-3210	Review & Approval of Chemical Anchors, Bolts, Nuts & Washer	30			03-Feb-26 A	30-Mar-26	51	46.43%					
Permanent working platform & Pipe Support (ME028)													
S3-SDB-PMS-3520	Re-submission of Permanent working platform & Pipe Support	10			13-Dec-25 A	10-Mar-26	-3	87.18%					
S3-SDB-PMS-3530	Review & Approval of Permanent working platform & Pipe Support	31			11-Mar-26	10-Apr-26	-3	0%					
Valve and Actuator (SS) (BS023)													
S3-SDB-PMS-3540	Prepare & Submission of Valves and Actuators (SS)	41			01-Dec-25 A	10-Apr-26	-217	50%					
S3-SDB-PMS-3570	Review & Approval of Valves and Actuators (SS)	30			11-Apr-26	10-May-26	-217	0%					
Method Statement													
Sludge Mixing System													
S3-SDB-MS-1000	Prepare & Submission of method statement of installation of Sludge Mixing System	45	30-Oct-25	13-Dec-25	01-May-26	14-Jun-26	-190	0%					
Deodorisation Unit/System													
S3-SDB-MS-1520	Prepare & Submission of method statement of installation of Deodorisation Unit/System	30	16-Nov-25	15-Dec-25	01-May-26	30-May-26	-195	0%					



File Name: DE/2020/01 3M 260228
 Layout: DE2001 (Progress -3M)_Feb 2026
 TASK filter: 3 Months Rolling (2001 YL).

- Remaining Work
- Critical Activity
- Actual Progress
- RP Rev.33
- ◆ RP Rev.33 MS
- ◆ Actual Milestone
- ◆ Milestone

Contract No. DE/2020/01
Yuen Long Effluent Polishing Plant - E&M Works for Sludge Dewatering Building,
Administration Building and Renewable Energy
3 Months Rolling Programme (Based on RP Rev.33) as at 28 Feb 2026

Based on DE/2020/01 Revised Programme Rev.33			
Date	Revision	Checked	Approved
30-Nov-25	Rev.40	IM	JM
31-Dec-25	Rev.41	IM	JM
31-Jan-26	Rev.42	IM	JM
28-Feb-26	Rev.43	IM	JM

Activity ID	Activity Name	Remaining Duration	BL Start (DE/2020/01 RPR33)	BL Finish (DE/2020/01 RPR33)	Start	Finish	Total Float	Activity % Complete	2026				
									Feb 46	Mar 47	Apr 48	May 49	
Air Purifier System with Disinfection													
S3-SDB-MS-1560	Prepare & Submission of method statement of installation of Air Purifier System with Disinfection	30	29-May-26	27-Jun-26	16-Mar-26	14-Apr-26	-73	0%					
S3-SDB-MS-1570	Review & comment on method statement of installation of Air Purifier System with Disinfection	30	28-Jun-26	27-Jul-26	15-Apr-26	14-May-26	-73	0%					
S3-SDB-MS-1580	Re-submission of method statement of installation of Air Purifier System with Disinfection	30	28-Jul-26	26-Aug-26	15-May-26	13-Jun-26	-73	0%					
Lifting Appliance													
S3-SDB-MS-1600	Prepare & Submission of method statement of installation of Lifting Appliance	30	21-Jan-26	07-Mar-26	11-Apr-26	10-May-26	-379	0%					
S3-SDB-MS-1610	Review & comment on method statement of installation of Lifting Appliance	30	08-Mar-26	06-Apr-26	11-May-26	09-Jun-26	-379	0%					
Fire Services System													
S3-SDB-MS-2000	Prepare & Submission of method statement of installation of FS system	30	11-Nov-25	10-Dec-25	01-Mar-26	30-Mar-26	-248	0%					
S3-SDB-MS-2010	Review & comment on method statement of installation of FS system	21	11-Dec-25	31-Dec-25	31-Mar-26	20-Apr-26	-248	0%					
S3-SDB-MS-2020	Re-submission of method statement of installation of FS system	30	01-Jan-26	30-Jan-26	21-Apr-26	20-May-26	-248	0%					
S3-SDB-MS-2030	Approval of method statement of installation of FS system	21	31-Jan-26	20-Feb-26	21-May-26	10-Jun-26	-248	0%					
MVAC System (with effluent cooling system)													
S3-SDB-MS-2040	Prepare & Submission of method statement of installation of MVAC System (with effluent cooling system)	30	04-Apr-26	03-May-26	06-May-26	04-Jun-26	-258	0%					
P&D System													
S3-SDB-MS-2080	Prepare & Submission of method statement of installation of P&D System	30	26-May-26	24-Jun-26	06-May-26	04-Jun-26	-192	0%					
Earthing & Lightning Protection System													
S3-SDB-MS-2640	Prepare & Submission of method statement of Earthing & Lightning Protection System	30	12-Sep-25	11-Oct-25	01-Mar-26	30-Mar-26	-24	0%					
S3-SDB-MS-2650	Review & comment on method statement of Earthing & Lightning Protection System	21	12-Oct-25	01-Nov-25	31-Mar-26	20-Apr-26	-24	0%					
S3-SDB-MS-2660	Re-submission of method statement of Earthing & Lightning Protection System	28	02-Nov-25	29-Nov-25	21-Apr-26	18-May-26	-24	0%					
S3-SDB-MS-2670	Approval of method statement of Earthing & Lightning Protection System	21	30-Nov-25	20-Dec-25	19-May-26	08-Jun-26	-24	0%					
SAT / T&C procedure													
Lifting Appliance													
S3-SDB-SAT-1600	Prepare & Submission of SAT/ T&C Procedure (with Test Form) of Lifting Appliance	30	03-May-26	01-Jun-26	11-Apr-26	10-May-26	-153	0%					
S3-SDB-SAT-1610	Review & comment on SAT/ T&C Procedure (with Test Form) of Lifting Appliance	30	02-Jun-26	01-Jul-26	11-May-26	09-Jun-26	-153	0%					
Earthing & Lightning Protection System													
S3-SDB-SAT-2680	Prepare & Submission of T&C Plan (include FAT & SAT) of Earthing & Lightning Protection System	30	12-Oct-25	10-Nov-25	31-Mar-26	29-Apr-26	-16	0%					
S3-SDB-SAT-2690	Review & comment on T&C Plan (include FAT & SAT) of Earthing & Lightning Protection System	21	11-Nov-25	01-Dec-25	30-Apr-26	20-May-26	-16	0%					
S3-SDB-SAT-2700	Re-submission of T&C Plan (include FAT & SAT) of Earthing & Lightning Protection System	28	02-Dec-25	29-Dec-25	21-May-26	17-Jun-26	-16	0%					
Manufacture, FAT & Delivery of Major Equipment													
S3-SDB-MD-1000	Manufacture with FAT (4 months) & Delivery(1 months) of Lifting Appliance	154	09-Nov-25	09-May-26	30-Apr-26*	30-Sep-26	-432	0%					
S3-SDB-MD-1010	Manufacture of Dewatering Centrifuge	0	01-Jun-25	28-Feb-26	23-May-25 A	19-Feb-26 A		100%					
S3-SDB-MD-1020	FAT for Dewatering Centrifuge	0	21-Jan-26	19-Feb-26	22-Jan-26 A	20-Feb-26 A		100%					
S3-SDB-MD-1030	Delivery of Dewatering Centrifuge	24	20-Feb-26	21-Mar-26	21-Feb-26 A	24-Mar-26	57	20%					
S3-SDB-MD-1040	Manufacture of Dryer Centrifuge	162	01-Jun-25	28-Feb-26	10-Nov-25 A	09-Aug-26	-69	40.66%					
S3-SDB-MD-1070	Manufacture of Paddle Dryer	122	31-Aug-25	01-Aug-26	19-Aug-25 A	19-Aug-26	-135	66.67%					
S3-SDB-MD-1100	Manufacture with FAT (5 months) & Delivery(1 month) of Dynamic Sludge Mixer	184	02-Dec-25	02-Sep-26	22-Apr-26*	22-Oct-26	-197	0%					
S3-SDB-MD-1110	Manufacture with FAT (5 months) & Delivery(1 month) of Screw Conveyor	110	05-Sep-25	05-Feb-26	19-Dec-25 A	18-Jun-26	-43	39.56%					
S3-SDB-MD-1120	Manufacture with FAT (5 months) & Delivery(1 month) of Air Ejector	177	20-Dec-25	20-May-26	24-Feb-26 A	24-Aug-26	-117	2.75%					
S3-SDB-MD-1134	Manufacture with FAT (2 months) & Delivery(1 month) of Sludge Feed Pump	92	30-Oct-25	28-Feb-26	22-May-26	21-Aug-26	-116	0%					



File Name: DE/2020/01 3M 260228
 Layout: DE2001 (Progress -3M)_Feb 2026
 TASK filter: 3 Months Rolling (2001 YL).
 Page 12 of 13

■ Remaining Work ◆ RP Rev.33 MS
■ Critical Activity ◆ Actual Milestone
◆ Milestone
■ Actual Progress
■ RP Rev.33

Contract No. DE/2020/01
Yuen Long Effluent Polishing Plant - E&M Works for Sludge Dewatering Building,
Administration Building and Renewable Energy
3 Months Rolling Programme (Based on RP Rev.33) as at 28 Feb 2026

Based on DE/2020/01 Revised Programme Rev.33			
Date	Revision	Checked	Approved
30-Nov-25	Rev.40	IM	JM
31-Dec-25	Rev.41	IM	JM
31-Jan-26	Rev.42	IM	JM
28-Feb-26	Rev.43	IM	JM

Activity ID	Activity Name	Remaining Duration	BL Start (DE/2020/01 RPR33)	BL Finish (DE/2020/01 RPR33)	Start	Finish	Total Float	Activity % Complete	2026			
									Feb 46	Mar 47	Apr 48	May 49
S3-SDB-MD-1138	Manufacture with FAT (6 months) & Delivery(1 month) of Sludge Heating System - Heat Exchanger and Recirculation System	215	13-Dec-25	13-Jul-26	20-May-26*	20-Dec-26	-287	0%				
S3-SDB-MD-1140	Manufacture with FAT (6 months) & Delivery(1 month) of Biogas Pre-treatment System	215	13-Dec-25	13-Jul-26	15-May-26*	15-Dec-26	-214	0%				
S3-SDB-MD-1150	Manufacture with FAT (11 months) & Delivery(1 month) of CHP System	366	10-Dec-25	10-Feb-27	30-Mar-26*	30-Mar-27	-330	0%				
S3-SDB-MD-1155	Manufacture with FAT (3 months) & Delivery(1 month) of Exhaust Gas Treatment System	123	26-Dec-25	26-Apr-26	10-May-26	09-Sep-26	-107	0%				
S3-SDB-MD-1160	Manufacture with FAT (6 months) & Delivery(1 month) of Steam Boiler System	276	05-Dec-25	04-Sep-26	25-Apr-26	25-Jan-27	-252	0%				
S3-SDB-MD-1180	Manufacture with FAT (6 months) & Delivery(1 month) of Deodorisation System	150	19-Nov-25	19-Apr-26	29-Dec-25 A	28-Jul-26	-154	29.25%				
S3-SDB-MD-1290	Manufacture with FAT (7 months) & Delivery(1 month) of Off Gas Condenser System	98	11-Oct-25	11-Jun-26	06-Oct-25 A	06-Jun-26	-31	59.84%				
S3-SDB-MD-1300	Manufacture with FAT (3 months) & Delivery(1 month) of Sludge Conveyors	185	26-Dec-25	26-Jun-26	15-Apr-26	16-Oct-26	-116	0%				
S3-SDB-MD-1310	Manufacture with FAT (5 months) & Delivery(1 month) of Valves and Actuator (DI)	185			10-May-26*	10-Nov-26	-217	0%				
S3-SDB-MD-1315	Manufacture with FAT (5 months) & Delivery(1 month) of Valves and Actuator (SS)	185			10-May-26	10-Nov-26	-217	0%				
Interfacing Works												
S3-SDB-IFW-1000	Interface Works with Other Contract (including: Slab / Wall openings, Concrete Plinths, Cast-in Item, etc)	28	01-Jan-23	27-Feb-23	01-Feb-25 A	28-Mar-26	-273	93.35%				
S3-SDB-IFW-1010	Design submission with Interface Works on Plant Services Water	28	01-Jun-25	05-Nov-25	24-Aug-25 A	28-Mar-26	41	87.1%				
S3-SDB-IFW-1020	Design Submission with Interface Works on Biogas Pipes & Hot Water Pipes Connections	89	12-Dec-25	31-Aug-26	25-Apr-25 A	28-May-26	-81	77.69%				
S3-SDB-IFW-1030	Design Submission with Interface Works on Digested Sludge Pipes Connection	61	01-May-25	10-Jul-26	15-Jan-24 A	30-Apr-26	84	92.71%				
S3-SDB-IFW-1040	Design Submission with Interface Works on Process Water Treatment	30	01-May-25	31-Jan-26	29-Jan-25 A	30-Mar-26	39	92.96%				
S3-SDB-IFW-1060	Design Submission with Interface Works on Centrate & Filtrate Pipes	90	16-Oct-25	13-Jan-26	01-Mar-26	29-May-26	-158	0%				
S3-SDB-IFW-1080	Design Submission with Interface Works on Digested Sludge Holding Tank Drain Pipe	28	01-Aug-24	10-Sep-25	24-Aug-25 A	28-Mar-26	-25	87.1%				
S3-SDB-IFW-1090	Design Submission with Interface Works on Provisions in LV Switchroom at SDB	90	21-Aug-25	18-Nov-25	01-May-26	29-Jul-26	-295	0%				
S3-SDB-IFW-1100	Design Submission with Interface Works on PQEMS	90	19-Jun-25	21-Mar-26	01-May-26	29-Jul-26	-295	0%				
S3-SDB-IFW-1110	Design Submission with Interface Works on Cable Routing between SDB & ADB(LV)	90	02-Jul-25	03-Apr-26	21-Mar-26	18-Jun-26	-254	0%				
S3-SDB-IFW-1150	Design Submission with Interface Works on Shared Fresh Air intake for SDB loading & unloading level	90	21-Dec-25	20-Mar-26	01-Mar-26	29-May-26	-180	0%				
S3-SDB-IFW-1160	Design Submission with Interface Works on Sprinkler Water, Fire Hydrant & Hose Reel Water Main.	90	02-Dec-25	01-Mar-26	06-May-26	03-Aug-26	-246	0%				
S3-SDB-IFW-1170	Design Submission with Interface Works on Emergency Generator Set	89	02-Jun-25	06-Mar-26	06-Feb-24 A	28-May-26	-270	89.44%				
S3-SDB-IFW-1180	Design Submission with Interface Works on Connection between Local Fire Alarm Indication, local & master control panel	90	02-Dec-25	01-Mar-26	06-May-26	03-Aug-26	-201	0%				
S3-SDB-IFW-1190	Design Submission with Interface Works on Plumbing & Drainage	89	26-May-26	23-Aug-26	17-Dec-25 A	28-May-26	-51	45.4%				
E&M Installation												
External Area												
Utilities Corridor												
S3-UC-IN-1020	Tentative Access Date for Utilities Corridor (UC4) (According to the interface meeting with C1)	0	01-Mar-27		30-Apr-26*		-15	0%				
Testing and Commissioning												
SAT												
S3-SDB-TC-1215	Provision of Drainage Pipe (Provided by C1) (According to Interface Meeting with C1)	0			01-Mar-26*		253	0%				
S3-SDB-TC-1237	Application for on-grid connection to CLP include Renewable Energy (CHP and Solar PV System)	178	02-Jun-25	24-Jun-26	12-Mar-25 A	06-Oct-26	-128	54.71%				
Statutory Submission, Inspection & Approval												
Electrical and Mechanical Services Department												
S3-SDB-SS-1200	BEE0 Stage one: Submit EE1 & EE-SU to EMSD	15	01-Aug-25	29-Sep-25	17-Oct-25 A	15-Mar-26	-247	87.7%				



File Name: DE/2020/01 3M 260228
Layout: DE2001 (Progress -3M)_Feb 2026
TASK filter: 3 Months Rolling (2001 YL).

- Remaining Work
- Critical Activity
- Actual Progress
- RP Rev.33
- ◆ RP Rev.33 MS
- ◆ Actual Milestone
- ◆ Milestone

Contract No. DE/2020/01
Yuen Long Effluent Polishing Plant - E&M Works for Sludge Dewatering Building, Administration Building and Renewable Energy
3 Months Rolling Programme (Based on RP Rev.33) as at 28 Feb 2026

Based on DE/2020/01 Revised Programme Rev.33			
Date	Revision	Checked	Approved
30-Nov-25	Rev.40	IM	JM
31-Dec-25	Rev.41	IM	JM
31-Jan-26	Rev.42	IM	JM
28-Feb-26	Rev.43	IM	JM