
Air Quality Monitoring Results

Air Quality Monitoring Results for

Contract No. SPW 07/2020

Environmental Team for Construction of Yuen Long Effluent Polishing Plant Stage 1

AM1 - Topfine Machinery (China) Co. Ltd.

Date	Weather Condition	Start Time	1-hour TSP ($\mu\text{g}/\text{m}^3$)			Action Level (ug/m^3)	Limit Level (ug/m^3)
			1st Measurement	2nd Measurement	3rd Measurement		
5-Sep-22	Fine	8:35	119	130	123	291	500
10-Sep-22	Cloudy	8:39	130	147	161		
16-Sep-22	Cloudy	8:31	144	151	133		
22-Sep-22	Cloudy	8:42	77	88	95		
28-Sep-22	Cloudy	8:32	116	109	116		
		Min	77				
		Max	161				
		Average	123				

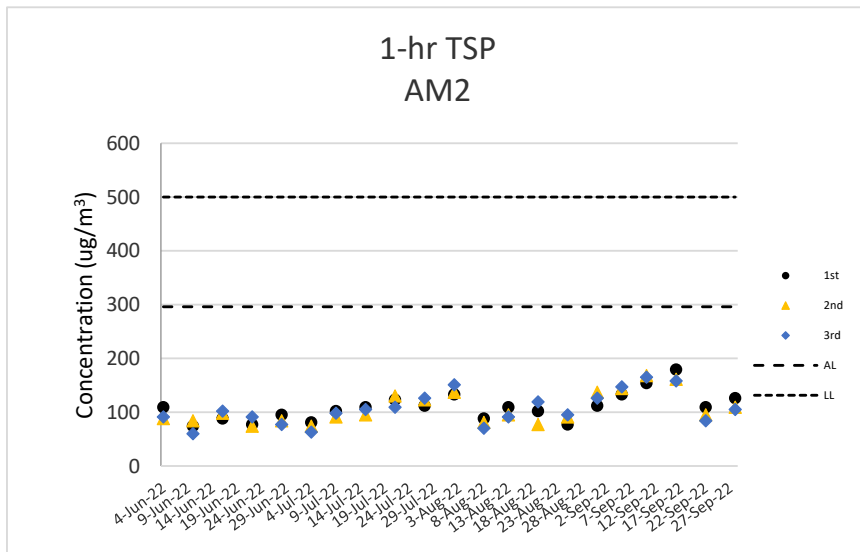
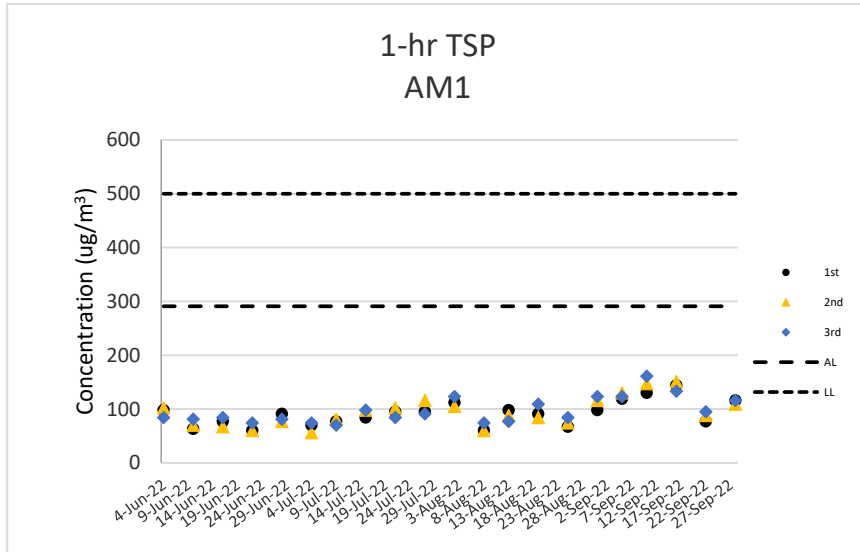
AM2 - Squatter house at the west of Yuen Long STW

Date	Weather Condition	Start Time	1-hour TSP ($\mu\text{g}/\text{m}^3$)			Action Level (ug/m^3)	Limit Level (ug/m^3)
			1st Measurement	2nd Measurement	3rd Measurement		
5-Sep-22	Fine	8:49	133	144	147	296	500
10-Sep-22	Cloudy	8:52	154	168	165		
16-Sep-22	Cloudy	8:40	179	161	158		
22-Sep-22	Cloudy	8:31	109	95	84		
28-Sep-22	Cloudy	8:41	126	109	105		
		Min	84				
		Max	179				
		Average	136				

Note:

Underline: Exceedance of Action Level

Underline and Bold: Exceedance of Limit Level



Air Quality Monitoring Results

Noise Monitoring Results

**Noise Monitoring Results for
Contract No. SPW 07/2020
Environmental Team for Construction of Yuen Long Effluent Polishing Plant Stage 1**

CM1 - Squatter house to the north of YLSTW

Date	Start Time	L _{eq} 30min dB(A)	L ₁₀ dB(A)	L ₉₀ dB(A)	Wind Speed (m/s)	Weather	Limit Level dB(A)
5-Sep-22	10:22	52	54	50	0.1	Fine	75
16-Sep-22	10:03	51	53	50	0.1	Cloudy	75
22-Sep-22	9:29	52	54	50	0.1	Cloudy	75
28-Sep-22	10:03	52	54	50	0.2	Cloudy	75
	Max	52					
	Min	51					

CM2 - Squatter house to the west of YLSTW

Date	Start Time	L _{eq} 30min dB(A)	L ₁₀ dB(A)	L ₉₀ dB(A)	Wind Speed (m/s)	Weather	Limit Level dB(A)
5-Sep-22	8:57	63	67	55	0.1	Fine	75
16-Sep-22	8:46	62	65	55	0.2	Cloudy	75
22-Sep-22	10:58	62	64	55	0.2	Cloudy	75
28-Sep-22	8:46	62	65	55	0.2	Cloudy	75
	Max	63					
	Min	62					

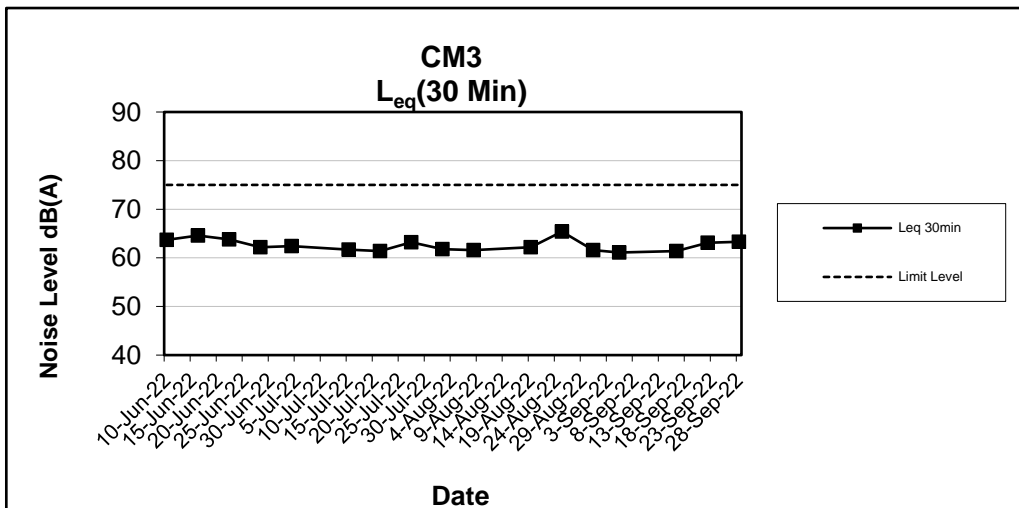
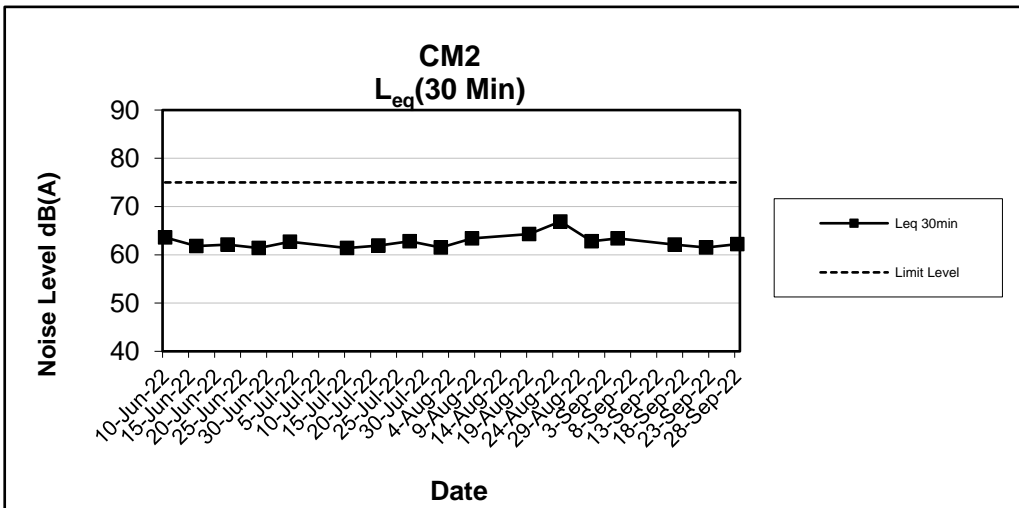
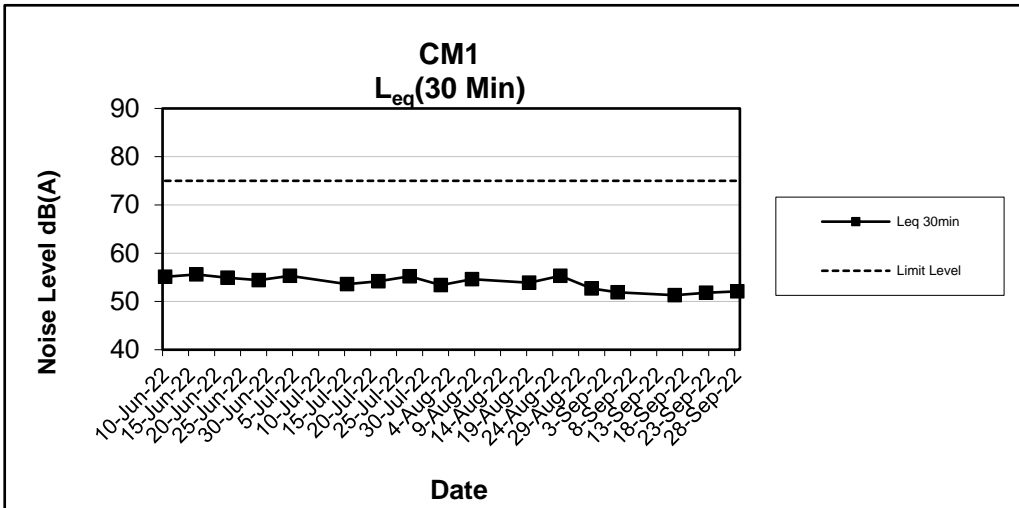
CM3 - Squatter house to the east of YLSTW

Date	Start Time	L _{eq} 30min dB(A)	L ₁₀ dB(A)	L ₉₀ dB(A)	Wind Speed (m/s)	Weather	Limit Level dB(A)
5-Sep-22	13:02	61	64	56	0.2	Fine	75
16-Sep-22	11:28	61	64	57	0.1	Cloudy	75
22-Sep-22	13:13	63	66	57	0.3	Cloudy	75
28-Sep-22	11:25	63	66	58	0.3	Cloudy	75
	Max	63					
	Min	61					

Note:

CM1, CM2 and CM3: Free-field measurement (+3dB(A) correction has been applied).

No raining or wind with speed over 5 m/s was observed during noise monitoring according to the onsite observation.



Noise Monitoring Results

Water Quality Monitoring Results

Contract No. SPW 07/2020 Environmental Team for Construction of Yuen Long Effluent Polishing Plant Stage 1

Water Quality Monitoring Results

Monitoring Location	Date	Tide Mode	Weather	Sea Condition	Time	Water Depth (m)	Monitoring Level	Monitoring Level (m)	Replicate	In-situ Measurement												Laboratory Analysis			
										Current Speed (m/s)	Current Direction (°)	pH		Salinity (ppt)		Temperature (degree C)		DO Saturation (%)		DO (mg/L)		Turbidity (NTU)		Total Suspended Solids (mg/L)	
												Value	Value	Value	Ave.	Value	Ave.	Value	Ave.	Value	Ave.	Value	Ave.	Value	Ave.
M1	1/9/2022	Mid-Flood	Fine	Moderate	10:40	1.1	M	0.55	1	0.042	212	7.49	7.47	1.46	1.45	30.20	30.50	82.5	82.3	6.17	6.13	26.7	26.7	24	24
M1	1/9/2022	Mid-Flood	Fine	Moderate	10:40	1.1	M	0.55	2			7.44		1.44		30.80		82.1		6.09		26.6		23	
M2	1/9/2022	Mid-Flood	Fine	Moderate	10:59	1	M	0.5	1	0.053	234	7.23	7.24	1.82	1.83	30.04	30.06	77.3	77.3	6.01	6.01	24.7	24.7	24	25
M2	1/9/2022	Mid-Flood	Fine	Moderate	10:59	1	M	0.5	2			7.24		1.83		30.07		77.2		6.00		24.7		26	
M3	1/9/2022	Mid-Flood	Fine	Moderate	10:30	1.2	M	0.6	1	0.063	144	7.24	7.25	1.31	1.32	30.27	30.27	51.5	51.7	3.85	3.86	33.9	33.9	34	34
M3	1/9/2022	Mid-Flood	Fine	Moderate	10:30	1.2	M	0.6	2			7.26		1.32		30.26		51.8		3.87		33.9		34	
M1	1/9/2022	Mid-Ebb	Fine	Moderate	16:53	1	M	0.5	1	0.076	33	7.70	7.71	1.93	1.94	29.24	29.26	80.6	80.4	6.31	6.29	18.9	18.9	24	24
M1	1/9/2022	Mid-Ebb	Fine	Moderate	16:53	1	M	0.5	2			7.71		1.94		29.27		80.2		6.27		18.9		23	
M2	1/9/2022	Mid-Ebb	Fine	Moderate	16:36	0.8	M	0.4	1	0.07	103	7.51	7.52	1.83	1.84	29.14	29.13	79.1	79.2	6.24	6.27	22.0	22.0	21	22
M2	1/9/2022	Mid-Ebb	Fine	Moderate	16:36	0.8	M	0.4	2			7.52		1.84		29.11		79.3		6.29		22.0		23	
M3	1/9/2022	Mid-Ebb	Fine	Moderate	16:47	1	M	0.5	1	0.053	76	7.01	7.02	1.35	1.36	29.73	29.74	53.4	53.6	3.99	4.01	34.9	34.8	24	25
M3	1/9/2022	Mid-Ebb	Fine	Moderate	16:47	1	M	0.5	2			7.02		1.36		29.74		53.7		4.02		34.8		26	

Remark

1. Orange and Bold: Action Level Exceedance (For Impact Station Only)
2. Red and Bold: Limit Level Exceedance (For Impact Station Only)
3. Action Level for Turbidity: 95%-ile of baseline data or 120% of upstream control station's turbidity recorded on the same day.
4. Limit Level for Turbidity: 99%-ile of baseline data or 130% of upstream control station's turbidity recorded on the same day.
5. Action Level for SS: 95%-ile of baseline data or 120% of upstream control station's SS recorded on the same day.
6. Limit Level for SS: 99%-ile of baseline data or 130% of upstream control station's SS recorded on the same day.

For Flood Tide

Monitoring Location	DO		NTU		SS	
	AL	LL	AL	LL	AL	LL
M2(Impact Station)	1.88	1.79	43.0	52.4	81	112
M3(Impact Station)	3.28	3.14	74.3	78.0	104	167

For Ebb Tide

Monitoring Location	DO		NTU		SS	
	AL	LL	AL	LL	AL	LL
M1(Impact Station)	2.25	1.91	48.4	50.4	59	68

Contract No. SPW 07/2020 Environmental Team for Construction of Yuen Long Effluent Polishing Plant Stage 1

Water Quality Monitoring Results

Monitoring Location	Date	Tide Mode	Weather	Sea Condition	Time	Water Depth (m)	Monitoring Level	Monitoring Level (m)	Replicate	In-situ Measurement												Laboratory Analysis				
										Current Speed (m/s)	Current Direction (°)	pH		Salinity (ppt)		Temperature (degree C)		DO Saturation (%)		DO (mg/L)		Turbidity (NTU)		Total Suspended Solids (mg/L)		
												Value	Value	Value	Ave.	Value	Ave.	Value	Ave.	Value	Ave.	Value	Ave.	Value	Ave.	Value
M1	3/9/2022	Mid-Flood	Fine	Moderate	12:13	1.1	M	0.55	1	0.043	123	7.24	7.23	0.67	0.68	0.68	28.78	28.76	55.2	55.3	4.25	4.27	23.8	23.9	30	29
M1	3/9/2022	Mid-Flood	Fine	Moderate	12:13	1.1	M	0.55	2			7.22		28.74			55.4		4.29		23.9		27			
M2	3/9/2022	Mid-Flood	Fine	Moderate	12:31	0.9	M	0.45	1	0.059	55	7.05	7.05	0.93	0.94	0.94	29.01	29.01	60.7	60.6	4.43	4.42	25.2	25.2	18	19
M2	3/9/2022	Mid-Flood	Fine	Moderate	12:31	0.9	M	0.45	2			7.04		29.01			60.4		4.41		25.1		20			
M3	3/9/2022	Mid-Flood	Fine	Moderate	12:43	1.4	M	0.7	1	0.034	73	7.08	7.09	1.35	1.35	1.35	28.64	28.65	59.1	59.2	4.32	4.33	32.8	32.8	30	31
M3	3/9/2022	Mid-Flood	Fine	Moderate	12:43	1.4	M	0.7	2			7.09		28.66			59.2		4.34		32.9		32			
M1	3/9/2022	Mid-Ebb	Fine	Moderate	18:20	1	M	0.5	1	0.033	284	7.33	7.31	1.38	1.39	1.39	28.84	28.86	52.6	53.2	4.37	4.39	25.1	25.1	18	19
M1	3/9/2022	Mid-Ebb	Fine	Moderate	18:20	1	M	0.5	2			7.29		28.87			53.8		4.41		25.1		19			
M2	3/9/2022	Mid-Ebb	Fine	Moderate	18:02	0.8	M	0.4	1	0.055	79	7.09	7.09	0.74	0.73	0.73	28.24	28.23	47.1	47.2	4.09	4.10	24.1	24.1	31	31
M2	3/9/2022	Mid-Ebb	Fine	Moderate	18:02	0.8	M	0.4	2			7.08		28.22			47.3		4.10		24.2		30			
M3	3/9/2022	Mid-Ebb	Fine	Moderate	18:32	1.2	M	0.6	1	0.067	44	7.08	7.06	1.48	1.49	1.49	27.94	27.97	62.8	62.6	4.41	4.42	34.8	34.4	13	14
M3	3/9/2022	Mid-Ebb	Fine	Moderate	18:32	1.2	M	0.6	2			7.04		27.99			62.4		4.42		34.0		14			

Remark

1. Orange and Bold: Action Level Exceedance (For Impact Station Only)
2. Red and Bold: Limit Level Exceedance (For Impact Station Only)
3. Action Level for Turbidity: 95%-ile of baseline data or 120% of upstream control station's turbidity recorded on the same day.
4. Limit Level for Turbidity: 99%-ile of baseline data or 130% of upstream control station's turbidity recorded on the same day.
5. Action Level for SS: 95%-ile of baseline data or 120% of upstream control station's SS recorded on the same day.
6. Limit Level for SS: 99%-ile of baseline data or 130% of upstream control station's SS recorded on the same day.

For Flood Tide

Monitoring Location	DO		NTU		SS	
	AL	LL	AL	LL	AL	LL
M2(Impact Station)	1.88	1.79	43.0	52.4	81	112
M3(Impact Station)	3.28	3.14	74.3	78.0	104	167

For Ebb Tide

Monitoring Location	DO		NTU		SS	
	AL	LL	AL	LL	AL	LL
M1(Impact Station)	2.25	1.91	48.4	50.4	59	68

Contract No. SPW 07/2020 Environmental Team for Construction of Yuen Long Effluent Polishing Plant Stage 1

Water Quality Monitoring Results

Monitoring Location	Date	Tide Mode	Weather	Sea Condition	Time	Water Depth (m)	Monitoring Level	Monitoring Level (m)	Replicate	In-situ Measurement												Laboratory Analysis			
										Current Speed (m/s)	Current Direction (°)	pH		Salinity (ppt)		Temperature (degree C)		DO Saturation (%)		DO (mg/L)		Turbidity (NTU)		Total Suspended Solids (mg/L)	
												Value	Value	Value	Ave.	Value	Ave.	Value	Ave.	Value	Ave.	Value	Ave.	Value	Ave.
M1	6/9/2022	Mid-Flood	Fine	Moderate	18:16	0.8	M	0.4	1	0.056	73	7.46	7.48	2.94	2.94	27.92	27.93	84.5	84.3	6.73	6.72	25.1	25.1	26	26
M1	6/9/2022	Mid-Flood	Fine	Moderate	18:16	0.8	M	0.4	2			7.49		2.93		27.93		84.1		6.70		25.1		25	
M2	6/9/2022	Mid-Flood	Fine	Moderate	17:58	0.7	M	0.35	1	0.056	98	7.76	7.75	2.82	2.83	28.74	28.76	90.2	90.2	6.84	6.84	24.2	24.2	20	22
M2	6/9/2022	Mid-Flood	Fine	Moderate	17:58	0.7	M	0.35	2			7.74		2.83		28.77		90.1		6.83		24.2		23	
M3	6/9/2022	Mid-Flood	Fine	Moderate	18:30	1.4	M	0.7	1	0.042	76	6.91	6.92	1.84	1.85	30.41	30.41	60.8	60.5	4.34	4.32	46.3	46.3	27	26
M3	6/9/2022	Mid-Flood	Fine	Moderate	18:30	1.4	M	0.7	2			6.92		1.86		30.40		60.2		4.30		46.3		25	
M1	6/9/2022	Mid-Ebb	Fine	Moderate	9:47	0.9	M	0.45	1	0.094	104	7.23	7.24	3.46	3.45	30.18	30.16	90.3	90.4	6.43	6.44	25.8	25.7	42	42
M1	6/9/2022	Mid-Ebb	Fine	Moderate	9:47	0.9	M	0.45	2			7.24		3.44		30.14		90.4		6.44		25.7		41	
M2	6/9/2022	Mid-Ebb	Fine	Moderate	10:06	0.8	M	0.4	1	0.047	76	7.31	7.32	3.87	3.87	29.24	29.23	87.6	87.5	6.23	6.22	26.1	26.1	20	21
M2	6/9/2022	Mid-Ebb	Fine	Moderate	10:06	0.8	M	0.4	2			7.32		3.86		29.21		87.4		6.21		26.1		22	
M3	6/9/2022	Mid-Ebb	Fine	Moderate	10:20	0.9	M	0.45	1	0.063	123	7.04	7.04	1.90	1.91	30.83	30.84	57.2	57.3	4.22	4.26	47.8	47.8	34	35
M3	6/9/2022	Mid-Ebb	Fine	Moderate	10:20	0.9	M	0.45	2			7.03		1.91		30.84		57.3		4.29		47.8		35	

Remark

1. Orange and Bold: Action Level Exceedance (For Impact Station Only)
2. Red and Bold: Limit Level Exceedance (For Impact Station Only)
3. Action Level for Turbidity: 95%-ile of baseline data or 120% of upstream control station's turbidity recorded on the same day.
4. Limit Level for Turbidity: 99%-ile of baseline data or 130% of upstream control station's turbidity recorded on the same day.
5. Action Level for SS: 95%-ile of baseline data or 120% of upstream control station's SS recorded on the same day.
6. Limit Level for SS: 99%-ile of baseline data or 130% of upstream control station's SS recorded on the same day.

For Flood Tide

Monitoring Location	DO		NTU		SS	
	AL	LL	AL	LL	AL	LL
M2(Impact Station)	1.88	1.79	43.0	52.4	81	112
M3(Impact Station)	3.28	3.14	74.3	78.0	104	167

For Ebb Tide

Monitoring Location	DO		NTU		SS	
	AL	LL	AL	LL	AL	LL
M1(Impact Station)	2.25	1.91	48.4	50.4	59	68

Contract No. SPW 07/2020 Environmental Team for Construction of Yuen Long Effluent Polishing Plant Stage 1

Water Quality Monitoring Results

Monitoring Location	Date	Tide Mode	Weather	Sea Condition	Time	Water Depth (m)	Monitoring Level	Monitoring Level (m)	Replicate	In-situ Measurement														Laboratory Analysis	
										Current Speed (m/s)	Current Direction (°)	pH		Salinity (ppt)		Temperature (degree C)		DO Saturation (%)		DO (mg/L)		Turbidity (NTU)		Total Suspended Solids (mg/L)	
												Value	Value	Value	Ave.	Value	Ave.	Value	Ave.	Value	Ave.	Value	Ave.	Value	Ave.
M1	8/9/2022	Mid-Flood	Fine	Moderate	19:58	1.1	M	0.55	1	0.047	92	6.77	6.80	2.94	2.94	29.22	29.22	62.4	62.4	5.04	5.04	28.3	28.3	48	49
M1	8/9/2022	Mid-Flood	Fine	Moderate	19:58	1.1	M	0.55	2			6.82		2.93		29.21		62.3		5.03		28.3		50	
M2	8/9/2022	Mid-Flood	Fine	Moderate	19:34	1	M	0.5	1	0.054	73	6.82	6.82	2.81	2.82	29.43	29.42	60.7	60.5	4.82	4.78	27.2	27.2	45	45
M2	8/9/2022	Mid-Flood	Fine	Moderate	19:34	1	M	0.5	2			6.81		2.82		29.41		60.3		4.74		27.2		45	
M3	8/9/2022	Mid-Flood	Cloudy	Smooth	19:32	0.6	M	0.3	1	0.286	81	7.35	7.36	3.07	3.07	29.03	29.03	58.9	58.7	4.36	4.35	25.1	25.3	58	57
M3	8/9/2022	Mid-Flood	Cloudy	Smooth	19:32	0.6	M	0.3	2			7.37		3.06		29.02		58.4		4.33		25.4		55	
M1	8/9/2022	Mid-Ebb	Fine	Moderate	12:19	0.9	M	0.45	1	0.065	305	6.81	6.82	4.48	4.49	30.07	30.39	57.4	57.3	4.23	4.22	25.2	25.2	42	43
M1	8/9/2022	Mid-Ebb	Fine	Moderate	12:19	0.9	M	0.45	2			6.82		4.49		30.71		57.2		4.21		25.1		44	
M2	8/9/2022	Mid-Ebb	Fine	Moderate	12:47	0.8	M	0.4	1	0.073	243	6.70	6.72	4.56	4.58	29.23	29.26	53.1	53.2	4.07	4.08	25.8	25.8	35	34
M2	8/9/2022	Mid-Ebb	Fine	Moderate	12:47	0.8	M	0.4	2			6.74		4.59		29.28		53.2		4.08		25.8		33	
M3	8/9/2022	Mid-Ebb	Cloudy	Smooth	12:07	0.8	M	0.4	1	0.331	263	7.18	7.18	4.13	4.14	30.81	30.82	64.7	64.3	4.77	4.74	27.8	28.2	35	34
M3	8/9/2022	Mid-Ebb	Cloudy	Smooth	12:07	0.8	M	0.4	2			7.17		4.14		30.83		63.9		4.71		28.7		32	

Remark

1. Orange and Bold: Action Level Exceedance (For Impact Station Only)
2. Red and Bold: Limit Level Exceedance (For Impact Station Only)
3. Action Level for Turbidity: 95%-ile of baseline data or 120% of upstream control station's turbidity recorded on the same day.
4. Limit Level for Turbidity: 99%-ile of baseline data or 130% of upstream control station's turbidity recorded on the same day.
5. Action Level for SS: 95%-ile of baseline data or 120% of upstream control station's SS recorded on the same day.
6. Limit Level for SS: 99%-ile of baseline data or 130% of upstream control station's SS recorded on the same day.

For Flood Tide

Monitoring Location	DO		NTU		SS	
	AL	LL	AL	LL	AL	LL
M2(Impact Station)	1.88	1.79	43.0	52.4	81	112
M3(Impact Station)	3.28	3.14	74.3	78.0	104	167

For Ebb Tide

Monitoring Location	DO		NTU		SS	
	AL	LL	AL	LL	AL	LL
M1(Impact Station)	2.25	1.91	48.4	50.4	59	68

Contract No. SPW 07/2020 Environmental Team for Construction of Yuen Long Effluent Polishing Plant Stage 1

Water Quality Monitoring Results

Monitoring Location	Date	Tide Mode	Weather	Sea Condition	Time	Water Depth (m)	Monitoring Level	Monitoring Level (m)	Replicate	In-situ Measurement												Laboratory Analysis			
										Current Speed (m/s)	Current Direction (°)	pH		Salinity (ppt)		Temperature (degree C)		DO Saturation (%)		DO (mg/L)		Turbidity (NTU)		Total Suspended Solids (mg/L)	
												Value	Value	Value	Ave.	Value	Ave.	Value	Ave.	Value	Ave.	Value	Ave.	Value	Ave.
M1	10/9/2022	Mid-Flood	Fine	Moderate	21:01	1.3	M	0.65	1	0.084	65	7.11	7.12	13.26	13.25	28.46	28.45	70.2	70.2	6.04	6.04	27.5	27.5	37	38
M1	10/9/2022	Mid-Flood	Fine	Moderate	21:01	1.3	M	0.65	2			7.12		13.24		28.43		70.1		6.03		27.5		38	
M2	10/9/2022	Mid-Flood	Fine	Moderate	20:41	1.1	M	0.55	1	0.093	55	7.03	7.04	14.16	14.14	29.98	29.99	74.2	74.3	6.23	6.25	28.3	28.3	32	31
M2	10/9/2022	Mid-Flood	Fine	Moderate	20:41	1.1	M	0.55	2			7.04		14.12		29.99		74.4		6.27		28.3		29	
M3	10/9/2022	Mid-Flood	Cloudy	Calm	20:36	0.6	M	0.3	1	0.356	81	7.89	7.89	7.34	7.35	29.25	29.25	63.1	63.4	4.63	4.66	20.6	20.2	27	26
M3	10/9/2022	Mid-Flood	Cloudy	Calm	20:36	0.6	M	0.3	2			7.88		7.36		29.24		63.7		4.68		19.8		25	
M1	10/9/2022	Mid-Ebb	Fine	Moderate	13:48	0.9	M	0.45	1	0.063	176	7.84	7.83	13.17	13.14	29.48	29.46	90.6	90.5	6.54	6.53	27.5	27.5	19	19
M1	10/9/2022	Mid-Ebb	Fine	Moderate	13:48	0.9	M	0.45	2			7.81		13.11		29.44		90.4		6.52		27.5		19	
M2	10/9/2022	Mid-Ebb	Fine	Moderate	14:08	0.8	M	0.4	1	0.055	43	7.91	7.92	12.10	12.10	29.01	29.02	89.4	89.4	6.43	6.43	26.4	26.4	23	23
M2	10/9/2022	Mid-Ebb	Fine	Moderate	14:08	0.8	M	0.4	2			7.92		12.09		29.02		89.3		6.42		26.4		22	
M3	10/9/2022	Mid-Ebb	Cloudy	Calm	13:44	1	M	0.5	1	0.401	277	7.50	7.51	5.42	5.42	32.01	32.02	70.3	70.1	5.14	5.12	23.9	23.5	38	38
M3	10/9/2022	Mid-Ebb	Cloudy	Calm	13:44	1	M	0.5	2			7.51		5.42		32.03		69.8		5.10		23.1		37	

Remark

1. Orange and Bold: Action Level Exceedance (For Impact Station Only)
2. Red and Bold: Limit Level Exceedance (For Impact Station Only)
3. Action Level for Turbidity: 95%-ile of baseline data or 120% of upstream control station's turbidity recorded on the same day.
4. Limit Level for Turbidity: 99%-ile of baseline data or 130% of upstream control station's turbidity recorded on the same day.
5. Action Level for SS: 95%-ile of baseline data or 120% of upstream control station's SS recorded on the same day.
6. Limit Level for SS: 99%-ile of baseline data or 130% of upstream control station's SS recorded on the same day.

For Flood Tide

Monitoring Location	DO		NTU		SS	
	AL	LL	AL	LL	AL	LL
M2(Impact Station)	1.88	1.79	43.0	52.4	81	112
M3(Impact Station)	3.28	3.14	74.3	78.0	104	167

For Ebb Tide

Monitoring Location	DO		NTU		SS	
	AL	LL	AL	LL	AL	LL
M1(Impact Station)	2.25	1.91	48.4	50.4	59	68

Contract No. SPW 07/2020 Environmental Team for Construction of Yuen Long Effluent Polishing Plant Stage 1

Water Quality Monitoring Results

Monitoring Location	Date	Tide Mode	Weather	Sea Condition	Time	Water Depth (m)	Monitoring Level	Monitoring Level (m)	Replicate	In-situ Measurement												Laboratory Analysis			
										Current Speed (m/s)	Current Direction (°)	pH		Salinity (ppt)		Temperature (degree C)		DO Saturation (%)		DO (mg/L)		Turbidity (NTU)		Total Suspended Solids (mg/L)	
												Value	Value	Value	Ave.	Value	Ave.	Value	Ave.	Value	Ave.	Value	Ave.	Value	Ave.
M1	13/9/2022	Mid-Flood	Fine	Moderate	9:24	1.3	M	0.65	1	0.075	106	8.02	8.03	2.41	2.42	30.01	30.02	61.2	61.3	4.56	4.58	20.6	20.6	17	19
M1	13/9/2022	Mid-Flood	Fine	Moderate	9:24	1.3	M	0.65	2			8.04		8.04		2.43		30.02		61.4		4.59		20.5	
M2	13/9/2022	Mid-Flood	Fine	Moderate	9:49	1.1	M	0.55	1	0.049	75	8.03	8.06	2.77	2.76	29.77	29.74	60.6	60.5	4.51	4.49	23.7	23.8	15	16
M2	13/9/2022	Mid-Flood	Fine	Moderate	9:49	1.1	M	0.55	2			8.09		8.09		2.74		29.71		60.3		4.47		23.8	
M3	13/9/2022	Mid-Flood	Cloudy	Smooth	9:21	0.8	M	0.4	1	0.307	94	7.57	7.58	3.17	3.18	29.36	29.37	47.7	48.0	3.53	3.55	37.2	37.1	16	17
M3	13/9/2022	Mid-Flood	Cloudy	Smooth	9:21	0.8	M	0.4	2			7.58		7.58		3.19		29.37		48.3		3.57		37.0	
M1	13/9/2022	Mid-Ebb	Fine	Moderate	15:57	1	M	0.5	1	0.083	351	8.24	8.27	1.51	1.52	28.94	28.97	75.5	75.6	5.64	5.65	22.6	22.6	10	11
M1	13/9/2022	Mid-Ebb	Fine	Moderate	15:57	1	M	0.5	2			8.29		8.29		1.52		28.99		75.6		5.66		22.6	
M2	13/9/2022	Mid-Ebb	Fine	Moderate	15:38	0.9	M	0.45	1	0.056	72	8.23	8.24	1.84	1.86	29.71	29.72	71.2	71.3	5.32	5.35	25.9	25.9	26	26
M2	13/9/2022	Mid-Ebb	Fine	Moderate	15:38	0.9	M	0.45	2			8.24		8.24		1.88		29.72		71.4		5.38		25.9	
M3	13/9/2022	Mid-Ebb	Cloudy	Smooth	15:31	0.6	M	0.3	1	0.318	258	7.83	7.82	2.05	2.05	34.02	34.03	68.9	68.7	5.14	5.13	30.5	30.6	27	28
M3	13/9/2022	Mid-Ebb	Cloudy	Smooth	15:31	0.6	M	0.3	2			7.81		7.81		2.04		34.04		68.5		5.11		30.8	

Remark

1. Orange and Bold: Action Level Exceedance (For Impact Station Only)
2. Red and Bold: Limit Level Exceedance (For Impact Station Only)
3. Action Level for Turbidity: 95%-ile of baseline data or 120% of upstream control station's turbidity recorded on the same day.
4. Limit Level for Turbidity: 99%-ile of baseline data or 130% of upstream control station's turbidity recorded on the same day.
5. Action Level for SS: 95%-ile of baseline data or 120% of upstream control station's SS recorded on the same day.
6. Limit Level for SS: 99%-ile of baseline data or 130% of upstream control station's SS recorded on the same day.

For Flood Tide

Monitoring Location	DO		NTU		SS	
	AL	LL	AL	LL	AL	LL
M2(Impact Station)	1.88	1.79	43.0	52.4	81	112
M3(Impact Station)	3.28	3.14	74.3	78.0	104	167

For Ebb Tide

Monitoring Location	DO		NTU		SS	
	AL	LL	AL	LL	AL	LL
M1(Impact Station)	2.25	1.91	48.4	50.4	59	68

Contract No. SPW 07/2020 Environmental Team for Construction of Yuen Long Effluent Polishing Plant Stage 1

Water Quality Monitoring Results

Monitoring Location	Date	Tide Mode	Weather	Sea Condition	Time	Water Depth (m)	Monitoring Level	Monitoring Level (m)	Replicate	In-situ Measurement												Laboratory Analysis			
										Current Speed (m/s)	Current Direction (°)	pH		Salinity (ppt)		Temperature (degree C)		DO Saturation (%)		DO (mg/L)		Turbidity (NTU)		Total Suspended Solids (mg/L)	
												Value	Value	Value	Ave.	Value	Ave.	Value	Ave.	Value	Ave.	Value	Ave.	Value	Ave.
M1	15/9/2022	Mid-Flood	Fine	Moderate	10:53	1.3	M	0.65	1	0.064	123	7.97	7.97	2.93	2.94	30.19	30.19	98.5	98.4	7.30	7.29	28.4	28.4	45	43
M1	15/9/2022	Mid-Flood	Fine	Moderate	10:53	1.3	M	0.65	2			7.96		2.94		30.18		98.3		7.28		28.3		41	
M2	15/9/2022	Mid-Flood	Fine	Moderate	11:12	1.1	M	0.55	1	0.05	72	7.96	7.95	2.73	2.74	29.94	30.01	97.4	97.5	7.24	7.26	28.6	28.6	38	39
M2	15/9/2022	Mid-Flood	Fine	Moderate	11:12	1.1	M	0.55	2			7.93		2.74		30.07		97.6		7.28		28.7		39	
M3	15/9/2022	Mid-Flood	Cloudy	Calm	10:39	0.4	M	0.2	1	0.248	90	7.53	7.54	3.47	3.47	30.12	30.13	58.4	58.1	4.39	4.37	26.4	26.1	33	32
M3	15/9/2022	Mid-Flood	Cloudy	Calm	10:39	0.4	M	0.2	2			7.54		3.47		30.13		57.7		4.34		25.9		31	
M1	15/9/2022	Mid-Ebb	Fine	Moderate	16:49	1	M	0.5	1	0.07	46	7.94	7.93	2.86	2.87	29.83	29.84	89.1	89.2	6.63	6.64	27.6	27.6	42	41
M1	15/9/2022	Mid-Ebb	Fine	Moderate	16:49	1	M	0.5	2			7.91		2.88		29.84		89.2		6.64		27.6		39	
M2	15/9/2022	Mid-Ebb	Fine	Moderate	16:30	0.9	M	0.45	1	0.047	60	7.80	7.81	2.49	2.47	30.01	30.01	95.6	95.5	7.13	7.12	26.2	26.2	36	36
M2	15/9/2022	Mid-Ebb	Fine	Moderate	16:30	0.9	M	0.45	2			7.81		2.44		30.01		95.4		7.11		26.2		35	
M3	15/9/2022	Mid-Ebb	Cloudy	Calm	16:26	0.4	M	0.2	1	0.223	250	7.82	7.82	0.78	0.77	32.98	32.98	63.5	63.7	4.77	4.79	39.3	38.8	24	24
M3	15/9/2022	Mid-Ebb	Cloudy	Calm	16:26	0.4	M	0.2	2			7.81		0.76		32.97		63.9		4.81		38.2		24	

Remark

1. Orange and Bold: Action Level Exceedance (For Impact Station Only)
2. Red and Bold: Limit Level Exceedance (For Impact Station Only)
3. Action Level for Turbidity: 95%-ile of baseline data or 120% of upstream control station's turbidity recorded on the same day.
4. Limit Level for Turbidity: 99%-ile of baseline data or 130% of upstream control station's turbidity recorded on the same day.
5. Action Level for SS: 95%-ile of baseline data or 120% of upstream control station's SS recorded on the same day.
6. Limit Level for SS: 99%-ile of baseline data or 130% of upstream control station's SS recorded on the same day.

For Flood Tide

Monitoring Location	DO		NTU		SS	
	AL	LL	AL	LL	AL	LL
M2(Impact Station)	1.88	1.79	43.0	52.4	81	112
M3(Impact Station)	3.28	3.14	74.3	78.0	104	167

For Ebb Tide

Monitoring Location	DO		NTU		SS	
	AL	LL	AL	LL	AL	LL
M1(Impact Station)	2.25	1.91	48.4	50.4	59	68

Contract No. SPW 07/2020 Environmental Team for Construction of Yuen Long Effluent Polishing Plant Stage 1

Water Quality Monitoring Results

Monitoring Location	Date	Tide Mode	Weather	Sea Condition	Time	Water Depth (m)	Monitoring Level	Monitoring Level (m)	Replicate	In-situ Measurement												Laboratory Analysis			
										Current Speed (m/s)	Current Direction (°)	pH		Salinity (ppt)		Temperature (degree C)		DO Saturation (%)		DO (mg/L)		Turbidity (NTU)		Total Suspended Solids (mg/L)	
												Value	Value	Value	Ave.	Value	Ave.	Value	Ave.	Value	Ave.	Value	Ave.	Value	Ave.
M1	17/9/2022	Mid-Flood	Fine	Moderate	12:53	0.9	M	0.45	1	0.046	91	7.49	7.47	2.83	2.84	31.12	31.13	60.7	60.5	4.94	4.93	17.7	17.7	24	24
M1	17/9/2022	Mid-Flood	Fine	Moderate	12:53	0.9	M	0.45	2			7.44		2.84		31.14		60.3		4.91		17.3		23	
M2	17/9/2022	Mid-Flood	Fine	Moderate	13:11	0.8	M	0.4	1	0.058	71	7.44	7.43	2.86	2.87	30.84	30.83	68.8	68.6	5.32	5.31	17.3	17.3	23	25
M2	17/9/2022	Mid-Flood	Fine	Moderate	13:11	0.8	M	0.4	2			7.42		2.88		30.81		68.4		5.29		17.3		26	
M3	17/9/2022	Mid-Flood	Cloudy	Calm	12:49	0.2	M	0.1	1	0.23	94	7.82	7.82	2.20	2.21	32.11	32.12	56.5	56.9	4.12	4.15	24.0	23.8	26	26
M3	17/9/2022	Mid-Flood	Cloudy	Calm	12:49	0.2	M	0.1	2			7.81		2.21		32.13		57.2		4.18		23.6		26	
M1	17/9/2022	Mid-Ebb	Fine	Moderate	18:16	0.8	M	0.4	1	0.065	323	7.28	7.29	3.77	3.75	29.27	29.26	60.3	60.2	4.77	4.77	21.5	21.4	37	37
M1	17/9/2022	Mid-Ebb	Fine	Moderate	18:16	0.8	M	0.4	2			7.29		3.72		29.24		60.1		4.76		21.4		37	
M2	17/9/2022	Mid-Ebb	Fine	Moderate	17:57	0.7	M	0.35	1	0.096	145	7.30	7.31	3.81	3.82	30.23	30.24	57.7	57.7	4.83	4.83	21.8	21.8	57	55
M2	17/9/2022	Mid-Ebb	Fine	Moderate	17:57	0.7	M	0.35	2			7.31		3.82		30.24		57.6		4.82		21.7		53	
M3	17/9/2022	Mid-Ebb	Cloudy	Calm	17:51	0.4	M	0.2	1	0.204	261	7.67	7.66	0.92	0.93	33.68	33.68	69.9	70.2	5.17	5.19	34.0	34.5	35	34
M3	17/9/2022	Mid-Ebb	Cloudy	Calm	17:51	0.4	M	0.2	2			7.65		0.94		33.67		70.4		5.21		35.1		32	

Remark

1. Orange and Bold: Action Level Exceedance (For Impact Station Only)
2. Red and Bold: Limit Level Exceedance (For Impact Station Only)
3. Action Level for Turbidity: 95%-ile of baseline data or 120% of upstream control station's turbidity recorded on the same day.
4. Limit Level for Turbidity: 99%-ile of baseline data or 130% of upstream control station's turbidity recorded on the same day.
5. Action Level for SS: 95%-ile of baseline data or 120% of upstream control station's SS recorded on the same day.
6. Limit Level for SS: 99%-ile of baseline data or 130% of upstream control station's SS recorded on the same day.

For Flood Tide

Monitoring Location	DO		NTU		SS	
	AL	LL	AL	LL	AL	LL
M2(Impact Station)	1.88	1.79	43.0	52.4	81	112
M3(Impact Station)	3.28	3.14	74.3	78.0	104	167

For Ebb Tide

Monitoring Location	DO		NTU		SS	
	AL	LL	AL	LL	AL	LL
M1(Impact Station)	2.25	1.91	48.4	50.4	59	68

Contract No. SPW 07/2020 Environmental Team for Construction of Yuen Long Effluent Polishing Plant Stage 1

Water Quality Monitoring Results

Monitoring Location	Date	Tide Mode	Weather	Sea Condition	Time	Water Depth (m)	Monitoring Level	Monitoring Level (m)	Replicate	In-situ Measurement												Laboratory Analysis			
										Current Speed (m/s)	Current Direction (°)	pH		Salinity (ppt)		Temperature (degree C)		DO Saturation (%)		DO (mg/L)		Turbidity (NTU)		Total Suspended Solids (mg/L)	
												Value	Value	Value	Ave.	Value	Ave.	Value	Ave.	Value	Ave.	Value	Ave.	Value	Ave.
M1	20/9/2022	Mid-Flood	Fine	Moderate	18:34	1.4	M	0.7	1	0.072	213	6.84	6.84	1.04	1.05	29.14	29.13	74.2	74.3	5.61	5.62	18.1	18.1	17	18
M1	20/9/2022	Mid-Flood	Fine	Moderate	18:34	1.4	M	0.7	2			6.83		1.05		29.11		74.3		5.62		18.1		18	
M2	20/9/2022	Mid-Flood	Fine	Moderate	18:07	1.1	M	0.55	1	0.083	92	6.74	6.76	0.92	0.93	30.37	30.36	76.3	76.3	5.72	5.73	17.8	17.7	15	16
M2	20/9/2022	Mid-Flood	Fine	Moderate	18:07	1.1	M	0.55	2			6.77		0.93		30.34		76.2		5.74		17.7		16	
M3	20/9/2022	Mid-Flood	Cloudy	Calm	18:02	0.4	M	0.2	1	0.199	84	7.88	7.87	2.91	2.92	29.87	29.88	60.4	60.2	4.53	4.52	25.9	25.4	27	27
M3	20/9/2022	Mid-Flood	Cloudy	Calm	18:02	0.4	M	0.2	2			7.86		2.93		29.88		59.9		4.50		24.9		27	
M1	20/9/2022	Mid-Ebb	Fine	Moderate	9:38	1.2	M	0.6	1	0.059	106	7.20	7.21	0.61	0.62	30.80	30.80	88.8	88.6	6.60	6.56	18.6	18.6	11	12
M1	20/9/2022	Mid-Ebb	Fine	Moderate	9:38	1.2	M	0.6	2			7.21		0.62		30.80		88.4		6.52		18.5		13	
M2	20/9/2022	Mid-Ebb	Fine	Moderate	9:56	1	M	0.5	1	0.056	72	7.32	7.33	0.93	0.94	29.23	29.26	87.1	87.2	6.42	6.43	18.2	18.2	14	14
M2	20/9/2022	Mid-Ebb	Fine	Moderate	9:56	1	M	0.5	2			7.34		0.94		29.29		87.3		6.44		18.2		14	
M3	20/9/2022	Mid-Ebb	Cloudy	Calm	9:24	0.6	M	0.3	1	0.234	269	7.53	7.53	1.33	1.33	30.29	30.30	67.9	67.5	5.10	5.08	21.1	21.4	13	12
M3	20/9/2022	Mid-Ebb	Cloudy	Calm	9:24	0.6	M	0.3	2			7.52		1.32		30.31		67.1		5.05		21.8		10	

Remark

1. Orange and Bold: Action Level Exceedance (For Impact Station Only)
2. Red and Bold: Limit Level Exceedance (For Impact Station Only)
3. Action Level for Turbidity: 95%-ile of baseline data or 120% of upstream control station's turbidity recorded on the same day.
4. Limit Level for Turbidity: 99%-ile of baseline data or 130% of upstream control station's turbidity recorded on the same day.
5. Action Level for SS: 95%-ile of baseline data or 120% of upstream control station's SS recorded on the same day.
6. Limit Level for SS: 99%-ile of baseline data or 130% of upstream control station's SS recorded on the same day.

For Flood Tide

Monitoring Location	DO		NTU		SS	
	AL	LL	AL	LL	AL	LL
M2(Impact Station)	1.88	1.79	43.0	52.4	81	112
M3(Impact Station)	3.28	3.14	74.3	78.0	104	167

For Ebb Tide

Monitoring Location	DO		NTU		SS	
	AL	LL	AL	LL	AL	LL
M1(Impact Station)	2.25	1.91	48.4	50.4	59	68

Contract No. SPW 07/2020 Environmental Team for Construction of Yuen Long Effluent Polishing Plant Stage 1

Water Quality Monitoring Results

Monitoring Location	Date	Tide Mode	Weather	Sea Condition	Time	Water Depth (m)	Monitoring Level	Monitoring Level (m)	Replicate	In-situ Measurement												Laboratory Analysis			
										Current Speed (m/s)	Current Direction (°)	pH		Salinity (ppt)		Temperature (degree C)		DO Saturation (%)		DO (mg/L)		Turbidity (NTU)		Total Suspended Solids (mg/L)	
												Value	Value	Value	Ave.	Value	Ave.	Value	Ave.	Value	Ave.	Value	Ave.	Value	Ave.
M1	22/9/2022	Mid-Flood	Fine	Moderate	19:15	1.3	M	0.65	1	0.075	41	7.90	7.91	14.81	14.82	29.24	29.23	59.6	59.8	4.24	4.25	19.1	19.1	27	28
M1	22/9/2022	Mid-Flood	Fine	Moderate	19:15	1.3	M	0.65	2			7.91		14.82		29.22		59.9		4.26		19.1		29	
M2	22/9/2022	Mid-Flood	Fine	Moderate	18:57	1	M	0.5	1	0.083	72	7.89	7.89	14.57	14.58	29.17	29.18	59.4	59.5	4.21	4.22	19.4	19.4	27	28
M2	22/9/2022	Mid-Flood	Fine	Moderate	18:57	1	M	0.5	2			7.88		14.58		29.18		59.6		4.23		19.3		29	
M3	22/9/2022	Mid-Flood	Cloudy	Calm	18:49	0.4	M	0.2	1	0.276	70	7.78	7.78	7.55	7.55	30.97	30.97	64.8	64.5	4.68	4.66	20.3	20.5	25	24
M3	22/9/2022	Mid-Flood	Cloudy	Calm	18:49	0.4	M	0.2	2			7.77		7.54		30.96		64.1		4.63		20.8		23	
M1	22/9/2022	Mid-Ebb	Fine	Moderate	11:38	1.1	M	0.55	1	0.063	236	7.89	7.89	8.80	8.72	30.49	30.48	62.8	62.1	5.03	5.00	14.5	14.6	19	21
M1	22/9/2022	Mid-Ebb	Fine	Moderate	11:38	1.1	M	0.55	2			7.88		8.64		30.47		61.4		4.97		14.6		22	
M2	22/9/2022	Mid-Ebb	Fine	Moderate	11:49	0.9	M	0.45	1	0.056	92	7.89	7.88	8.77	8.76	30.53	30.56	64.6	64.8	5.13	5.15	14.9	14.9	18	18
M2	22/9/2022	Mid-Ebb	Fine	Moderate	11:49	0.9	M	0.45	2			7.87		8.74		30.58		64.9		5.17		14.9		17	
M3	22/9/2022	Mid-Ebb	Cloudy	Calm	11:38	0.6	M	0.3	1	0.303	277	7.57	7.58	5.84	5.83	29.61	29.62	68.9	69.1	5.02	5.04	13.8	13.5	20	21
M3	22/9/2022	Mid-Ebb	Cloudy	Calm	11:38	0.6	M	0.3	2			7.59		5.82		29.62		69.3		5.05		13.2		21	

Remark

1. Orange and Bold: Action Level Exceedance (For Impact Station Only)
2. Red and Bold: Limit Level Exceedance (For Impact Station Only)
3. Action Level for Turbidity: 95%-ile of baseline data or 120% of upstream control station's turbidity recorded on the same day.
4. Limit Level for Turbidity: 99%-ile of baseline data or 130% of upstream control station's turbidity recorded on the same day.
5. Action Level for SS: 95%-ile of baseline data or 120% of upstream control station's SS recorded on the same day.
6. Limit Level for SS: 99%-ile of baseline data or 130% of upstream control station's SS recorded on the same day.

For Flood Tide

Monitoring Location	DO		NTU		SS	
	AL	LL	AL	LL	AL	LL
M2(Impact Station)	1.88	1.79	43.0	52.4	81	112
M3(Impact Station)	3.28	3.14	74.3	78.0	104	167

For Ebb Tide

Monitoring Location	DO		NTU		SS	
	AL	LL	AL	LL	AL	LL
M1(Impact Station)	2.25	1.91	48.4	50.4	59	68

Contract No. SPW 07/2020 Environmental Team for Construction of Yuen Long Effluent Polishing Plant Stage 1

Water Quality Monitoring Results

Monitoring Location	Date	Tide Mode	Weather	Sea Condition	Time	Water Depth (m)	Monitoring Level	Monitoring Level (m)	Replicate	In-situ Measurement												Laboratory Analysis			
										Current Speed (m/s)	Current Direction (°)	pH		Salinity (ppt)		Temperature (degree C)		DO Saturation (%)		DO (mg/L)		Turbidity (NTU)		Total Suspended Solids (mg/L)	
												Value	Value	Value	Ave.	Value	Ave.	Value	Ave.	Value	Ave.	Value	Ave.	Value	Ave.
M1	24/9/2022	Mid-Flood	Fine	Moderate	19:56	0.8	M	0.4	1	0.053	90	7.88	7.86	5.11	5.12	29.44	29.48	54.6	54.5	4.37	4.36	14.3	14.2	13	14
M1	24/9/2022	Mid-Flood	Fine	Moderate	19:56	0.8	M	0.4	2			7.84		5.13		29.52		54.4		4.34		14.2		14	
M2	24/9/2022	Mid-Flood	Fine	Moderate	19:38	0.7	M	0.35	1	0.046	76	8.11	8.12	4.73	4.75	29.77	29.76	50.2	50.2	4.06	4.06	13.9	13.9	15	16
M2	24/9/2022	Mid-Flood	Fine	Moderate	19:38	0.7	M	0.35	2			8.12		4.77		29.74		50.1		4.05		13.9		16	
M3	24/9/2022	Mid-Flood	Cloudy	Calm	19:33	0.6	M	0.3	1	0.312	82	7.85	7.84	7.01	7.00	28.92	28.92	54.3	54.6	3.92	3.95	14.4	14.7	14	14
M3	24/9/2022	Mid-Flood	Cloudy	Calm	19:33	0.6	M	0.3	2			7.83		6.99		28.91		54.9		3.97		15.0		13	
M1	24/9/2022	Mid-Ebb	Fine	Moderate	12:57	0.9	M	0.45	1	0.063	186	8.00	8.01	12.64	12.65	29.51	29.50	60.7	60.8	4.31	4.33	16.5	16.5	10	10
M1	24/9/2022	Mid-Ebb	Fine	Moderate	12:57	0.9	M	0.45	2			8.01		12.66		29.49		60.8		4.34		16.4		10	
M2	24/9/2022	Mid-Ebb	Fine	Moderate	13:16	0.8	M	0.4	1	0.075	76	8.03	8.04	11.46	11.47	29.82	29.85	71.3	71.4	4.89	4.90	15.2	15.2	16	16
M2	24/9/2022	Mid-Ebb	Fine	Moderate	13:16	0.8	M	0.4	2			8.04		11.47		29.88		71.4		4.91		15.2		15	
M3	24/9/2022	Mid-Ebb	Cloudy	Calm	12:56	0.8	M	0.4	1	0.344	269	7.31	7.30	4.61	4.61	30.78	30.79	71.3	71.0	5.31	5.29	19.4	19.0	12	13
M3	24/9/2022	Mid-Ebb	Cloudy	Calm	12:56	0.8	M	0.4	2			7.29		4.60		30.79		70.7		5.26		18.5		14	

Remark

1. Orange and Bold: Action Level Exceedance (For Impact Station Only)
2. Red and Bold: Limit Level Exceedance (For Impact Station Only)
3. Action Level for Turbidity: 95%-ile of baseline data or 120% of upstream control station's turbidity recorded on the same day.
4. Limit Level for Turbidity: 99%-ile of baseline data or 130% of upstream control station's turbidity recorded on the same day.
5. Action Level for SS: 95%-ile of baseline data or 120% of upstream control station's SS recorded on the same day.
6. Limit Level for SS: 99%-ile of baseline data or 130% of upstream control station's SS recorded on the same day.

For Flood Tide

Monitoring Location	DO		NTU		SS	
	AL	LL	AL	LL	AL	LL
M2(Impact Station)	1.88	1.79	43.0	52.4	81	112
M3(Impact Station)	3.28	3.14	74.3	78.0	104	167

For Ebb Tide

Monitoring Location	DO		NTU		SS	
	AL	LL	AL	LL	AL	LL
M1(Impact Station)	2.25	1.91	48.4	50.4	59	68

Contract No. SPW 07/2020 Environmental Team for Construction of Yuen Long Effluent Polishing Plant Stage 1

Water Quality Monitoring Results

Monitoring Location	Date	Tide Mode	Weather	Sea Condition	Time	Water Depth (m)	Monitoring Level	Monitoring Level (m)	Replicate	In-situ Measurement												Laboratory Analysis			
										Current Speed (m/s)	Current Direction (°)	pH		Salinity (ppt)		Temperature (degree C)		DO Saturation (%)		DO (mg/L)		Turbidity (NTU)		Total Suspended Solids (mg/L)	
												Value	Value	Value	Ave.	Value	Ave.	Value	Ave.	Value	Ave.	Value	Ave.	Value	Ave.
M1	27/9/2022	Mid-Flood	Cloudy	Calm	8:32	2.2	M	1.1	1	0.341	229	7.41	7.42	11.27	11.28	28.03	28.04	61.6	61.9	4.48	4.50	13.1	12.9	26	26
M1	27/9/2022	Mid-Flood	Cloudy	Calm	8:32	2.2	M	1.1	2			7.43		11.29		28.04		62.1		4.51		12.7		25	
M2	27/9/2022	Mid-Flood	Cloudy	Calm	8:49	1.2	M	0.6	1	0.319	288	7.31	7.32	10.13	10.12	28.26	28.27	56.9	57.1	4.11	4.12	14.0	14.4	30	29
M2	27/9/2022	Mid-Flood	Cloudy	Calm	8:49	1.2	M	0.6	2			7.32		10.11		28.28		57.2		4.13		14.8		28	
M3	27/9/2022	Mid-Flood	Fine	Moderate	8:34	1.4	M	0.7	1	0.068	34	7.29	7.27	13.97	13.97	28.94	28.94	57.8	57.9	4.12	4.13	20.5	20.5	61	60
M3	27/9/2022	Mid-Flood	Fine	Moderate	8:34	1.4	M	0.7	2			7.25		13.96		28.93		57.9		4.13		20.5		58	
M1	27/9/2022	Mid-Ebb	Cloudy	Calm	14:58	2	M	1	1	0.327	239	7.26	7.27	8.30	8.31	31.93	31.94	63.1	62.9	4.58	4.56	20.3	20.0	26	27
M1	27/9/2022	Mid-Ebb	Cloudy	Calm	14:58	2	M	1	2			7.28		8.32		31.95		62.6		4.54		19.7		27	
M2	27/9/2022	Mid-Ebb	Cloudy	Calm	14:39	1.2	M	0.6	1	0.306	258	7.22	7.22	8.13	8.14	31.62	31.62	65.9	65.7	4.74	4.73	17.8	18.2	30	29
M2	27/9/2022	Mid-Ebb	Cloudy	Calm	14:39	1.2	M	0.6	2			7.21		8.14		31.61		65.5		4.71		18.6		28	
M3	27/9/2022	Mid-Ebb	Fine	Moderate	14:50	1.2	M	0.6	1	0.072	265	7.33	7.32	9.48	9.46	29.23	29.24	59.1	59.2	4.32	4.34	15.8	15.9	30	29
M3	27/9/2022	Mid-Ebb	Fine	Moderate	14:50	1.2	M	0.6	2			7.31		9.44		29.24		59.3		4.35		15.9		27	

Remark

1. Orange and Bold: Action Level Exceedance (For Impact Station Only)
2. Red and Bold: Limit Level Exceedance (For Impact Station Only)
3. Action Level for Turbidity: 95%-ile of baseline data or 120% of upstream control station's turbidity recorded on the same day.
4. Limit Level for Turbidity: 99%-ile of baseline data or 130% of upstream control station's turbidity recorded on the same day.
5. Action Level for SS: 95%-ile of baseline data or 120% of upstream control station's SS recorded on the same day.
6. Limit Level for SS: 99%-ile of baseline data or 130% of upstream control station's SS recorded on the same day.

For Flood Tide

Monitoring Location	DO		NTU		SS	
	AL	LL	AL	LL	AL	LL
M2(Impact Station)	1.88	1.79	43.0	52.4	81	112
M3(Impact Station)	3.28	3.14	74.3	78.0	104	167

For Ebb Tide

Monitoring Location	DO		NTU		SS	
	AL	LL	AL	LL	AL	LL
M1(Impact Station)	2.25	1.91	48.4	50.4	59	68

Contract No. SPW 07/2020 Environmental Team for Construction of Yuen Long Effluent Polishing Plant Stage 1

Water Quality Monitoring Results

Monitoring Location	Date	Tide Mode	Weather	Sea Condition	Time	Water Depth (m)	Monitoring Level	Monitoring Level (m)	Replicate	In-situ Measurement												Laboratory Analysis			
										Current Speed (m/s)	Current Direction (°)	pH		Salinity (ppt)		Temperature (degree C)		DO Saturation (%)		DO (mg/L)		Turbidity (NTU)		Total Suspended Solids (mg/L)	
												Value	Value	Value	Ave.	Value	Ave.	Value	Ave.	Value	Ave.	Value	Ave.	Value	Ave.
M1	29/9/2022	Mid-Flood	Fine	Moderate	9:52	1.1	M	0.55	1	0.092	76	7.54	7.55	6.09	6.09	28.40	28.35	82.2	82.3	6.17	6.18	21.9	22.0	24	23
M1	29/9/2022	Mid-Flood	Fine	Moderate	9:52	1.1	M	0.55	2			7.55		6.08		28.30		82.4		6.19		22.0		22	
M2	29/9/2022	Mid-Flood	Fine	Moderate	10:12	1	M	0.5	1	0.048	310	7.34	7.34	6.13	6.14	28.11	28.13	84.9	84.9	6.31	6.30	20.3	20.2	30	30
M2	29/9/2022	Mid-Flood	Fine	Moderate	10:12	1	M	0.5	2			7.33		6.14		28.14		84.8		6.29		20.2		29	
M3	29/9/2022	Mid-Flood	Cloudy	Smooth	9:46	0.8	M	0.4	1	0.316	96	7.39	7.39	5.82	5.83	28.02	28.03	56.7	56.4	4.24	4.22	31.3	30.9	39	39
M3	29/9/2022	Mid-Flood	Cloudy	Smooth	9:46	0.8	M	0.4	2			7.38		5.84		28.03		56.1		4.19		30.4		38	
M1	29/9/2022	Mid-Ebb	Fine	Moderate	16:09	1	M	0.5	1	0.045	51	7.22	7.23	6.56	6.55	27.91	27.92	81.1	81.0	6.06	6.06	21.8	21.8	11	12
M1	29/9/2022	Mid-Ebb	Fine	Moderate	16:09	1	M	0.5	2			7.23		6.54		27.93		80.9		6.05		21.7		13	
M2	29/9/2022	Mid-Ebb	Fine	Moderate	15:45	0.9	M	0.45	1	0.055	71	7.21	7.22	6.44	6.47	27.74	27.75	80.7	80.7	6.04	6.03	21.9	21.9	30	29
M2	29/9/2022	Mid-Ebb	Fine	Moderate	15:45	0.9	M	0.45	2			7.23		6.49		27.76		80.6		6.02		21.9		28	
M3	29/9/2022	Mid-Ebb	Cloudy	Smooth	15:45	0.6	M	0.3	1	0.295	267	7.13	7.14	4.91	4.92	30.12	30.12	60.8	61.0	4.56	4.58	22.9	22.7	32	32
M3	29/9/2022	Mid-Ebb	Cloudy	Smooth	15:45	0.6	M	0.3	2			7.14		4.92		30.11		61.2		4.59		22.4		31	

Remark

1. Orange and Bold: Action Level Exceedance (For Impact Station Only)
2. Red and Bold: Limit Level Exceedance (For Impact Station Only)
3. Action Level for Turbidity: 95%-ile of baseline data or 120% of upstream control station's turbidity recorded on the same day.
4. Limit Level for Turbidity: 99%-ile of baseline data or 130% of upstream control station's turbidity recorded on the same day.
5. Action Level for SS: 95%-ile of baseline data or 120% of upstream control station's SS recorded on the same day.
6. Limit Level for SS: 99%-ile of baseline data or 130% of upstream control station's SS recorded on the same day.

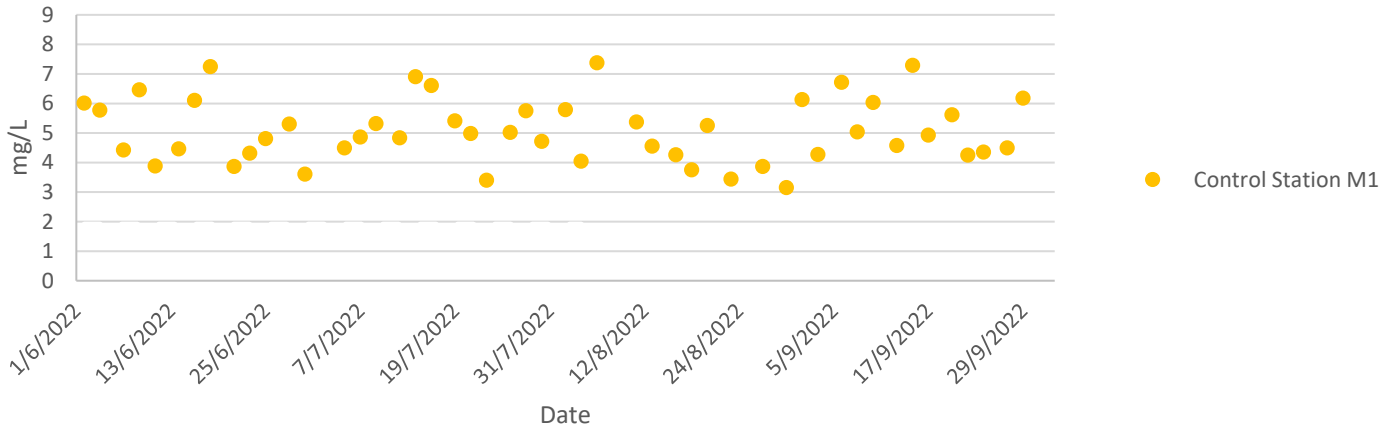
For Flood Tide

Monitoring Location	DO		NTU		SS	
	AL	LL	AL	LL	AL	LL
M2(Impact Station)	1.88	1.79	43.0	52.4	81	112
M3(Impact Station)	3.28	3.14	74.3	78.0	104	167

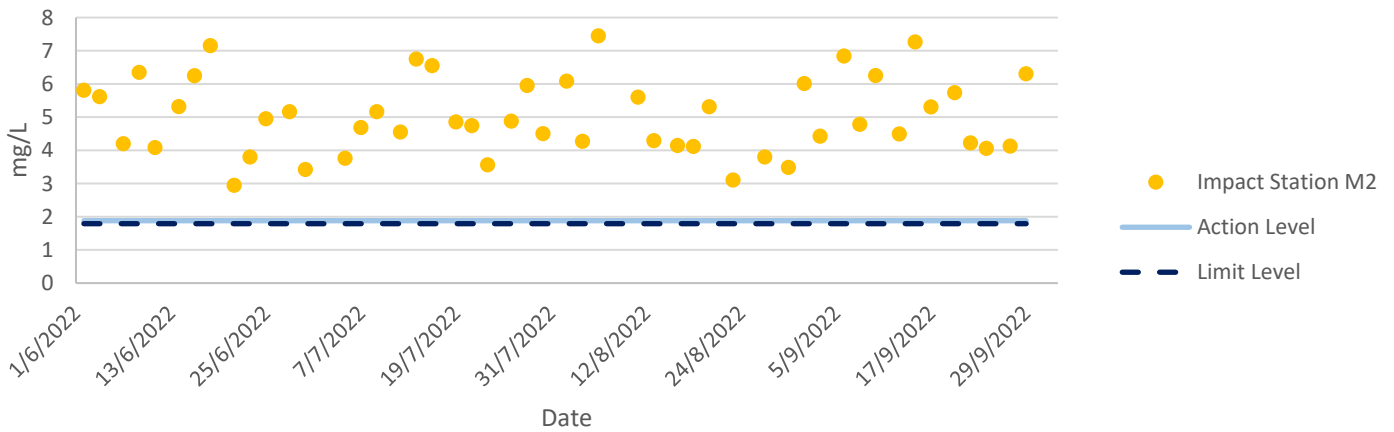
For Ebb Tide

Monitoring Location	DO		NTU		SS	
	AL	LL	AL	LL	AL	LL
M1(Impact Station)	2.25	1.91	48.4	50.4	59	68

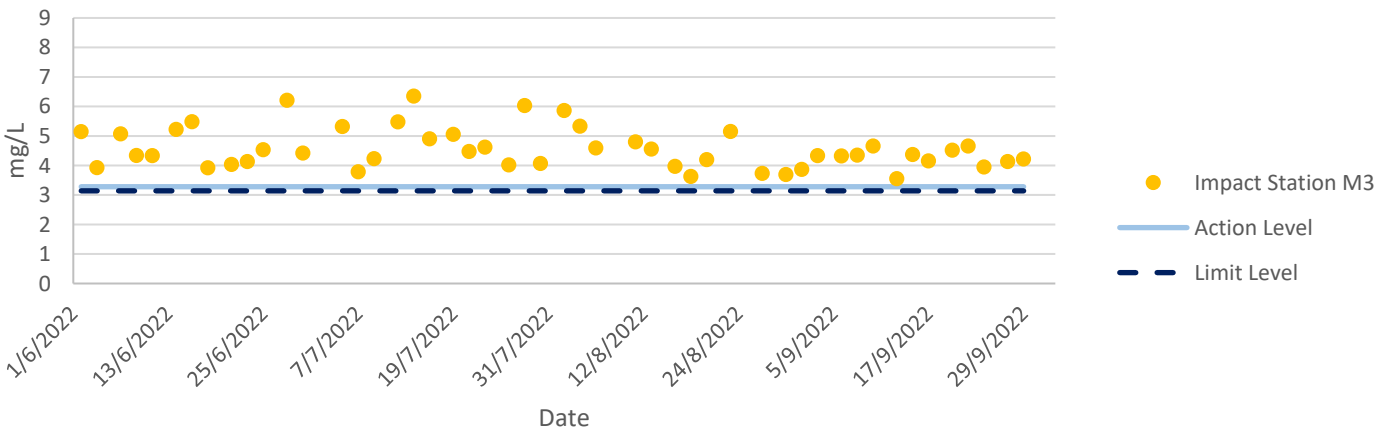
Dissolved Oxygen at Mid-Flood Tide



Dissolved Oxygen at Mid-Flood Tide

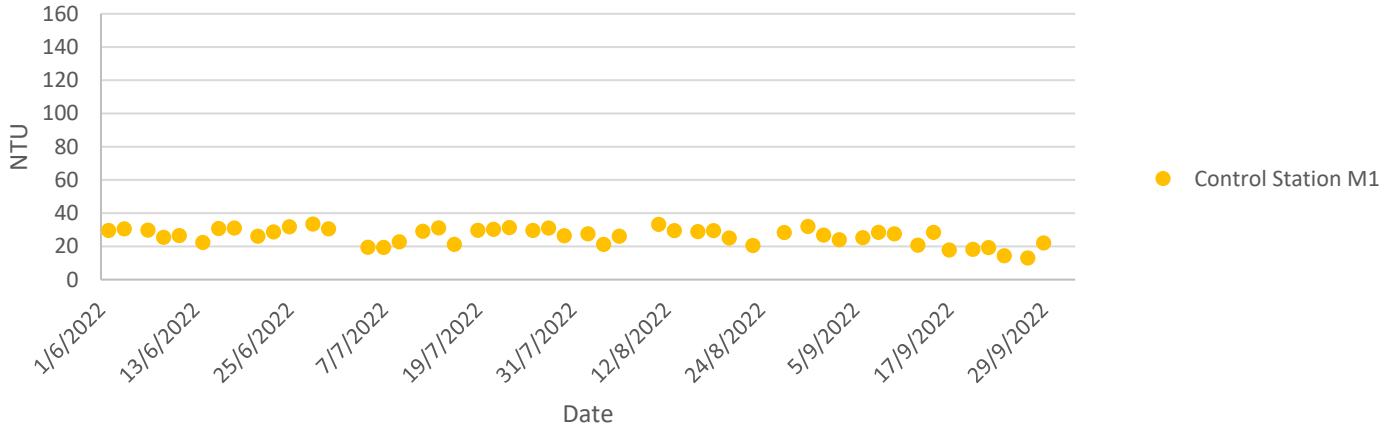


Dissolved Oxygen at Mid-Flood Tide

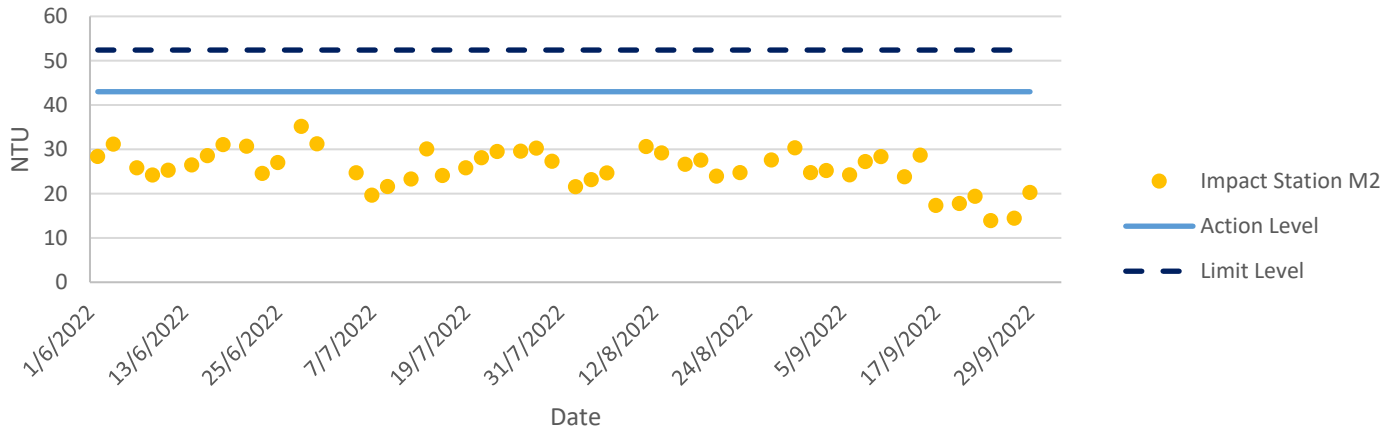


Water Quality Monitoring Results

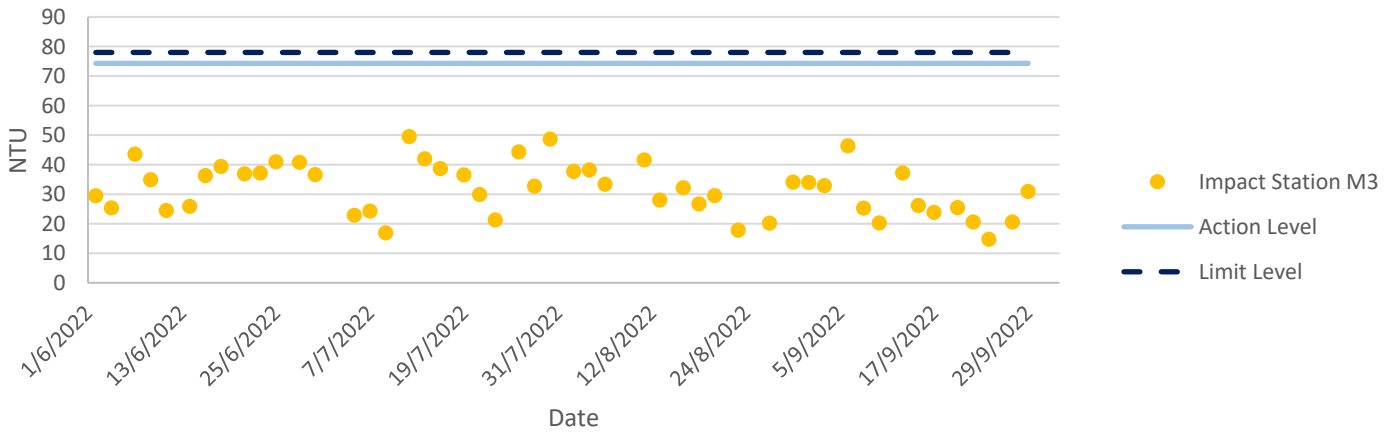
Turbidity at Mid-Flood Tide



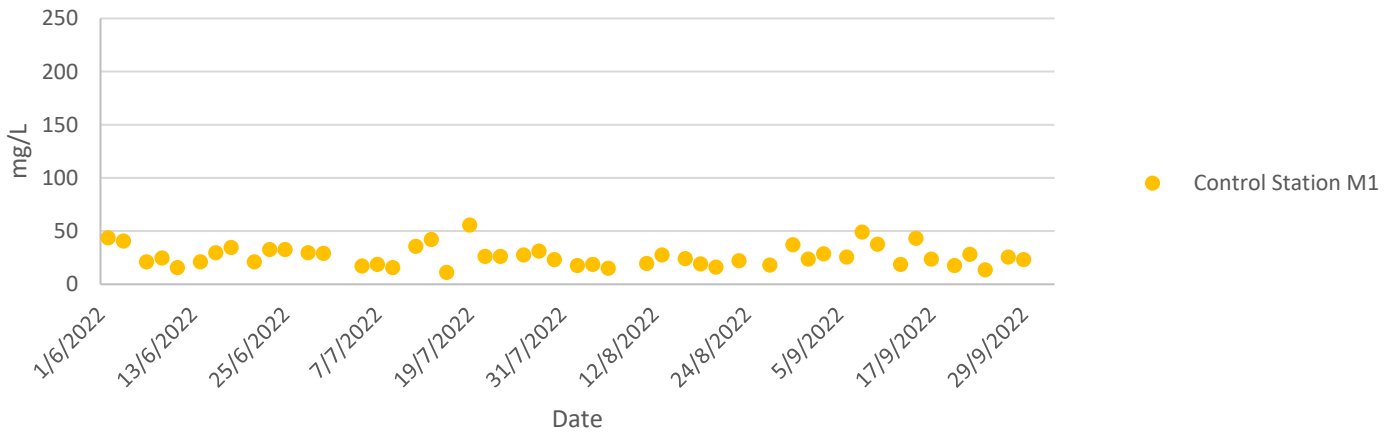
Turbidity at Mid-Flood Tide



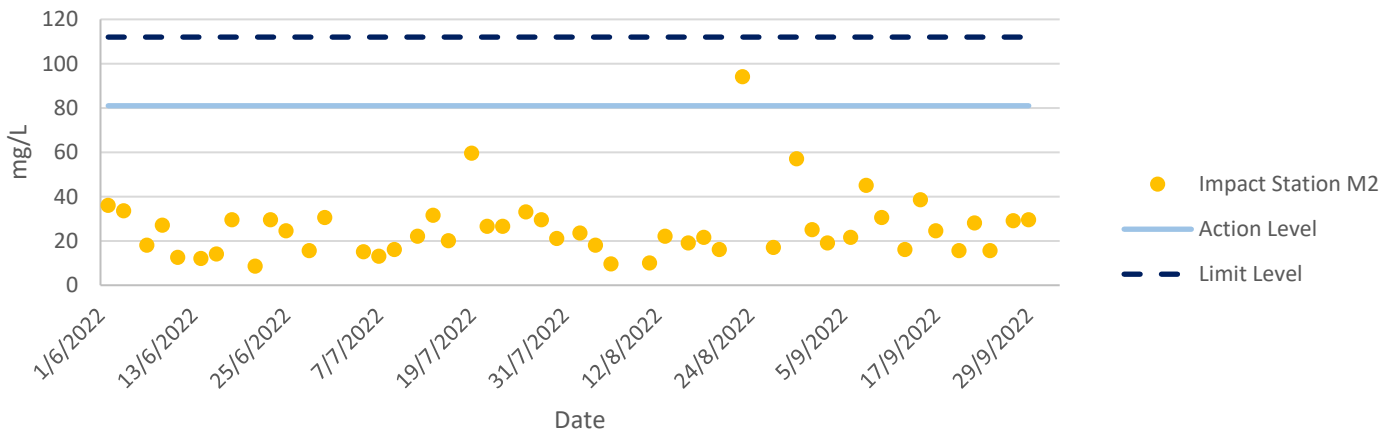
Turbidity at Mid-Flood Tide



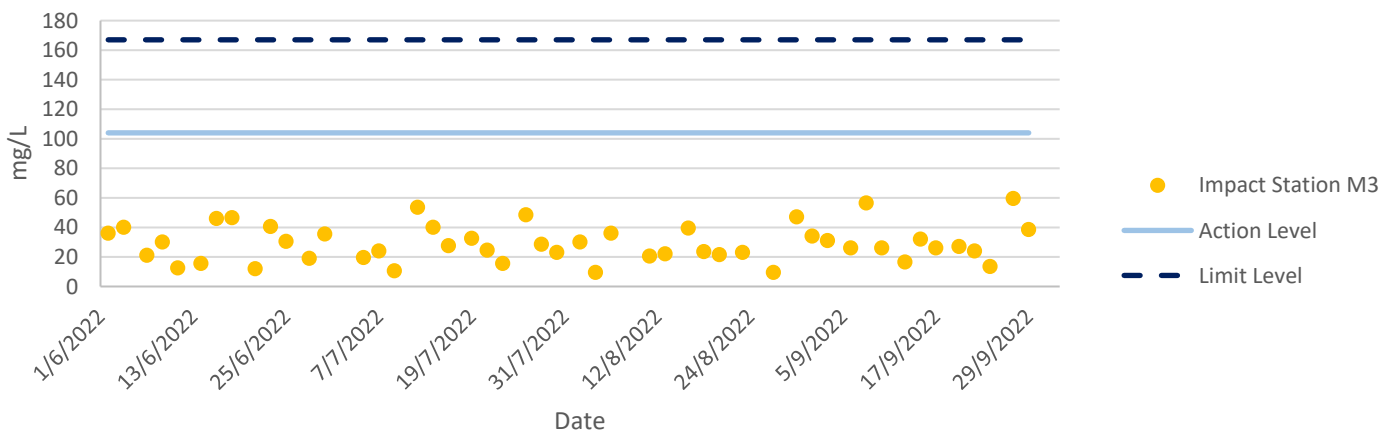
Total Suspended Solids at Mid-Flood Tide



Total Suspended Solids at Mid-Flood Tide

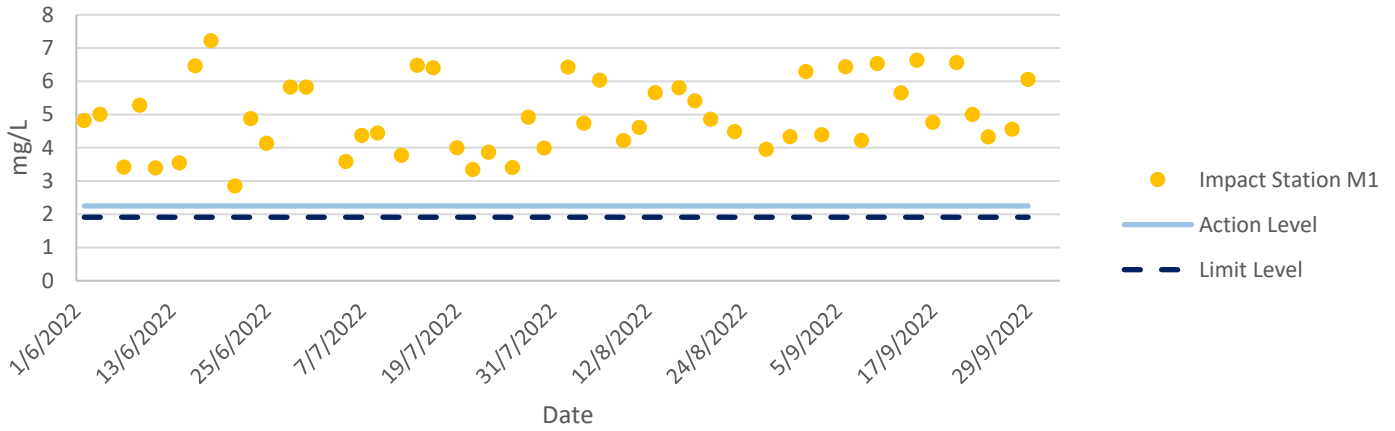


Total Suspended Solids at Mid-Flood Tide

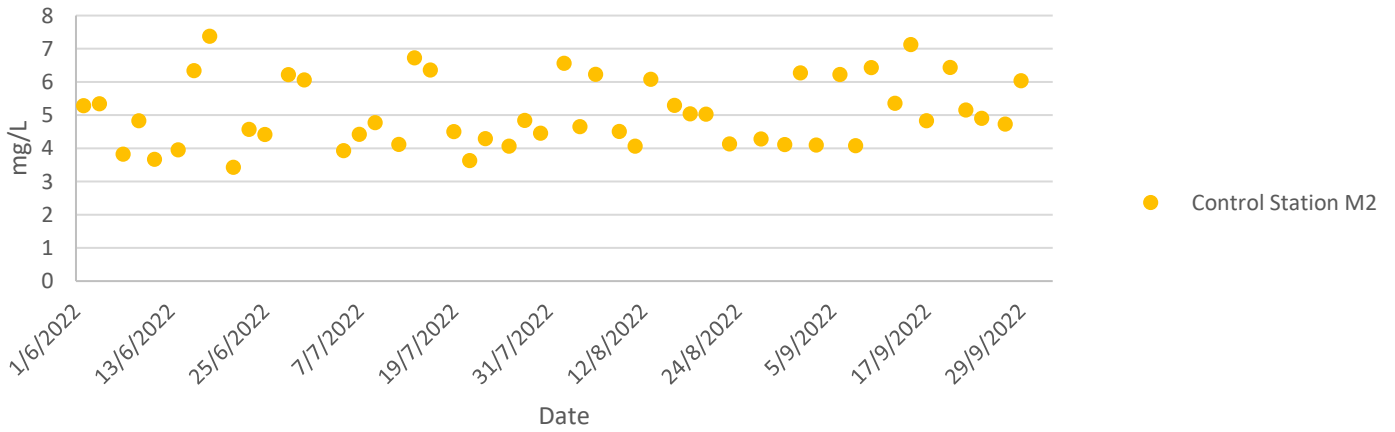


Water Quality Monitoring Results

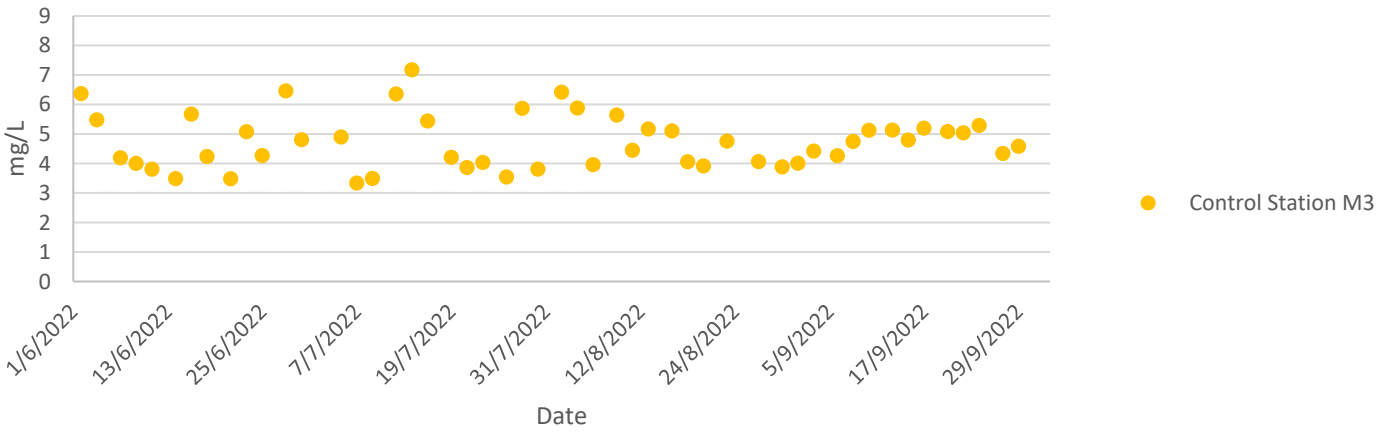
Dissolved Oxygen at Mid-Ebb Tide



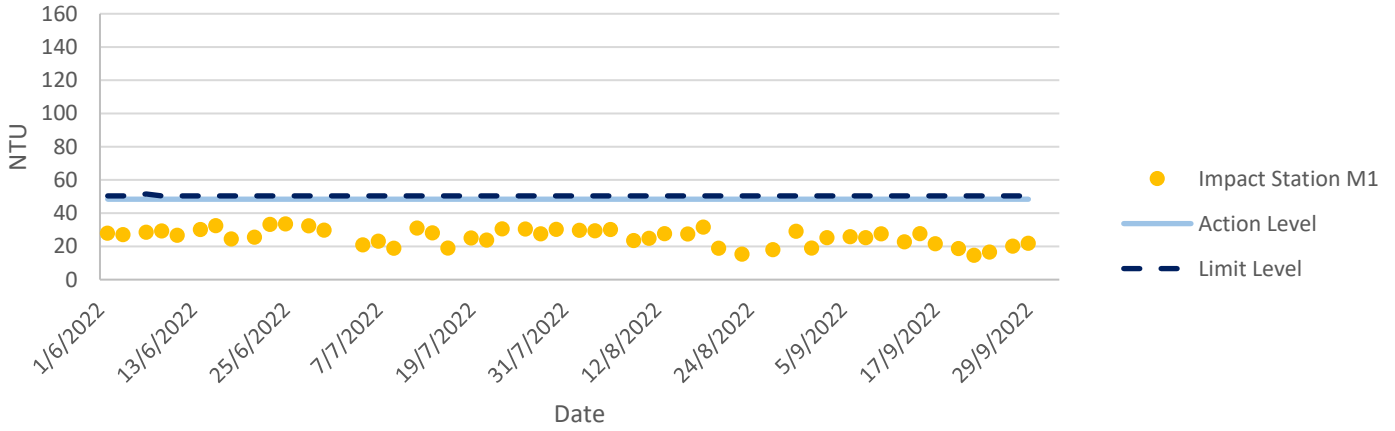
Dissolved Oxygen at Mid-Ebb Tide



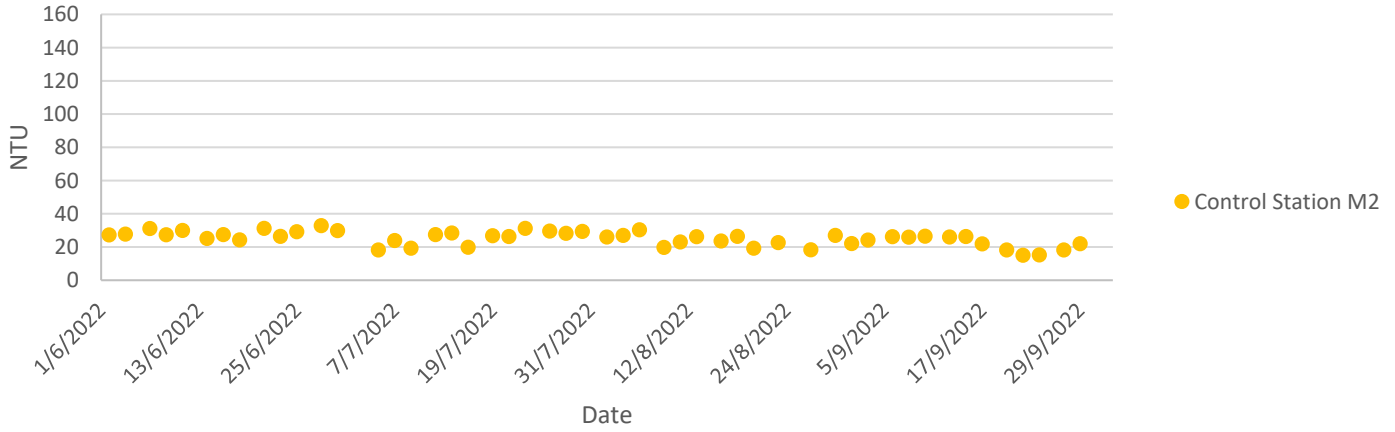
Dissolved Oxygen at Mid-Ebb Tide



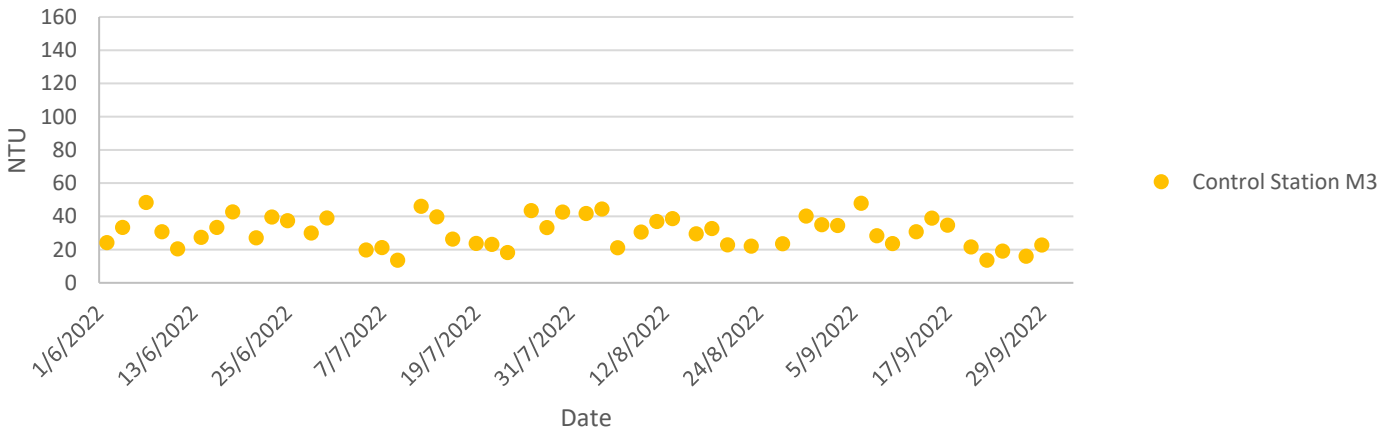
Turbidity at Mid-Ebb Tide



Turbidity at Mid-Ebb Tide

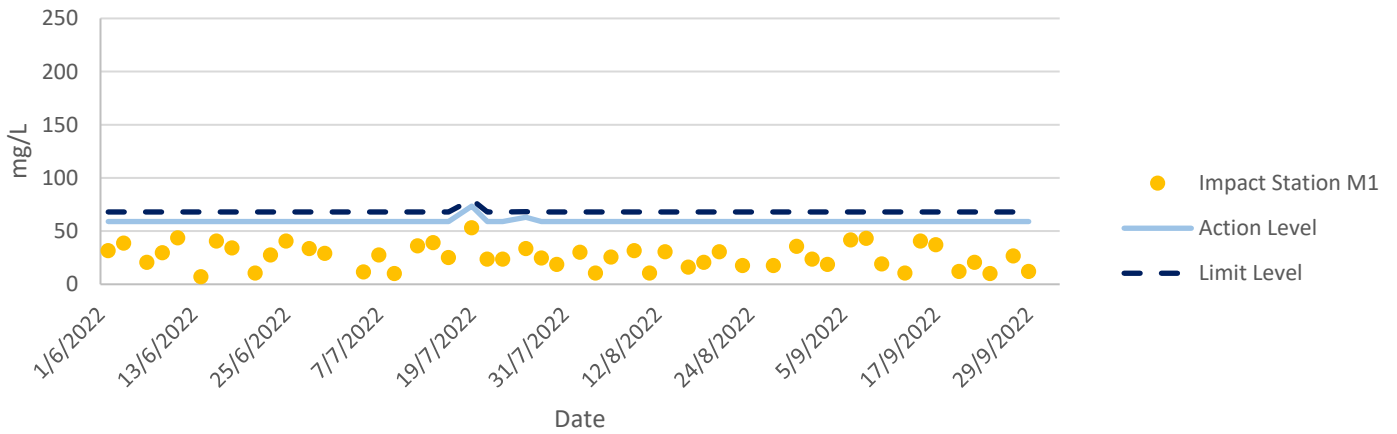


Turbidity at Mid-Ebb Tide

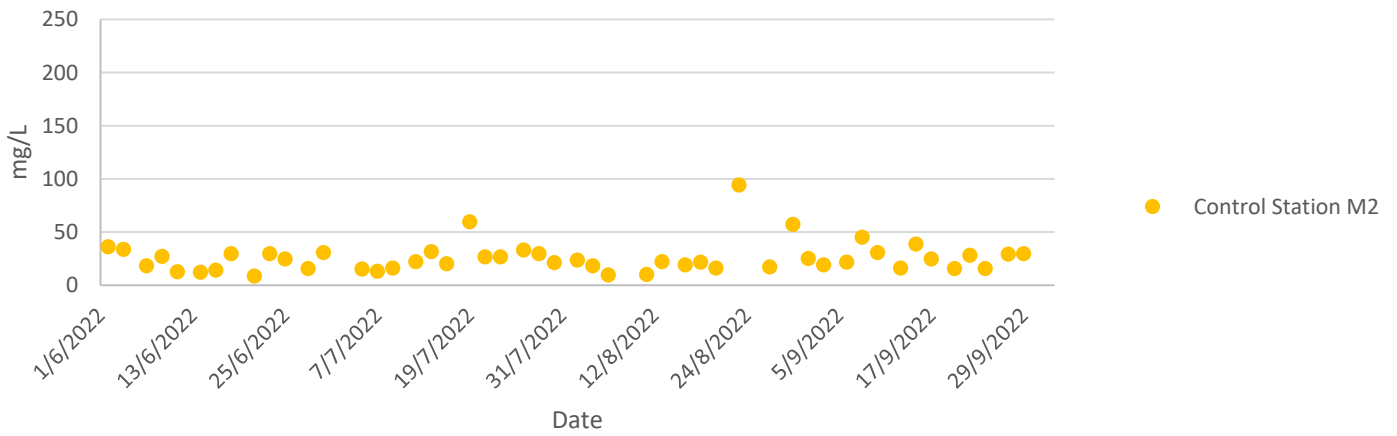


Water Quality Monitoring Results

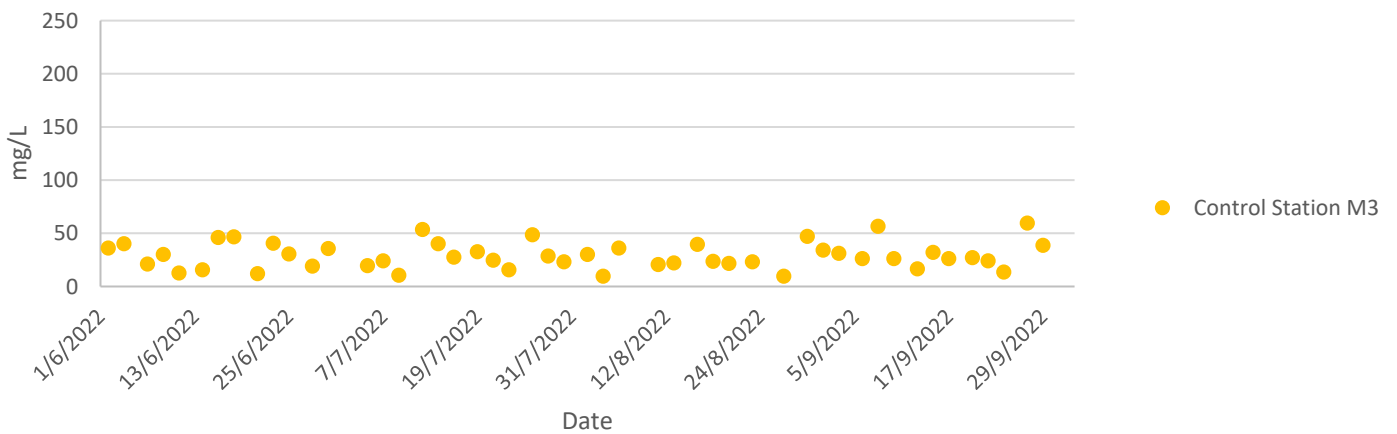
Total Suspended Solids at Mid-Ebb Tide



Total Suspended Solids at Mid-Ebb Tide



Total Suspended Solids at Mid-Ebb Tide



Water Quality Monitoring Results

Ecology Monitoring Results

Ecology Monitoring Results for

Contract No. SPW 07/2020

Environmental Team for Construction of Yuen long Effluent Polishing Plant Stage 1

Appendix F.1 Ecological Bird Monitoring Result (15 and 16 September 2022)

Date (dd/mm/yyyy)	Daytime/Night time	Season	Area	Transect/Point Count	Point Count (Location)/Transect Impact	Habitat	Common Name	Scientific Name	Abundance	Distribution in Hong Kong ²	Principal Status ³	Level of Concern ⁴	Protection Status in China ⁵	China Red Data Book ⁶	Red List of China's Vertebrates ¹⁰	IUCN Red List ⁷ (v.2020-3)	Species of Conservation Importance	Wetland Dependent
15/09/2022	Daytime	Wet Season	FLW	Transect	FLW	Pond-FLW	Great Egret	<i>Ardea alba</i>	2	Common	R,WV	PRC (RC)	-	-	LC	LC	Y	Y
15/09/2022	Daytime	Wet Season	FLW	Transect	FLW	Pond-FLW	Chinese Pond Heron	<i>Ardeola bacchus</i>	3	Common	R	PRC (RC)	-	-	LC	LC	Y	Y
15/09/2022	Daytime	Wet Season	FLW	Transect	FLW	Pond-FLW	Oriental Magpie Robin	<i>Copsychus saularis</i>	1	Abundant	R	-	-	-	LC	LC	N	N
15/09/2022	Daytime	Wet Season	FLW	Transect	FLW	Plantation-FLW	Azure-winged Magpie	<i>Cyanopica cyanus</i>	1	Introduced	R	-	-	-	LC	LC	N	N
15/09/2022	Daytime	Wet Season	FLW	Transect	FLW	In-flight	Black Drongo	<i>Dicrurus macrocercus</i>	7	Common	SV	-	-	-	LC	LC	N	N
15/09/2022	Daytime	Wet Season	FLW	Transect	FLW	Pond-FLW	Little Egret	<i>Egretta garzetta</i>	2	Common	R	PRC (RC)	-	-	LC	LC	Y	Y
15/09/2022	Daytime	Wet Season	FLW	Transect	FLW	Pond-FLW	Intermediate Egret	<i>Egretta intermedia</i>	3	Common	PM	RC	-	-	LC	LC	Y	Y
15/09/2022	Daytime	Wet Season	FLW	Transect	FLW	Plantation-FLW	Masked Laughingthrush	<i>Garrulax perspicillatus</i>	3	Abundant	R	-	-	-	LC	LC	N	N
15/09/2022	Daytime	Wet Season	FLW	Transect	FLW	In-flight	Barn Swallow	<i>Hirundo rustica</i>	5	Abundant	PM,SV	-	-	-	LC	LC	N	N
15/09/2022	Daytime	Wet Season	FLW	Transect	FLW	Pond-FLW	White Wagtail	<i>Motacilla alba</i>	2	Common	PM,WV	-	-	-	LC	LC	N	N
15/09/2022	Daytime	Wet Season	FLW	Transect	FLW	Pond-FLW	Spotted Dove	<i>Spilopelia chinensis</i>	4	Abundant	R	-	-	-	LC	LC	N	N
15/09/2022	Daytime	Wet Season	FLW	Transect	FLW	Pond-FLW	Eurasian Collared Dove	<i>Streptopelia decaocto</i>	1	Found in Mai Po, Tsim Bei Tsui, Fung Lok Wai	-	-	-	-	LC	LC	N	N
15/09/2022	Daytime	Wet Season	FLW	Point Count	FLW1	Pond-FLW	Chinese Pond Heron	<i>Ardeola bacchus</i>	2	Common	R	PRC (RC)	-	-	LC	LC	Y	Y
15/09/2022	Daytime	Wet Season	FLW	Point Count	FLW1	Pond-FLW	Greater Coucal	<i>Centropus sinensis</i>	1	Common	R	-	Class II	Vulnerable	LC	LC	Y	N
15/09/2022	Daytime	Wet Season	FLW	Point Count	FLW1	Pond-FLW	Azure-winged Magpie	<i>Cyanopica cyanus</i>	3	Introduced	R	-	-	-	LC	LC	N	N
15/09/2022	Daytime	Wet Season	FLW	Point Count	FLW1	Pond-FLW	Yellow Bittern	<i>Ixobrychus sinensis</i>	1	Uncommon	PM,SV	-	-	-	LC	LC	N	Y
15/09/2022	Daytime	Wet Season	FLW	Point Count	FLW1	Pond-FLW	Yellow-bellied Prinia	<i>Prinia flaviventris</i>	2	Common	R	-	-	-	LC	LC	N	N
15/09/2022	Daytime	Wet Season	FLW	Point Count	FLW1	Pond-FLW	Plain Prinia	<i>Prinia inornata</i>	2	Common	R	-	-	-	LC	LC	N	N
15/09/2022	Daytime	Wet Season	FLW	Point Count	FLW2	Pond-FLW	Plain Prinia	<i>Prinia inornata</i>	4	Common	R	-	-	-	LC	LC	N	N
15/09/2022	Daytime	Wet Season	FLW	Point Count	FLW2	Pond-FLW	Spotted Dove	<i>Spilopelia chinensis</i>	2	Abundant	R	-	-	-	LC	LC	N	N
15/09/2022	Daytime	Wet Season	FLW	Point Count	FLW2	Pond-FLW	Japanese White-eye	<i>Zosterops japonicus</i>	1	Abundant	R	-	-	-	LC	LC	N	N
15/09/2022	Daytime	Wet Season	FLW	Point Count	FLW3	Pond-FLW	Oriental Magpie Robin	<i>Copsychus saularis</i>	1	Abundant	R	-	-	-	LC	LC	N	N
15/09/2022	Daytime	Wet Season	FLW	Point Count	FLW3	Pond-FLW	Plain Prinia	<i>Prinia inornata</i>	3	Common	R	-	-	-	LC	LC	N	N
15/09/2022	Daytime	Wet Season	FLW	Point Count	FLW3	Pond-FLW	Chinese Bulbul	<i>Pycnonotus sinensis</i>	2	Abundant	R	-	-	-	LC	LC	N	N
15/09/2022	Daytime	Wet Season	FLW	Point Count	FLW3	Pond-FLW	Spotted Dove	<i>Spilopelia chinensis</i>	1	Abundant	R	-	-	-	LC	LC	N	N
15/09/2022	Daytime	Wet Season	FLW	Point Count	FLW4	Pond-FLW	Large-billed Crow	<i>Corvus macrorhynchos</i>	1	Common	R	-	-	-	LC	LC	N	N
15/09/2022	Daytime	Wet Season	FLW	Point Count	FLW4	Pond-FLW	Black Drongo	<i>Dicrurus macrocercus</i>	1	Common	SV	-	-	-	LC	LC	N	N

15/09/2022	Daytime	Wet Season	FLW	Point Count	FLW4	Pond-FLW	Black-collared Starling	<i>Gracupica nigricollis</i>	2	Common	R	-	-	-	LC	LC	N	N
15/09/2022	Daytime	Wet Season	FLW	Point Count	FLW4	Pond-FLW	Great Cormorant	<i>Phalacrocorax carbo</i>	1	Common	WV	PRC	-	-	LC	LC	Y	Y
15/09/2022	Daytime	Wet Season	FLW	Point Count	FLW4	Pond-FLW	Plain Prinia	<i>Prinia inornata</i>	2	Common	R	-	-	-	LC	LC	N	N
15/09/2022	Daytime	Wet Season	FLW	Point Count	FLW4	Pond-FLW	Red-whiskered Bulbul	<i>Pycnonotus jocosus</i>	2	Abundant	R	-	-	-	LC	LC	N	N
15/09/2022	Daytime	Wet Season	FLW	Point Count	FLW5	Pond-FLW	Common Kingfisher	<i>Alcedo atthis</i>	1	Common	PM,WV	-	-	-	LC	LC	N	Y
15/09/2022	Daytime	Wet Season	FLW	Point Count	FLW5	Pond-FLW	White-breasted Waterhen	<i>Amaurornis phoenicurus</i>	2	Common	R	-	-	-	LC	LC	N	Y
15/09/2022	Daytime	Wet Season	FLW	Point Count	FLW5	Pond-FLW	Chinese Pond Heron	<i>Ardeola bacchus</i>	1	Common	R	PRC (RC)	-	-	LC	LC	Y	Y
15/09/2022	Daytime	Wet Season	FLW	Point Count	FLW5	Pond-FLW	Azure-winged Magpie	<i>Cyanopica cyanus</i>	1	Introduced	R	-	-	-	LC	LC	N	N
15/09/2022	Daytime	Wet Season	FLW	Point Count	FLW5	Pond-FLW	White Wagtail	<i>Motacilla alba</i>	2	Common	PM,WV	-	-	-	LC	LC	N	N
15/09/2022	Daytime	Wet Season	FLW	Point Count	FLW5	Pond-FLW	Eurasian Tree Sparrow	<i>Passer montanus</i>	6	Abundant	R	-	-	-	LC	LC	N	N
15/09/2022	Daytime	Wet Season	FLW	Point Count	FLW5	Pond-FLW	Red-whiskered Bulbul	<i>Pycnonotus jocosus</i>	5	Abundant	R	-	-	-	LC	LC	N	N
15/09/2022	Daytime	Wet Season	FLW	Point Count	FLW5	Pond-FLW	Eurasian Collared Dove	<i>Streptopelia decaocto</i>	3	Found in Mai Po, Tsim Bei Tsui, Fung Lok Wai	-	-	-	-	LC	LC	N	N
15/09/2022	Daytime	Wet Season	FLW	Point Count	FLW5	Pond-FLW	Little Grebe	<i>Tachybaptus ruficollis</i>	2	Common	Common	LC	-	-	LC	LC	Y	Y
15/09/2022	Daytime	Wet Season	FLW	Point Count	FLW6	Pond-FLW	Crested Myna	<i>Acridotheres cristatellus</i>	3	Common	R	-	-	-	LC	LC	N	N
15/09/2022	Daytime	Wet Season	FLW	Point Count	FLW6	Pond-FLW	Great Egret	<i>Ardea alba</i>	1	Common	R,WV	PRC (RC)	-	-	LC	LC	Y	Y
15/09/2022	Daytime	Wet Season	FLW	Point Count	FLW6	Pond-FLW	Grey Heron	<i>Ardea cinerea</i>	1	Common	WV	PRC	-	-	LC	LC	Y	Y
15/09/2022	Daytime	Wet Season	FLW	Point Count	FLW6	Pond-FLW	Chinese Pond Heron	<i>Ardeola bacchus</i>	2	Common	R	PRC (RC)	-	-	LC	LC	Y	Y
15/09/2022	Daytime	Wet Season	FLW	Point Count	FLW6	Pond-FLW	Little Egret	<i>Egretta garzetta</i>	2	Common	R	PRC (RC)	-	-	LC	LC	Y	Y
15/09/2022	Daytime	Wet Season	FLW	Point Count	FLW6	Pond-FLW	Intermediate Egret	<i>Egretta intermedia</i>	4	Common	PM	RC	-	-	LC	LC	Y	Y
15/09/2022	Daytime	Wet Season	FLW	Point Count	FLW6	Pond-FLW	Spotted Dove	<i>Spilopelia chinensis</i>	2	Abundant	R	-	-	-	LC	LC	N	N
15/09/2022	Daytime	Wet Season	FLW	Point Count	FLW7	Pond-FLW	Chinese Pond Heron	<i>Ardeola bacchus</i>	3	Common	R	PRC (RC)	-	-	LC	LC	Y	Y
15/09/2022	Daytime	Wet Season	FLW	Point Count	FLW7	Pond-FLW	Little Egret	<i>Egretta garzetta</i>	3	Common	R	PRC (RC)	-	-	LC	LC	Y	Y
15/09/2022	Daytime	Wet Season	FLW	Point Count	FLW7	Pond-FLW	Intermediate Egret	<i>Egretta intermedia</i>	5	Common	PM	RC	-	-	LC	LC	Y	Y
15/09/2022	Daytime	Wet Season	FLW	Point Count	FLW7	Pond-FLW	White Wagtail	<i>Motacilla alba</i>	1	Common	PM,WV	-	-	-	LC	LC	N	N
15/09/2022	Daytime	Wet Season	FLW	Point Count	FLW7	Pond-FLW	Plain Prinia	<i>Prinia inornata</i>	2	Common	R	-	-	-	LC	LC	N	N
15/09/2022	Daytime	Wet Season	FLW	Point Count	FLW7	Pond-FLW	Spotted Dove	<i>Spilopelia chinensis</i>	2	Abundant	R	-	-	-	LC	LC	N	N
15/09/2022	Daytime	Wet Season	NSW	Transect	NSW	Modified Watercourse	Great Egret	<i>Ardea alba</i>	1	Common	R,WV	PRC (RC)	-	-	LC	LC	Y	Y
15/09/2022	Daytime	Wet Season	NSW	Transect	NSW	Modified Watercourse	Chinese Pond Heron	<i>Ardeola bacchus</i>	2	Common	R	PRC (RC)	-	-	LC	LC	Y	Y
15/09/2022	Daytime	Wet Season	NSW	Transect	NSW	In-flight	Black Drongo	<i>Dicrurus macrocercus</i>	3	Common	SV	-	-	-	LC	LC	N	N
15/09/2022	Daytime	Wet Season	NSW	Transect	NSW	Plantation-NSW	Masked Laughingthrush	<i>Garrulax perspicillatus</i>	2	Abundant	R	-	-	-	LC	LC	N	N

15/09/2022	Daytime	Wet Season	NSW	Transect	NSW	Plantation-NSW	Black-collared Starling	<i>Gracupica nigricollis</i>	2	Common	R	-	-	-	LC	LC	N	N
15/09/2022	Daytime	Wet Season	NSW	Transect	NSW	In-flight	Barn Swallow	<i>Hirundo rustica</i>	4	Abundant	PM,SV	-	-	-	LC	LC	N	N
15/09/2022	Daytime	Wet Season	NSW	Transect	NSW	Plantation-NSW	Common Tailorbird	<i>Orthotomus sutorius</i>	2	Common	R	-	-	-	LC	LC	N	N
15/09/2022	Daytime	Wet Season	NSW	Transect	NSW	Plantation-NSW	Eurasian Tree Sparrow	<i>Passer montanus</i>	5	Abundant	R	-	-	-	LC	LC	N	N
15/09/2022	Daytime	Wet Season	NSW	Transect	NSW	Plantation-NSW	Yellow-bellied Prinia	<i>Prinia flaviventris</i>	2	Common	R	-	-	-	LC	LC	N	N
15/09/2022	Daytime	Wet Season	NSW	Transect	NSW	Plantation-NSW	Spotted Dove	<i>Spilopelia chinensis</i>	2	Abundant	R	-	-	-	LC	LC	N	N
15/09/2022	Daytime	Wet Season	NSW	Transect	NSW	Plantation-NSW	Japanese White-eye	<i>Zosterops japonicus</i>	3	Abundant	R	-	-	-	LC	LC	N	N
15/09/2022	Daytime	Wet Season	NSW	Point Count	NSW1	Pond-NSW	Crested Myna	<i>Acridotheres cristatellus</i>	2	Common	R	-	-	-	LC	LC	N	N
15/09/2022	Daytime	Wet Season	NSW	Point Count	NSW1	Pond-NSW	Grey Heron	<i>Ardea cinerea</i>	1	Common	WV	PRC	-	-	LC	LC	Y	Y
15/09/2022	Daytime	Wet Season	NSW	Point Count	NSW1	Pond-NSW	Chinese Pond Heron	<i>Ardeola bacchus</i>	6	Common	R	PRC (RC)	-	-	LC	LC	Y	Y
15/09/2022	Daytime	Wet Season	NSW	Point Count	NSW1	Pond-NSW	Oriental Magpie Robin	<i>Copsychus saularis</i>	2	Abundant	R	-	-	-	LC	LC	N	N
15/09/2022	Daytime	Wet Season	NSW	Point Count	NSW1	Pond-NSW	Black-collared Starling	<i>Gracupica nigricollis</i>	2	Common	R	-	-	-	LC	LC	N	N
15/09/2022	Daytime	Wet Season	NSW	Point Count	NSW1	Pond-NSW	White Wagtail	<i>Motacilla alba</i>	1	Common	PM,WV	-	-	-	LC	LC	N	N
15/09/2022	Daytime	Wet Season	NSW	Point Count	NSW1	Reedbed	Yellow-bellied Prinia	<i>Prinia flaviventris</i>	2	Common	R	-	-	-	LC	LC	N	N
15/09/2022	Daytime	Wet Season	NSW	Point Count	NSW1	Pond-NSW	Plain Prinia	<i>Prinia inornata</i>	1	Common	R	-	-	-	LC	LC	N	N
15/09/2022	Daytime	Wet Season	NSW	Point Count	NSW1	Pond-NSW	Spotted Dove	<i>Spilopelia chinensis</i>	2	Abundant	R	-	-	-	LC	LC	N	N
15/09/2022	Daytime	Wet Season	NSW	Point Count	NSW1	Pond-NSW	Japanese White-eye	<i>Zosterops japonicus</i>	2	Abundant	R	-	-	-	LC	LC	N	N
15/09/2022	Daytime	Wet Season	NSW	Point Count	SP/NSW1	Modified Watercourse	Crested Myna	<i>Acridotheres cristatellus</i>	2	Common	R	-	-	-	LC	LC	N	N
15/09/2022	Daytime	Wet Season	NSW	Point Count	SP/NSW1	Modified Watercourse	Common Sandpiper	<i>Actitis hypoleucos</i>	4	Common	PM,WV	-	-	-	LC	LC	N	Y
15/09/2022	Daytime	Wet Season	NSW	Point Count	SP/NSW1	Modified Watercourse	Chinese Pond Heron	<i>Ardeola bacchus</i>	2	Common	R	PRC (RC)	-	-	LC	LC	Y	Y
15/09/2022	Daytime	Wet Season	NSW	Point Count	SP/NSW1	Modified Watercourse	Little Egret	<i>Egretta garzetta</i>	3	Common	R	PRC (RC)	-	-	LC	LC	Y	Y
15/09/2022	Daytime	Wet Season	NSW	Point Count	SP/NSW1	Modified Watercourse	Black-winged Stilt	<i>Himantopus himantopus</i>	4	Common	PM	RC	-	-	LC	LC	Y	Y
16/09/2022	Night-time	Wet Season	NSW	Point Count	SP/NSW1	In-flight	Black Kite	<i>Milvus migrans</i>	7	Common	R,WV	(RC)	Class II	-	LC	LC	Y	Y
15/09/2022	Daytime	Wet Season	NSW	Point Count	SP/NSW2	Mangrove	Crested Myna	<i>Acridotheres cristatellus</i>	2	Common	R	-	-	-	LC	LC	N	N
15/09/2022	Daytime	Wet Season	NSW	Point Count	SP/NSW2	Mangrove	Large-billed Crow	<i>Corvus macrorhynchos</i>	2	Common	R	-	-	-	LC	LC	N	N
16/09/2022	Night-time	Wet Season	NSW	Point Count	SP/NSW2	In-flight	Large-billed Crow	<i>Corvus macrorhynchos</i>	4	Common	R	-	-	-	LC	LC	N	N
15/09/2022	Daytime	Wet Season	NSW	Point Count	SP/NSW2	Modified Watercourse	Little Egret	<i>Egretta garzetta</i>	2	Common	R	PRC (RC)	-	-	LC	LC	Y	Y
15/09/2022	Daytime	Wet Season	NSW	Point Count	SP/NSW2	Plantation-NSW	Asian Koel	<i>Eudynamys scolopaceus</i>	1	Common	R	-	-	-	LC	LC	N	N
15/09/2022	Daytime	Wet Season	NSW	Point Count	SP/NSW2	Plantation-NSW	Red-whiskered Bulbul	<i>Pycnonotus jocosus</i>	3	Abundant	R	-	-	-	LC	LC	N	N
15/09/2022	Daytime	Wet Season	NSW	Point Count	SP/NSW2	Plantation-NSW	Chinese Bulbul	<i>Pycnonotus sinensis</i>	3	Abundant	R	-	-	-	LC	LC	N	N
15/09/2022	Daytime	Wet Season	NSW	Point Count	SP/NSW2	Plantation-NSW	Spotted Dove	<i>Spilopelia chinensis</i>	2	Abundant	R	-	-	-	LC	LC	N	N
15/09/2022	Daytime	Wet Season	NSW	Point Count	SP/NSW3	Modified Watercourse	Common Sandpiper	<i>Actitis hypoleucos</i>	2	Common	PM,WV	-	-	-	LC	LC	N	Y

15/09/2022	Daytime	Wet Season	NSW	Point Count	SP/NSW3	Modified Watercourse	Great Egret	<i>Ardea alba</i>	2	Common	R,WV	PRC (RC)	-	-	LC	LC	Y	Y
15/09/2022	Daytime	Wet Season	NSW	Point Count	SP/NSW3	Modified Watercourse	Grey Heron	<i>Ardea cinerea</i>	1	Common	WV	PRC	-	-	LC	LC	Y	Y
15/09/2022	Daytime	Wet Season	NSW	Point Count	SP/NSW3	Mangrove	Chinese Pond Heron	<i>Ardeola bacchus</i>	2	Common	R	PRC (RC)	-	-	LC	LC	Y	Y
16/09/2022	Night-time	Wet Season	NSW	Point Count	SP/NSW3	In-flight	Chinese Pond Heron	<i>Ardeola bacchus</i>	3	Common	R	PRC (RC)	-	-	LC	LC	Y	Y
15/09/2022	Daytime	Wet Season	NSW	Point Count	SP/NSW3	In-flight	Black Drongo	<i>Dicrurus macrocercus</i>	1	Common	SV	-	-	-	LC	LC	N	N
15/09/2022	Daytime	Wet Season	NSW	Point Count	SP/NSW3	Mangrove	Little Egret	<i>Egretta garzetta</i>	3	Common	R	PRC (RC)	-	-	LC	LC	Y	Y
16/09/2022	Night-time	Wet Season	NSW	Point Count	SP/NSW3	In-flight	Little Egret	<i>Egretta garzetta</i>	3	Common	R	PRC (RC)	-	-	LC	LC	Y	Y
15/09/2022	Daytime	Wet Season	NSW	Point Count	SP/NSW3	Modified Watercourse	Black-winged Stilt	<i>Himantopus himantopus</i>	5	Common	PM	RC	-	-	LC	LC	Y	Y
15/09/2022	Daytime	Wet Season	NSW	Point Count	SP/NSW3	Modified Watercourse	Plain Prinia	<i>Prinia inornata</i>	3	Common	R	-	-	-	LC	LC	N	N
15/09/2022	Daytime	Wet Season	NSW	Point Count	SP/NSW3	Modified Watercourse	Common Greenshank	<i>Tringa nebularia</i>	2	Abundant	PM,WV	RC	-	-	LC	LC	Y	Y
15/09/2022	Daytime	Wet Season	NSW	Point Count	SP/NSW3	Modified Watercourse	Common Redshank	<i>Tringa totanus</i>	3	Common	PM	RC	-	-	LC	LC	Y	Y
15/09/2022	Daytime	Wet Season	YLIE	Transect	YLIE-CW	Modified Watercourse	Crested Myna	<i>Acridotheres cristatellus</i>	2	Common	R	-	-	-	LC	LC	N	N
15/09/2022	Daytime	Wet Season	YLIE	Transect	YLIE-CW	Modified Watercourse	Little Egret	<i>Egretta garzetta</i>	2	Common	R	PRC (RC)	-	-	LC	LC	Y	Y
15/09/2022	Daytime	Wet Season	YLIE	Transect	YLIE-CW	Modified Watercourse	Black-winged Stilt	<i>Himantopus himantopus</i>	2	Common	PM	RC	-	-	LC	LC	Y	Y
15/09/2022	Daytime	Wet Season	YLIE	Transect	YLIE-CW	Modified Watercourse	Barn Swallow	<i>Hirundo rustica</i>	3	Abundant	PM,SV	-	-	-	LC	LC	N	N
15/09/2022	Daytime	Wet Season	YLIE	Transect	YLIE-CW	Modified Watercourse	Little Grebe	<i>Tachybaptus ruficollis</i>	2	Common	Common	LC	-	-	LC	LC	Y	Y
15/09/2022	Daytime	Wet Season	YLIE	Transect	YLIE-CW	Modified Watercourse	Common Greenshank	<i>Tringa nebularia</i>	2	Abundant	PM,WV	RC	-	-	LC	LC	Y	Y

Notes:

(1) All wild birds are protected under Wild Animals Protection Ordinance (Cap. 170).

(2) AFCD (2021). Hong Kong Biodiversity Database.

(3) Carey et al. (2001): R=resident; WV=winter visitor; SV=summer visitor; PM=passage migrant; Sp=spring; A=autumn;

(4) Fellowes et al. (2002): GC=Global Concern; LC=Local Concern; RC=Regional Concern; PRC=Potential Regional Concern; PGC: Potential Global Concern. Letters in parentheses indicate that the assessment is on the basis of restrictedness in nesting and/or roosting sites rather than in general occurrence.

(5) List of Wild Animals under State Protection (promulgated by State Forestry Administration and Ministry of Agriculture on 14 January, 1989).

(6) Zheng, G. M. and Wang, Q. S. (1998). China Red Data Book

(7) IUCN 2021. The IUCN Red List of Threatened Species. Version 2020-3.

(9) Wetland-dependent species (including wetland-dependent species and waterbirds).

(10) Jiang et al. (2016). Red List of China's Vertebrates

Appendix F.2.1 Ecological Bird Monitoring Diversity (All avifauna species in Point Count Method) in All Habitats (15 and 16 September 2022)

Scientific Name	Count	P	Ln(P)	P*Ln(P)	P*Ln(P) ²
<i>Acridotheres cristatellus</i>	9	0.05	-2.99573	-0.14979	0.448721
<i>Actitis hypoleucos</i>	6	0.033333	-3.4012	-0.11337	0.385605
<i>Alcedo atthis</i>	1	0.005556	-5.19296	-0.02885	0.149816
<i>Amaurornis phoenicurus</i>	2	0.011111	-4.49981	-0.05	0.224981
<i>Ardea alba</i>	3	0.016667	-4.09434	-0.06824	0.279394
<i>Ardea cinerea</i>	3	0.016667	-4.09434	-0.06824	0.279394
<i>Ardeola bacchus</i>	21	0.116667	-2.14843	-0.25065	0.538507
<i>Centropus sinensis</i>	1	0.005556	-5.19296	-0.02885	0.149816
<i>Copsychus saularis</i>	3	0.016667	-4.09434	-0.06824	0.279394
<i>Corvus macrorhynchos</i>	7	0.038889	-3.24705	-0.12627	0.410018
<i>Cyanopica cyanus</i>	4	0.022222	-3.80666	-0.08459	0.322015
<i>Dicrurus macrocercus</i>	2	0.011111	-4.49981	-0.05	0.224981
<i>Egretta garzetta</i>	16	0.088889	-2.42037	-0.21514	0.520727
<i>Egretta intermedia</i>	9	0.05	-2.99573	-0.14979	0.448721
<i>Eudynamis scolopaceus</i>	1	0.005556	-5.19296	-0.02885	0.149816
<i>Gracupica nigricollis</i>	4	0.022222	-3.80666	-0.08459	0.322015
<i>Himantopus himantopus</i>	9	0.05	-2.99573	-0.14979	0.448721
<i>Ixobrychus sinensis</i>	1	0.005556	-5.19296	-0.02885	0.149816
<i>Milvus migrans</i>	7	0.038889	-3.24705	-0.12627	0.410018
<i>Motacilla alba</i>	4	0.022222	-3.80666	-0.08459	0.322015
<i>Passer montanus</i>	6	0.033333	-3.4012	-0.11337	0.385605
<i>Phalacrocorax carbo</i>	1	0.005556	-5.19296	-0.02885	0.149816
<i>Prinia flaviventris</i>	4	0.022222	-3.80666	-0.08459	0.322015
<i>Prinia inornata</i>	17	0.094444	-2.35974	-0.22286	0.525903
<i>Pycnonotus jocosus</i>	10	0.055556	-2.89037	-0.16058	0.464125
<i>Pycnonotus sinensis</i>	5	0.027778	-3.58352	-0.09954	0.356711
<i>Spilopelia chinensis</i>	11	0.061111	-2.79506	-0.17081	0.477423
<i>Streptopelia decaocto</i>	3	0.016667	-4.09434	-0.06824	0.279394
<i>Tachybaptus ruficollis</i>	2	0.011111	-4.49981	-0.05	0.224981
<i>Tringa nebularia</i>	2	0.011111	-4.49981	-0.05	0.224981
<i>Tringa totanus</i>	3	0.016667	-4.09434	-0.06824	0.279394
<i>Zosterops japonicus</i>	3	0.016667	-4.09434	-0.06824	0.279394
Total	180	1	-122.238	-3.14029	10.43423
Richness	32				
SS	10.4				
SQ	9.86				
H	3.14				
S²_H	0				

Appendix F.2.2 Ecological Bird Monitoring Diversity (Avifauna species of conservation importance in Point Count Method) in All Habitats (15 and 16 September 2022)

Scientific Name	Count	P	Ln(P)	P*Ln(P)	P*Ln(P) ²
<i>Ardea alba</i>	3	0.038961	-3.24519	-0.12644	0.41031
<i>Ardea cinerea</i>	3	0.038961	-3.24519	-0.12644	0.41031

<i>Ardeola bacchus</i>	21	0.272727	-1.29928	-0.35435	0.460401
<i>Centropus sinensis</i>	1	0.012987	-4.34381	-0.05641	0.245047
<i>Egretta garzetta</i>	16	0.207792	-1.57122	-0.32649	0.512981
<i>Egretta intermedia</i>	9	0.116883	-2.14658	-0.2509	0.538575
<i>Himantopus himantopus</i>	9	0.116883	-2.14658	-0.2509	0.538575
<i>Milvus migrans</i>	7	0.090909	-2.3979	-0.21799	0.522718
<i>Phalacrocorax carbo</i>	1	0.012987	-4.34381	-0.05641	0.245047
<i>Tachybaptus ruficollis</i>	2	0.025974	-3.65066	-0.09482	0.346164
<i>Tringa nebularia</i>	2	0.025974	-3.65066	-0.09482	0.346164
<i>Tringa totanus</i>	3	0.038961	-3.24519	-0.12644	0.41031
Total	77	1	-35.2861	-2.0824	4.986601
Richness	12				
SS	4.99				
SQ	4.34				
H	2.08				
S²_H	0.01				

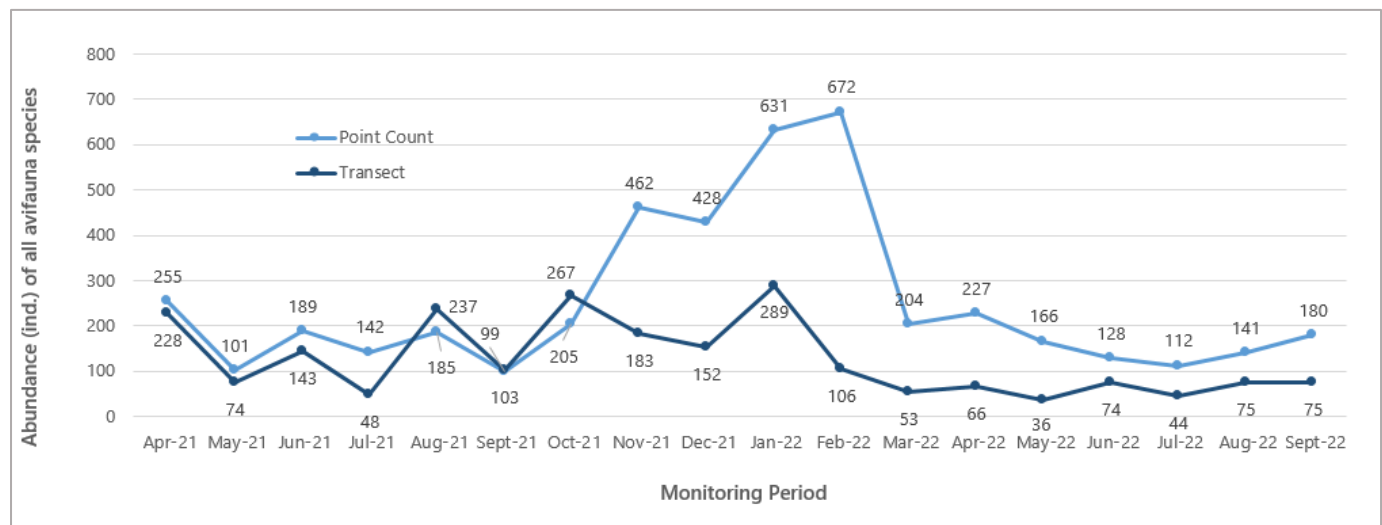
Appendix F.2.3 Ecological Bird Monitoring Diversity (All avifauna species in Transect Walk Method) in All Habitats (15 and 16 September 2022)

Scientific Name	Count	P	Ln(P)	P*Ln(P)	P*Ln(P) ²
<i>Acridotheres cristatellus</i>	2	0.026667	-3.62434	-0.09665	0.350289
<i>Ardea alba</i>	3	0.04	-3.21888	-0.12876	0.414446
<i>Ardeola bacchus</i>	5	0.066667	-2.70805	-0.18054	0.488902
<i>Copsychus saularis</i>	1	0.013333	-4.31749	-0.05757	0.248543
<i>Cyanopica cyanus</i>	1	0.013333	-4.31749	-0.05757	0.248543
<i>Dicrurus macrocercus</i>	10	0.133333	-2.0149	-0.26865	0.541311
<i>Egretta garzetta</i>	4	0.053333	-2.93119	-0.15633	0.458234
<i>Egretta intermedia</i>	3	0.04	-3.21888	-0.12876	0.414446
<i>Garrulax perspicillatus</i>	5	0.066667	-2.70805	-0.18054	0.488902
<i>Gracupica nigricollis</i>	2	0.026667	-3.62434	-0.09665	0.350289
<i>Himantopus himantopus</i>	2	0.026667	-3.62434	-0.09665	0.350289
<i>Hirundo rustica</i>	12	0.16	-1.83258	-0.29321	0.537337
<i>Motacilla alba</i>	2	0.026667	-3.62434	-0.09665	0.350289
<i>Orthotomus sutorius</i>	2	0.026667	-3.62434	-0.09665	0.350289
<i>Passer montanus</i>	5	0.066667	-2.70805	-0.18054	0.488902
<i>Prinia flaviventris</i>	2	0.026667	-3.62434	-0.09665	0.350289
<i>Spilopelia chinensis</i>	6	0.08	-2.52573	-0.20206	0.510344
<i>Streptopelia decaocto</i>	1	0.013333	-4.31749	-0.05757	0.248543
<i>Tachybaptus ruficollis</i>	2	0.026667	-3.62434	-0.09665	0.350289
<i>Tringa nebularia</i>	2	0.026667	-3.62434	-0.09665	0.350289
<i>Zosterops japonicus</i>	3	0.04	-3.21888	-0.12876	0.414446
Total	75	1	-69.0324	-2.79402	8.305216
Richness	21				
SS	8.305216				
SQ	7.806563				
H	2.794023				
S²_H	0.008426				

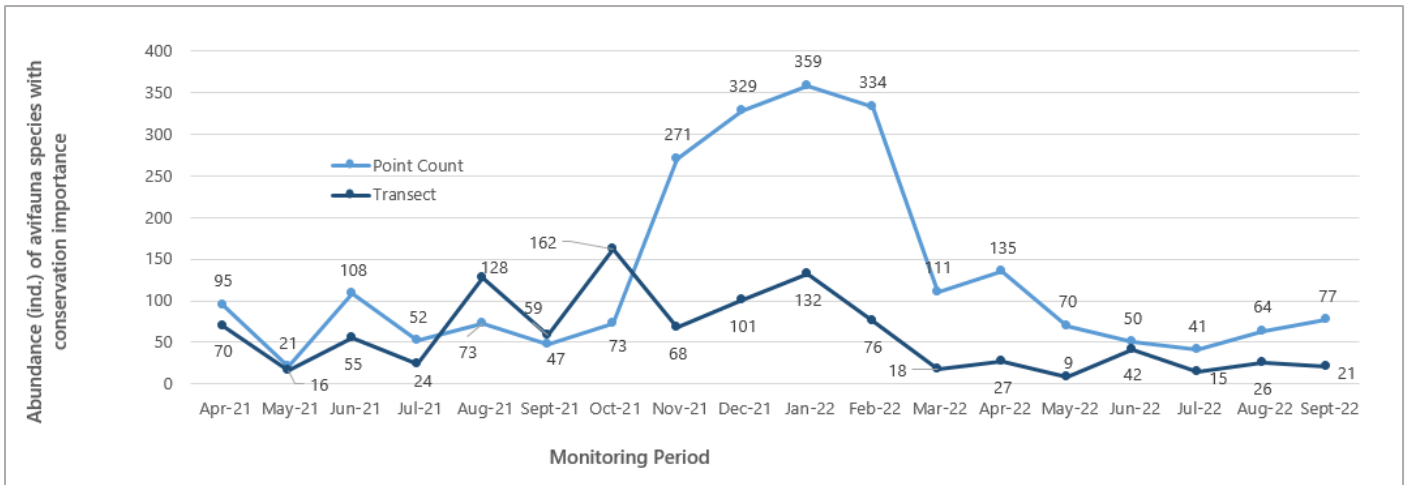
Appendix F.2.4 Ecological Bird Monitoring Diversity (Avifauna species of conservation importance in Transect Walk Method) in All Habitats (15 and 16 September 2022)

Scientific Name	Count	P	Ln(P)	P*Ln(P)	P*Ln(P) ²
<i>Ardea alba</i>	3	0.142857	-1.94591	-0.27799	0.540938
<i>Ardeola bacchus</i>	5	0.238095	-1.43508	-0.34169	0.490349
<i>Egretta garzetta</i>	4	0.190476	-1.65823	-0.31585	0.523756
<i>Egretta intermedia</i>	3	0.142857	-1.94591	-0.27799	0.540938
<i>Himantopus himantopus</i>	2	0.095238	-2.35138	-0.22394	0.526568
<i>Tachybaptus ruficollis</i>	2	0.095238	-2.35138	-0.22394	0.526568
<i>Tringa nebularia</i>	2	0.095238	-2.35138	-0.22394	0.526568
Total	21	1	-14.0393	-1.88534	3.675686
Richness	7				
SS	3.675686				
SQ	3.55449				
H	1.885336				
S²_H	0.012574				

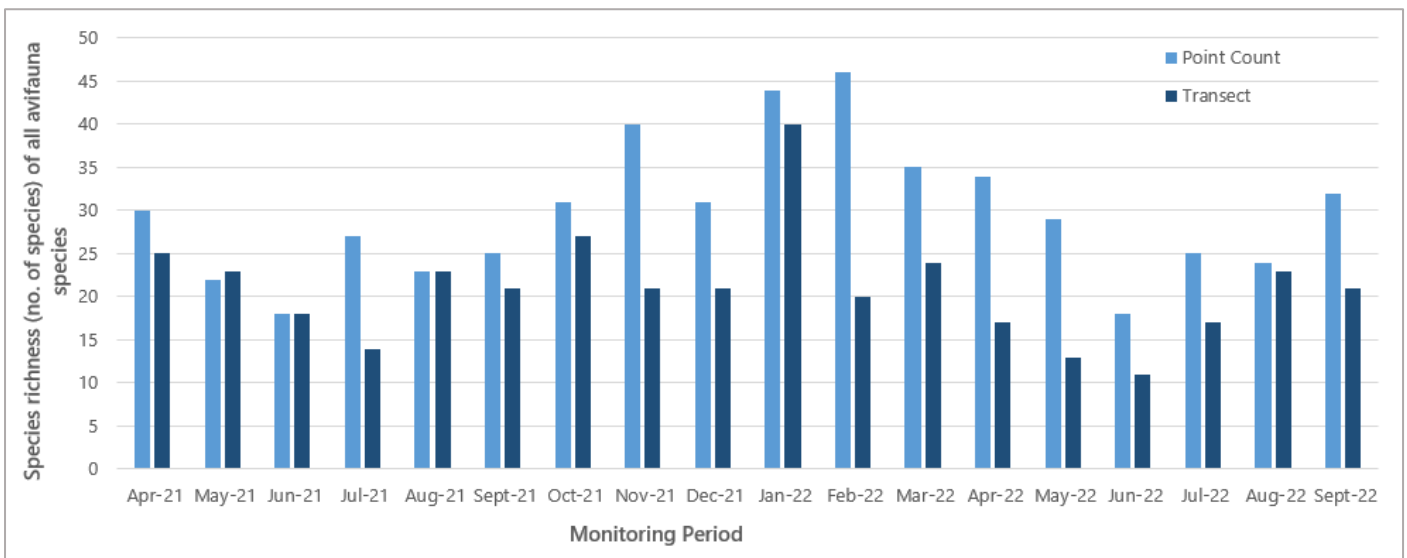
Appendix F.3.1 Abundance of all avifauna species throughout the monitoring period



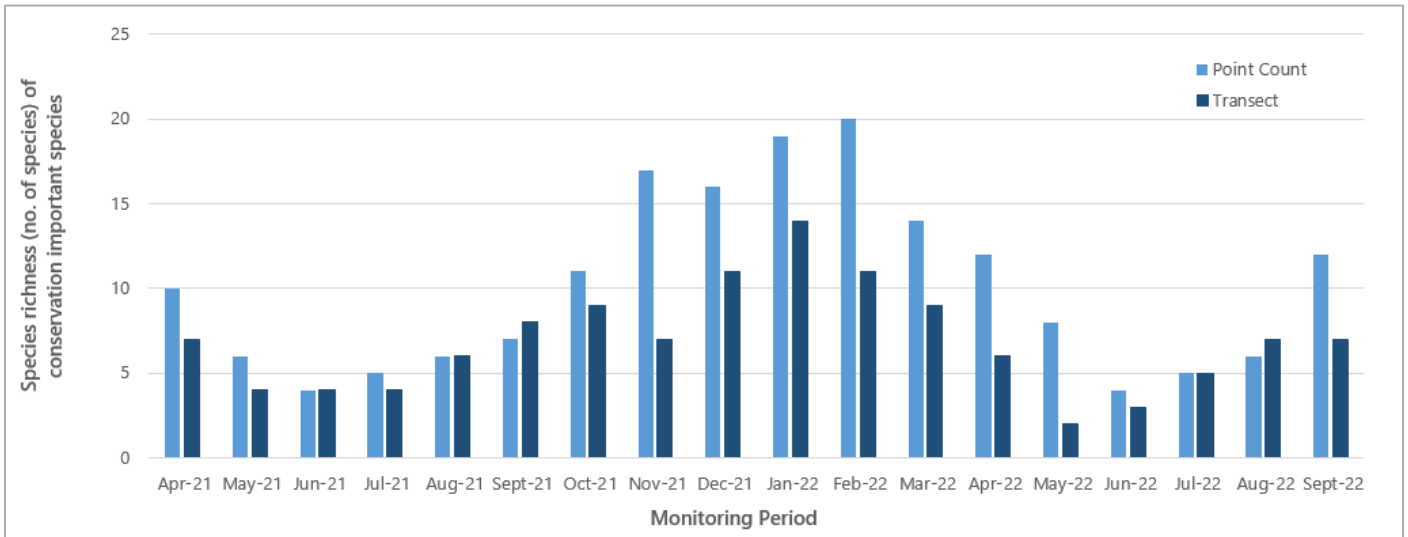
Appendix F.3.2 Abundance of avifauna species with conservation importance throughout the monitoring period



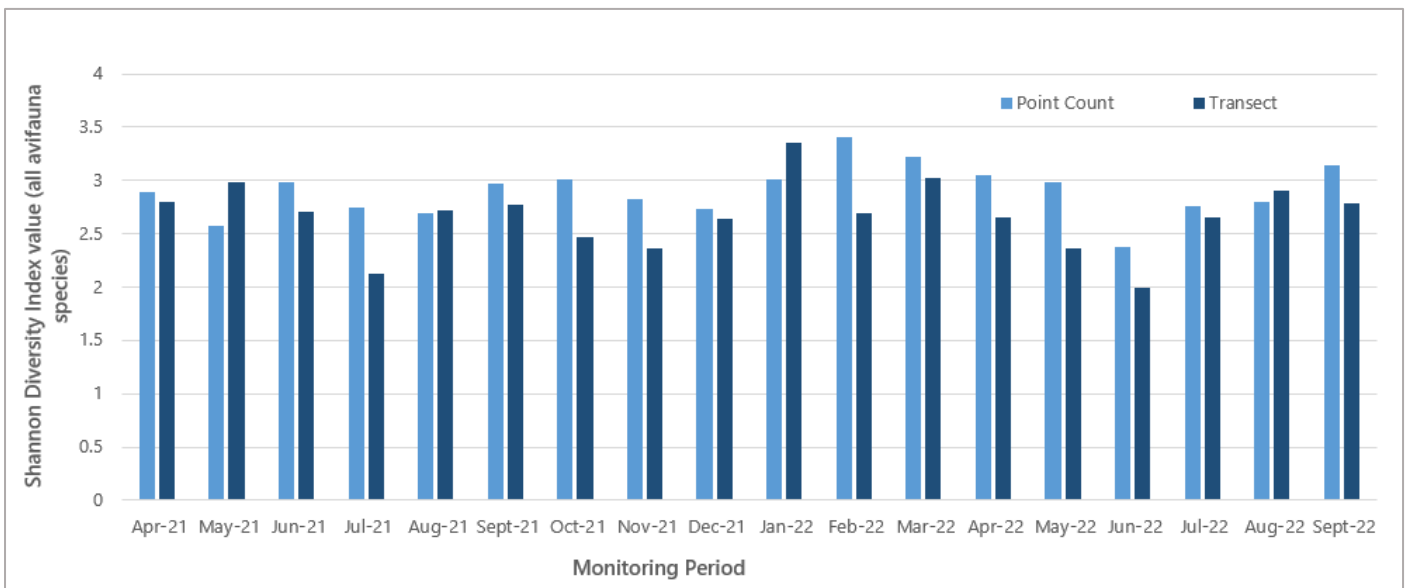
Appendix F.4.1 Species richness of all avifauna species throughout the monitoring period



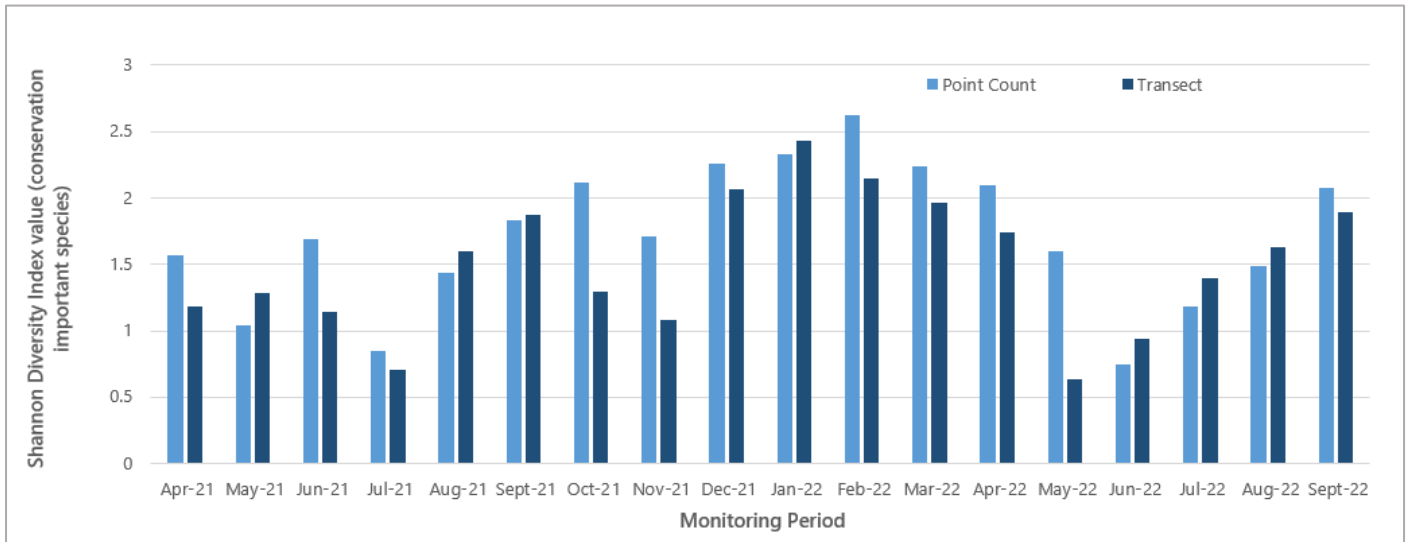
Appendix F.4.2 Species richness of avifauna species with conservation importance throughout the monitoring period



Appendix F.5.1 Shannon Diversity Index values of all avifauna species throughout the monitoring period



Appendix F.5.2 Shannon Diversity Index values of avifauna species with conservation importance throughout the monitoring period



Appendix F.6 Two-tailed Unpaired T-test

Formula:

$$t = \frac{\bar{X}_1 - \bar{X}_2}{\sqrt{\left(\frac{(N_1 - 1)s_1^2 + (N_2 - 1)s_2^2}{N_1 + N_2 - 2}\right)\left(\frac{1}{N_1} + \frac{1}{N_2}\right)}}$$

Appendix F.6.1 Abundance of all avifauna species – Point Count Method

Months	September 2016	September 2022
N	70	77
df	69	76
M	3.17	2.34
SS	889.94	129.22
S ²	12.9	1.7
t-value	1.90	
p-value	0.06	
Notes: N: Number of samples/observation df: Degrees of freedom M: Mean SS: Sum of Squares S ² : Measure on a random sample that is used to estimate the variance of the population		

Appendix F.6.2 Abundance of all avifauna species – Transect Walk Method

Months	September 2016	September 2022
N	33	29

Months	September 2016	September 2022
df	32	28
M	3.61	2.59
SS	405.88	51.03
S ²	12.68	1.82
t-value	1.45	
p-value	0.15	
Notes: N: Number of samples/observation df: Degrees of freedom M: Mean SS: Sum of Squares S ² : Measure on a random sample that is used to estimate the variance of the population		

Appendix F.6.3 Abundance of avifauna species with conservation importance – Point Count Method

Months	September 2016	September 2022
N	32	29
df	31	28
M	3.72	2.66
SS	488.47	68.55
S ²	15.76	2.45
t-value	1.35	
p-value	0.18	
Notes: N: Number of samples/observation df: Degrees of freedom M: Mean SS: Sum of Squares S ² : Measure on a random sample that is used to estimate the variance of the population		

Appendix F.6.4 Abundance of avifauna species with conservation importance – Transect Walk Method

Months	September 2016	September 2022
N	11	10
df	10	9
M	4.09	2.1
SS	208.91	2.9
S ²	20.89	0.32
t-value	1.36	
p-value	0.19	

Months	September 2016	September 2022
Notes: N: Number of samples/observation df: Degrees of freedom M: Mean SS: Sum of Squares S ² : Measure on a random sample that is used to estimate the variance of the population		

Appendix F.7. Hutcheson t-test testing method and output

Formula:

$$t = \frac{H_a - H_b}{\sqrt{S_{H_a}^2 + S_{H_b}^2}}$$

Appendix F.7.1 Species diversity of all avifauna species – Transect Walk Method

Months	September 2016	September 2022
Total	119	75
Richness	27	21
H	2.95	2.79
S ² _H	0.006	0.008
t	1.34	
df	164	
Crit	1.97	
p	0.18	
CI	0.15	0.18